



Office of the Board Secretary

LEYTE STATE UNIVERSITY

Visca, Baybay, Leyte 6521 A

Philippines

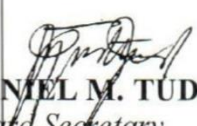
EXCERPTS OF APPROVED MINUTES OF THE
11th LSU Board of Regents Meeting
18 June 2003 * NEDA RO8
Government Center, Palo, Leyte

Proposal to Establish a Sanitation and Waste
Management Office (SWMO) under the Physical Plant Office

BOR RESOLUTION NO. 47, s. 2003

Approving the Proposal to Establish a Sanitation and
Waste Management Office under the Physical Plant Office (PPO),
as presented.

Certified True and Correct


DANIEL M. TUDTUD JR.
Board Secretary

Board Action: **APPROVED**
Date: 18 June 2003
Attachment: H

Cc: OP - sta 8/21
OVPAF - cd 1/21
PPO - ju 8-21
Dr. Villacarlos *muwa*



LEYTE STATE UNIVERSITY

Visca, Baybay, Leyte 6521
Philippines

Office of the President

18 June 2003

The Honorable Chairman and
Members of the LSU Board of Regents

Ladies/Gentlemen:

I am hereby endorsing the "Proposal to Establish Sanitation and Waste Management Division (SWMD)" which has been deliberated and approved by the University Administrative Council during its meeting on May 22, 2003.

I am therefore, recommending the same **FOR APPROVAL** by the Board of Regents.

Very truly yours,

PACIENCIA P. MILAN
President

BOARD ACTION: _____
DATE : 18 June 2003

PROPOSAL TO ESTABLISH SANITATION AND WASTE MANAGEMENT DIVISION (SWMD)

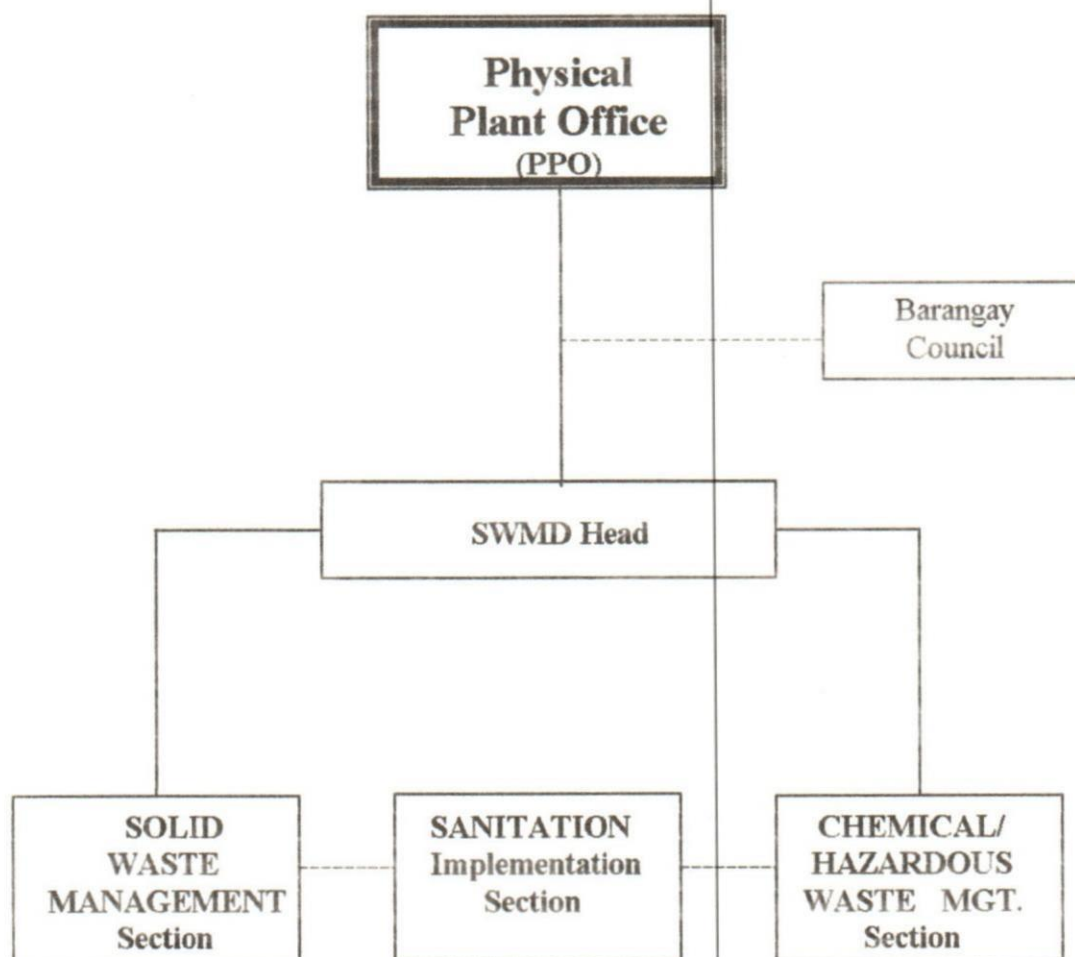
RATIONALE

The complexity of waste management stems from the increase in human population and the utilization of synthetic non-biodegradable materials. Before, when plastic was not yet produced, only biodegradable materials were used, hence waste management was simple. The Leyte State University, although basically an agriculture-based university, is experiencing waste management problems similar to urban communities. Presently, there is accumulation of plastics, bottles, tin foils, etc. which are non-biodegradable wastes coming from the households, student dormitories, academic departments, research and training centers. These materials, often clog the drainage canals and waterways or end up in the beach. Add on to this incident is the use of chemicals in the laboratory, field experiments and households that drain unwittingly to the Camotes Sea mixing with the waters of the LSU Sanctuary.

In the attempt to preserve and maintain the environmental integrity of LSU, and its neighboring environs, Memorandum Circulars (MC) had been issued in the past six years. On October 14, 1996, President, Dr. Samuel S. Go, issued MC No. 150 establishing the ViSCA Coordinating Committee on Environmental Protection, Cleanliness and Safety. In 2000, Dr. Paciencia P. Milan issued MC No. 46, creating the "ViSCA Sanitation and Recycling of Waste Committee" which was further re-invigorated by the "LSU Sanitation and Waste Management Committee" through MC 65 Series of 2001. Both memoranda stipulated the task of the Committee to monitor the sanitation and proper disposal of wastes in LSU; and to find and recommend means by which LSU populace would be encouraged to recycle their solid waste.

Nonetheless, these memoranda did not bring about the required solution nor had any impact on the communal behavior on waste disposal. With the present status of LSU and the development/implementation of new curricular offerings and research projects, we anticipate the increase in the student and faculty populations on campus. All of these would mean increased volume of solid and chemical wastes in the university. A committee cannot handle the great responsibility that goes with problems on wastes because its current members have major responsibilities. Therefore, there is a need for an office to serve as coordinating and implementing unit on activities related to solid and chemical waste management. This would be in line with the provisions in the Implementing Rules and Regulations (IRR) of Republic Act 9003, otherwise known as "Philippine Ecological Solid Waste Management Act of 2000" of the National Solid Waste Management Commission. One of the provisions in Section 1 (Declaration of Policies) of Rule II (Declaration of State Policy) stipulates that it is a policy of the State to institutionalize public participation in the development and implementation of national and local integrated, comprehensive and ecological waste management programs, hence this proposal.

STRUCTURE AND FUNCTIONS OF THE SANITATION AND WASTE MANAGEMENT DIVISION (SWMD)



FUNCTIONS

1. Plan and formulate guidelines/policies related to Waste Management programs/activities.
2. Review and implement or administer approved guidelines/procedures pertaining to waste management.
3. Monitor and coordinate all project/activities on waste management.
4. Develop and initiate training programs related to waste management.
5. Prepare periodic reports on LSU Waste Management activities.