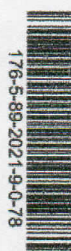


- ☒ Original PPMP
- ☐ Revised (Changed items, same budget)
- ☐ Supplemental



Republic of the Philippines  
**VISAYAS STATE UNIVERSITY**  
 Visca, Baybay City, Leyte



176-5-89-2021-9-0-78

**PROJECT PROCUREMENT MANAGEMENT PLAN (PPMP)**

**CY 2021**

Unit/Office/Dept/Div: **Office of the Director for Physical Plant**  
 Project Code: **Provision of Labor CME**  
 Purpose: **Repair of CME Building**

Total Budget : **62,500.00**  
 Funding **GF-MOOE**

| General Description                         | Quantity | Unit | Unit Cost | Estimated Budget | Schedule/Milestone of Activities (in quantities) |     |     |     |     |     |     |     |     |     |     |     |
|---|----------|------|-----------|------------------|--|-----|-----|-----|-----|-----|-----|-----|-----|-----|-----|-----|
|   |          |      |           |                  | Jan  | Feb | Mar | Apr | May | Jun | Jul | Aug | Sep | Oct | Nov | Dec |
| <b>Construction and Electrical Supplies</b> |          |      |           |                  |  |     |     |     |     |     |     |     |     |     |     |     |
| Labor Services, Repair of CME               | 1        | lot  | 62,500.00 | 62,500.00        |  |     |     |     |     |     |     |     |     | 1   |     |     |
| <b>Sub-Total</b>                            |          |      |           | <b>62,500.00</b> |  |     |     |     |     |     |     |     |     |     |     |     |
| <b>Grand Total</b>                          |          |      |           | <b>62,500.00</b> |  |     |     |     |     |     |     |     |     |     |     |     |

Prepared by: *Mario C. Bantugan*

**MARIO C. BANTUGAN**

Noted by: *Mario-Lilio P. Valenzona*

**MARIO-LILIO P. VALENZONA**  
 Unit Head/Project Leader

Funds Available: *Alicia M. Flores*

**ALICIA M. FLORES**  
 Head, Budget Office

Date: **10/29/2021**

\*Funding Sources: General Fund(GF), Trust Fund(TF, Special Trust Fund(STF), IGP, Supplemental or Augmentation  
 Note: Please make a separate PPMP for each funding source.  
 Categorize the entries such as Office Supplies, Office Appliance & Equipment, Office Furniture, Laboratory Supplies, IT Equipment, Construction & Electrical Supplies,  
 Farm & Agricultural Supplies, Feeds & Feed Ingredients, Medical & Dental Supplies, Auto Supplies