



LSU



Annual Report 2004

Vision

LSU as center of excellence in education and research in agriculture and allied fields in the Visayas.

PANGLANTAW

Ang LSU mao ang sentro sa kahanas sa edukasyon ug pagpanukiduki bahin sa agrikultura ug sa ubang susamang pagtuon dinhi sa Kabisayaan.

Mission

Attainment of the highest quality of human capital and scientific knowledge for the sustained growth and development of agriculture, fisheries, forestry, and agro-industries.

KATUYOAN

Pagkab-ot sa pinakataas nga kalidad sa pagpalambo sa kahibalo ug kasinatian sa siyensiya alang sa tunhay nga pag-ugmad sa agrikultura, pangisda, kalasangan, ug mga industriyang pang-agrikultura.

Leyte State University

6521 Visca, Baybay, Leyte, Philippines



Office of the President

23 May 2005

Her Excellency
President Gloria Macapagal-Arroyo
Republic of the Philippines
Malacañan, Manila

Through: *Dr. Carlito S. Puno*
Chairman, Board of Regents
Leyte State University

Madam:

May I have the honor to submit the Annual Report of the Leyte State University (LSU) for CY 2004.

This report summarizes the University's achievements in line with its thrust for countryside development and reflects the unity and dynamism of its constituency in realizing institutional goals and objectives.

Let me convey my profound gratitude for your generous and continuing support for LSU's growth and enabling the institution to carry out its role in support of national development.

Very truly yours,


PACIENCIA P. MILAN
President

Contents

Foreword	02
Highlights	04
Instruction	10
Research & Development	28
Extension	44
General Administration	54
Significant Events	68
Awards Received by Faculty & Staff	76
Awards Received by Students	79
Publications	81
Officers of the LSU System	82





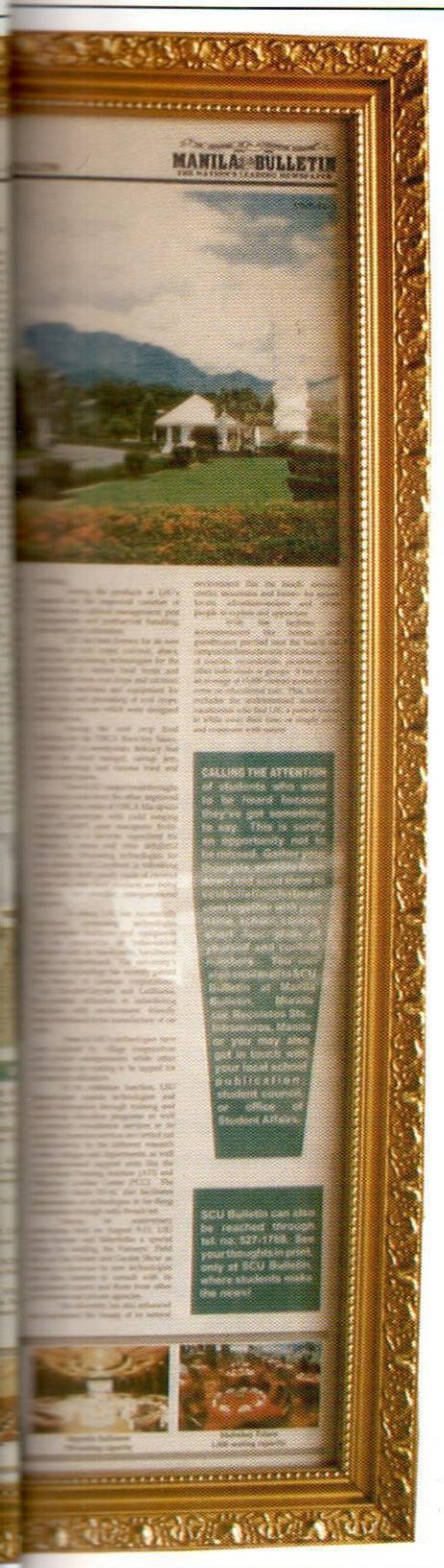
*F*or the Leyte State University (LSU), the year 2004 was marked with great challenges as well as noteworthy achievements.

Posed with the challenge of sustaining its reputation for academic and research excellence amid the pressing financial setbacks, LSU took decisive steps to ensure an effective and efficient institutional operation. While striving to negotiate for bigger budget from the government, it redefined its priorities, optimized and rationalized the use of its resources, and maximized revenue generation from its income generating projects. It mustered the competence of its constituency towards dishing out the best output and top-quality service with minimal cost. It streamlined its operational system through a series of strategic planning sessions among its constituency, and continued to revitalize its curricular programs in order to produce highly competent graduates with leadership capabilities. It likewise strove to mobilize the alumni and strengthen further their involvement and support in University affairs. Furthermore, the University continued to exemplify its creed and advocacy in the protection and stewardship of the environment.

LSU's growing commitment to academic excellence was manifested by its graduates' commendable performance in board examinations and in their respective work or professions, and through the awards that its faculty, staff, and students received. Its undying zeal towards agricultural development also paid off with commendations and program assistance from local and international institutions.

For its achievements in 2004 and the years back, LSU gratefully acknowledges and likewise counts on the continued support of its constituency—the administrators, faculty, staff, and students as well as its rural clientele, partner institutions, program benefactors, and most especially, the civil society—in pursuit of its thrust for countryside development.


PACIENCIA P. MILAN
President



In pursuit of its mission for countryside development, the Leyte State University (LSU) vigorously carried out its instruction, research, extension, and production activities which yielded the following major achievements/accomplishments during the calendar year 2004:

The University was accorded a Certificate of Recognition by the Professional Regulation Commission (PRC) as the *3rd Best SUC in the country* with 54 passers (48.0%) during the second licensure examination for agriculturists and a Certificate of Recognition by the Board for Foresters of the PRC as the *2nd Best Forestry School in the country*.

As a result of its initiative to draw support for its programs, the University received laboratory equipment and accessories from the following German institutions: European Nature Heritage Fund (EURONATUR), Karl Strenger Foundation, and Hirschmann Laborgerate GmbH & Company.

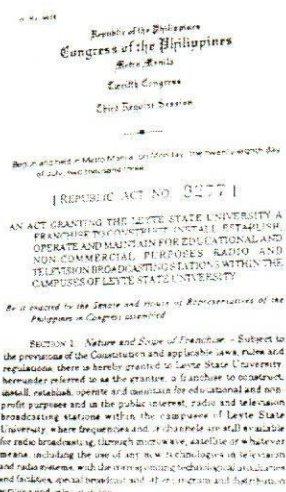
LSU was featured in *The Manila Bulletin*, one of the country's leading newspapers, in its November 23, 2004 issue under the Schools, Colleges, Universities (SCU) section. The two-page article highlights LSU's development from a provincial agricultural school to a well-respected agricultural university.

The LSU ROTC Unit earned recognition as the Best ROTC Unit of Region VIII during the Regional Annual Administrative and Tactical Inspection (RAATI) on January 26, 2004. It outranked other ROTC units in the region in the following contest categories: map reading, mantling and dismantling the Cal 45, company drill, ceremonial parade, small unit leadership and tactics, and OPORD writing.

The establishment of the Plant Disease Diagnostic Laboratory (PDDL) (which started operation on December 2, 2004) was made possible through the financial support of the following benefactors with their respective amount of donations: German Government through the German Foundation for Development (GTZ) - P1.4 million; PPP-Abaca Project - P140,000.00; Philippine Council for Agriculture, Forestry and Natural Resources Research and Development (PCARRD) - P500,000.00; Department of Science and Technology (DOST) - P500,000.00; and Department of Agriculture-Bureau of Agriculture Research (DA-BAR) - P500,000.00.

LSU was identified by the Deutsche Motorgerate, Inc. (DMI), in cooperation with the Andreas Stihl AG & Co. KG (STIHL) of Germany, as a Learning Center for the proposed courses in Landscape Management and Landscape Maintenance for urban and rural settings.

The Institute of Human Kinetics (IHK) received a "Skin Caliper" donated by Dr. Gun-Do Kim, professor of the Department of Sports and Leisure Studies of Semyung University in South Korea. The equipment is used to measure body fat of individuals and helps to promote consciousness among LSU students and personnel the importance of maintaining an optimum level of body fat to prevent obesity.



LSU Radio DYAC's franchise (top) and the "fat caliper" donated to IHK by Dr. Gun-Do Kim (right).



The LSU Radio DYAC was granted a franchise through R. A. 9277, otherwise known as "An Act granting the Leyte State University a franchise to construct, install, establish, operate and maintain for educational and non-commercial purposes radio and television broadcasting stations within the campuses of LSU." The bill authored by Congresswoman Carmen L. Cari of the 5th District of Leyte was approved by the Philippine Senate on January 28, 2004 and instituted on March 28, 2004.

The LSU-Alangalang Campus received a cash donation of P300,000.00 from ABA Party List through Cong. Dioscoro A. Granada for the completion of its new Library Building.

Instruction

Two (2) LSU graduates got into the top 10 and four (4) into the top 20 places in the 2nd Licensure Examination for Agriculturists conducted by the Professional Regulation Commission-Board of Agriculture on July 2004. They were: Sarah A. Doydora - 6th place; Maria Lima D. Pascual - 8th place; Maria Dinah M. Reformina - 14th place; Leo R. Elorde and Dennis Jefferson D. Gamutan - 16th place; and Marjoe Rey A. Labonite - 18th place. Likewise, Ronald B. Torregoza, a Doctor of Veterinary Medicine graduate, ranked

6th in the Veterinarian Licensure Examination given by the Board of Veterinary Medicine of the Professional Regulation Commission (PRC) in Manila on July 28, 2004.

The DAAD-funded Master of Science in Forestry partnership program between LSU's College of Forestry and the University of Gottingen, Germany commenced during the year.

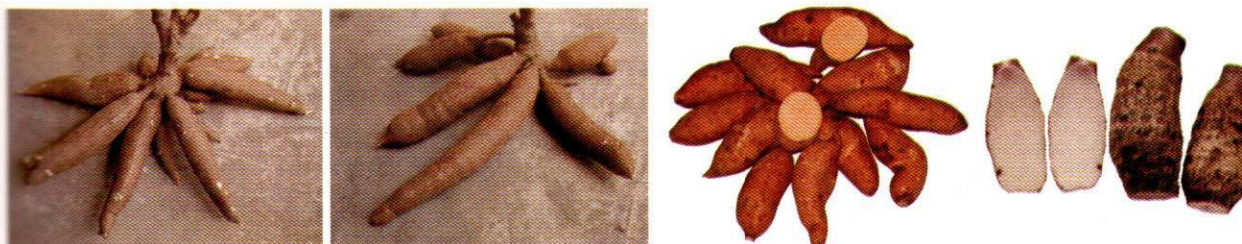
Food Science and Technology was offered as a minor field in the Graduate Extramural Program of the LSU Main Campus effective school year 2004-2005.

Effective first semester of SY 2004-2005, the following courses were offered: Bachelor of Science in Industrial Engineering (BSIE) - at the College of Agro-Industrial Technology (LSU-Isabel Campus); and the Bachelor of Secondary Education (BSEd) major in Physical Education, Health, Music and Arts (PEHMA) - at the LSU Main Campus.

CS 21 (Introduction to Computers) was offered in other degree programs of the University and higher computer courses were included as service courses under the BSAE, BSS, BSAC, and MSAE programs.

Research & Development

The Philippine Root Crop Research and Training Center (PhilRootcrops) based at the LSU Main Campus developed six new rootcrop varieties which were approved and released by the National Seed Industry Council (NSIC) for national adoption. These include: cassava - NSIC Cv 27 (OMR 36-05-09), NSIC Cv 28 (CM 9158-4), NSIC Cv 29 (G95-02-04), and NSIC Cv 30 (CMR 25-05-112); sweetpotato - NSIC Sp 30 (JK 027); and ubi/yam - NSIC G-9 (GS-385).



PhilRootcrops submitted for patenting its newly developed technologies on Sweetpotato Pickles, Cassava Grates Processing System, Sweetpotato Harvester, and Sago Grating Machine. It also developed the following new products: espasol, cassava grates cheesy bar, and pickles from a combination of sliced singkamas and sweetpotato (RC 2000).

The different research centers at the LSU Main Campus enriched their respective genebanks to achieve their present number of germplasm collections: **NARC** - 498 cultivated types, 144 wild relatives, and 102 hybrids which are maintained both in the field (*ex situ*) and *in vitro*; **NCRC** - 41 accessions of coconut; and **PhilRootcrops** - 2,040 accessions consisting of sweetpotato - 936; cassava - 322; yam - 391; taro - 304; arrowroot - 36; and yambean - 51.

The different academic departments, colleges and research centers of the University dished out the following mature technologies: **DFST** - flavored grease-free roasted peanuts and sulfite-free dehydrated fruits; **NCRC-V** - banana production technology under coconut plantation, and ginger production technology under coconut plantation; **PhilRootcrops** - dried grates processing system which include cassava grater, spinner, pulverizer/siever, and rotary drum dryer; and **LSU-Isabel Campus** - meat processing - hotdog making, structured ham, tocino, chorizo, and skinless longaniza, and in food technology - ice cream bar making.

Extension

Despite intense financial limitations as a result of budgetary cuts, the different research and training centers, colleges, departments, and institutes of LSU realized the following extension activities:

Technical assistance to **biogas adaptors and farmers** - on coconut/rootcrops/abaca/vegetables/floriculture/orchard/bio-organic fertilizer (BOF) production/establishment/management/processing and utilization, forestry and environment; **fisherfolks** - on the culture technology of freshwater prawn and tilapia pond development; **cooperatives** - on project proposal preparation and feed mill management; **LGUs/NGOs** - on environmental advocacy, data analysis and interpretation of results, conducting Participatory Technology Development (PTD), mass production of cassava in their respective areas; **development communication students** - in the production of their developmental dramas and radio documentaries; **LSU offices** - data base for directory and development of the Teaching Performance Evaluation System.

Various trainings, lectures, briefings, seminars, workshops.

Other extension activities through the pest and animal clinic, demonstration farms, herbarium and botanical garden, arboretum, pesticidal and medicinal gardens, stationary exhibits maintained at the LSU Main

The newly approved rootcrop varieties: (left-right) NSIC CV 27, NSIC CV 28, NSIC Sp 30, and NSIC G-9.

Campus, off-campus exhibits during agri-industrial fairs in the different parts of the country, distribution of planting and communication materials free of charge or at minimal cost, fabrication and distribution of processing machines, and laboratory analyses of plant and soil samples.

Awards and Recognition

Professorial Chair. An LSU faculty member and researcher in rootcrops was granted a professorial chair by the Philippine Agriculture and Resources Research Foundation, Inc. (PARRFI).

National Awards. Nine faculty members received awards from national organizations/agencies and one faculty received four awards as adviser. The awards include: 2-*AFMA R & D Paper Award* from DA-BAR.

(Left-right) Ms. Elizabeth C. Parac, Dr. Lelita R. Gonzal, and Dr. Marilyn M. Belarmino, pose with LSU President Paciencia P. Milan during the awarding of winners in the 16th Regional Symposium on R & D Highlights.



1-*CHED Republica Award for Research Publication* from CHED, 1-*Best Paper Award* from PCAMRRD, 1 - *CSSP Best Paper Award (Downstream Research Category)* from CSSP, 2 - *Best Science Research Mentor Award & 3rd Grand Prize Winner - Adviser* from DOST-Intel Phil, 1-*Intel Excellence in Computer Science Award - Adviser* from Intel USA, 1-*Best Adviser Award in Information and Technology* from SEAMEO-INNOTECH, 1-*Yale Engineering Award-Adviser* from Yale University; 1- *Professorial Chair Award* from PARRFI, and 1- *Outstanding Centennial Alumnus Award in Forestry Education* from PUP.

Regional Awards. Thirty-eight (38) faculty members and researchers received awards for their research projects from VICARP-RRDEN and 22 received awards for their posters.

Institutional Awards. Seven faculty and administrative personnel of the Main Campus and one from LSU-Tolosa Campus received awards from LSU during its founding anniversary. Other awards were accorded by the following: Office of Student Affairs (OSA) - 4 (*Keeper of Service*); Phi Delta, the Honor Society of Science - 4 awards given to *Undergraduate Thesis Advisers*; DepEd - 2 awards given to *Science Project/School Paper Adviser*; and PAFTE - 1 award given to a *Thesis Adviser*. Eight personnel of the LSU-Alangalang Campus received awards during the founding anniversary of their college.

Collaborations

During the year, LSU formalized agreements with the following institutions:

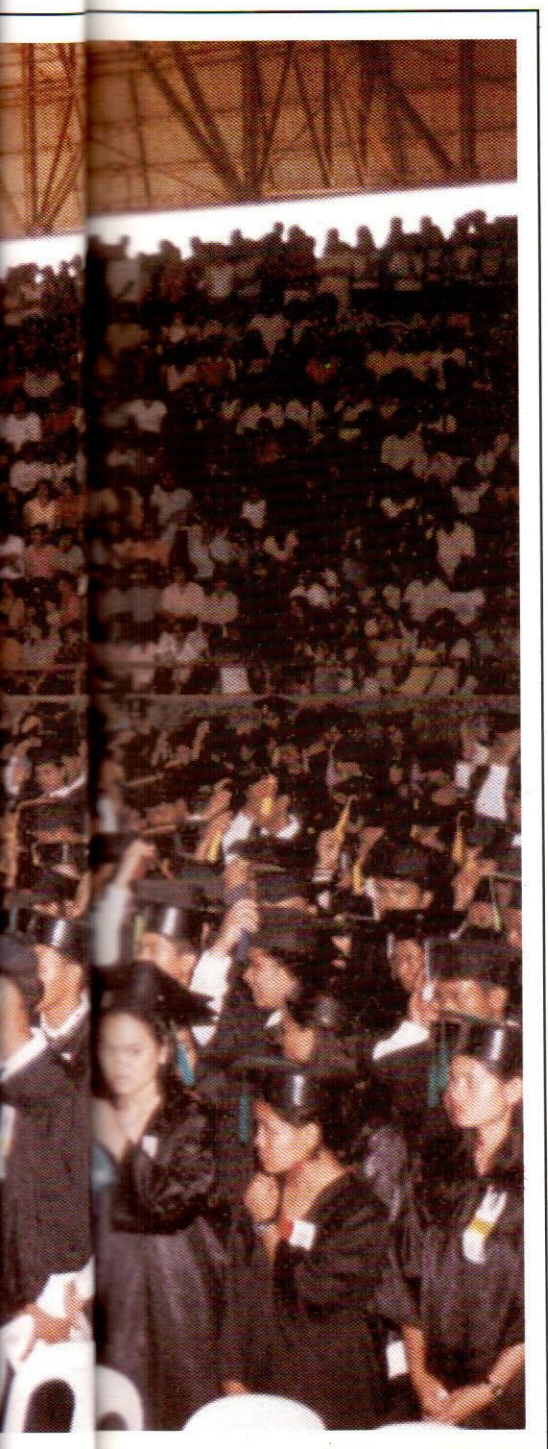
Tokyo University of Agriculture and Technology (TUAT), Tokyo, Japan - exchange of faculty members, students, publications, and joint research and other scholarly activities by the members of the faculty and staff of the two institutions; Faculty of Horticulture and Graduate School of Science and Technology, Chiba University, Japan - faculty and student exchange as well as research collaborations between the two universities; King Mongkut's University of Technology, Thunburi, Bangkok (KMUTT) - institutional collaboration; Institute for Agricultural Engineering in the Tropics and Subtropics, University of Hohenheim, Stuttgart, Germany - research and development contract on the project "Cultivation and Processing of Abaca Fibers" which is part of the contract with DaimlerChrysler and Hohenheim University on Sustainable Production of Abaca-Plant Fibers-Philippines; Bureau of Agricultural Research (BAR) and Department of Agriculture-Southern Tagalog Integrated Agricultural Research Center (DA-STIARC) - transfer of embryo-cultured makapuno (ECM) hybrid seedlings for planting at the DA-STIARC experiment stations to serve as Makapuno embryo source in

the future as well as a showcase on Makapuno farming to the farmers in the province through a Material Transfer Agreement (MTA); and Tongonan Workers' Union (TWU) - granting of scholarships to qualified students from Ormoc City starting school year 2004-2005.

MOA signing between the Leyte State University and Chiba University (below) and LSU with BSH Bosch and Siemens Hausgerate GmbH, University of Hohenheim, Germany on the two projects on "Plant Oil Production" and "Plant Oil Stove Project" (bottom).







Curricular Offerings

Graduate Courses

Two new graduate degree programs - MS in Tropical Ecology and MS in Rural Sociology, were offered in the LSU Main Campus effective first semester of school year 2004-2005.

Food Science and Technology was offered as a minor field in the Main Campus Graduate Extramural Program effective school year 2004-2005.

Undergraduate Courses

The Bachelor of Secondary Education (BSEd) major in Physical Education, Health, Music and Arts (PEHMA) was offered in the Main Campus effective first semester of SY 2004-2005.

CSci 21 (Introduction to Computers) was offered as a fundamental course in other degree programs of the university and higher computer courses were offered as service courses under the BSAE, BSS, BSAC, and MSAE programs of the Main Campus.

The Bachelor of Science in Industrial Engineering (BSIE) was offered at the College of Agro-Industrial Technology, LSU-Isabel Campus effective first semester of SY 2004-2005.

The LSU Board of Regents (BOR) approved the proposal of the Training Officer of the Civic Welfare Training Service (CWTS) to set a maximum limit for enrolment in CWTS to 500 students only due to the difficulty of seeking host barangays for the students.

Curriculum Development

As part of LSU's continuing drive to revitalize its curricular programs to meet the manpower demands of the country, the University's various academic units made proposals for curricular modification or new offerings.

Graduate Program

Proposals to offer Ph. D. in Food Science and Technology and Chemistry and Biology as field of specialization in the Master of Education (M. Ed.) degree program were in progress during the school year.

A proposal for the joint offering of the degree of Master in Biology by the LSU Main Campus and the Leyte Normal University (LNU) in Tacloban City was conceptualized by the Department of Biological Sciences (DBS).

Undergraduate Program

The proposal to revise the BS Agricultural Engineering (BSAE) curriculum to include courses in Aquaculture Engineering and Forest Product Engineering as mandated by the Commission on Higher Education (CHED) and the Professional Regulation Commission (PRC) underwent initial deliberation during the year.

The newly revised curriculum of the BS in Agribusiness (BSAB) was further enriched with the inclusion of the following fundamental courses: Mgmt 21 - Organization and Management; Mgmt 22 -

Agribusiness Management; and major management courses: Mgmt 113 - Business Economics, Mgmt 198 - Research Planning and Manuscript Preparation, and Mgmt 200 - Undergraduate Thesis as an option to field practice.

The proposal of the Department of Pure and Applied Chemistry (DoPAC) to offer Bachelor of Science in Biotechnology (BSB) was reviewed by the Office of Curriculum and Instructional Materials Development (OCIMD).

The proposal of the Department of Liberal Arts and Behavioral Sciences (DLABS) to offer A. B. in Communication Arts major in English passed the scrutiny of the college academic council and was recommended for review by the university curriculum committee. Meanwhile, a proposal to include English as a major field under the BSED curriculum was also developed and the subjects under it were identified following the DepEd Operations Handbook for Secondary English courses.

The proposed revision of the Bachelor of Animal Science (BAS) curriculum was submitted for review by the college curriculum committee.

The newly established proposals for the offering of Bachelor of Science in Development Education (BSDE) with majors in Community Development Education, Extension Education, and Community Nutrition Education, as well as the Bachelor of Science in Agricultural Development Education with majors in Agricultural Extension and Community Development were submitted for review by the college curriculum committee.

Other academic departments also drafted curricular proposals, as follows: Department of Economics - B. S. in Economics; and Department of Biological Sciences (DBS) - BS Biology major in Molecular Biology and Genetics.

Enrolment Profile

During the 1st semester of school year 2004-2005, the LSU Main Campus had a total enrolment of 3,768 students, composed of 178 graduate students (10 Ph.D., 168 MS/MAgDev/MEd); 3,565 undergraduate students; and 25 students in the non-degree program (Table 1).

The LSU Laboratory High School (LSULHS) at the Main Campus had a total enrolment of 484, composed of 196 boys and 288 girls.

During the 1st semester of school year 2004-2005, the student enrolment at the satellite campuses reached as follows: Isabel Campus - 702; Alangalang Campus - 579; Villaba Campus - 474; and Tolosa Campus - 293.

Graduates

The LSU Main Campus turned out 684 graduates during its 51st Collegiate Commencement Exercises which included 34 graduates in the graduate program (21 MS, 12 MAgDev, 1 MEd); 645 in the undergraduate program (155 BSAgEd, 94 BAS, 93 BSA, 77 BSAB, 52 BSHE, 30 BSF, 28 DVM, 26 BSFT, 19 BSBio, 17 BSS, 17 BSDC, 14 BSAC, 13 BSAE, and 10 BSAgDev)); and 5 in the non-degree program. Twenty-four (24) marched with academic honors: 2 *Magna Cum Laude* and 22 *Cum Laude*.

Table 1. LSU Main Campus student enrolment by degree, First Semester SY 2003-2004 and SY 2004-2005.

COURSE	1 ST SEMESTER 2003-2004	1 ST SEMESTER 2004-2005
GRADUATE		
PhD	14	10
M. S.	115	86
M. Ag. Dev.*	124	81
M. Ed.	5	1
SUB-TOTAL	275	178
UNDERGRADUATE		
Doctor of Veterinary Medicine (DVM)	253	276
Bachelor of Animal Science (BAS)	345	265
BS in Agriculture (BSA)	503	406
BS in Agribusiness (BSAB)	589	518
BS in Agricultural Chemistry (BSAC)	30	10
BS Chemistry (BSC)	46	67
BS in Agricultural Engineering (BSAE)	143	107
BS Geodetic & Geomatics Engineering (BSGGE)	31	57
BS in Agricultural Development (BSAgDev)	61	76
BS in Agricultural Education (BSAgEd)	221	43
BS in Development Communication (BSDC)	148	151
BS in Food Technology (BSFT)	156	178
BS in Forestry (BSF)	164	124
BS in Home Economics (BSHE)	243	166
BS in Statistics (BSS)	96	86
BS in Biology (BSBio)	167	191
BS in Computer Science (BSCS)	107	128
Bachelor of Secondary Education (BSEd)	166	183
Bachelor of Elementary Education (BEEd)	501	533
SUB-TOTAL	3,970	3,565
NON-DEGREE		
Home Economics Technician (HET)	49	25
SECONDARY EDUCATION	499	484
GRAND TOTAL	4,676	4,252

* Open University and Saturday classes enrolment are included.



LSU Pres. Paciencia P. Milan (4th from left) and Dr. Manuel K. Palomar, VP for Academic Affairs (7th from right) pose with LSU's successful examinees of the licensure examination for agriculturists.

A total of 100 graduates received their diplomas during the LSULHS 74th Commencement Exercises, of whom 46 earned the following distinction: 1 - "With Highest Honors," 7 - "With High Honors," and 38 - "With Honors."

The satellite campuses of LSU had the following number of graduates: 115 - Alangalang Campus (49 DAT, 41 BSA, 25 BAT); 79 - Isabel Campus (18 BSEd, 11 BSAB, 25 DACT, 25 DTTE); 96 - Tolosa Campus (80 BSFi, 16 BSEd); and 46 - Villaba Campus (26 BSE, 16 BSA, 4 BAT).

Scholastic Performance of Students

Scholarships and Financial Assistance

LSU Main Campus- 21 graduate students enjoyed scholarships which were granted by SPREAD - 9, DA-BAR - 5, FIDA - 1, LSU-CHED - 1, LSP-CSC - 2, LSU Staff Dev. Program - 2, DOST-SDP - 1; and 12 Teaching/Research Assistantships (GTA/ GRA) from LSU and research projects (GTA-10 and GRA-2). Twenty-one (21) students availed themselves of the LSUSELF loan which is payable within one month.

LSU-Alangalang Campus - 47 students enjoyed scholarships/grants from LGU-Jaro, Leyte - 30; LGU-Alangalang, Leyte-7; LSU-AC Alumni Association - 5; Virgo Multipurpose Coop - 1; and Staff Dependent Assistance Program - 4.

LSU-Isabel Campus - 71 students enjoyed scholarships/grants from the College: SB - 18, SK - 50, Honorific - 1, and USSC - 2. Twenty-four (24) students availed themselves of assistantships and loan assistance.

Table 2. Passing rate and number of topnotchers in Professional Licensure Examinations.

EXAMINATION	Date of Examination	Top 10 Rank	Institutional Passing Percentage	National Passing Percentage
Veterinary Medicine	July 2004	6 th	35.48	33.26
Agricultural Engineer	July 2004	-	54.55	37.12
Foresters	June 2004	-	41.67	35.00
Chemists	September 2004	-	50.00	46.00
Teachers				
Elementary	August 2004	-	43.60	26.95
Secondary		-	51.72	27.15
Agriculturists	July 2004	6 th , 8 th	48.00	25.00

LSU-Villaba Campus - 32 students received scholarships/grants from the College: Honorific Scholarship - 3, Faculty Dependent/ROTC/Dance Troupe Grants - 29. Fifteen (15) poor but deserving students availed themselves of student assistantships at the rate of P10.00 per hour.

Honors and Awards

The following cream of the crop received special awards including the Civil Service Eligibility which was granted to all graduates with Latin honors by the Civil Service Commission during the 51st Collegiate Commencement Exercises of the LSU Main Campus on April 2, 2004:

Reiofeli A. Salas (*Magna Cum Laude*) - *LSU Presidential Award of Academic Excellence*, *Pres. Gloria Macapagal Arroyo Academic Excellence Award*, *Manuel B. Villar, Jr. Excellence Award*, *Philippine Senate Gold Medal for Academic Excellence*, and *Congresswoman Carmen L. Cari Academic Excellence Award*

Chellafe N. Ensoy (*Magna Cum Laude*)

Shirah Ed Adel B. Villegas (*Cum Laude*) - *Pres. Gloria Macapagal Arroyo Leadership Award*, *Senator Loren Legarda Leadership Award*, *Philippine Senate Gold Medal for Academic Excellence*, *Gov. Remedios L. Petilla Medal of Excellence for Most Outstanding Student*, and *Breeders Award of Excellence*

Maria Dinah M. Reformina (*Cum Laude*) - *Breeders Award of Excellence*

Rodney H. Perez and Bombit C. Porazo (*Cum Laude*) - *Philippine Senate Gold Medal for Academic Excellence*

Julissah C. Evangelio, Em A. Parac. Chime G. Mora, Fermina C. Genson, Joseph Louie Jean M. Canoy, Kristine Mari D. Bismark, Maria Louella B. Cuarteros, Jennifer A. Hilaga, Esther D. Septimo, Mariter V. Sarsonas, Anne Zee Luz P. Barrozo, Joysiree D. Timbang, Marife R. Suringa, Charlyn G. Estremos, Fe Leonida A. Gundaya, Florame O. Mascuñana, Amorlina A. Galado, and Martin C. Ramis (*Cum Laude*)

The graduates who received *Phi Delta Outstanding Undergraduate Thesis Award* from the Phi Delta, The Honor Society in Science were: Dennis O. Polinar (Pure Physical and Biological Sciences), Carmela A. Cagasan (Applied Biological Sciences), and Hedda P. Dargantes (Social Sciences).

Students' Achievements

Main Campus

One hundred twenty-four (124) varsity athletes and 15 coaches were given recognition during the Annual Athletic Awards Night on March 5, 2004.

Gladys L. Ludevese participated on the 5th International Youth Day held at the Philippine Normal University, Manila on August 12-14, 2004.

The LSU Canabis Blues Team and Marlboro Team - got 2nd and 3rd places, respectively, in the 5-Man Aside Football Challenge held at LSU oval grounds on August 27-29, 2004.

The Women's Varsity Basketball Team - won in its game with the MLG Varsity Basketball Women's Team held at Hilongos, Leyte on August 28, 2004.

LSU ranked 2nd in the overall medal tally during the Regional SCUAA



Reiofeli A. Salas, *Magna Cum Laude* (highest grade point average) receiving the award from Senator Orly Mercado during the 51st Commencement Exercises (top); National winners in the Intel Philippine Science Fair: Jeela Z. Acedo, 2nd grand prize in Life Sciences-Individual Category (middle); and the other team category winners: Francis Ariel R. Gapasin, Ma. Fe. Noverre C. Evangelio, Emil Joseph O. Carreno, Stephen Alexis G. Baltazar, Janice F. Bellezas, and Paul Winston W. Tabada (bottom).

Games 2004 held at the Eastern Visayas State University (EVSU), Tacloban City. It got first place in two ball games - football (men) and volleyball (women); 2nd in tennis (men); 3rd in badminton (women); and silver medal (Welter Weight Division) and 3 bronze medals (Fly Weight Division, Bantam Weight Division and Feather Weight Division) in Tae Kwon Do (men).

The Association of Rodeo Enthusiasts in Visca (AREV) emerged as the overall champion in the Buglasan Rodeo and Horseshow Competition held at the Perdices Coliseum, Dumaguete, Negros Oriental on October 15-17, 2004.

Kyrene Lo Ramoneda was elected President of the Division Secondary Students Writers Association while Daryl Emerald Tanquezon won the post as representative for Area V during the 2004 Secondary Schools Division Press Conference held at Baybay National High School, Baybay, Leyte on October 21-22, 2004.

Satellite Campuses

Students from the LSU-Isabel Campus were declared general champion in the Literary-Musical Contest and 3rd place in the athletic competition during the University

Sportsfest '04 held at the LSU Main Campus on September 8-11, 2004.

The Dolphin, the official student publication of the LSU-Tolosa Campus, was adjudged "Best School Paper of the Year" among 27 college publications in Eastern Visayas during the Regional Tertiary Schools Press Conference on December 13-15, 2004 at Candahug, Palo, Leyte.

Student Welfare

Student Housing

A total of 1,603 students were housed in 22 dormitories of the LSU-Main Campus during the 1st semester and 1,421 students in the 2nd semester.

Major repair of the LSU-Main Campus high school girl's dormitory, including fabrication and repair of its furniture, replacement of door and window screens, and installation of steel doors and grilling, was done.

Student Activities

Graduate students carried out the following activities: seminar-workshop on thesis/dissertation manuscript preparation, organizational meeting, and preparation of the first draft of the Graduate Students' Constitution and By-Laws.

Student activities in the Department of Liberal Arts & Behavioral Sciences consisted of a debate in English 26 and culmination programs in English 21, Filipino, and Speech 11.

LSU ROTC cadet officers assisted the LSULHS CAT Unit officers in their training activities and actively supported LSU in various university affairs and in cleaning its surroundings. CWTS students likewise helped in maintaining the cleanliness of the LSU Beach and Eco-Park.

The Association of Rodeo Enthusiasts in Visca (AREV), overall champion during the Buglasan Rodeo and Horseshow Competition held in Dumaguete, Negros Oriental.



The student organizations of the LSU system carried out myriad of activities such as veterinary services for dogs in the campus through the Oplan *Alis Itlog* (castration), *Alis Rabies* (anti-rabies vaccination), and *Alis Asong Layaw* (catching of stray dogs), educational trip, quiz show, poster making contest, essay writing contest, tree planting, environmental protection activities, seminars, and tutorials. Other activities include book donation, construction of kiosk, co-sponsorship of the annual rodeo, providing assistance in the different activities during the LSU Anniversary, film showing, feeding of malnourished children, raffle draw, giving of gifts to the needy, participation in the *kaugmaram* street dancing, sportsfest and other social activities, and attending trainings and seminars (Table 3).

Student Organizations

The College Inter-Dorm Student Body (CISB), in collaboration with the Office of Student Affairs, College of Agriculture's (CA) Supreme Student Council, and LSU Radio DYAC, sponsored on January 30, 2004 the "Song Festival 2004," a song writing contest promoting unity and cooperation, loyalty to LSU, and wholesome student life.

The following awards were presented to student organizations during the "First Awards Convocation" sponsored by the LSU Office of Student Affairs on March 5, 2004 at the LSU Gymnatorium: *Course-Related Organization Award* - Chemical Society (1st place), Philippine Association of Food Technologists - Kappa Student Chapter (2nd place), and Visca Horticultural Society (3rd place); *Service Organization of the Year Award* - Tau Gamma Phi Triskelion Grand Fraternity and Sorority (1st



place) and Theta Psi Lambda Fraternity and Sorority (2nd place).

Student Recreation

While the repair of the Student Lounge was continued, students were provided with wholesome recreation (dart, chess, guitar playing, billiard, and table tennis) at the Student Lounge and Recreation Center.

Guidance and Counseling Services

The Guidance and Counseling Services Section of the Office of Student Affairs (OSA) administered the following examinations: qualifying examination to 260 students who sought admission to the DVM, BCSC, BSGGE, BSAE, and teacher education degree programs; job placement exam to 35 applicants for clerical and driver positions; and psychological test to 149 students for counseling and vocational guidance. OSA also conducted the General Orientation Program for new students of the LSU Main and satellite campuses; sponsored the *Jobs Fair* to facilitate job placement of LSU graduates; established new linkages for employment of graduates; and

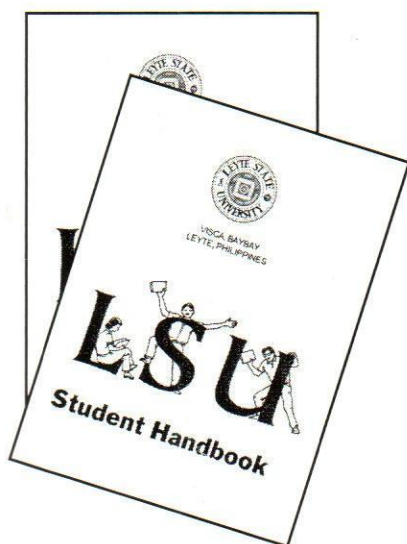
Different student activities: (clockwise) BS Geodetic and Geomatics Engineering students during their field survey; and sportsfest '04 - basketball, volleyball, and Tae Kwon Do

Table 3. Activities of student organizations, SY 2004-2005.

ORGANIZATION	ACTIVITIES UNDERTAKEN	AWARD RECEIVED
Visca Chemical Society (ViChemSo)	Celebrated Chemistry Week with quiz show and poster making contest; assisted during enrolment; victory party; attended seminars on environmental chem. demo, care and feeding of pH meters and Japanese language lessons	1 st place <i>Course-Related Org. Award</i>
Phil. Association of Food Technologists - Kappa Student Chapter (PAFT-KSC)	Freshmen Orientation Program; <i>alay linis</i> ; acquaintance party; tribute to 2004 graduates and parents	2 nd place <i>Course-Related Org. Award</i>
Visca Horticultural Society (ViHOS)	Co-sponsored the Flower & Garden Show and Horticulture Week; tree planting; environmental protection activities; quiz show; seminar; plant contest; parlor games	3 rd place <i>Course-Related Org. Award</i>
Veterinary Student Society (VSS)	Veterinary services for dogs in LSU campus and neighboring communities through the <i>Alis Itlog</i> (Castration), <i>Alis Rabies</i> (anti-rabies vaccination), and <i>Alis Asong Layaw</i> (Catching of stray dogs); acquaintance party; participated in the LSU anniversary and university intramurals;	
Ag. Economics Majors Student Society (D'AGEMSS)	Acquaintance & induction party; orientation of new major students; booth making; <i>alay linis</i> ; Painted the concrete bench project under the pili tree in front of the DOE building	
Society of Agri-business Students (SABS)	Election of officers; Field trip to Cebu City; SAVALEX during Valentine's Day; tribute to graduates; <i>alay linis</i> (campus clean-up); organizational meeting; repair of DBM stockroom and chairs; conducted strategic planning workshop & revision of SABS Constitution & By-Laws; distribution of bundles of joy; booth making & LSU anniversary involvement	
PSAE-Student Chapter	Tutorial classes in Math, Algebra, Trigonometry, and Physics in dormitories every TTh; purchased 20 volumes of Engineering books and donated them to the department library; conducted tribute to graduating AE students	
Home Economics Society (HES)	Constructed the HES Kiosk; <i>alay linis</i> of DFCS building and surroundings; Nutri Quiz to ViFES pupils; assisted the Committee on Snacks Preparation & Service; participated in the educational exhibit during the Compost Fair; celebrated HES Week	
Society of Animal Science Students (SASS)	Field trip to Palompon Horsetrack Riding School at Palompon, Leyte; sponsored the Annual Rodeo Competition and barn dance	
SUASSM	Acquaintance party; citrus tree planting along Nangka Avenue; SUASSM Week celebration with quiz show	

ORGANIZATION	ACTIVITIES UNDERTAKEN	AWARD RECEIVED
Plant Protection Majors Association (PPMA)	<i>Alay linis</i> (cleaning of department surroundings), termite control in termite-infested buildings of LSU; welcome party for the new major students; assisted in maintaining the cleanliness of the department and surroundings; assisted in the registration of farmers during the Farmers' Field Day; assisted in making the head dress of staff during the LSU anniversary; collected and planted host plants for the butterflies in the Butterfly Garden; co-sponsor and exhibitor during the First Garbage Recycling and Compost Fair	
Computer Science Students' Society (CCSS)	Facilitated CSSS recognition as a student organization by OSA; election of officers; planning of activities for the school year	
Mentors' Guild	Feeding of malnourished children in Pangasugan Elementary School; contest on poster making, slogan and essay writing during the "Buwan ng Wika"; selling of tickets for "ASIN Concert" in Baybay, Leyte; monthly <i>alay linis</i> in the College of Education surroundings; parade, parlor games, sports activity, teachers' day, and culmination of the Education Week celebration; Christmas tree making contest and Christmas party	
Asso. of Plant Brdg. Majors (APBM)	<i>Alay linis</i> ; film showing; tree planting; quiz show; assisted in the distribution of seeds	
Organization of Biology Students (OBioS)	Orientation program and acquaintance party; celebrated Biology Week with quiz show, exhibit, poster-making contest, essay writing contest, extemporaneous speaking contest, and Seminars on Solid Waste Management and Stem Cell Technology	
Forestry Students Society (FSS)	Orientation and acquaintance party; tree planting; <i>paligsahan sa gubat</i> ; <i>alay linis</i> ; co-sponsored College seminars	
LSU Extension Society	Gave assistance in activities during the Farmers' Field Day; culmination of the Provincial Cooperative Month, and giving of Christmas bundle of joy; and maintained the Baybay LGU-MAG Municipal Agriculture Office Nursery	
College of Educ. Supreme Student Council	Raffle draw for the purchase of 2 computers for students' use	
Student Body Organization (SBO)/LSULHS Students	Attended press conferences, Division Science Camp, Regional Seminar-Training on Parliamentary Debate, Garbage Recycling & Compost Fair, Campus Journalism Seminar for staff of Tiller magazine, 8 th POSTE Organization of Science & Technology; educational tour; JS promenade; CAT graduation and turning over ceremonies; tribute and to the parents graduating students; culmination and exhibits of English and SocSci subjects; conducted 1 st Student Leadership Congress; participated the street dancing during the Kaugmaran Festival; monthly cleaning, greening & beautification of the LSULHS campus and beach area; CAT presentation of sponsors and escorts; celebrated English month through different activities and contests; Christmas party	

ORGANIZATION	ACTIVITIES UNDERTAKEN	AWARD RECEIVED
SATELLITE CAMPUSES:		
LSU-Alangalang	Orientation; election of officers; playground demonstration; clean and green; recognition and graduation; JS prom; college intramurals; founding anniversary; leadership training	
LSU-Isabel	Orientation; Clean and green, JS Prom; recognition and graduation; election of officers; playground demonstration	
LSU-Villaba	Orientation; attended symposium; JS Prom; election rally and election of officers; sportsfest; homeroom/Christmas party; medical exam; activities during Book Week, Education Week, Buwan ng Wika Pambansa, Nutrition Month; commencement exercises	



The LSU Student Handbook.

assisted 319 (graduating students) for possible employment in 10 local institutions/agencies. It worked closely with the Department-Based Guidance Facilitators and Campus Ministers to address concerns on students' poor attendance/tardiness, poor academic performance and behavioral problems, and change of course work.

Student Handbooks were made available especially to new students in the University system to inform/guide them on the University policies concerning students.

The OSA staff of the LSU-Isabel Campus systematized their assistance to their students during the registration period, conduct of the Honors and Awards Convocation, and student counseling especially to those with poor academic performance.

Preparation of Instructional Materials

The *Guidelines for the Preparation of Instructional Materials* was approved by the Board of Regents (BOR) and distributed to the different

colleges and departments of the LSU system for immediate implementation.

Alumni

Alumni Achievements

Engr. Arthur It. Tambong, a 1984 BS Agricultural Engineering graduate (cum laude) of LSU and currently associate professor of the Mindanao State University (MSU) in Marawi City, won the *Best Paper Award* in Energy, Farm Power and Machinery during the 54th Annual National Convention of the Philippine Society of Agricultural Engineers (PSAE) on April 19-23, 2004 at the PCC Complex, CLSU, Nueva Ecija.

Alumni Support

Some alumni of the Department of Pest Management (DPM) gave financial support for the construction of the dome structure for the Butterfly Garden of the department.

The Australia-New Zealand ViSCA-LSU Alumni (ANZ) gave P21,500.00 for the renovation and improvement of the "Frog Fountain," one of the University's old landmarks located

near t
at the

Alum
The I
(LSU
office
on Au
of Mr.
Prof.
Prof. V
Ms.
(Treas
(Audi
(Publ
Dr. V
Bacus
Eliseo
Tulin

In sup
contri
the off
the I
17 alu
the
depart
news v
The tr
Alum
Office

Facu

Schol
Fifteen
faculty
studie
special
(MA) w
Depart
Agricu
Fulbrig
Fellow
DAAD
Agricu
Schola

Two
Alang
in MS
faculty
pursu
Scienc

near the old administration building at the lower campus of the LSU Main.

Alumni Activities

The LSU Alumni Association, Inc. (LSUAAI) installed its new set of officers during the LSU anniversary on August 9, 2005 and it is composed of Mr. Bernardo H. Tocmo (President), Prof. Efren B. Saz (Vice President), Prof. Winston M. Tabada (Secretary), Ms. Ginás A. Villagonzalo (Treasurer), Dr. Lemuel M. Diamante (Auditor), Atty. Emitterio Villanosa (Public Information Officer), and Dr. Victor B. Asio, Dr. Jose L. Bacusmo, Atty Jacinto B. Elle, Dr. Eliseo R. Ponce, and Dr. Edgardo E. Tulin (board members.)

In support of their role as news contributors for the Alumni Notes, the official publication of ACRO and the LSU Alumni Association, 17 alumni communicators based at the different offices/centers/departments of LSU were trained on news writing on November 4-5, 2004. The training was organized by the Alumni & Community Relations Office (ACRO).

Faculty

Scholarships

Fifteen (15) LSU Main Campus faculty members pursued advanced studies in different fields of specialization (9 for PhD and 6 for MS/MA) with scholarship grants from the Department of Agriculture-Bureau of Agricultural Research (DA-BAR), Fulbright-Philippine Agriculture, LSU Fellowship, CA-COE, ACIAR, DAAD, ASEAN-EU, College of Agriculture Center of Excellence Scholarship.

Two faculty members of the Alangalang Campus pursued studies in MS Tropical Ecology and one faculty member of the Villaba Campus pursued PhD degree in Animal Science.



Faculty Strength

During the year, 256 faculty members of the LSU Main Campus (98 Ph.D., 103 MS, and 55 BS) carried out the University's instruction, research, and extension activities: 49 of them were detailed in research centers, 1 on secondment in a government office, and 4 on sabbatical leave.

One-hundred two (102) faculty members of the satellite campuses performed their instruction, research and extension functions: 27 - in Villaba Campus (2 Ph. D., 17 MS, and 8 BS); 26 - Isabel Campus (1 Ph. D., 5 MS, and 20 BS); 24 - in Alangalang Campus (2 Ph. D., 8 MS, and 14 BS); and 25 - Tolosa Campus (2 Ph. D., 15 MS, and 8 BS).

Seminars/Workshops/ Trainings

As part of their drive for competence and excellence in teaching, the Office of the Vice President for Academic Affairs (OVPA) and the Office of the Curriculum and Instructional Materials Development (OCIMD) jointly sponsored the "Orientation Seminar of Part-Timers, Graduate Teaching Assistants (GTAs) and New Instructors of LSU" which was



Dr. Paciencia P. Milan, LSU President, swears into office the new set of officers of the LSU Alumni Association (top); and the newly constructed dome at the Butterfly Garden of the Dept. of Pest Management with financial support from some alumni of the department (bottom).

conducted every Tuesday and Thursday at 4:00-4:45 p.m. The participants were updated on the appropriate teaching strategies and class policies, test construction, and evaluation in various technical fields; familiarized with the duties and responsibilities of GTAs as well as the university policies and pertinent civil service rules and regulations; and reminded on the moral values, work ethics, and good personal conduct.

To strengthen the Master of Science (MSc) in Rural Sociology degree program of the Institute for Strategic Research and Development Studies (ISRDS), an International Planning Workshop was held on September 6-7, 2004 at ISRDS which was sponsored by the Friedrich Ebert Stiftung, University of Hohenheim, Germany; the National Institute of Development Administration, Thailand; and the Universiti Kebangsaan, Malaysia.

A total of 1,025 academic staff of the LSU System attended trainings/seminars/conferences during the year and these included 54 international, 132 national, 96 regional, and 266 local trainings (Table 4).

Awards

Dr. Rodolfo G. Escalada, newly retired professor of LSU, received *Professor Emeritus* award from LSU on May 2004 in recognition of his exemplary performance as faculty member of the University.

Faculty Achievements/Assignments

Most of the faculty performed added assignments as chairmen/members of the different committees in their respective colleges and of the University, while some served as reviewers in the Agriculturist Licensure Review at LSU.

The following faculty members traveled abroad in line with their research/academic tasks:

Dr. Justino M. Quimio - visiting researcher at the University of Freiburg, Germany from April 2004 to July 2004.

Dr. Antonio L. Acedo, Jr. - visiting scientist at King Mongkut's University of Technology (KMUTT), Bangkok, Thailand from May 2003 to April 2004.

Dr. Onofre R. Pagsanghan, retired professor of Ateneo de Manila, shares insights on "Teaching as a Vocation" (left); and participants of the International Workshop to Strengthen the MSc in Rural Sociology (right).

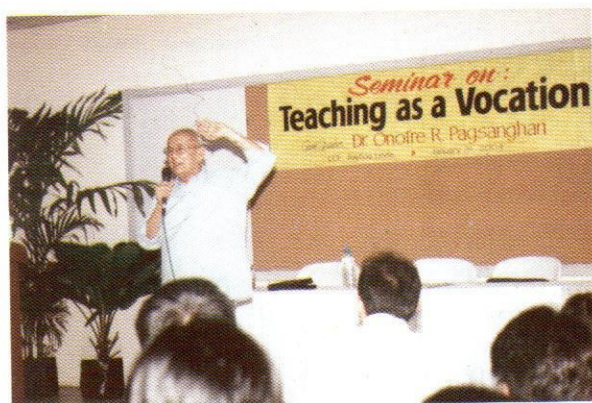


Table 4. Trainings attended by faculty in 2004.

Dept/College/Center	International		National		Regional		Local	
	Trng.	Participants	Trng.	Participants	Trng.	Participants	Trng.	Participants
College of Agriculture								
DPM	12	15	14	23	3	12	22	47
DAS	-	-	7	9	4	9	21	36
DOH	1	1	5	6	2	2	9	14
DDC	1	1	2	3	2	2	1	2
DASS	3	4	-	-	-	-	16	23
DFCS	-	-	-	-	2	2	9	10
DGRPB	1	1	-	-	3	3	3	3
College of Engineering & Agri-Industries								
DAE	-	-	4	6	2	2	4	4
DBM	-	-	1	1	-	-	4	4
DCST	-	-	2	2	2	2	5	7
DOE	2	2	6	6	5	5	6	10
DFST	2	3	6	13	3	8	12	23
College of Vet. Medicine	1	1	6	11	-	-	9	21
College of Arts & Sciences								
DBS	6	9	9	15	6	6	10	17
DLABS	-	-	1	1	-	-	-	-
DoPAC	-	-	6	8	1	3	22	28
DMPS	-	-	2	3	1	1	-	-
College of Education								
DSE	2	2	-	-	8	12	11	38
DCDE	-	-	-	-	2	2	14	67
LSULHS	-	-	4	5	9	13	3	3
College of Forestry								
DAF	1	3	2	3	2	2	3	3
DFWMC	4	6	3	4	2	3	3	3
Institute of Human Kinetics	-	-	2	2	1	1	3	3
NSTP	-	-	-	-	-	-	6	13
SUB-TOTAL								
	36	48	82	121	60	90	196	379

Dept/College/Center	International		National		Regional		Local	
	Trng.	Participants	Trng.	Participants	Trng.	Participants	Trng.	Participants
Research Centers								
FARMI	4	4	4	4	10	22	4	4
ISRDS	1	8	4	4	2	4	3	5
ITE	1	2	4	4	3	5	3	5
MMDC	-	-	-	-	-	-	-	-
NARC	6	8	10	13	1	9	14	32
NCRC-V	2	2	-	-	2	4	2	2
PhilRootcrops	3	4	15	34	5	12	9	26
SUB-TOTAL								
	17	28	37	59	23	56	35	74
Satellite Campuses								
Alangalang Campus	1	1	6	7	5	7	13	61
Isabel Campus	-	-	3	7	3	4	9	20
Tolosa Campus	-	-	-	-	-	-	-	-
Villaba Campus	-	-	4	8	5	5	13	50
SUB-TOTAL								
	1	1	13	22	13	16	35	131
GRAND TOTAL								
	54	77	132	202	96	162	266	584

Dr. Bernardita P. Germano - visiting scientist at the Center for Tropical Marine Ecology, Bremen, Germany from May 7, 2004 to July 16, 2004.

Dr. Victor B. Asio - visiting professor at the Institute of Soil Science, Martin Luther University, Halle (SAALE), Germany, April 1, 2004 to June 30, 2004 through the German Academic Exchange Service.

Dr. Buenaventura B. Dargantes - study visit to the University of Hohenheim (UH), Germany from April 8, 2004 to June 30, 2004.

Dr. Paciencia P. Milan, LSU President - lecturer in the Institute of Plant Production and Agroecology in the Tropics and Subtropics, University of Hohenheim, Stuttgart, Germany from July 17 to August 3, 2005.

Dr. Erlinda A. Vasquez - visiting researcher at the University of Hohenheim, Stuttgart, Germany from July 1, 2004 to September 30, 2004.

Dr. Anabella B. Tulin - visiting researcher at Iwate University, Iwate, Japan from August 21, 2004 to November 20, 2004.

Dr. Eduardo O. Mangaoang - visiting researcher at the University of Goettingen, Germany from October 17, 2004 to November 2, 2004.

Dr. Julie D. Tan - visiting researcher at the Laboratory of Applied Microbiology, Hokkaido University, Sapporo, Japan from November 2-27, 2004.

A number of faculty also proved their technical expertise and research

proress thereby of scientific subsequent responsibilities

Dr. Othello B. Technical Advis

Dr. Misael T. Dip Regional Tec Vegetables; and Technical Team

Prof. Elizabeth L Regional Tec Ornamentals; and Technical Team

Dr. Rebecca Prof. Paciano T Regional Techn

Dr. Casimiro Prof. Enrique R Arsenio D. R Regional Tec Plantation Crop

Library Ser

Acquisitions

The University through donat exchange 1,301 materials which 24 journals, 4 V tapes, 4 CD-ROM 198 theses and studies/special issues of 6 new accessioned vo materials at the 59,951.

The LSU-Ala Library purchas titles) of books.

The LSU-Isabe 169 copies of courses. 18 vo Encyclopedia. ar Book of World F

prowess thereby earning the respect of scientific communities and subsequent special assignment/responsibilities, as follows:

Dr. Othello B. Capuno - Regional Technical Adviser in Region 7

Dr. Misael T. Diputado, Jr. - chairman, Regional Technical Team for Vegetables; and member, National Technical Team for Vegetables

Prof. Elizabeth D. Briones - chairman, Regional Technical Team for Ornamentals; and member, National Technical Team for Ornamentals

Dr. Rebecca M. Santiago and Prof. Paciano T. Quirol - members, Regional Technical Team for Fruits

Dr. Casimiro D. Carcallas, Prof. Enrique R. Alcober, and Prof. Arsenio D. Ramos - members, Regional Technical Team for Plantation Crops

Library Services

Acquisitions

The University Library acquired through donations, purchase, or exchange 1,301 print and non-print materials which include 1,007 books, 24 journals, 4 VHS tapes, 32 cassette tapes, 4 CD-ROMs, 21 VCD, 2 DVD, 198 theses and dissertations/case studies/special problems, and daily issues of 6 newspapers. The total accessioned volumes of learning materials at the end of 2004 reached 59,951.

The LSU-Alangalang Campus Library purchased 38 volumes (18 titles) of books.

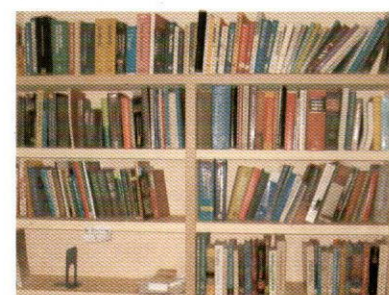
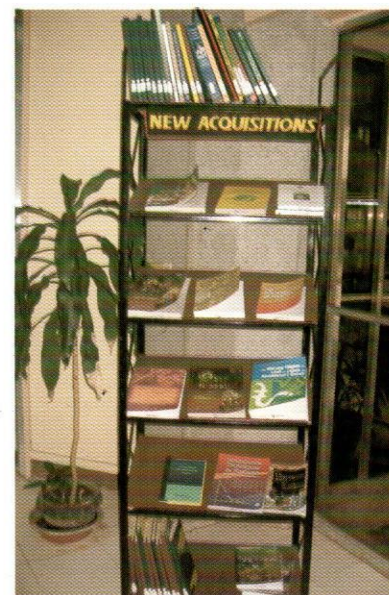
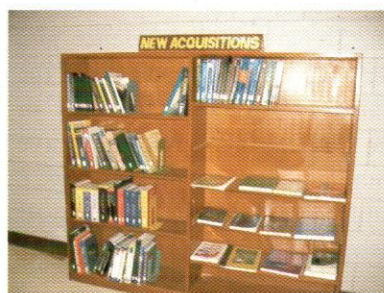
The LSU-Isabel Campus acquired 169 copies of books for various courses, 18 volumes of Science Encyclopedia, and 1 copy of Guinness Book of World Records.

The LSU-Villaba Campus Library purchased 266 books, 36 journals, 12 magazines, and daily issues of newspapers.

Donations

The University Library received donations from the *Books for the Barrios Inc.*, a foundation in California, USA - 1,325 book titles and 10 journal titles; *Lingkod Kalikasan* in Manila - books and journals in ecology; National Research Council of the Philippines (NRCP) - 2 journal titles, 21 book titles, a set of Philippine Science Encyclopedia, and 5 volumes of Philippine Plants and Their Contained Natural Products; Asia Foundation - 53 book titles; The International Science Foundation, Washington, USA - 1 set 21st Webster International Encyclopedia 2003 and 1 copy of Webster's Dictionary and Thesaurus 2002.

(Below) The newly acquired books and CD-ROMs/VCD/DVD of the LSU University Library, and books donated by the "Books for the Barrios, Inc.", California, USA.





MOA signing between officials of LSU and the Tongonan Workers' Union.

Dr. Mark Goettel of Leithbridge Research Center, Agriculture and Agri-Food, Canada donated his back issues of the journal, "The Mycologist" and "Journal of Canadian Entomologist".

The Department of Science and Technology (DOST) through the National Research Council of the Philippines (NRCP), gave complementary copies of NRCP publications to the College of Fisheries, LSU-Tolosa Campus.

Collaborations/ Linkages

LSU signed memoranda of agreements/understanding with the following: Tokyo University of Agriculture and Technology (TUAT) - for exchange of faculty, students, publication, and joint research and other scholarly activities; Tongonan Workers' Union (TWU), an association of regular employees of the Philippine National Oil Company (PNOC) Energy Development Corporation (Leyte Geothermal Production Field) - for the TWU scholarship at LSU of qualified

students from Ormoc City starting school year 2004-2005; Commission on Higher Education Regional Office (CHEDRO) - implementation of the Student Financial Assistance Program (STUFAP), an interest-free loan program of CHED for the financially needy 3rd year, 4th year and graduating college students; National Computer Center (NCC) - provide LSU with technical support and courseware developed by the National Computer Institute (NCI); and Eastern Visayas Information Sharing Network (EVISNet) - enable LSU to subscribe to EVISNet services by way of 128 kbps Internet Connection.

As part of their initiative to help the University harness institutional linkages, the following staff of the Department of Horticulture (DOH) established collaboration with foreign agencies/institutions: Dr. Marilyn M. Belarmino - sisterhood program with the Faculty of Horticulture of Chiba University, Japan for future faculty and student exchange and research collaborations; and Dr. Antonio L. Acedo, Jr. with King Mongkut's University of Technology, Thunburi, Bangkok (KMUTT), Thailand.

The University Library mustered support from other agencies and drew donations consisting of books, proceedings, journals, and other learning materials. The donor agencies include Philippine Council for Agriculture, Forestry and Natural Resources Research and Development (PCAARRD), International Rice Research Institute (IRRI), International Network for the Improvement of Banana and Plantain (INIBAP), Food and Agricultural Organization of the United Nations (FAO-UN), Australian Centre for International Agricultural Research (ACIAR), Crop Science Society of the

Philippine
Agricul
Researc
Resourc
(FRMP)
for A
(SEAN)
Bank (A
Internat
Washing

Acqui

The diffi
offices c
purchase
other o
applianc
learning
continui
enrich th

College o
- 1 unit
TV, mini
microscop
brush cut
cabinet.

College of
of scanne
the LSU
acquired 2
of telepho

Different
of Engine
1 unit eac
TV, DVD
computer
peanut m
table, 12
dispenser
calculator
Pentium I

Different
of Agricul
camera, c
engine, la

Philippines (CSSP), Department of Agriculture-Bureau of Agricultural Research (DA-BAR), Fisheries Resource Management Project (FRMP), Southeast Asian Network for Agroforestry Education (SEANAFE), Asian Development Bank (ADB), The Asia Foundation, International Science Foundation, Washington USA, and World Bank.

Acquisition

The different colleges/departments/offices of LSU acquired through purchase, donation or transfer from other offices some equipment, appliances, and books and other learning materials as part of their continuing drive to upgrade and enrich their resources.

College of Veterinary Medicine (CVM) - 1 unit each of aircon, flat screen TV, mini-video camera, trinocular microscope, grass cutter, paper cutter, brush cutter, and 2 units steel filing cabinet.

College of Education (CE) - 1 unit each of scanner, CPU and calculator while the LSULHS which is under CE acquired 2 units printer and 1 unit each of telephone, disk drive, and CPU.

Different departments of the College of Engineering and Agri-Industries - 1 unit each of projection TV, 43-inch TV, DVD mini-component, Pentium IV computer (server), peanut roaster, peanut miller, printer, conference table, 12 v battery, computer, water dispenser; 2 units UPS; 6 pieces calculator; 9 pieces datafiles; 16 units Pentium IV computers (workstations)

Different departments of the College of Agriculture - 1 unit each of digital camera, computer, refrigerator, Honda engine, lawn mower, water pump,

aircon, roto-tiller, TV, conference table, micro-mill village type electric engine; 2 units knapsack sprayer; 3 units gas range; 5 units sewing machine

ITE - valuable publications from CCEF; CD and DVD of Fishbase 2004 and published articles - from WorldFish Center.

LSU-Alangalang Campus - 2 stand fans; new text books, handbooks, manuals and guides, and installed 2 units telephone; 1 unit hand tractor with accessories; 12 pcs sprinkling cans; 2 units Knapsack sprayer; 30 pcs high back mono block chairs; 30 pcs mono block chairs with arm rest; 3 units 6-seater laboratory tables

LSU-Isabel Campus - 43 units computer set, 32 units computer table, 4 units printer, 4 units colored monitor, 2 units transformer, 3 units UPS, 2 stand fans, 2 electronic calculator, 2 open shelves cabinet, 1 desktop networking switch, 1 FAX Modem External, 1 portable planer, 1 swivel chair, 1 rota aire, 1 Javelin throw, and books.

LSU-Villaba Campus - 98 copies of different kinds of books, 1 unit each of computer, karaoke, Pentium 4 computer, and weighing scale, monitor, refrigerator, air pot, camera, 3 printers, 15-seater Nissan.

The 43-inch TV set (left) and DVD mini-component of the Department of Computer Science and Technology (right).







During the year, LSU implemented 198 research projects on rootcrops - 44, rural sociology/socioeconomics - 36, abaca - 22, marine biology/resources - 22, coconut - 11, vegetables - 11, livestock - 9, rice - 8, agricultural engineering - 8, corn - 6, agroforestry/forestry - 5, farming system - 5, GIS - 3, fruit - 1, legumes - 1, and others - 6 (Table 5 & 6). Sixty-seven (67) researches were funded by foreign agencies, 59 by LSU, and 53 by government and private agencies (Table 7 and Fig. 1)

Award-Winning Researches

Regeneration of Abaca Shoot tip through Somatic Embryogenesis

Halved shoot tips of Inosa and Putian abaca varieties were cultured in an initiation medium supplemented with different test concentrations of the following auxins: 2,4-D and 2,4,5-T. The effectiveness of auxin concentration was enhanced further by adding 1.0 mg/L BAP; and this promoted the production of globular cells and subsequently the growth of meristematic globules. The meristematic globules were transferred into the embryogenesis medium containing 0.5 mg/L BAP. Shiny globular masses appeared after three weeks and developed further into advanced embryos which were seen only through a microscope. Embryo germination increased up to four times when the somatic embryos were cultured in a medium containing 1.0 mg/L abscisic acid (ABA) for three weeks. The embryos were then transferred to a hormone-free medium (Medium III) for another three weeks. Rooting medium for the plantlets was not necessary because sub-culturing plantlets in half the strength of Medium III for at least two weeks already improved rooting. Using this procedure, 16.3 Inosa and 21 Putian

plants were obtained from one gram of somatic embryos after seven months. Analysis of the regenerants showed that the plants had the same morphology, tensile strength, and DNA profile with their donor plants. The superior vigor of the regenerants was also demonstrated by higher sucker formation, absence of disease infection, taller height, and higher stalk, tuxy, and fiber weight.

Status, Ecological Changes and Market Study of Rainforestation Farm Products

Three rainforestation sites, namely: Catmon, Leyte State University (LSU), and Sitio Cienda in Barangay Gabas, Baybay were assessed. It was observed that among the three sites, the LSU site had the greatest number of trees; the richest and the most diverse life forms; and the greatest arthropod population. It was also noted that more birds as well as tarsier and other vertebrates that migrated to other areas have returned to the site. The chemical properties of the soil in the three rainforestation farm sites were also noted to have improved as shown by the soil color and structure. However, considerable variation in the chemical properties of the monitored soil still existed, which suggests that whatever level of fertility rainforestation has achieved for the soil is not yet stable.

Table 5. Number and percentage of R & D projects/studies by commodity.

COMMODITY	No. of Projects/Studies	Percent (%)
Rootcrops	44	22.22
Abaca	22	11.11
Coconut	11	5.56
Ag. Engineering	8	4.04
Agroforestry/Forestry	5	2.53
Corn	6	3.03
Farming System	5	2.53
Fruit	1	0.51
GIS	3	1.52
Legumes	1	0.51
Livestock	9	4.55
Marine Biology/Resources	22	11.11
Rice	8	4.04
Rural Sociology/Socioeconomics	36	18.18
Vegetables	11	5.56
Others	6	3.03
TOTAL	198	100.00

Income was derived from rainforestation farms, as the cut branches were converted into round timbers and crafted into different products like racks, chairs, cribs, and telephone stand.

Strategies in Making a Sustainable Coconut-Based Enterprise Development Plan (SCEDPlan)

The program was conducted in Burabod, Biliran, Biliran and used participatory planning and training methodologies which were believed to be the first step towards formulating a need-based, socially relevant extension program in coconut farming. It started with the identification of farmer cooperators, followed by the formulation of the farm's development plans. Among the tools used to optimize

cooperation of farmer-cooperators included participatory mapping - where existing crops cultivated by farmers were mapped; farmer consultations and dialogues - to strengthen farmers' capacity to make informed decisions; and technical information on cultural management practices for each crop and market considerations. The project was perceived to have generated a sense of project ownership among farmers because it is when involvement of farmers is high that they would feel responsible for the success of their endeavor. The aforesaid processes were expected to ensure sustainability in the adoption of technologies/enterprise because the farmer-cooperators were made to select the technology/enterprise based on their felt need, preferences, resources, and skills.

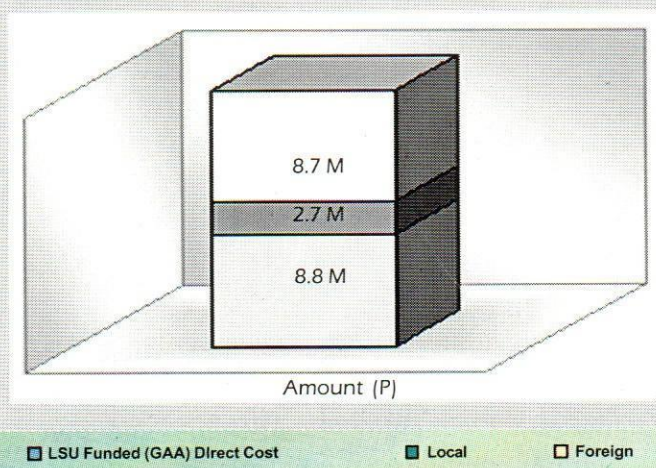
Table 6. Number and percentage of R & D projects/studies by funding agency.

FUNDING AGENCY	No. of Projects/Studies	Percent (%)
A. LSU Funded (GOP)	59	29.80
B. Foreign Funded		
ACIAR	11	5.56
ALO/USAID	24	12.12
ALO/CIIFAD	5	2.53
BSH, Germany	3	1.52
GSBS/BCL	1	0.51
CIAT/Thru PCC	2	1.01
DaimlerChrysler and German Dev't. Agency	3	1.52
EURONATUR	1	0.51
IFS	1	0.51
ISAAA/PCARRD	1	0.51
NIH, USA	1	0.51
PLAN International	4	2.02
LSU/TWAS	4	2.02
USAID/P-CRSP	1	0.51
TUAT, Japan/LSU	1	0.51
USAID Thru PHILRICE	4	2.02
SUB-TOTAL	67	33.84
C. Locally Funded		
DA-BAR	27	13.64
CIRDUP-DA	4	2.02
IPB-UPLB	1	0.51
LAMP	4	2.02
LSU/PHILRICE	2	1.01
PCARRD	2	1.01
PCARRD/LSU	1	0.51
PCASTRD	2	1.01
PCC/DOH	1	0.51
PCRDF	1	0.51
PHILRICE	4	2.02
PHILRICE/DA-RFU-8	1	0.51
PIDS	2	1.01
UP-Diliman	1	0.51
SUB-TOTAL	53	26.77
D. Side Study	19	9.60
GRAND TOTAL (A+B+C+D)	198	100.00

Table 7. R and D budget, CY 2004.

FUNDING AGENCY	AMOUNT
A. LSU Funded (GAA) Direct Cost	8,835,425.00
B. Local	
DA-BAR*	88,000.00
PCARRD	1,168,750.00
LAMP	300,000.00
PHILRICE	1,060,640.00
SUB-TOTAL	2,617,390.00
C. Foreign	
ACIAR	100,185.12
ALO/USAID	1,725,000.00
ALO/CIIFAD	363,000.00
BSH, Germany	2,242,781.70
CIAT/Thru PCC	100,000.00
DaimlerChrysler and German Dev't. Agency	2,062,000.00
EURONATUR	183,245.00
IFS	8,000.00
ISAAA/PCARRD	646,378.39
PLAN International	1,256,648.25
USAID thru PHILRICE	37,300.00
SUB-TOTAL	8,724,538.46
GRAND TOTAL (A+B+C)	20,177,353.46

Figure 1. R and D budget.



Estimating the Prevalence of *Schistosoma japonicum* in Animals with DBL

Schistosomiasis is a disease that threatens humans and animals alike because if there is stagnant water, *S. japonicum* parasites (through its intermediate snail host, *Oncomelania quadrasi*) could be present and proliferating. The prevalence of *S. japonicum* in domestic animals need to be investigated because, as reservoir hosts, they could transmit the parasites to humans. Fecal examination was employed to detect the presence of *S. japonicum* eggs in human and animal wastes. Results of the study conducted in the pilot barangays of Gandara and San Jorge in Samar, and Erosin in Bicol, showed that the Danish Bilharziasis Laboratory (DBL) fecal sedimentation technique could be used in screening the feces of animals which were naturally infected with *S. japonicum*. Statistical analysis showed that the DBL technique was sensitive and specific using a 3-day sample collection of feces, which means that during this time, diagnosis of schistosomiasis was above 90% accurate and reliable. Among the animals tested, *Schistosoma japonicum* was found most prevalent in field rats -31.48%; dogs - 19.94%; cats - 11.67%; and pigs - 2.65% but nil in cattle and goats and very low infection in carabaos. Mass treatment of infected animals in endemic areas was the immediate means of eliminating the source of infection to humans and thus break the cycle of communicability.

Carbon Storage and Sequestration Potential of Smallholder Tree Farms

A study to predict the carbon storage and sequestration capacity of Gmelina (*Gmelina arborea*) and



Fecal sampling in dogs (a) and laboratory examination of fecal samples (b).

Mahogany (*Swietenia macrophylla*) was conducted to highlight the crucial role of trees in environmental conservation. Measures of the stand volume, biomass, and carbon density of the said tree species were taken from small plantations in Albuera and Matalom, Leyte; Panan-awan and Badiang in Maasin City; and Macrohon in Southern Leyte. The data were fitted into the Chapman and Richards function to predict the carbon storage and sequestration potential of the said trees. The average carbon storage capacity of a smallholder tree farm could amount to 39.5 and 76.83 MgC ha⁻¹. A five-year old Gmelina tree farm could reach up to a 197.5 MgC ha⁻¹ of carbon storage level and 384.15 MgC ha⁻¹ for Mahogany. Moreover, a Gmelina tree farm is capable of an average carbon sequestration of 4.71 MgC ha⁻¹ yr⁻¹ while Mahogany is capable of 5.01 MgC ha⁻¹ yr⁻¹. This points out that Gmelina and Mahogany alone could already store and sequester big amounts of carbon; hence, if vast tracks of idle lands will be planted with trees, more carbon emission can be absorbed from the atmosphere.

Technologies/Information Patented or Identified for Patenting

- ♦ Sweetpotato Pickles
- ♦ Cassava Grates Processing System
- ♦ Sweetpotato Harvester
- ♦ Sago Grating Machine

Germplasm Collection

NARC maintained the largest abaca germplasm collection in the country, consisting of 498 cultivated types, 144 wild relatives, and 102 hybrids which are conserved and maintained both in the field (*ex situ*) and *in vitro*; NCRC maintained 41 accessions of coconut in the genebank; and PhilRootcrops' germplasm collection totaled to 2,040 accessions, consisting of sweetpotato - 936; cassava - 322; yam - 391; taro - 304; arrowroot - 36; and yambean - 51.

Variety Development

Cassava. Four cassava varieties developed by PhilRootcrops, namely: NSIC Cv 27 (OMR 36-05-09), NSIC Cv 28 (CM 9158-4), NSIC Cv 29 (G95-02-

04), and NSIC Cv 30 (CMR 25-05-112), were approved and released by the National Seed Industry Council (NSIC) for national adoption. The new cassava varieties have the following characteristics: NSIC Cv 27 - average root yield is 29.1 tons per hectare (with 40.1% dry matter, 30.1% starch content, low HCN content) and matures in 10-12 months; NSIC Cv 28 - average root yield is 36.9 tons per hectare (with 38.3% dry matter, 27.6 % starch content, medium HCN content) and matures in 10-12 months; NSIC Cv 29 - average root yield is 27.7 tons per hectare (with 36.5 % dry matter, 25.1 % starch content, low HCN content) and matures in 10-12 months; NSIC Cv 30 - average root yield is 31.3 tons per hectare (with 37.8 % dry matter, 27.0 % starch content, low HCN content) and matures in 10-12 months.

Sweetpotato. A new sweetpotato variety, NSIC Sp 30 (JK 027), was approved by NSIC and released for national adoption. It has an average yield of 13.42 tons per hectare (with 31.71% dry matter, 9.27% starch, 3.47% sugar content), is moderately resistant to weevil and resistant to scab, matures in 105-120 days, and has an acceptability of 7.10%.

Taro. NSIC G-9 (GS-385) is a new yam variety which was likewise approved by NSIC and released for national adoption. It has an average yield of 8.85 tons per hectare (with 44.07% dry matter, dark purple corm skin color), matures in 8 months, and resistant to leaf blight.

Varietal Improvement

Taro. Nineteen (19) promising taro genotypes (8 NSIC varieties and 11 TANSOA acquired cultivars) were utilized as parent materials for breeding; and these produced three improved genotypes, namely: GS-385,

The sago grating machine.



GO 467, and G more promising check varieties (l in terms of dry r resistance and the regional eva

Cassava. Thirty selected and materials in process, 12 prom propagated in th characters as foo while another 7 multi-location te namely: CMR 40 50-3, were ident to both spider mi

Production

Yam. Bulbils of a as planting n production. Dire proved to be mo evidenced by t yield than the counterparts esp months.

Cassava. Two Golden Yellow a found to be resis performed well i yield, and harve experimental peri

Microbe Cu Fermentati

PhilRootcrops ma of bacteria, 9 str 2 strains of y **Bacteria** - *Bacill subtilis* AHU 10 *faecalis* La3, En D31676, *Esche Escherichia coli saiz* 15521, *Lacto Lactococcus la Lactococcus la Listeria innocua,*

GO 467, and GC-472, that showed a more promising performance than the check varieties (PSBG-5 and NSIC G8) in terms of dry matter content, disease resistance and eating quality, during the regional evaluation.

Cassava. Thirty (30) accessions were selected and utilized as parent materials in the hybridization process; 12 promising lines are being propagated in the field for important characters as food, feed and industry; while another 7 lines are undergoing multi-location testing. Two hybrids, namely: CMR 40-40-3 and CMR 39-50-3, were identified to be resistant to both spider mites and scale insects.

Production

Yam. Bulbils of aerial tubers were used as planting materials for yam production. Direct planting of bulbils proved to be more advantageous as evidenced by their much higher yield than their pre-germinated counterparts especially during dry months.

Cassava. Two cassava varieties, Golden Yellow and Rayong 5, were found to be resistant to drought and performed well in terms of biomass, yield, and harvest index during the experimental period.

Microbe Culture and Fermentation

PhilRootcrops maintained 14 strains of bacteria, 9 strains of molds, and 2 strains of yeast, as follows:

Bacteria - *Bacillus subtilis*, *Bacillus subtilis* AHU 1035, *Enterococcus faecalis* La3, *Enterococcus faecium* D31676, *Escherichia coli* 10a, *Escherichia coli* PUC, *Lactococcus sake* 15521, *Lactococcus lactis* 11454, *Lactococcus lactis* MG 1363, *Lactococcus lactis* 1947, *Listeria innocua*, *Salmonella typhimurium*, and

Staphylococcus aureus; **Molds** - *Alternaria brassicicola*, *Alternaria sp.* S-1, *Aspergillus awamori*, *Aspergillus flavus* var. *asper* AHU 705, *Colletrichum sp.*, *Fisarium sp.*, *Geotrichum sp.*, *Lasiodiplodia theobromae* and *Penicillium sp.*; and **Yeast** - *Candida albicans* Cal 4 and *Saccharomyces cerevisiae*.

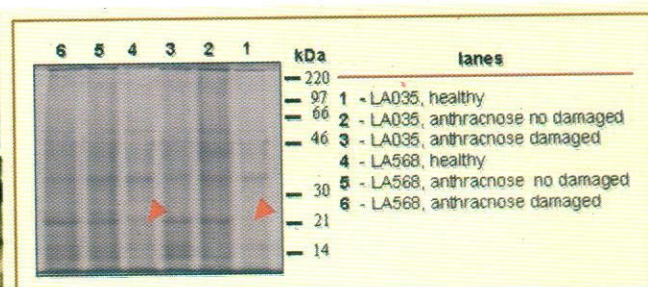
Endophyte Isolates. Twenty one endophyte isolates (12 bacteria and 9 molds) showed positive results against 1 or more of the 4 indicators tested for antimicrobial activity using their supernatants against the 4 indicator microorganisms. Results reveal that almost all the 21 endophyte isolates exhibited slightly clear zone of inhibition when tested against *L. theobromae*, slightly clear zone of inhibition against *D. natalenses* (heated and no treatment). Isolate U221 exhibited very clear zone of inhibition when tested against *B. subtilis* for both heated and no treatment, while isolates 125133 and 125131 exhibited very clear zone of inhibition against *B. subtilis* for heated treatment only. The results indicate that the isolates may have microbial properties against the tested indicator microorganisms.

Biotechnology

Protein Expression Profiling is used to discover proteins associated with the biochemical state of the sample in response to some stimuli. The tool was used to observe the biochemical makeup of rootcrops under



Drought-resistant cassava varieties: Golden Yellow (top) and Rayong (bottom).



(Below) Protein profile of healthy and anthracnose - infected yam, profile of healthy ones are indicated by red arrows.

The new rootcrop products: cassava grates cheesy bar (top), cassava grates espasol (middle), and pickles from singkamas and sweetpotato (bottom).



production and post-production stresses. Five protein expression profiles were established: 55kDa protein was overexpressed in all acrid varieties of taro compared to non-acrid ones which illustrated that differences in protein bands exist between acrid and non-acrid taro samples; yam varieties susceptible to anthracnose displayed a very distinct protein band of 22kDa which is absent in non-infected varieties; and consistent 30kDa protein expression among mite-infested plants which indicated that the host plant produced greater amount of protein in response to infection. Protein expression profiling provides a tool for determining biochemical markers for diagnostic purposes and in developing control measures for the prevention of diseases in rootcrops, and as such, could be used as basis for varietal improvement efforts.

Proliferative Effects of Plant Extracts Towards Mouse Spleen Cells and Bone Marrow Cells.

Extracts of 45 local plant species were evaluated for their proliferative effects towards mouse spleen cells and bone marrow cells to identify indigenous plant species that can be used as source of cytokine mimetics. Proliferation assay using the interleukin -3 (IL-3) as standard positive control revealed that the extracts of leaves and roots of sweetpotato (*Ipomoea batatas*), yam (*Dioscorea alata*), leaves of buyo (*Piper betle*), and garlic (*Allium sativum*) were very effective in promoting cell proliferation of both splenocytes and bone marrow cells, increasing the cell concentration 5 to 10 times. The extracts of taro (*Colocasia esculenta*) leaves and roots and cassava (*Manihot esculenta*) stimulated the growth of

spleen cells only. The optimum concentration of protein required to exhibit maximum biological response ranged from 1.25 micrograms to 5.0 micrograms per 100 microliter of culture medium. The mimetic activity of the six months stored promising extracts did not decline, suggesting that the activity of the extracts was stable.

Engineering

Dried Grates Processing Machine.

A multifunctional processing machine was developed to produce dried cassava grates. It has a **grater** for grating the fresh cassava tubers, **spinner** for removing the excess water from the fresh grates before drying, **pulverizer/siever** for pulverizing the lump of grates formed after spinning and separating the grates from the ungrated or woody cassava portions, and a **rotary drum dryer** specifically designed for drying the cassava grates. The system has a capacity of 20 kg of fresh cassava/hr and can continuously produce good quality dried cassava grates regardless of weather conditions.

Product Development

New Rootcrop Products. Three new products were developed from rootcrops and these include: cassava grates espasol, cassava grates cheesy bar, and pickles from a combination of sliced singkamas and sweetpotato (RC 2000).

Product Flavoring. Sesame seeds were less acceptable as flavoring for cassava espasol.

Product Ingredient. The addition of 20% cassava starch improved the quality of the cassava cheesy bar.



Mature for D

The re
Univer
mature
DFST -
peanut
fruits; N
and gin
under
PhilRe
process
cassava
siever, a
cassava
Cv-28, M
new sw
27), and

Research

Collect
Charac
Germpl
Cluster a
data rev
3-5 maj
5-8 gen
indicati
genetic
Twelve
were ide
bunchy-t
Gaes #1
Gomez l
#2. Pular
Inosa #1
Seven of



Mature Technologies for Dissemination

The research constituents of the University dished out an array of mature technologies, as follows: **DFST** - flavored grease-free roasted peanuts, sulfite-free dehydrated fruits; **NCRC-V** - banana production and ginger production technologies under coconut plantation; **PhilRootcrops** - dried grates processing system (which include cassava grater, spinner, pulverizer/siever, and rotary drum dryer), new cassava varieties (NSIC Cv-27, NSIC Cv-28, NSIC Cv-29, and NSIC Cv-30), new sweetpotato variety (NSIC Sp 27), and taro variety (NSIC G9).

Research Highlights

Collection, Maintenance & Characterization of Abaca Germplasm

Cluster analysis using morphological data revealed 108 clusters with only 3-5 major groupings consisting of 5-8 genotypes per cluster and indicating the presence of wide genetic variability in the collection. Twelve (12) promising accessions were identified as resistant to abaca bunchy-top virus (ABTV). These are Gaes #1, Javaque #1, Amokid #1, Gomez hybrid, Javaque #2, Samoro #2, Pulang Bato, Bisaya #2, Inosa 315, Inosa #16, Wild #13, and Wild #15. Seven of these accessions have fiber

yields ranging from 1.0 tons/hectare to 2.04 tons/hectare. Another set of 16 accessions were identified as resistant to fusarium wilt while 11 accessions were found to be moderately resistant to the same disease.

Out of the 80 accessions and hybrids screened for acid tolerance at the early stage of growth, 12 accessions and 9 hybrids were identified as potential acid tolerant. Moreover, 38 promising accessions were identified as suited for pulp and paper manufacture, 42 for handicraft industry, 43 for field evaluation/replicated trial, and 7 accessions for regional or multi-location trial.

Village-level Fiber Twisting Machines

Initial results of *bachac* yarn production using a combination of 8-teeth x 32-teeth gears produced good *bachac* yarn, which was, however, flat and had some indentation. Nice *bachac* yarn was produced after replacing the corrugated pulling rollers with smooth pulling rollers.

Comparative evaluation between the traditional wheel twisting (*bilyo*) and the machine twisting was conducted in Southern Leyte. Results showed highly significant interactions on the capacity and efficiency of the twisting methods and operators. In general, the machine technique consistently



The Cassava Grates Processing System composed of: a) cassava grater, b) pulverizer/siever, c) spinner and d) rotary drum dryer submitted for patenting by PhilRootcrops; and the abaca fiber twisting machine fabricated by the National Abaca Research Center (bottom).

showed significantly higher twisting capacity of 219m/hr compared to the traditional method of only 167 m/hr. All operators produced significantly higher output capacities and efficiencies in the machine twisting than the traditional technique.

Acceptability evaluation of *bachac* twines showed highly significant differences among the three twines in terms of cleanness, uniformity and degree of twist, and general acceptability. The machine S-twine had the highest acceptability rating of 8.63, followed by the machine Z-twine with 8.05, and traditional twine with 7.7.

Documenting Instructive Cases in Community-Based Natural Resources Management Project Implementation

Under this project, a video documentary entitled "Preserving the Magnificent Three" was produced highlighting the efforts of the local government of Lawaan, Eastern Samar in preserving the Bulosao Watershed and the three waterfalls. A video documentary script and feature article on how the community in sitio Cienda, Baybay, Leyte manages Mt. Ginsamayan, a mountain in Leyte's Central

Cordillera, was likewise prepared. Furthermore, more sites with good environmental governance were identified which include the maintenance and protection of mangrove stands by the residents of Brgy. Punta, Baybay, Leyte; and the development, maintenance, and protection of the mangrove areas in Palompon, Leyte.

Improving Teaching-Learning in Natural Resources Management Courses

The Instructional Design Team of the Department of Development Communication came up with activity guides for its course in DC 135 - Science Reporting which is designed in CD entitled "Science Unplugged." It also conceptualized and began the development of the multimedia learning material on watershed management called "Waterways" tailored fit for students taking BS in Forestry.

System of Rice Intensification (SRI) Regional On-Farm Trials

The seven (7) farmer-cooperators who conducted SRI on-farm trials during the wet cropping season using hybrid and inbred lines of rice obtained an average rice yield of 9.42 t/ha. The cooperators revealed that early planting, wider spacing distance, use of organic fertilizers/ animal manure, and intermittent water management greatly influenced higher productivity. It is believed that SRI is a new practice in rice culture which ushers in greater productivity and income to farmers in Region 8.

Enhancement of Community-Based Natural Resource Management in Cienda Watershed

The vital initiatives carried out under this project include soil, water and forest resources, and wildlife population inventories in the CBFM

Farmer leaders, local government officials, and LSU researchers during the System of Rice Intensification (SRI) Field Day in Brgy. Maganhan, Baybay, Leyte.



area of Cienda; and skills enhancement training on natural resource management, first aide techniques, and improved rice production.

Enhancement of the Knowledge Management for the National Research and Development System for Agriculture and Fisheries (NaRDSAF)

This project ensured the transfer of the R&D database from MS Access backend to Microsoft SQL for readiness to launching the system for the web and revised the database structure to comply with the Department of Agriculture's (DA) Research Management System (DARMS) requirement. It also refined the front-end modules of the R&D system; Daily Time Recording System of the Bureau of Agricultural Research (BAR) which involved the development of modules to generate Employee Leave Cards, Daily Time Records with computed leave credits for permanent employees, and net basic salary of contractual staff based on their actual service rendered time for the month; and Document Tracking System of BAR.

Optimization of Flavored Oven-Roasted Peanuts

Statistical analyses revealed that the overall acceptability, color, aroma, texture, taste, and flavor of the different roasted peanut products were significantly different from each other regardless of garlic levels. Peanut treatments roasted at 45 minutes obtained the highest texture acceptability scores at 4%, 6% and 8% garlic levels. Results also showed that levels of garlic and roasting time influenced taste acceptability results. The highest taste acceptability score was noted at 4% garlic level at 45 minutes roasting time, which had significantly higher taste score than the treatment at 50 minutes roasting time.



Protected Cultivation of High Value Vegetables as Influenced by Crop Rotation Scheme and Cultivation System

Protected cultivation enhances year-round production of high value vegetables when growing them in the open fails to produce high yield and net returns. Lettuce grown during the November 2003-February 2004 cropping period performed best in terms of yield and profitability under protective structure. Sweetpepper grown in the second cropping (February 2004 - May 2004) under protected cultivation gave significantly higher yield and profit than those grown in the open. The same is true with tomato and cabbage planted in June to October 2004. Using the tunnel-type protective structure is a feasible off-season production technique for high value vegetables. The most promising plant rotation scheme identified was sweetpepper-cabbage-lettuce or tomato-cabbage-lettuce and this was found to do well under protected cultivation system.

The tunnel-type structure for protected cultivation of high value vegetables.

Significant Results of Completed Researches

Optimization of Tissue Culture Techniques for Initiation, Proliferation & Mass Propagation of Disease-Free Planting Stocks

Abaca variety *Inosa* is best suited for pulp and paper industry due to its high pulping recovery and excellent pulping characteristics. Shoot tips of this abaca variety were grown in different modified Murashige and Skoog (MS) media to determine their extent of propagation (optimum, medium or rapid propagation). Shoot initiation and proliferation were higher in the modified media compared to the MS medium (standard). High percentage of bacterial and fungal contamination ranging from 64-97% was observed when explants were collected from the field during rainy days. However, with the incorporation of chloramphenicol into the medium, contamination was significantly reduced but not totally eliminated or controlled.

Induction of Somatic Embryogenesis and its Applications for Genetic Improvement in Abaca

A protocol was developed for abaca regeneration using shoot tips from sword suckers as explants, and agar-solidified Murashige and Skoog (MS) medium with synthetic growth regulators as follows: 2,4-dichlorophenoxyacetic acid, 2,4,5 trichlorophenoxyacetic acid, 6-benzylamino purine, and abscisic acid. The somatic embryos were capable of germination, development into plantlets, and successful establishment in the field. Using the protocol, an average of 16.3 *Inosa* and 21 *Putian* plantlets were regenerated from one gram of somatic embryos in 7 months. A projected

propagation rate of 196 *Inosa* and 252 *Putian* plantlets can be produced from one shoot tip explant in 7 months. The plantlets have morphology and DNA profile similar to donor plants, indicating clonal characteristics. The present protocol shows an improvement in propagation rates over using corm pieces or micropropagation technique. It also permits the production of highly regenerable somatic embryos which are potentially useful materials for genetic transformation studies.

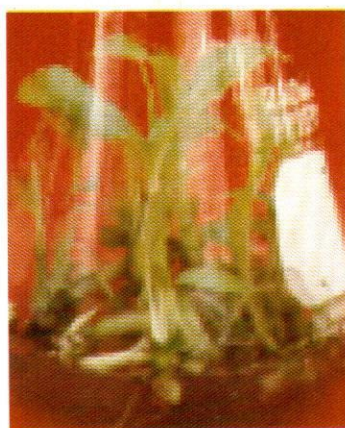
Appropriate Planting Distance and Intercropping Schemes for Abaca

The three planting distances and different intercropping schemes used did not significantly affect the growth and yield performance of abaca. However, among the treatments used, abaca planted at 2 x 2 m with sweetpotato-peanut-ginger (D_2M_2) provided the highest net income while abaca planted at 2.5 x 2.5 m using the squash-yautia-yautia (D_3M_3) intercropping scheme registered the lowest yield. LER and ATER analysis showed that D_2M_2 and D_1M_3 gave the highest values, respectively. Interplanted abaca in D_2M_2 produced 331.7% more relative to its monocrop component which resulted to LER of 6.05. Among the planting distances used, planting abaca using farmer's practice (D_1) and at 2 x 2 m (D_2) turned out higher LER and ATER values, respectively. Likewise, among the intercropping schemes used, sweetpotato-peanut-ginger (M_2) and mungbean-peanut-paco (M_3) were found to be more appropriate compared to the farmer's practice (squash-yautia-yautia).

Research Awards

Dr. Edgardo E. Tulin of the Philippine Root Crop Research & Training

Mature abaca somatic embryos.



Center (PhilRootcrops) was granted a *professorial chair* by the Philippine Agriculture and Resources Research Foundation, Inc. (PARRFI) for 2004.

Engr. Feliciano G. Sinon, assistant professor of the National Abaca Research Center (NARC), won the *Best Paper Award* (Downstream Research Category) during the 35th Crop Science Society of the Philippines (CSSP) Annual Scientific Conference on March 2, 2004 at Lanang, Davao City for his project, "Development of a Village-Level Fiber Twisting Machine."

Dr. Antonio L. Acedo, Jr., professor of the Department of Horticulture (DOH), was given recognition as the regional winner of the *2004 CHED Republica Award* during the 10th Anniversary Celebration of the Commission on Higher Education (CHED) on May 18, 2004 at the Century Park Hotel, Manila. His research study, entitled "Fruit Ripening and Disease Control in Bananas and Mangoes by Hot Water Treatment," was published in the Philippine Journal of Agricultural and Biosystems Engineering in 2002. He was also accorded the *Best Science Research Mentor Award* by the Department of Science and Technology-Intel Philippines on March 3, 2004 at the University of the Philippines, Diliman, Quezon City.

Dr. Marilyn M. Belarmino of the Department of Horticulture (DOH) garnered the *Outstanding AFMA R & D Paper Award* for her paper entitled "Regeneration of Abaca (*Musa textiles* Nee) from Shoot Tip Explants through Somatic Embryogenesis" during the 16th DA-BAR National Research Symposium & Investors' Forum on October 5, 2004 at the BSWM Convention Hall, Diliman, Quezon City. The same research paper won for her and her

research partners - Dr. Lelita R. Gonzal and Ms. Elizabeth C. Parac, the *Outstanding Basic Research Award* and the *Best Paper - Basic Category* during the 16th Regional Symposium on R & D Highlights held in Sabin Resort Hotel, Bantigue, Ormoc City on August 30-31, 2004.

The other winners during the 16th Regional Symposium on R & D Highlights were the research teams led by Dr. Ma. Juliet C. Ceniza that won the *Outstanding Applied Research Award* for their project dubbed "Status, Ecological Changes, and Market Study of Products of Rainforestation Farms"; and Prof. Luz O. Moreno that obtained the *Outstanding Poster Award (Agriculture Category)* for their entry entitled "Fiber Characteristics of Promising Abaca Accessions in NARC Germplasm Suited for Specific Industry End-users."

Dr. Eduardo O. Mangaoang of the College of Forestry received the *Outstanding Centennial Alumnus Award in Forestry Education* given by the Polytechnic University of the Philippines (PUP) on August 12, 2005.

Dr. Lemuel M. Diamante of the Department of Food Science and Technology scooped awards as research adviser from the following agencies: SEAMEO-INNOTECH - *Best Adviser Award* in Information and Technology, Yale University - *Yale Engineering Award*, Intel USA - *Intel Excellence in Computer Science Award*, and Intel Philippine - *3rd Grand Prize Winner (Adviser)* on March 5, 2004 during the Intel Philippines Science Fair, National Level.

Prof. Algerico M. Mariscal of the Philippine Root Crop Research & Training Center (PhilRootcrops) received the *Outstanding AFMA*



Dr. Bernardita P. Germano receiving the Best Research Paper Award from PCAMRRD Deputy Executive Director Cesario Pagdilao.

R&D Paper Award during the 16th DA-BAR National Research Symposium & Investors' Forum on November 5, 2004 at the BSWM Convention Hall, Diliman, Quezon City for his paper entitled "Adaptability Traits and Mechanism of Cassava to Survive Under Environmental Stress (Drought Condition)."

Dr. Bernardita P. Germano of the Department of Biological Science (DBS) received the **Best Paper Award** from PCAMRRD during 2004 Zonal R & D and Planning Workshop on December 8, 2004 at the Ritz Tower de Leyte, Tacloban City for her paper entitled "Population, Reproductive and Fishery Biology of the Ear Abalone, *Haliotis asinina* Linne., in Leyte and Samar."

Drs. Lelita R. Gonzal and Dr. Canesio D. Predo of the National Abaca Research Center (NARC) made it as finalists to the **Best Poster** and **Best Paper Award** (Upstream Category), respectively, during the 35th Crop Science Society of the Philippines (CSSP) Annual Scientific Conference on March 8-12, 2004 at Lanang, Davao City.

Collaboration

LSU entered into memorandum of understanding (MOU)/agreement (MOA) with the following agencies/institutions:

University of the Philippines Los Baños and Bureau of Agriculture Research - collaborative understanding through the implementation of the project "Ecotypic Variation of the Asian Corn Borer, *Ostrinia furnacalis* Guenee Populations in the Philippines-Leyte Site."

Philippines-Australia Local Sustainability Program, Municipal Government of Lopez Jaena, Misamis Occidental, LSU-based PhilRootcrops, and ViSCA Foundation for Agricultural and Rural Development, Inc. - implementation of the Lopez Jaena municipal crops processing support project.

Department of Agriculture-Southern Tagalog Integrated Agricultural Research Center (DA-STIARC) - for the transfer of makapuno hybrid seedlings for testing.

Department of Agriculture Field Unit No. 7 - Central Visayas Integrated Agricultural Research Center (DA-7 CENVIARC) - for the dissemination of root crop technologies. Under this agreement, the Philippine Root Crop Research and Training Center (PhilRotcrops) and the Department of Food Science and Technology (DFST) shall "make available to CENVIARC their technologies on root crop products and by-products utilization/processing; and assist/coordinate in the establishment of verification trials and pilot commercialization related to root crop products and by-products utilization/processing."

Department of Agriculture (DA); Department of Trade and Industry (DTI)-Samar Provincial Caretaker; TESDA of Catbalogan, Samar; Department of Science and Technology (DOST), Catbalogan Samar; Mayor of Paranas, Samar; and the President of the Wright Peanut Processors Association (WPPA) of Brgy. Buray, Paranas, Samar on May 5, 2004 at the Casa Anson, Tacloban City - for the development of the peanut industry in Eastern Visayas, a project conceptualized and initiated by the Department of Food Science and Technology (DFST) of LSU.

Triple A Plantech Enterprises of San Pedro, Laguna and Bali Farms and Crops Research Center (BFCRC) of Cagayan de Oro City - on the adoption of micropropagation technology for purple yam or ubi (VU-2 and Kinampay). The parties concerned share a common understanding of helping develop the root crop industry and complement their resources to effectively use the developed ubi tissue culture technology.

The following agreements were also formalized: CIAT-PCC-FARMI Project on Carabao Milk Production; FARMI-ICRAF project on tree Seed Domestication; and FARMI-led SRI project for Region 8 in collaboration with LGU, NGO, DA, and other stakeholders.

Acquisitions

The University research constituents acquired the following resources for research:

FARMI - auto focus camera, printer, CD writer and 3 CPU.

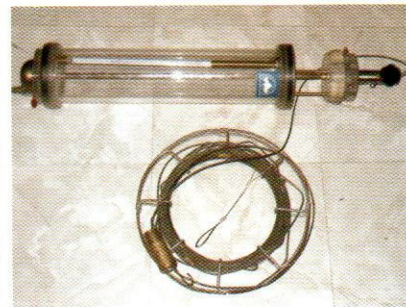
ISRDS - 20 monoblock armchairs, handy vacuum cleaner, 6 books

donated by University of Hohenheim, Germany, 12 books and newsletters from FAO-UN, 4 videotapes (documentary films) from FAO-UN and ADB, 65 textbooks, and 16 occasional papers from FES c/o Dr. Heinz Bongartz.

NARC - Temporary Immersion System with complete accessories, pump, flame sterilizer, computer, 3 laboratory/utility cart, and constructed a shed house for the generator from DaimlerChrysler and German Development Agency/ University of Hohenheim; printer, electric meter, and hot and cold water dispenser from NARC funds.

PhilRootcrops - 1 unit each of electrophoresis machine, carbon dioxide incubator, photomicroscope, microwave oven, and refrigerator from the Third World Academy of Science; air conditioner, automatic switch timer and processor, UPS 650 VA, printer, top loading balance, hand blower/vacuum cleaner, bench top pH meter, single channel pipettor, 17" monitor, and keyboard with scroll mouse from PhilRootcrops funds.

ITE - 1 unit Ruttner water sampler from Karl Strenger Foundation, 2 units compound microscope, 5 new and 5 old binocular from EURONATUR, and dozens of assorted laboratory glasswares and accessories from Hirschmann Laborgerate GmbH & Co.



(Left) Dr. Belita A. Vega accepting the books donated by Dr. Heinz Bongartz of Friedrich Ebert Stiftung; and (right) the luttner water sampler acquired by ITE.





LSU carried out its extension activities with unflagging zeal despite the 30% reduction of its budget. It strengthened linkages and drew the support and cooperation of LGUs and NGOs towards the accomplishment of extension targets.

Technology Promotion

Forestry Info Kit

The *ACIAR Smallholder Forestry Info Kit*, an information material for smallholder tree farmers produced by the ACIAR Smallholder Forestry Project, was formally registered with the National Library as extension material of the College of Forestry

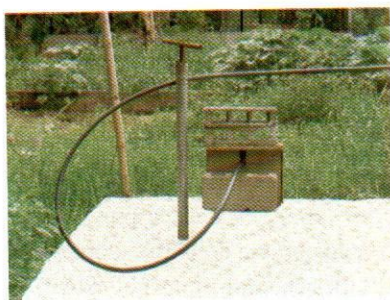
Distribution of Planting Materials

As part of their extension services, the following units of the academe produced and distributed planting materials like cuttings, seedlings, seeds, etc. for free or at minimal cost to the different clientele: PhilRootcrops - over 2,000 gabi setts, 300 kgs of ubi, 105,950 sweetpotato cuttings, and 2,000 cassava cuttings; NCRC-V - 420 makapuno seedlings, 50 seednuts, and 6,707 coconut seedlings; NARC - 1,000 seedpieces and 2,070 abaca tissue-cultured plantlets; ITE - 825 seedlings of different trees; DASS - 576.5 kg ordinary lowland rice, 104 kg glutinous lowland rice, 92 kg corn (UPL Var 1 and VM #2), 126.5 kg mungbean, 8 kg sweet corn, and 1 kg soybean; DOH - 23.86 kg vegetable seeds, 738 grafted fruit trees, 120 marcotted fruit trees, and 107 seedlings of fruits trees.

Distribution of Communication Materials

Leaflets, technoguides, pamphlets, brochures were produced and distributed to farmers and other

clientele for free or at cost by the following departments, institutes, centers of LSU: FARMi 25 copies of System of Rice Intensification (SRI) guide; ISRDS - 4 issues of R&D Datafiles and 2 sets of Training Modules for Gender Mainstreaming; PhilRootcrops - 240 technoguides on rootcrops; ITE - 500 copies of Nature Trek; NARC - 60 copies of the Cebuano version of the brochure on Abaca Production and Stripping, English version leaflets/flyers on Disease Identification - 50, Abaca Harvesting & Processing into Fiber - 15, Operation Manual of Stripping Machine - 15, Abaca Technologies - 60, RDE on Abaca - 100, and 2003 Abaca RDE Accomplishments - 20; NCRC-V - 190 copies of leaflets and brochures on Makapuno Genotypes - 40, Cultural Management Practices of Coconut - 50, Ginger Production Under Coconut - 50, Banana Production Under Coconut - 50; RETD-OVPRE - several copies of technoguides on Rambutan Production, Durian Production, Lanzones Production, Mangosteen Production, Corn-Cassava Intercropping; DASS - Cebuano version of leaflets on Rice Production - 76, Corn Production - 67, Mongo Production - 67, Peanut Production - 30, Soybean Production - 17, and Soil Sampling - 29; DOH - brochures on ornamentals - 285 copies, vegetables - 230 copies, fruits - 150 copies, plantation crop - 30 copies, and Bioorganic Fertilizer Production - 100 copies; DDC - several copies of the Cebuano version of Broccoli/



The biogas digester of the Department of Animal Science.

Cauliflower/Cabbage/Lettuce Production and Sorjan Farming and English version of Off-season Production of Vegetables Using Plastic Mulching, Off-season Tomato Production Through Grafting Technique, and Protected Cultivation of Vegetable Crops.

Techno Demofarm/Projects/ Showcase

The Department of Animal Science (DAS) started setting up a biogas digester as showcase to farmers and other visitors.

PhilRootcrops established a 1,000 sq.m. Yam Demo Farm at Brgy. Pangasugan, Baybay, Leyte to showcase the proper cultural management practices of ubi. Moreover, the cassava-based feedmill formerly managed by DAS was transferred to PhilRootcrops.

Fabrication of Processing Machines

NARC fabricated and distributed 11 units of portable stripping machines, 1 set abaca pulping machine with dryer, and 1 set abaca twisting/ twining machine to farmer cooperatives, abaca farmers, and businessmen.

Abaca Disease Management & Rehabilitation Task Force (ADMARTF)

A task force composed of LGUs, NARC, FIDA-8, OPA, and ATI was created to oversee and lead the campaign to eradicate abaca diseases.

Exhibits

To showcase its technologies, the LSU Main Campus maintained the Campus Stationary Exhibits at the RDE Building and put up exhibits during the LSU Anniversary. The LSU-based NCRC-V and PhilRootcrops set up exhibits in Tacloban City; Intramuros, Manila; and Cagayan de Oro City.

Technical Services/ Consultations

Various forms of technical support were provided by the different units of the University to their respective clientele, as follows:

College of Forestry - local government units of Inopacan and Isabel in Leyte; clientele of the Leyte Island Program, a community-based natural resources management project of the Provincial Government of Leyte; and farmers - through consultation and technical support in the field of forestry and environment.

Department of Computer Science and Technology (DCST) - helped the LSU administration in setting up the local area network (LAN) during the enrolment period, developed a database for the LSU Alumni Directory, and extended consultancy services to the ViSCA Foundation Elementary School (VFES) in the development of its Teaching Performance Evaluation System.

Department of Economics (DOE) - provided expert services to other units within the university and other agencies like the Department of Agriculture (DA) and Department of Environment and Natural Resources (DENR), and assisted in the proposal development of two projects, namely: *coco-wine* and *Citronella*.

Department of Agricultural Engineering (DAE) - technical assistance to biogas adaptors in Leyte and Southern Leyte.

Department of Horticulture (DOH) - 19 visits and technical assistance to 17 farm owners in the different municipalities of Leyte on orchard and vegetable farm establishment and cultural management and setting up of bio-organic fertilizer (BOF) production project.

Department of Family & Consumer Sciences (DFCS) - MTAC/BC/BNS/BNC/MNC members in the municipalities of Baybay, Hilongos, Matalom, and Ormoc City in Leyte on nutrition and BIDANI-related concerns.

Institute for Strategic Research and Development Studies (ISRDS) - SOBA, VIMCON and ELAC, on environmental advocacy and preparations for the strategic planning and evaluation of SOBA and ELAC; and MES-CENVIARC researcher, on data analysis and interpretation of results.

Institute of Tropical Ecology (ITE) - fisherfolks of Barangay Higuluan in Baybay, Leyte and Barangay Damulaan in Albuera, Leyte, on aquaculture.

Farm and Resource Management Institute (FARMI) - technical support to the following projects/NGOs: Sustainable Agriculture Project of St. Benedict Farmers Institute (Alangalang, Leyte), Rural Development Institute (Ormoc City), Community Services for Employment & Development (Tacloban City), Livestock & Livelihood Project of PCC & CIAT, Tree Domestication Project of ICRAF, and Community-Based Participatory Action Research (CPAR) Project of DA-BAR; technical information on fruit crop establishment and maintenance; technical assistance in conducting Participatory Technology Development (PTD) and technology promotion with local farmer groups or *alayons*; assisted in the milk yield improvement of Mura Buffalo through Participatory Action Research on the appropriate feeding practices for milking carabaos.

National Coconut Research Center-Visayas (NCRC) - groups of farmers, on improving coconut farm productivity, copra processing and

utilization, and coconut plantation establishment.

PhilRootcrops - Lopez Jaena LGU in Misamis Occidental, on fabrication of root crop processing machines for ubi powder processing (washer, steamer, dryer, mill); Philippine Australia Local Sustainability (PALS), on ubi production and processing areas in Misamis Occidental; Bali Farms and Crops Research Center (BFCRC) in Cagayan de Oro City, hands-on training on ubi tissue culture; Triple A Plantech Enterprises in San Pedro, Laguna; Municipality of Inopacan, Leyte for the control of yam anthracnose in the area; Mayor of Hilongos, Leyte & DA staff and Congressman of Lanao del Sur and his staff, on mass production of cassava in their respective areas; and Tudela Multi-Purpose Cooperative (TMPC), on their feedmill operation.

Multi-Media Development Center - assistance to development communication students in the production of their developmental dramas and radio documentaries; and facilitated the production of instructional materials and video presentations.

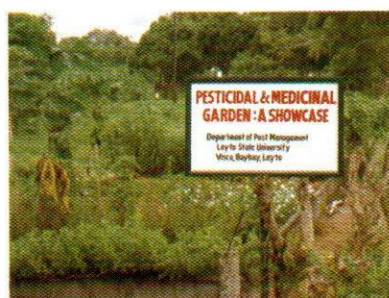
LSU-Isabel Campus - presented the BIDANI Strategy to the Sangguniang Bayan and municipal officials of Isabel, Leyte which led to the enactment of Municipal Resolution No. 2004-114A establishing a mandatory annual appropriation of P60,000.00 in the Municipal Annual Budget and P2,000.00 in the annual budgets of the different barangays of Isabel, Leyte starting 2005 for the implementation of the BIDANI program in the municipality.

Community Outreach Projects

LSU-Alangalang Campus - conducted vaccination of animals in the nearby barangays and participated in the clean and green project of the Alangalang LGU.

Farmers mapping community resources under the Community Based Participatory Action Research (CPAR) project.





Skills training on functional literacy (top) and mothers' classes in nutrition education (middle) at LSU Isabel Campus; and the Pesticidal & Medicinal Garden of the Department of Pest Management as an extension resource of the University (bottom).

LSU-Villaba Campus - distributed vegetable seedlings to interested farmers.

Training

The Institute of Human Kinetics (IHK) sponsored a National Seminar-Workshop on Scientific Coaching and Training on July 23-25, 2004 at the LSU Gymnasium to promote effective coaching and training of athletes among coaches and PE instructors/professors from the different private and public high schools and colleges and universities in the region.

The LSU-Villaba Campus conducted skills training to augment the income of their beneficiaries, functional literacy classes to adult illiterates, and mothers' classes in nutrition education.

The different departments, colleges, and centers conducted trainings, seminars, workshops, briefings for their respective clientele (Table 8).

Highlights of Extension Projects

Pesticidal and Medicinal Garden - A Showcase. Collection, planting/repotting and maintenance of the pesticidal and medicinal plants were continued. A total of 39 species of biologically active plants were collected and planted and 18 species were potted for display at the new site.

Laboratory Analysis of Soil and Plant Samples. The Soil Research, Testing and Plant Analysis Laboratory of DASS analyzed 286 soil samples, 72 plant samples, 10 organic materials and 1 water sample submitted by students, researchers, farmers, private firms and individuals, and non-government organizations.

Establishment of a Processing Line for Rootcrop-based Food Products at BPC Cooperative in Bubon, Baybay, Leyte. The project aimed to improve the processing of rootcrop-based food products especially cassava chippy and drying of the different products. It designed and fabricated a multi-purpose rootcrop processor and a biomass-fuel stove and food dryer which enabled the cooperative members to dry their products even during rainy season using coconut husk as fuel.

Museum of Natural History. The Museum serves both the instruction and extension functions of the Department of Pest Management (DPM). Cost of the maintenance of live specimens as well as supplies and materials needed in its operation is taken from the entrance fees of visitors which are deposited in the account of the museum. During the year, the museum had 7,731 visitors who were mostly students, teachers, farmers, and trainees from various schools, colleges, universities, and LGUs of Regions 7 and 8.

Pest Clinic. The pest clinic became an avenue for interaction between the DPM staff and the farmers and other clientele through pest diagnosis, field visits, and lectures/briefings. During the year, 19 plant samples infested with pathogenic microorganisms and insects were examined and 3 fields were visited. Clients were given instruction on how to control the identified pests to prevent further damage of their crops. Fifteen (15) pest clinic bulletins describing some important pests and their control were produced.

Kontra Alcoheres. Several abaca growing barangays of Baybay, Mahaplag, and Inopacan in Leyte and some areas in Southern Leyte were visited to monitor the possible infestation of abaca bunchy-top, a

Table 8. Trainings conducted/services rendered by departments/centers, CY 2004.

DEPT/CENTER	TITLE OF TRAINING	TYPE OF CLIENTELE	NUMBER OF PARTICIPANTS
PhilRootcrops	Cassava and sweetpotato production; cassava grates processing; rootcrop production, processing and utilization; briefing on rootcrop technologies	Farmers, housewives, LGU staff, processors, entrepreneurs, NGO, PO, students, staff of CARE Phil, scientists	750
National Abaca Research Center	Abaca production; disease management of abaca; rainforestation farming; sustainable abaca production; abaca waste utilization; shoot tip culture of abaca; tissue culture techniques; information drive on bunchy-top disease management; operation & maintenance of portable abaca spindle stripping machine, twisting & twining machine, portable abaca pulper and dryer; forum on the gathering of umbak & mandatory treatment of infected abaca plants; introduction to resource & environmental economics	Abaca farmers, housewives, OSY, Lab technicians, LGU-Baybay/Inopacan/Hilongos, Samar DOST staff, coop members, MS students from Germany, agriculturists, potential abaca farmers, ELAC personnel, LSU faculty & staff	596
National Coconut Research Center - Visayas	Coconut shell charcoal making; briefings/orientation on the developed technologies	Farmers, students, instructors, government employees, LGU officials, private individuals, SCFO provincial officers	509
Farm and Resource Management Institute	Season-long mango production; environmental conflict management; tropical PRA on livestock production system; PRA on vegetable/livestock production; FGD on dairy-buffalo production system and coconut-based production; forage establishment and maintenance; system of rice intensification (SRI) workshop; FGD on coconut-based/dairy buffalo production; forage establishment & maintenance; vetiver grass technology orientation; sustainable natural resource management (NRM); agro-ecology; RDI data management; SRI farmer cooperators' forum; field-based course on NRM	Farmers, researchers, MAOs, technicians, LGUs, POs, dairy buffalo beneficiaries, LSU staff & students, NGOs, POs, private firms, researchers	770
Institute of Tropical Ecology	Small business management; food processing training; candle making; open water SCUBA diving; cross visits on rainforestation farming; 6 th annual YEC; nature trek; nature camp; environmental education; environmental forum; sustainable abaca production & rainforestation farming	Women's association, MS & college students, barangay youths, municipal & barangay officials, Haribon clientele, DENR officials, VFES pupils, BCBP Father & Son, ILC delegates, LSULHS students, Transmontes mountaineering club, BNHS teachers & students, elem. pupils	2,535

DEPT/CENTER	TITLE OF TRAINING	TYPE OF CLIENTELE	NUMBER OF PARTICIPANTS
Institute for Strategic Research and Development Studies	Recent trends in ornamental gardening and entrepreneurship for sustainable livelihood; site visitation to ornamental gardens in Caridad, Albueria, Leyte; bamboo craft making; fashion jewelry production; instructional managers' training; field interviewing technique; skills for life training to OSYs	Local gardeners of Patag, Guadalupe, & Pangasugan, Baybay, Leyte; OSY, DepEd NFE coordinators, IMs, Barangay Health Workers (BHW)	155
Institute of Human Kinetics	National Training Workshop on Scientific Training & Coaching; modern dance lessons for faculty and staff; ballet class; ABC's of proper nutrition & diet	Coaches, PE teachers, athletes, PEHM majors, LSU faculty and staff, children	164
Multi-Media Development Center	Integrating hygiene messages into the classroom activities; facilitators workshop for the project learning tree & project water education; environmental education; film/video showing as part of classroom activities; class reporting using OHP/ computer with PowerPoint presentations; designing PowerPoint presentations; assisted during oral defense of undergraduate thesis & presentations of finalists to the Outstanding Undergraduate Thesis Award and during lecture on scriptwriting, hosting and news reporting seminars/ trainings/workshops/council meeting/convention	Elementary school teachers from San Ricardo & Pintuyan, Southern Leyte; teachers & trainers from LSU, Bohol, Leyte and Negros; students; faculty/staff	2,096
College of Education	Preparing novice teachers for the challenges ahead; job seeking seminar; Project Learning Tree and Water Education for Teachers	Senior students, student teachers	816
LSU Laboratory High School	Syllabus preparation; training of student teachers	Student teachers & observers	
Dept of Agron. & Soil Science	Seminar on soil analysis; chemical safety for laboratory workers; watershed characterization	LIT students, LSU students, faculty and staff, UP, CENRO, PENRO	192
Dept. of Animal Science	Hog raising, duck production & enterprise development, seminar/updates on livestock and poultry management, native chicken producers training, training needs assessment, visitors' briefing on animal production	Farmers, DA technicians, MAO staff, hog growers, extension workers, PASAR employees	294
Department of Family and Consumer Sciences/ BIDANI	Participatory domiciliary nutrition rehabilitation (PDNR); PDNR reinforcement; Barangay Management Information System (BMIS); Technical backstopping during MTAC/sectoral strategic meeting/planning workshop/use of BIDANI manual of operation; barangay development planning and management workshop; Municipal Nutrition Council meeting; mothers' classes/meeting; maternal care and breast feeding; Search for Buntis Star; complementary feeding; Nutri Quiz; production and designing of bamboo fans; facilitated the repair of corn mill, delivery of Nutripak to RHU Hindang, provided sample of Nutripak to SB members, Nutripak Production Project.	LGUs, Barangay Nutrition Scholar, midwives, mothers, association of barangay secretaries, brgy. captains, Barangay Council, key administrators, extension staff	3,879

DEPT/CENTER	TITLE OF TRAINING	TYPE OF CLIENTELE	NUMBER OF PARTICIPANTS
Department of Horticulture	Mango flower induction, fruit production and post harvest management; ornamental production and management; organic vegetable production; vegetable production & bioorganic fertilizer production; nursery management and asexual propagation; nursery and fruit crop establishment; enhancement of community-based natural resources in Cienda Watershed	Technicians, youth, farmers, students, government employees	600
Department of Economics	Preparation of financial analysis	LSU faculty & staff	
Department of Business Management	Identification of enterprise strength, weaknesses, opportunities & threats; business operational strategies; business, expense, saving management game for students; recent trends in ornamental gardening and entrepreneurship for sustainable livelihood for ISR extension projects; entrepreneurial planning, budgeting record keeping; pineapple processing & preservation; consultation on feasibility study preparation; feasibility study on hog and broiler production; consultation of marketing studies; mango processing; economics of corn production	Farmer processors, farmers, rural women, members of association, BSAB majors, rural women, ATS from Biliran Province	350
Department of Computer Science and Technology	Computer operation of Windows, MS Word and Excel; Class Records Management System (ClARMS)	Faculty of Tolosa Campus & CEAI	30
Department of Food Science & Technology	Peanut processing; descriptive panel; unoptimized procedure on roasted peanut and peanut butter; peanut product processing; livelihood summit; pineapple/sweetpotato processing; ubi pastillas and kabkab processing; mango/ubi processing; recycling & utilization of waste products of jackfruit; GMP, HACCP & SSOP training; scientific research planning & manuscript preparation; basic experimental design & statistical analysis	Farmers, housewives, HSS students and teachers, HISUMCO employees, some LSU staff	1,075
College of Forestry	Job seeking seminar, SPSS training for ACIAR smallholder forestry project, characterization of flora and fauna, farmers' training on agroforestry systems, ACIAR smallholder forestry end-of-project workshop	Senior forestry students, ACIAR researchers, LGUs, POs, NGOs, DENR, DAR, Rural Bank, farmers	141
Dept. of Pure & Applied Chem.	Environmental Chem demo; managing broken glasswares in the Lab; care and feeding of pH meters	LSU faculty, research staff students	195
Isabel Campus	Welding, mango production	OSY, farmers	70
Villaba Campus	Swine castration, iron supplementation, vaccination, basic literacy, livelihood skills training, nutrition education, nursery management	Housewives, adult illiterate, mothers, farmers	99

dreaded disease of abaca. During the series of information drive, abaca farmers and local government officials were informed of the danger and damage of the disease to the crop and to the abaca industry as a whole; and demonstrations on how to control the disease were carried out. During the year, 43 field visits and 24 meetings with the farmers and local officials were made.

In barangays where the disease was already present, immediate eradication of the plants was recommended and this earned the support of the municipal officials of Baybay who enforced strict implementation of the quarantine regulation and limit on the gathering of abaca leafsheath which is perceived as one of the causes of the spread of the disease to other areas.

Reaching Out Rootcrop Farmers Through the Multimedia Materials.

The project realized the development of a story board, auditions for the two audio narrations, compilations of pictures, and creation of graphics for the PhilRootcrops story. It also finished the English and Cebuano versions of the updated technoguides on cassava, taro and yam which were programmed in Flash MX and Dreamweaver 2004. Several card indexes on varietal information of cassava - 24, sweetpotato-26, gabi-8, ubi - 6, and tugui - 5 were established.

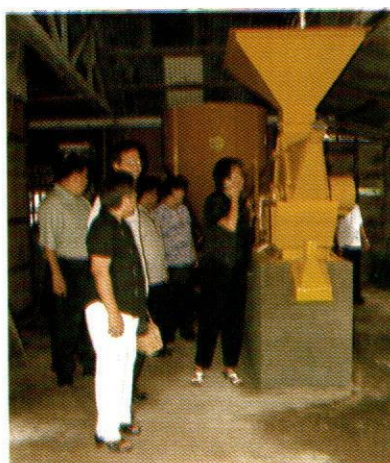
Cassava-Based Feedmill. The site, management, and operation of the cassava-based feedmill was transferred from the Department of Animal Science (DAS) to the PhilRootcrops. PhilRootcrops sold feeds to in-house customers like DAS and PCC. A 0.75 hectare corn-cassava relay buffer farm was established as source of raw materials for the feedmill.

Environmental Education. The Institute of Tropical Ecology continued to organize and conduct campaigns to promote environmental awareness and conservation through lectures, environmental quiz shows, poster making contest, nature trekking, and video showing. Environmental education modules were also prepared.

University Wellness Programs/ Summer Recreation Program. The Institute of Human Kinetics (IHK) spearheaded a lecture on *The ABC's of Proper Nutrition and Diet* for the faculty and staff of the university and introduced the Pinoy Aerobic Workout to keep them physically fit and more productive in their workplace. The organizers of the IHK Summer Recreation Program held a ballet class for 12 children with Ms. Karen Hansen, a US Peace Corps volunteer, as the ballet teacher. Other activities included Trail Running Competition, Nature Trekking, and Modern Dance Lessons for the faculty and staff.

Participatory Technology Development (PTD) of LSU-Generated Technologies. Meetings were held with farmers of Matalom, Leyte to review the individual farm plans of the upland demo farms; and with the ICRAF and FARMI staff and RDI director to discuss the activities of the Conservation Farming Village project. Farmers of the municipalities of Babatngon and Burauen under the Rural Development Projects of the People's Movement for Empowerment and Development (P-MEND) were given an orientation on the Matalom project. Various forms of assistance were given to the following clientele: Community-Based PAR project of the Office of Provincial Agriculture-Leyte; Rural Development Projects of the People's Movement for Empowerment and

The Feedmill (that produces cassava-based feeds) under the new management of PhilRootcrops.



Development (P-MEND), Tacloban City; LGU of Jabonga, Agusan del Sur (in the conduct of cross visit of its farmers and officials to Matalom Upland Development Project and other projects of LSU); Rural Development Institute, Ormoc City (on the planning and conduct of projects; and milk yield improvement of Mura Buffalo through Participatory Action Research (PAR) on the appropriate feeding practices for milking carabaos).

Strengthening Partnership with NGOs, LGUs, and POs for Rural Development. Coordination with the Project Development Institute (PDI) was made in the conduct of *Roundtable Discussion on Development Needs, Issues and Prospects in Leyte Provinces and Biliran* and with the Tambuyog Development Center and CENTROP in Siliman University in the conduct and documentation of the *2nd Roundtable Discussion on Water Tenure*. Other activities carried out under this project were: initial arrangement to facilitate the request of the local chief executive of Salcedo for a Training on Basic Water Rights for Barangay LGUs in Salcedo, Eastern Samar; development planning workshops among the barangay-level watershed management entities of the Salcedo watershed; and technical assistance to SOBA, VIMCON and ELAC on environmental advocacy and Human Resources Development Program.

Integrated Coconut Technology Delivery System for the Visayas. In cooperation with the different local government units and other centers of LSU, NCRC-V participated in 7 off-campus exhibits during the year to showcase and create public awareness on useful coconut technologies. Reading materials on the production and management of the different coconut varieties

(tall, dwarf, hybrids), makapuno technology, annual and perennial crops suitable as intercrops, low-cost charcoal making technology, and production of high value crops using the semi-direct and indirect types of copra dryers were produced and distributed to coconut farmers, development/extension workers, students, entrepreneurs, instructors, and other interested persons. Moreover, trainings and briefings on coconut production, processing and utilization were conducted for farmers and visitors.

Mobile Technical Assistance on Coconut Technologies. Several farmers were given assistance on coconut plantation establishment including variety selection and copra processing using the semi-direct type of copra dryer. One farm in Hilongos, Leyte was visited and assessed for suitability of intercropping system and which the team advised to have pineapple as an intercrop under coconut. A coconut seedgarden in Calubian, Leyte was likewise assessed and the team found that the palms were already bearing fruits, thus recommended that production of hybrid nuts should be done later when the palms are already well-established. They also recommended the application of fertilizers to the palms and to free the plants of cogon weeds.

Collaboration

LSU strengthened existing linkages and established new collaborations with the following institutions:

Bali Farms and Crops Research Center (BFCRC) - utilize the tissue culture technology for purple yam.

Eastern Samar Provincial Agrarian Reform Office (ESPARO) - micropropagation of tissue-cultured banana plants.

NCRC-V staff members - Dr. Eutiquio Sudaria and Prof. Mario Baliad, assessing a coconut seedgarden in Calubian, Leyte.





Office of the President

The **Office of the President (OP)** systematized the overall program operation of the University for efficient use of budget, manpower, and other resources.

1. The following offices under the **Assistant to the President for Corporate Planning and Income Generation (APCPIG)** carried out their respective functions and responsibilities:

a. The **Planning Office**, in coordination with other offices, consolidated and published the 2003 Annual Report of LSU; prepared the proceedings of the 2nd Phase Strategic Planning Workshop; updated the Faculty and Student Profiles; consolidated the 2004 Mid-Year Report of the different colleges and units of the University; and provided assistance to various University committees.

b. The **Internal Control Unit (ICU)** complied with the requirements of the Department of Budget and Management (DBM) for the establishment of the organization and proposed staffing, as well as workload per position of the Internal Auditing Unit of LSU; conducted audit work on ACIAR funds managed by the ViSCA Foundation for Agricultural and Rural Development (ViFARD), financial documents of the Socio-Cultural Affairs Committee (SCAC), and operation audit of the Physical Plant Office (PPO); submitted audit report of the VEFI Bookstore operations from June 1990 to August 2003; witnessed the semi-annual inventory of supplies and materials, breeding animals and other farm products of income generating

projects (IGP), as well as the items kept by the Property Office; witnessed public bidding of computer, electrical, construction and office supplies; witnessed the disposal of waste materials and public auction sale of unserviceable properties/materials at the LSU Main and Isabel campuses; reviewed monthly reports of income generating projects, summary of awards to abstracts of bid proposals, contracts of contractual employees, notice of step increments, and leave records of personnel to ensure accurate individual leave records; and opened sealed canvass papers for supplies and materials.

c. The **Income Generating Projects Office (IGP)** monitored the LSU-Main Campus income generating projects and recorded a total income of P10,910,729, (P8.28M from 6 RF projects and P2.63M from 30 non-RF projects) which is 16.68% higher than the CY 2003 income. The four top earners were the Pavilion and Guest House - P4.31M, Coconut - P1.95M, Hostel - P1.36M, and Printing Press - P0.46M (Table 9). The Office continued to provide the different project managers with a simplified format for the preparation of the CY 2004 and CY 2005 plans and programs; completed the concreting of the circumferential road at the LSU Market; and built drainage systems, repaired leaking roof and non-

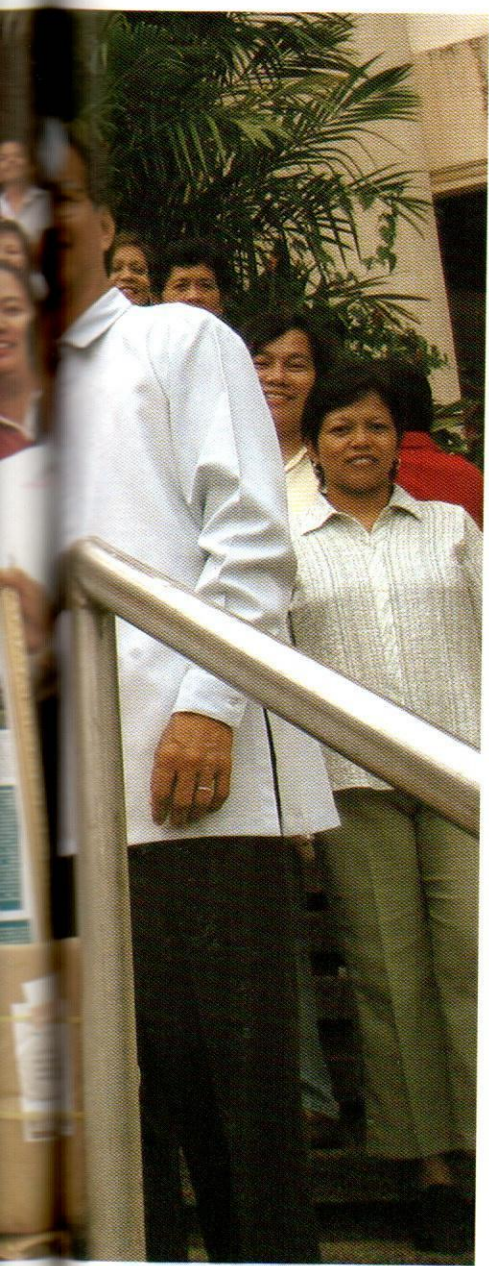


Table 9. Income of projects monitored by the IGP Office (2002-2004).

PROJECTS	2002*	2003*	2004**
A.1 RF-IGP			
Pavilion	3,349,682.45	3,111,368.45	4,318,955.76
Hostel	1,036,043.98	1,050,606.00	1,423,629.70
Printing Press	699,323.20	482,287.94	486,831.21
Coconut & Others	625,935.80	2,272,827.94	1,925,087.37
Coco Buko & Seedlings	-	51,759.00	Merged to Coconut & Others
Rice	274,108.50	180,373.50	114,375.00
SUB-TOTAL	P 5,985,093.93	P 7,149,222.83	P 8,268,879.04
A.2 Non-RF IGP			
LSU Market	444,732.86	396,423.27	418,126.95
Manila Lodging	170,780.00	193,405.00	156,020.00
Ornamentals	126,445.28	147,194.00	133,583.10
Cebu Lodging	111,040.00	114,030.00	109,675.00
Bindery	96,379.05	100,807.20	119,116.00
Infirmery	92,083.00	105,118.00	189,779.48
Rootcrops	94,154.24	118,880.72	271,818.50
Convention Center	78,688.90	122,709.00	158,649.00
DASS (Soil Lab.)	61,081.30	89,784.00	96,162.35
Beef/Carabeef	58,404.00	52,347.50	194,017.50
Horti Nursery	54,042.00	56,426.00	49,979.00
Recreation Center	52,438.25	56,571.50	40,873.00
Corn Seeds	46,915.00	60,925.00	17,000.00
Library Fines	32,295.50	23,910.50	36,570.00
Goat/Sheep	7,980.00	300.00	20,500.00
Locally Grown Production	31,914.00	35,109.75	52,679.00
Makapuno	27,520.00	95,679.40	198,471.90
SDMU	22,926.20	26,519.20	71,135.00
PPO Shops	20,357.00	35,410.00	20,886.30
Xerox/Handbooks	14,279.75	11,942.00	14,670.00
Coconut Food	10,448.00	4,211.00	14,532.00
Vegetable Seedbank A	9,181.00	No income	No income
FARMI Demo Farm	7,501.00	22,504.22	20,624.18
High School Fines	6,507.50	6,357.05	7,121.00
Coco Techno Training	1,777.00	11,802.00	6,214.50
LSU Guest House	-	307,399.00	Merged to Pavilion
Coco Intercrops	6,269.40	6,075.00	5,575.00
Security Services			124,450.00
Sustained Yield			4,725.00
Layser			14,866.00
Duck/Poultry	-	-	1,000.00
Feedmill	-	-	37,950.02
SUB-TOTAL	P 1,686,140.23	P 2,201,840.31	2,606,769.78
GRAND TOTAL	P 7,671,234.16	P 9,351,063.14	P 10,875,648.82

* Cash sales and credits sales

** Cash sales only

functional ceiling fans, lights and other fixtures of the Fast Food Center and LSU Market; and facilitated the collection of rentals and recommended non-renewal of contract of some delinquent concessionaires.

The **Guest House and Pavilion** constructed a laundry area between the Learning Center and Governor's Cottage; placed signboards at different strategic places; facilitated the repair of kitchen roofing and Pavilion comfort rooms as well as the cementing of the pathway from the main road to the Pavilion kitchen. It generated a gross income of P4,306,003.50 from catering services and lodging.

The **Hostel** constructed the body shop, 2 units kiosk and swing between the Hostel & ATI Dorm, Ferner stand, clotheslines, and divider at the stock room; landscaped the area between Hostel and ATI building; facilitated the repair of gutter, roof, electrical wirings, water system, and lavatory in the coffee shop; installed hot and cold water system in the suite rooms; constructed a garden shed and flower/ornamental stand, and a mini-fence at the pool and lobby area; and fabricated a trash-table. Its services cashed in a P 1,362,695.14 gross income.

2. The **Office of the University Secretary** (OUS) facilitated and took minutes of 4 Board of Regents, 6 University Administrative Council, and 3 University Academic Council meetings.

a. The **Information Office**, in its conscious effort to promote LSU's programs, services, activities, and agricultural technologies to other parts of the country, published LSU in one of the most popular national

dailies - the Manila Bulletin, in its November 23, 2004 issue. The office likewise published 50 issues of the LSU Obelisk, the official weekly publication of the University, and distributed them to the LSU constituents, other SCUs, and partner institutions within the country and abroad. Furthermore, it submitted LSU press releases and advertisements to local and national publications, attended to 99 campus visit requests and tour-guided over 6,000 visitors, revised the LSU leaflet for distribution to visitors, edited the LSU Annual Report, assisted in the preparation of documents/reports required by government agencies/offices and other institutions, facilitated the collection of campus maintenance fee to augment the University's budget for campus sanitation and upkeep, provided assistance in the preparation of programs/souvenir programs of LSU, and promptly accomplished the assignments/requests of the University President's Office.

3. The **Alumni & Community Relations Office** (ACRO) conducted the following seminar series with some alumni as resource speakers - *Information Technology Risk Management* (Engr. Vicente Fornolles), *How to Invest in the Stock Market* (Engr. Vicente Fornolles), and *Systems Engineering and Project Management* (Engr. Gemma Cañeda-Herrera). It also facilitated the reunion of Batch '85 on February 3-4, 2004, renovation of the Frog Fountain Landmarks, and data base registration of alumni; conducted the *ACRO Strategic Planning Workshop* at Da-o, Davao, Bohol on January 3-6, 2004 which led to the definition of the ACRO mission, vision and goals as well as the key change signals for the improvement of its operation, success indicators



LSU alumni pose at the freshly renovated Frog Fountain.

and breakthroughs; conducted a training (in coordination with the Department of Development Communication) on *News and Feature Writing* for the alumni communicators; produced two issues of the Alumni Notes (official publication of ACRO); and gave Certificates of Appreciation to various alumni donors during the Alumni Night on August 9, 2004.

4. The **University Review Center** (URC) organized review classes for prospective examinees in board examinations for agriculturists, foresters, teachers, and veterinarians. It developed and produced brochures for the University Review Center and review materials for agriculturists, foresters, teachers, and veterinarians licensure examination which were distributed to various schools and during conferences in the university and in Davao and posted in strategic places in the university main campus as well as in the LSU satellite campuses. It acquired 4 copies of review materials for agriculturists from CLSU and UPLB, started the production of review materials for agriculturists for 2005, and submitted a complete set of

review materials for Agriculturists Licensure Examination to the Board of Agriculture Examiner. It obtained a gross income of P780,444.00 from the four review classes.

5. The **Legal Office** facilitated the termination of Adhoc Committee investigation of administrative cases and grievance complaints, drafted the petition for review of the Notice of Disallowance before the COA Central Office, prepared comments to appeal memorandum before the Civil Service Commission and to the petition for issuance of TRO; prepared comments to COA AOM on the giving of clearance and payment of retirement gratuity; terminated the formal investigation of administrative cases against LSU personnel and recommended penalties for the offense committed; and facilitated the issuance of a formal charge against one personnel for the offense of malversation of public funds and misconduct, as well as settlement of the problem on squatters in an agricultural lot of LSU.

6. The **LSU Security Services** secured the properties of LSU and its constituents, saw to it that campus peace and order violators were meted out appropriate punishment/penalty, facilitated the repair of service jeep, installed jalousies and face-lifted the Guard Posts No. 1 and 2, recovered stolen items and returned them to their owners, provided tight security measures during major activities of the university, installed road block in the highway along the university campus to minimize vehicular accidents, disallowed public utility motorcycle drivers from entering the campus bringing their passengers, and invited a man to a dialogue for constructing a house near the LSU rice field without asking permission from the school authorities.

Office of the Vice President for Academic Affairs (OVPAAs)

The Office of the Vice President for Academic Affairs (OVPAAs) monitored the student enrolment of the university; acted on students' requests for special offering of subjects and course overload; and monitored disbursement of funds which had been accorded by the Commission on Higher Education to the University for having earned the distinction as Center of Excellence (CHED-COE) in Agriculture, Forestry and Agricultural Engineering. OVPAAs also supervised the workload distribution of regular faculty and part-timers; facilitated the conduct of the seminars on "Teaching as a Vocation;" and "Leadership and Management in Colleges and Universities" and "Mentoring for Academic Succession and Effective Decision Making" with Dr. Onofre R. Pagsanghan and Dr. Fernando A. Bernardo as the resource speakers, respectively.

1. The **Graduate School** conducted a seminar-workshop on thesis/dissertation outline and manuscript preparation for LSU graduate students; gathered and prepared documents for the 3rd Level AACCUP Accreditation and underwent Local AACCUP Evaluation for the MS and M.Ag.Dev programs; prepared and submitted the Program Performance Profile for AACCUP Accreditation; printed and distributed Vol. 3 and 4 of the Science and Humanities Journal; revised and printed the LSU Graduate School Code and the Graduate School Information Bulletin; reproduced and bound 104 copies of 15 study guides; and produced the Graduate Research Abstracts (Volume 4 & 5, 2004).

2. The **Office of the Curriculum and Instructional Materials Development** (OCIMD) reviewed the new and revised curricular offerings of the different units for endorsement to the University Academic Council; reviewed individual faculty workloads and teaching performance evaluation; and submitted a proposal to standardize fees for the LSU Entrance Examination. The office likewise worked hand in hand with the OVPAAs in various aspects, such as: students' requests for offering of unscheduled subjects, course overload, change of grades,

enrollment, etc.; information drive and entrance scholarship examination in Regions 6, 7, 8 and SOCSARGEN Mindanao Region; designing the faculty and staff development program of the academic departments in both the Main Campus and satellite campuses; and assessment of the instructional programs of the colleges in the whole LSU System vis-à-vis the AACCUP guidelines. It also spearheaded the evaluation of teaching performance; chaired/assisted various University committees; proposed a design for the hood of graduation gowns by degree program for UADCO and BOR approval; proposed to provide incentives to module writers of gender, sexuality and reproductive health (GSRH) program initiated by ISRDS for UADCO approval; prepared proposals to add 4.0 as a final grade of students in the Leyte State University and modify the application procedure and supporting documents of the LSU-Funded Scholarship and Grants-in-Aid; prepared and distributed to all college deans and departments the announcement to all graduating students with lapsed Inc. marks in their grade reports; and reviewed workload distribution of all teaching and non-teaching academic staff.



LSU President Paciencia P. Milan (top) swears in and gives inspiring words to the campus student advisers and guidance facilitators (bottom).

3. The **Office of Student Affairs (OSA)** sponsored the "First Awards Night" as a modification to the traditional "Honors and Awards Convocation" designed to give special tribute to individuals and student organizations for their exemplary co-curricular and extracurricular activities in SY 2003-2004; facilitated the insurance claims of five students who met accidents; conducted orientation on LSU Code of Discipline to new students; investigated, referred and settled three violations of major students, and investigated four student cases. The office recognized 63 student organizations and coordinated 730 student activities; sent student leaders to off-campus seminars, conventions, leadership trainings and competitions; relocated the offices of the student housing, student organization and USSC to a more accessible, decent, and spacious area; and launched the new Recreation Center. It also assisted 317 work-study grantees, facilitated the granting of 56 LSUSELF loans and 5 medical insurance claims, and processed applications for scholarships/grants. Aside from providing housing accommodation to students during the regular semesters and summer, OSA also extended housing services to participants of LSU-held youth camps and conventions as well as reviewees and extramural students.

The **Admissions Office**, with the assistance of 13 faculty/staff from different departments/offices of the University, conducted information campaign in 45 secondary schools in the Visayas and Mindanao; checked the Entrance Scholarship Examination papers and notified 951 examinees from 32 testing centers on the examination results; and processed applications for admission/readmission of 814 new

freshmen, 45 transferees, and 74 returning students for the 1st semester and 27 new freshmen, 19 transferees and 34 returnees for the 2nd semester.

4. The **National Service Training Program Office (NSTPO)** offered the Reserved Officers Training Course (ROTC) and Civic Welfare Training Service (CWTS) to first year college students; coordinated the practicum of CWTS students during the 1st and 2nd semesters in 13 barangays of Baybay and led them to accomplish the following tasks: barangay profiling, beautification, construction of flood dikes, tree planting, solid waste management education, health and nutrition education, improvement of infrastructures, and sports activities. The LSU-ROTC, in cooperation with the Red Cross-Ormoc City Chapter, initiated a bloodletting undertaking and continued its military drills and ceremonies. NSTPO also enriched the CWTS curriculum with topics on health, sanitation and nutrition, consumer price act, and reproductive health. It likewise continued implementing in its ROTC curriculum the standard Program of Instruction (POI) set by the Headquarters of the Philippine Army. In recognition of its active involvement for the attainment of the goals of the National Voluntary Blood Services Program, NSTPO was accorded a *Sandugo Kabalikat Award* by the Department of Health on August 16, 2004 in Tacloban City.

5. The **Office of the University Registrar (OUR)** identified constraints in the computerization of student records; modified/improved its acquired software *vis-a-vis* the LSU requirement; monitored 3,719 incomplete grades; attended to 15,778 requests for verification of records, deficiencies, and evaluation; evaluated/updated 10,545 checklist/records of students; continued the

implementation of advanced registration of regular students; and generated a gross income of P194,949.75 from its services.

6. The **University Library** staff supplied the documents needed for the AACUP Accreditation for Level III Status of LSU's graduate and agriculture programs; transferred the Reference/Reserve Section to the 2nd floor and the Computer Literature Searching Services, theses collection and Filipiniana books to the 1st floor in order to fully maximize the use of The Essential Electronic Agricultural Library (TEEAL), encyclopedia, and other CD-ROMs; provided library users with three computers solely for internet searching through the EVISNET service provider; continued building up its collection through the funds obtained from LSU's award as CHED-COE in Agriculture,

Agricultural Engineering and Forestry; processed and added into its database 1,301 library materials (both print and non-print), bringing the database entries to a total of 12,934; and published two issues of the *New Acquisitions*, which provides a listing on the newly acquired library materials including accessioned publications, serial titles, theses and dissertations, terminal reports, and fiction books. The Library extended its services to private and state colleges and universities in Regions 7 and 8, faculty and students of satellite campuses, and faculty and students of municipal high schools doing research in agriculture and allied fields. It strove to repair and improve its building, facilities and surroundings to make its resources user friendly.



Internet searching at the University Library through the EVISNET service provider of NEDA 8.

Office of the Vice President for Administration and Finance (OVPAF)

The Office of the Vice President for Administration and Finance (OVPAF) supervised and coordinated activities and programs relative to the management, maintenance, development and utilization of the human, physical, and financial resources of the University both in the main and satellite campuses.

In the year 2004, the office had the following accomplishments: provided management and administrative-related documents needed in the accreditation of the Graduate School and College of Agriculture programs of the University; instituted economy measures and efficient use of University budget; initiated the construction of a side walk in front of the administration building for public safety; facilitated the third revision of the University staff housing guidelines and initiated the implementation of housing-related policies; monitored/evaluated the administrative unit performance and

enforced policies to minimize tardiness among employees; facilitated the issuance of 2004 Community Tax Certificate among the University employees in coordination with the Municipal Treasurer's office; disseminated management, administrative, and financial-related information received from the Civil Service Commission and Department of Budget and Management; facilitated the conduct of information updates on retirement benefits, insurance, and housing loan programs by the Government Service Insurance System personnel to the faculty and staff of the University.

The newly constructed side walk in front of the administration building for public safety.





The newly cemented circumferential service road at the LSU Market.

1. The **Office of the Director of Administration (ODA)** assisted the legal counsel in preparing resolutions and pleadings and helped the LSU-Tolosa Campus carry out the following tasks: conduct of the workshop/training for the revision of its 5-Year Development Plan and computer training for selected faculty and staff; spearheading changes in its management and administrative system through maximum utilization of school facilities and establishment of IGPs and appointing committed personnel as project managers; intensifying staff development by sending faculty to seminars and trainings; acquiring additional computers, office supplies, laboratory chemicals, and monoblock chairs with arm; and repairing dilapidated buildings and classrooms.

a. The **Human Resource Management and Development Office (HRMDO)** facilitated the renewal of appointments of 60 temporary, 123 casual, and 38 contractual employees; change of status of 4 employees from temporary to permanent and 1 lump sum position to plantilla item; recruitment of 10 temporary/permanent, 44 part-time, 20 casual, and 3 contractual employees; promotion of 3 administrative personnel and change of position title of one staff; and coordinated with the Office of Student Affairs examinations for hiring of clerk, security guard and driver positions.

b. The **Cash Division** implemented the Commission on Audit (COA) policy to close the books every end of the month and observe a zero balance policy by adopting the Modified Disbursement Scheme (MDS), the modified computerization program of tellering/issuing official receipts, and the modified OPRAH program to view student ledger, historical account, etc. It also

submitted general reports to offices per account codes, transferred funding allocations to the satellite campuses, promptly remitted University income to the bank, and disbursed 100% of compensations as per released Notices of Cash Allocation (NCA).

c. The **Records Division** disposed of 3.5 cubic meters of valueless records of the LSU Main Campus as approved by the Records Management and Archives Office (RMAO); categorized and filed records ready for reference; preserved and maintained the permanent and vital documents of the University; assisted the satellite campuses in the inventory of their records and advised them on the required retention period of records based on the General Retention Schedule of DECS Dept. Order 13-A.

d. The **Physical Plant Office (PPO)** renovated/converted the DASVM Auxiliary Building into an office for the Department of Animal Science, Head House into a Diagnostic Lab, and screen house into lecture rooms; repaired and repainted the ceilings and partition of the University Library and Accounting Office; repaired the comfort rooms of the LSU Cebu Office, Infirmary counter, ceiling of the DGRP hallways, office doors and partitions of DOE, doors and ceiling of the LSULHS comfort rooms, roof and ceiling of the Bakery, Security Office, and President's Office; repainted the hallway of the College of Agriculture and Oval Stage; treated 7 college buildings with termiticides; completed the construction of the OSA Student Lounge; repaired 2 staff housing units; constructed the dome structure of the Butterfly Garden of the Department of Pest Management; relocated the Lauan Dormitory; concreted Phases I & II of the LSU

Market circumferential service road; concreted shoulders of access road towards Brgy. Guadalupe; resurfaced 2 units of shell court; maintained the water and electric power supply inside the university campus; repaired and maintained the overhead primary and secondary power lines of the lower and upper campuses of the University; attended to 30 requests for sound system services; installed 2 units distribution transformers, 25 KVA and one step up transformers for DYAC transmitter; repaired and maintained the pad-mounted distribution transformers at the upper campus and pole-mounted transformers in the lower campus; cleaned the intake box at the Magdagook and Mefe area and reservoirs in the coconut drier and forestry area; attended to 110 plumbing job requests; prepared the technical plans, bill of materials, and cost estimates of various repairs and construction work; fabricated and repaired office furniture; carried out 2 major and 268 minor repairs of vehicles, and 66 machining and welding jobs of the body/chassis of LSU vehicles; maintained the cleanliness and beautification of campus grounds and roads; and assisted the Bids and Awards Committee in the technical preparation for the construction of the Information and Communication Technology Building.

e. The **Infirmary** served the University constituents and neighboring barangays through health care services such as application of preventive and therapeutic medicine; conducted quarterly inspection of garbage waste disposal and sanitation of 22 student dormitories and 20 food establishments; and served the following number of students, faculty/staff and their dependents, and outsiders through consultation - 3,897:

physical examination - 4,756; immunization - 314; dental services - 2,733; other services - 1,237; and laboratory examination - 1,354. It performed other services like dressing of wounds, BP monitoring, EENT treatment, injection referrals, etc.

f. The **Property Office** spearheaded the designation of Property Custodians in every college and center to ensure maximum utilization of expensive equipment and other resources; conducted bidding of disposable properties; submitted the 2003 Inventory Report in conformity with the New Government Accounting System (NGAS) issued by COA; improved the system of acceptance of procured items and their delivery to the end-users; and conducted a Seminar Workshop on Property and Supply Management; followed-up existing Disposal Committees of satellite campuses and started conducting inventory of equipment and unserviceable items for disposal; helped identify the land to be transferred to the Department of Education (DepEd) of Alangalang, Isabel, Tolosa, and Villaba campuses; conducted spot inspection of all disposable items of satellite campuses and classified them as to the mode of disposal like burying, burning or auction; conducted physical inventory of properties of LSU dormitories, LSU-Cebu Office, and on-leave and retiring personnel.

g. The **LSU-Cebu Office**, aside from its usual facilitative services for the LSU constituents, constructed four (4) new concrete comfort rooms (1 each in the first and second floors and 2 beside the kitchen) and mounted a new pair of gate lights.

h. The **Site Development and Maintenance Unit** (SDMU) served the following job requests: 35 land



Supply & Property Management Seminar initiated by the Property Office.

preparation, 72 hauling, and 5 excavation and leveling of land area; 120 welding, 188 vulcanizing, 23 changing of tires, 3 car washing, and 6 engine tune-up/under chassis check up and repair; 4 repairs of motorcycles and bicycles; 20 battery charging; and 10 lawn mowing; maintained the cleanliness of borders and fences along the highway; maintained the functionality and overall condition of the 5 heavy duty tractors, 2 backhoe, and 1 dump truck.

2. The **LSU-Alangalang Campus** facilitated the appointments of 7 part-time employees and processing of documents of 3 retirees; completed the ceiling construction of the New Library Building and disposal of the 1st batch of unserviceable property of the school; and acquired 38 volumes (18 titles) of books.

3. The **LSU Isabel Campus** linked and coordinated with the local communities on socio-cultural affairs affecting the college; disseminated the course offerings to the graduating high school students of Merida, Isabel and other nearby municipalities; installed electric posts and constructed 2 comfort rooms at its upper campus; institutionalized an inventory system for College properties acquired, maintained, rehabilitated or repaired; acquired additional computer units and books; and changed the ceiling of its administration building and computer room. The IGP of the College earned an income of P380,000.00. As an alternative means to generate more income from its resources, the College leased its bakery and canteen to private concessionaires.

4. The **LSU-Villaba Campus** continued to improve its curricular programs and made them accessible to the rural poor through scholarships and grants as well as affordable

school fees. It developed its faculty and staff by sending them to trainings, seminars, workshops, etc.; and entered into a memorandum of agreement (MOA) with the Leyte Division Office of the Department of Education (DepEd) for the observation/student teaching/apprenticeship of its student teachers in the various cooperating schools within the Division of Leyte.

Strategic Planning Workshop

The LSU key officials carried out the second phase of the Strategic Planning Workshop on January 24, 2004 to continue drafting the Five-Year Development Plan of the LSU System. The workshop addressed the key change signals initially identified through careful assessment and analysis of the university's current thrusts and programs as well as future needs during the first planning session held in Hilongos, Leyte on September 13-14, 2003.

LSU Housing Commission

The Office of the President created the LSU Housing Commission to replace the LSU Housing Committee. It is tasked to manage the funds collected from rental and donations for housing and recommend measures for effective and efficient management and maintenance of all LSU housing units including those of the satellite campuses.

Manpower Resources

As of December 31, 2004, the LSU System had 360 regular administrative personnel consisting of 297 personnel in the LSU Main, 15 in LSU-Alangalang, 16 - LSU-Isabel, 16 - LSU-Tolosa, and 16 - LSU-Villaba.

Trainings

A total of 191 administrative staff further honed their knowledge by attending a total of 105 trainings (2 international, 34 national, 21 regional, and 48 local). Such trainings covered the following topics/concerns: team-building, values reorientation, guidance and counseling, domestic violence, gender, sexuality and reproductive health, vocational guidance, preparation of review and conduct of review classes, property and supply management, performance-based and push over analysis design of buildings, educators assembly for environmental protection and management, zonal orientation of CMO 30, s. 2004, and records management (Table 10).

Donation

The European Nature Heritage Fund (EURONATUR) of Stuttgart, Germany donated to LSU one unit of L200 Strada 4x4 motor vehicle and 10 units of Binoculars.

Acquisitions

The LSU Main Campus purchased a set of ID printing equipment consisting of a FARGO card printer, Logitech digital camera with tripod, topaz signature tablet, and ID Now software - to cater to the need for an ID system in the LSU Main and satellite campuses and in the neighboring schools in Leyte.

The different administrative offices acquired various equipment/facilities during the year, as follows:

Planning Office - 1 unit each of colored printer and tape recorder

University Review Center - 1 unit each of duplicator machine, NEC LCD projector with document camera, computer notebook, printer, and fax machine

Administrative and Legal Offices - 1 unit each of colored printer and computer

Cash Division - a check writer

Infirmery - portable dental high speed

Library - 1 unit each of hand drill, VHS player, computer set and scanner, 2 units steel card catalog cabinet, and 10 units steel bookshelves

Security Office - 1 unit each of radiator and portable emergency revolving light, and 3 units each of electric fan and wall clock

Registrar - heavy-duty puncher, 2 units printer, 3 units each of computer and ceiling fan, and 5 units APC Back-UPS

Office of the Curriculum and Instructional Materials Development - 1 unit each of water dispenser and 3-in-one printer, scanner, copier and 2 pieces flashlight

Graduate School - 1 unit each of computer, printer, CD writer, and Pentium 4 motherboard, 2 pieces hard disk, and 4 pieces disk drive

Office of Student Affairs - 1 unit each of VCD-Karaoke, APC Back-UPS, copy holder, and cabinet and 3 units electric stand fan

National Service Training Program Office - 1 set each of base and snare drums and 2 megaphones

Guest House - 1 unit each of big freezer, refrigerator and stove, 3 pieces each of thermos, small and big carajay and stainless kettle, 14 dozens of spoons and forks, 6 dozens small platter, 6 dozens cups and saucers, 72 pairs of stainless forks and spoons

Hostel - 1 unit each of TV set, vacuum cleaner, and generator battery, 2 units refrigerator, 4 pieces each of mattress and pillow, 6 airconditioning units, 12 pieces woolen blankets, 60 sets flat and fitted sheets, and 120 pieces bath towels.



The newly acquired ID printing equipment of the LSU Main Campus.

Table 10. Trainings, seminars, workshops, conventions attended by administrative staff.

Office/Unit	International		National		Regional		Local	
	Trng.	Participants	Trng.	Participants	Trng.	Participants	Trng.	Participants
Office of the President								
Planning Office	-	-	1	1	-	-	1	1
URC	-	-	1	1	-	-	-	-
ICU	-	-	-	-	-	-	2	2
SUB-TOTAL	-	-	2	2	-	-	3	3
Office of the Vice President for Academic Affairs								
OCIMD	1	1	4	4	2	2	3	3
OSA	-	-	3	3	-	-	4	4
Graduate School	-	-	-	-	-	-	2	8
Library	-	-	9	9	2	11	1	1
Registrar	-	-	4	4	1	1	-	-
NSTP	-	-	1	1	-	-	1	1
MMDC	-	-	-	-	-	-	3	5
SUB-TOTAL	1	1	21	21	5	14	14	22
Office of the Vice President for Administration & Finance								
ODA	-	-	1	1	-	-	1	1
PPO	-	-	-	-	1	2	-	-
Property	-	-	-	-	-	-	3	7
Infirmary	-	-	-	-	1	3	-	-
Security Services	-	-	-	-	-	-	1	33
SUB-TOTAL	-	-	1	1	2	5	5	41
Office of the Vice President for Research & Extension								
RETD	1	1	2	2	7	17	13	18
SUB-TOTAL	1	1	2	2	7	17	13	18
Satellite Campuses								
LSU-Alangalang	-	-	4	4	2	3	3	5
LSU-Villaba	-	-	4	8	5	5	10	18
SUB-TOTAL	-	-	8	12	7	8	13	23
GRAND TOTAL	2	2	34	38	21	44	48	107

LSU'S ALLOTMENTS, EXPENDITURES AND BALANCES, CY 2003 AND 2004.

FUNCTION	ALLOTMENT		EXPENDITURE		BALANCE	
	2003	2004	2003	2004	2003	2004
CURRENT APPROPRIATION						
A. Instruction Services	136,737,544.00	127,901,945.00	135,295,991.00	127,091,304.00	1,441,553.00	810,641.00
1. Advanced Education	8,867,146.00	8,769,770.00	8,063,437.00	7,809,486.00	803,709.00	960,284.00
2. Higher Education	76,684,586.00	76,046,218.00	75,331,848.00	76,198,214.00	1,352,738.00	(151,996.00)
3. External Campuses	51,185,812.00	43,085,957.00	51,900,706.00	43,083,604.00	(714,894.00)	2,353.00
B. Research Services	33,837,000.00	33,520,299.00	32,527,640.00	31,802,355.00	1,309,360.00	1,717,944.00
C. Extension Services	9,054,000.00	9,003,000.00	8,784,468.00	8,658,375.00	269,532.00	344,625.00
D. Auxiliary Services	10,294,000.00	10,819,856.00	10,397,313.00	10,648,449.00	(103,313.00)	171,407.00
E. General Administration and Support Services	39,465,210.00	37,840,061.00	39,819,341.00	38,716,781.00	(354,131.00)	(876,720.00)
F. Productivity Incentive Bonus	1,612,000.00	1,528,000.00	2,466,085.00	1,416,559.00	(854,085.00)	111,441.00
TOTAL	230,999,754.00	220,613,161.00	229,290,838.00	218,333,823.00	1,708,916.00	2,279,338.00
CONTINUING APPROPRIATION						
IT Equipment	500,000.00		499,192.40		807.60	
IT Building	5,000,000.00		5,000,000.00		-	
TOTAL	5,500,000.00		5,499,192.40		807.60	





Dr. Onofre R. Pagsanghan, retired professor of Ateneo de Manila, served as one of the speakers in the seminar series for teaching effectiveness and talked on "Teaching as a Vocation" on January 31, 2004 at the LSU Center for Continuing Education where he stressed that teachers who love their work would strive hard to ensure effective learning among their students.

Mr. Josefo B. Tuyor, 1992 BS in Agriculture graduate (cum laude) and Operations Officer for the Environment of the World Bank Office in Manila, was the guest speaker during the 25th LSU Honors and Awards Convocation on February 26, 2004.

The **National Commission for Culture and the Arts (NCCA)**, in collaboration with the Local Government Unit (LGU) of Baybay, Leyte and the LSU Culture and the Arts Center (CAC), sponsored a seminar workshop on "Festival Management and Dance Choreography" on February 25-27, 2004. The seminar was participated in by 49 representatives from different municipalities of Leyte (Alangalang, Albuera, Baybay, Carigara, Hindang, Isabel, and Ormoc), Cebu State College of Science and Technology, and LSU.

Atty. Danny N. Valenzona, a 1990 B. S. Development Communication graduate (magna cum laude) and currently Director for Alternative Law of the University of San Agustin, Iloilo City, talked on "Responsible Reporting" during the seminar sponsored by the Department of Development Communication (DDC).

DevCom Alumni, and DevCom Students Society on March 6, 2004.

LSU received 50 units of waste containers donated by the City of Stuttgart in Germany through Dr. Claus-Peter Hutter, President of the European Nature Heritage Fund (Euronature), on March 11, 2004. The waste containers are accordingly marked for the purpose of segregating and systematic disposal of biodegradable, non-biodegradable, and recyclable wastes.

The **LSU Culture and the Arts Center (CAC)** held its "1st CAC Performers Recognition Nite" on March 12, 2004 at the Center for Continuing Education (CCE) where 80 student performers were given certificates of membership for their extra time devoted in carrying out the functions of the center either in the field of music, dance, visual arts, or acting. Sixteen (16) graduating students were given "Service Award" for showing their talents and untiringly rendering services in various occasions/affairs of the University.

Dr. Norman Uphoff, Director of Cornell International Institute for Food, Agriculture and Development (CIIFAD) and Professor of Cornell University (CU) in Ithaca New York, USA, conducted a seminar workshop on "Systems of Rice Intensification (SRI)" and Emerging Innovation in Agroecology" at the Farm and Resource Management Institute (FARMI) on March 25-26, 2004.

Dr. Edgardo E. Tulin, Director of Curriculum and Instructional Materials Development, in his

CHED Commissioner, Dr. Carlito S. Puno, receives a briefing on LSU technologies during his visit to LSU (top); Dr. Claus-Peter Hutter (2nd from left) together with LSU officials pose behind the waste containers donated by the City of Stuttgart in Germany (middle); and His Excellency Herbert Jess, Ambassador of the Federal Republic of Germany to the Philippines, pose with LSU officials during his visit to LSU (bottom);



message as commencement speaker during the 74th Commencement Exercises on March 26, 2004 of the LSU Laboratory High School, exhorted the graduates to develop and use their talents to the fullest for the benefit of Filipinos and make God the center of their lives.

Dir. Leonardo R. Sibbaluca, Director of the Department of Environment and Natural Resources (DENR), Region 8 was the commencement speaker during the 30th Commencement Exercises of the LSU-Alangalang Campus on March 30, 2004.

Senator Orly S. Mercado represented President Gloria Macapagal Arroyo as keynote speaker during LSU's 51st Commencement Exercises on April 2, 2004. He challenged the graduates to have service as their drive in life and urged them to breathe life into their education and profession through genuine service to fellowmen.

Dr. Victor O. Ramos, Senior Advisor of the Philippine Environmental Governance Program of USAID and former DENR Secretary, keynoted the

23rd National Conference and Scientific Meeting of the Environmental Education Network of the Philippines (EENP) on May 26-28, 2004 and stressed the importance of educating people on the value of natural resources as part of their lives so that they will take care of these resources. He likewise pointed out that the community approach is the right strategy for reducing poverty and at the same time restoring forest and coastal ecosystems.

Dr. Janet Hawkes of the Cornell Educational Resources Program and Director of the New York Agriculture in the Classroom, was the resource speaker during the Seminar-Workshop on Environmental Education which was funded by the Association Liaison Office (ALO) for University Cooperation of USAID on May 24-25, 2004.

Dr. Carlito S. Puno, CHED Commissioner and Acting Chairman of LSU Board of Regents, visited the LSU Main Campus on June 2-3, 2004.

His Excellency Herbert Jess, Ambassador of the Federal Republic of Germany to the Philippines, together with his wife, paid a short visit to the LSU Main Campus on July 2, 2004.

To provide a common forum for the LSU constituents to familiarize with each other at the start of the school year, the LSU Main Campus held the General Academic Convocation on July 13, 2004 at the LSU Gymnasium.

Hon. Carmen L. Cari, Representative of the 5th District of Leyte, in her speech as guest of honor during the formal opening of the Flower and Garden Show on August 5, 2004, disclosed her plan to put up an orchid growing project as a livelihood enterprise for barangay people in her immediate locality.



Mr. Fidelo A. Rojas of Barangay Sto. Niño, Isabel, Leyte was the **2004 Outstanding Farmer-Entrepreneur** during the Farmer's Field Day on August 9, 2004 and was awarded the *Ugmad Award*. The farmer nominees for the award were evaluated based on their innovativeness, farm productivity, leadership abilities, and concern for the environment.

Hon. Jericho L. Petilla, Governor of Leyte, who served as keynote speaker during the 80th Founding Anniversary of LSU on August 11, 2004, acknowledged that this year's anniversary theme "LSU-Industry Partnership for a Strong Republic" reflects the University's important role in addressing the prevailing concerns and problems on industry. He also noted that LSU's agricultural technologies could attract potential investors and trigger the establishment of more industrial and agricultural ventures.

The awardees during the 80th Founding Anniversary Convocation Program of LSU on August 11, 2004 were:

Former Leyte Governor **Remedios L. Petilla** - *Sandigan Award* (LSU's most prestigious award) "in recognition of her untiring support

to the programs and projects of the university geared towards helping the poor and underprivileged farmers and fisherfolks since the start of her term as Provincial Governor of Leyte until the present. Among others, she gives the cash award to the Outstanding Farmer during the Farmer's Field Day, sufficient financial support for a successful holding of the Flower and Garden Show, and other activities. During the graduation rites she has regularly given a medal and generous cash award to the most outstanding student of LSU in order to encourage academic excellence, responsible leadership, and community involvement."

Mr. Claudio C. Donal, a 1978 LSU alumnus - **Entrepreneurship Award** "for his laudable farming skills and successful agricultural and entrepreneurial ventures."

The following LSU faculty and staff were awarded for their remarkable performances: **Dr. Lina T. Villacarlos** - Exemplary Academician Award; **Dr. Ma. Juliet C. Ceniza** - Exemplary Teacher Award; **Dr. Edgardo L. Tulin** - Exemplary Researcher Award; **Dr. Roberto C. Guarte** - Exemplary Extensionist Award; **Ms. Adelina O. Carreno** - Best Academic Non-

The awardees during the LSU Anniversary: (top L-R) Mr. Claudio Donal (Entrepreneurship Award), Dr. Lina Villacarlos (Academician Award), Dr. Ma. Juliet Ceniza (Teacher Award), Dr. Edgardo Tulin (Researcher Award), and Dr. Roberto Guarte (Extensionist Award).

Teaching Staff (Broadcaster):
Mr. Demetrio Belmonte - *Best Science Research Assistant*;
Ms. Arlyn Guinipaan - *Best Clerk*;
 and **Mr. Hipolito Ibañez** - *Best Utility Worker (Tolosa Campus)*

Recipients of the **Mt. Pangasugan Award** (which was given to new retirees with leadership positions prior to retirement) were: **Prof. Felixberto C. Canoy**, **Dr. Rodolfo G. Escalada**, **Dr. Margarito C. Escalante**, **Prof. Fernando A. Evangelio** (posthumous), **Dr. Guindolino R. Gerona**, **Dr. Celedonia A. Palaña** (Tolosa Campus), **Dr. Vita S. Polo**, **Dr. Victor R. Ritaga** (Isabel Campus), **Prof. Remedios R. Russel** (posthumous), and **Dr. Florencio A. Saladaga**.

Service Awards were given to **Mr. Faustino D. Albarico** (posthumous), **Mr. Raul C. Bontuyan** (posthumous), **Ms. Rosalind M. Chiong**, **Ms. Mercita P. Dingal**, **Ms. Rosita P. Dula** (posthumous, Tolosa Campus), **Ms. Dominga V. Elecho** (Isabel Campus), **Mr. Rodolfo P. Iyana** (posthumous), **Ms. Edelmira A. Labastida** (Alangalang Campus), **Mr. Bonifacio V. Oquias Sr.**, **Mr. Sabas E. Oquias**, **Ms. Virginia P. Pedrera** (Alangalang Campus), **Ms. Cecilia S. Rojas** (posthumous, Isabel Campus), **Dr. Cecilia V. Silao**, **Ms. Alicia N. Tante**, (Alangalang Campus), and **Ms. Milagros C. Yu**.

Mr. and Mrs. Victorio Perez and Family
 - *LSU Family of the Year Award*

Shane F. Sembrano, a third year BS Development Communication (BSDC), was crowned as "**Miss LSU 2004**." Completing her court were **Sheena Lou T. Rosales**, 1st runner up; **Griselda L. Ando**, 2nd runner up; **Honeylene G. Valenzona**, 3rd runner up; and **Ellalaine T. Maglines**, 4th runner up.

Shane F. Sembrano, Miss LSU '04 (leftmost), and the other winners of the Miss LSU Beauty Pageant.



The **Kidlat Team** emerged as the champion during the 2004 Rodeo on August 10, 2004, followed by the Shaman Team, 2nd; Parokya ni Bogoy, 3rd; and Tibay Team, 4th. **Juliedith V. Cabugas** of the Kidlat Team won the title as "**Miss Rodeo 2004**" and she was followed by **Lucelyn C. Dacumos** of the Shaman Team, 1st runner up; **Haide C. Caintic** of the Parokya ni Bogoy, 2nd runner up; and **Lorefiel R. Aldonza** of the Tibay Team, 3rd runner up.

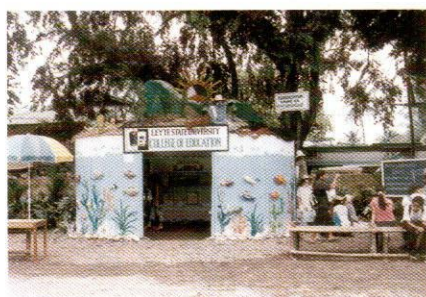
The **Kaugmaran** (progress) Festival, a street dancing presentation of eight (8) groups including the four LSU satellite campuses, entertained the LSU community and anniversary guests on August 11, 2004 at the Oval Grounds. The activity marked the launching of the yearly **Kaugmaran** Festival street dancing competition to be started in 2005.

The following won the different booth contest categories during the 80th LSU Founding Anniversary from August 9-11, 2004:

LSU Colleges and Satellite Campuses
 - **College of Agriculture** - *Most Symbolic*; **College of Arts and Sciences** - *Most Environment-Friendly*; **College of Education** - *Booth of the Year* and *Most Artistic*.

R & E Centers - **PhilRootcrops** - *Booth of the Year*, *Most Symbolic*, and *Most Artistic*; **National Abaca Research Center** - *Most Environment-Friendly*.

Student Organizations - **Student Body Organization of LSU Laboratory High School** - *Booth of the Year* and *Most Symbolic*; **D' Builders** - *Most Artistic*; **Philippine Society of Agricultural Engineers** (Student Chapter) - *Most Environment-Friendly*.



Non-LSU Agencies - **Department of Environment and Natural Resources** - *Booth of the Year, Most Artistic, and Most Environment-Friendly*; **Department of Agriculture-Baybay** - *Most Symbolic*.

Prof. Dr. H. Rudiger Korff, Director of the Center for Tropical Agriculture of Hohenheim University in Germany, graced the 23rd anniversary celebration of the Institute for Strategic Research and Development Studies (ISRDS) on September 8, 2004.

Dr. Eliseo R. Ponce, Senior Research Fellow of the Philippine Institute for Development Studies, gave a lecture on "Knowledge Management in Public Universities - Gearing the Leyte State University for the 21st Century" to LSU key officials and staff on September 10, 2004 at the ISRDS Training Hall.

Mrs. Rebecca B. Napiere, University Librarian of LSU, got elected as one of the executive council members of the National Commission on Libraries and Information Services (NCLIS) under the auspices of the National Commission for Culture and the Arts (NCCA). NCLIS is composed of volunteer librarians, information professionals, educators, patrons, and representatives of organizations and institutions whose objectives are supportive of libraries and information services.

The Philippine Educational Theater Association (PETA) Children's Theater Program staged a trilogy of fairytales by the famous Danish writer Hans Christian Andersen entitled "Hans Christian Andersen must be Filipino" at the LSU Gymnatorium on November 29, 2004. The show was sponsored by the LSU Faculty Association (LSUFA), Culture and the Arts Center (CAC), and the Student Scholarship Fund Raising Committee for the benefit of underprivileged but deserving students of LSU and other projects of LSUFA and CAC.

Eight forestry/environmental science students from the University of Queensland (UQ), Australia, namely: Steven Bowden, Muya Burns, Melissa Gordon, Jennifer Mackay, Eri Matsuura, Breit Paroz, Siatua Sala, and Cara Thomson had their 12-day International Forestry Students Tour at LSU from November 20 to December 1, 2004. They were accompanied by Mr. Jack Baynes, lecturer from the University of Queensland.

Prof. Dr. Friedhelm Goltenboth, former ViSCA-GTZ Consultant, and Mr. Allen Molen, Deputy Director of the Leyte Island Project (LIP), attended the opening of the GTZ-supported Plant Disease Diagnostic Laboratory (PDDL) at LSU on December 2, 2004. Dr. Goltenboth brought an additional donation of P140,000.00 for the purchase of chemicals and other supplies of the laboratory from the PPP-Abaca Project.

Winners of the "Booth of the Year" competition: (L-R) College of Education, PhilRootcrops and SBO of LSU Laboratory High School.

In support of the town fiesta celebration of Baybay, LSU, through the Culture and the Arts Center (CAC) entertained the people of the said town with a developmental one-act play dubbed "*Sa Pagtingog sa Pungaw*" (Cry of the Nightbird) on December 10, 2004 at the Baybay Gymnasium. The show was specially designed to promote/advocate environmental conservation and family planning.

The LSU-Villaba Campus actively served as the venue for the medical mission of the 19th Infantry Battalion of the Philippine Army and the Provincial Health Office through the Villaba District Hospital. Its students were among those who benefited from the medical mission.

LSU hosted seminars, trainings, workshops/meetings during the year, as follows:

2004 Orientation-Seminar for Graduating Teacher Education Students conducted by the Philippine Association for Teacher Education (PAFTE) of Region VIII in coordination with the Commission on Higher Education (CHED-8) on March 3, 2004. The seminar was participated in by 386 teacher

education graduating students from Bato Institute of Science and Technology (BIST), Franciscan College of the Immaculate Conception (FCIC), Naval Institute of Technology (NIT), Saint Peter's College (SPC), LSU-Alangalang Campus, and LSU-Main Campus.

Visayas RDE Convergence Consultation and Planning Workshop: Agriculture Sector on April 5-6, 2004 sponsored by PCARRD, DA-BAR, and DA-ATI. The participants were composed of agriculture and fisheries research managers from the three regions of the Visayas (Central, Eastern, and Western) together with the officials of the Philippine Council for Agriculture, Forestry and Natural Resources Research and Development (PCARRD), Department of Agriculture-Bureau of Agricultural Research (DA-BAR), and the DA-Agricultural Training Institute (DA-ATI).

United Methodist Youth Fellowship of the Philippines (UMYFP) on April 14-17, 2004.

International Leaders Conference of Youth for Christ (YFC) on April 16-18, 2004 sponsored by the Youth for Christ (YFC) and Couples for Christ (CFC). The conference was participated in by nearly 9,000 participants from all over the country and YFC representatives from Australia, Canada, Indonesia, Norway, Solomon Islands, Thailand, United Kingdom, and United States.

23rd National Conference and Scientific Meeting of the Environmental Education Network of the Philippines (EENP) on May 26-28, 2004 with the theme: "Eco-governance for Poverty Alleviation: a Challenge for Environmental Education."

Participants of the "Visayas RDE convergence Consultation and Planning Workshop: Agriculture Sector".





Seminar-Workshop on Environmental Education on May 24-25, 2004 which was funded by the Association Liaison Office (ALO) for University Cooperation of USAID. The workshop aimed to enable the participants to come up with modules incorporating environmental education into their course content and classroom activities.

Seminar-Workshop on "Integration of Health Science in the Curriculum" conducted by the Philippine Health Social Science Association (PHSSA) in collaboration with the CHED Zonal Research Center-Visayas III on June 2-3, 2004. The activity was held to introduce the teaching module in health social science developed by PHSSA which was already adopted by the College of Medicine of West Visayas State University in Iloilo and UP Manila.

Training on Conservation of Forest Genetic Resources on August 9-13, 2004 which was jointly sponsored by the ASEAN-EU University Network Programme (AUNP), Georg-August-University of Goettingen, and Leyte State University. It was participated in by representatives from Haribon Foundation, Samar State College of Agriculture and Forestry, Asian Regional Center for Agroforestry, Central Visayas State College of

Agriculture and Forestry, and LSU's College of Forestry.

10th International Seminar and Workshop on Tropical Ecology on August 22 to September 5, 2004 organized by LSU, University of Hohenheim and Martin Luther University (both in Germany), and Biological Station Lunz in Austria. The participants were composed of 27 German and Filipino college students in agriculture, biology, fisheries, forestry, marine sciences, sociology and other related fields.

International Planning Workshop to Strengthen the MSc in Rural Sociology Program on September 6-8, 2004 with financial support from the Friedrich Ebert Stiftung (FES) of the Federal Republic of Germany. It was participated in by 15 professors from the University Kebangsaan Malaysia; National Institute for Development Administration, Thailand; University of Hohenheim, Germany; and staff of LSU's Institute for Strategic Research and Development Studies (ISRDS).

1st Council Meeting of the Eastern Visayas Region Librarians Council (EVRLC) on September 24, 2004 where EVRLC elected its first set of officers.

Participants of the "23rd National Conference and Scientific Meeting of the Environmental Education Network of the Philippines" (left); and "Training on Conservation of Forest Genetic Resources" (right).

Awards Received by Faculty and Staff

Name of Award	Recipient	Agency	Date
NATIONAL LEVEL			
CSSP Best Paper Award (Downstream Research Category)	Prof. Feliciano G. Sinon	CSSP	March 2, 2004
Finalist to the CSSP Best Paper Award (Upstream Category)	Dr. Canesio D. Predo	CSSP	March 2, 2004
Finalist to the CSSP Best Poster Paper (Applied Category)	Dr. Lelita R. Gonzal	CSSP	March 2, 2004
Best Research Mentor Award	Dr. Antonio L. Acedo, Jr.	DOST-Intel Phil.	March 3, 2004
Best Adviser Award in Information & Technology	Dr. Lemuel M. Diamante	SEAMEO-INNOTECH	March 5, 2004
3 rd Grand Prize Winner (Adviser)	Dr. Lemuel M. Diamante	Intel Philippines	March 5, 2004
Yale Engineering Award (Adviser)	Dr. Lemuel M. Diamante	Yale University	
Intel Excellence in Computer Science Award (Adviser)	Dr. Lemuel M. Diamante	Intel U. S. A.	
CHED Republica Award for Research Publication	Dr. Antonio L. Acedo, Jr.	CHED	May 18, 2004
Outstanding Centennial Alumnus Award in Forestry Education	Dr. Eduardo O. Mangaoang	FUP	Aug. 12, 2004
PARRFI Professorial Chair	Dr. Edgardo E. Tulin	PARRFI	Sept. 2004
Outstanding AFMA R & D Paper Award	Dr. Marilyn M. Belarmino	DA-BAR	Oct. 5, 2004
AFMA R & D Paper Award	Prof. Algerico M. Mariscal	DA-BAR	Oct. 5, 2004
Best Research Paper Award	Dr. Bernardita P. Germano	PCAMRRD	Dec. 7-8, 2004
REGIONAL LEVEL			
Outstanding Paper (Basic Category) - 1 st prize	Dr. Marilyn M. Belarmino Dr. Lelita R. Gonzal Ms. Elizabeth C. Parac	VICARP-RRDEN	Aug. 31, 2004
Outstanding Paper (Applied Category) - 1 st prize and Best Paper for the Applied Research Category	Dr. Ma. Juliet C. Ceniza Dr. Paciencia P. Milan Dr. Victor B. Asio Dr. Salome B. Bulayog Ms. Mylene D. Napiza Mr. Marlito Jose M. Bande Mr. Hernando L. Mondal Mr. Darwin B. Posas Mr. Jimmy Pogosa	VICARP-RRDEN	Aug. 31, 2004

Name of Award	Recipient	Agency	Date
REGIONAL LEVEL <i>(continued...)</i>			
Best Paper (Applied Category)	Prof. Feliciano G. Sinon Engr. A. C. Martinez	VICARP-RRDEN	Aug. 31, 2004
Best Paper (Basic Category)	Ms. Renezita S. Come Mr. Rodel D. Lasco Ms. Regina N. Banatica	VICARP-RRDEN	Aug. 31, 2004
Best Paper (Basic Category)	Prof. Dilberto O. Ferraren Mr. Demetrio V. Belmonte, Jr. Dr. Jose R. Pardales, Jr.	VICARP-RRDEN	Aug. 31, 2004
Best Paper (Basic Category)	Dr. Tomas J. Fernandez, Jr. Mr. E. Balolong, Jr. Mr. H. Carabin Mr. A. L. Olveda Mr. R. L. Joseph Mr. S. T. McGarvey	VICARP-RRDEN	Aug. 31, 2004
Best Paper (Basic Category)	Dr. Lelita R. Gonzal Mr. Geoffrey A. Pono	VICARP-RRDEN	Aug. 31, 2004
Best Paper (Applied Category)	Dr. Daniel Leslie S. Tan Dr. Ramon R. Orias Mr. Roldan V. Piedraverde	VICARP-RRDEN	Aug. 31, 2004
Best Paper (Applied Category)	Prof. Feliciano G. Sinon Mr. Richard C. Balaresia	VICARP-RRDEN	Aug. 31, 2004
Best Paper (Applied Category)	Dr. Wolfreda T. Alesna Mr. Ludito V. Ramirez	VICARP-RRDEN	Aug. 31, 2004
Best Paper (Development Category)	Dr. Roberto C. Guarte Ms. Janet P. Sinon Mr. Nilo L. Leoma	VICARP-RRDEN	Aug. 31, 2004
Outstanding Poster (Agriculture Category)	Prof. Luz O. Moreno Ms. Amie A. Parac Mr. Felix L. Ocon	VICARP-RRDEN	Aug. 31, 2004
Best Poster (Agriculture Category)	Prof. Villaluz Z. Acedo Prof. Algerico M. Mariscal Ms. Catherine Arradaza	VICARP-RRDEN	Aug. 31, 2004
Best Poster (Agriculture Category)	Dr. Angela A. Ferraren Dr. Raquel C. Serohijos Ms. Himaya P. Mula	VICARP-RRDEN	Aug. 31, 2004
Best Poster (Environment and Natural Resources Category)	Dr. Eduardo O. Mangaoang Mr. Edwin D. Cedamon Mr. Nestor O. Gregorio Mr. Arturo E. Pasa	VICARP-RRDEN	Aug. 31, 2004
Best Poster (Engineering, Energy, and Industry Category)	Prof. Feliciano G. Sinon Engr. Macuin Delantar	VICARP-RRDEN	Aug. 31, 2004

Name of Award	Recipient	Agency	Date
Best Poster (Engineering, Energy, and Industry Category)	Dr. Alan B. Loreto Dr. Marcelo A. Quevedo Prof. Algerico M. Mariscal Dr. Masanori Okazaki Dr. Koki Toyota	VICARP-RRDEN	Aug. 31, 2004
INSTITUTIONAL/MUNICIPAL LEVEL			
Keeper of Service Award	Dr. Raquel C. Serojihos Dr. Calendario L. Calibo Prof. Elizabeth D. Briones Prof. Arsenio D. Ramos	OSA, LSU	March 5, 2004
Outstanding Undergraduate Thesis Adviser (Applied Biological Sciences Category)	Dr. Lualhati M. Noriel	Phi Delta, the Honor Society of Science	April 2, 2004
Outstanding Undergraduate Thesis Adviser (Social Science Category)	Dr. Wolfreda T. Alesna	Phi Delta, the Honor Society of Science	April 2, 2004
Outstanding Undergraduate Thesis Adviser (Plaque of Recognition)	Dr. Edgardo E. Tulin	Phi Delta, the Honor Society of Science	April 2, 2004
Best Undergraduate Thesis Adviser (Development Communication Category)	Mr. Ludito V. Ramirez	Phi Delta, the Honor Society of Science	April 2, 2004
Exemplary Academician of the Year	Dr. Lina T. Villacarlos	LSU	Aug. 11, 2004
Exemplary Researcher Award	Dr. Edgardo E. Tulin	LSU	Aug. 11, 2004
Exemplary Extensionist Award	Dr. Roberto C. Guarte	LSU	Aug. 11, 2004
Exemplary Teacher Award	Dr. Ma. Juliet C. Ceniza	LSU	Aug. 11, 2004
Best Administrative Support Staff (Broadcaster)	Ms. Adelina O. Carreno	LSU	Aug. 11, 2004
Best Science Research Assistant	Mr. Demetrio Belmonte	LSU	Aug. 11, 2004
Best Clerk	Ms. Arlyn Guinipaan	LSU	Aug. 11, 2004
Best Utility Worker (Tolosa Campus)	Mr. Hipolito Ibañez	LSU	Aug. 11, 2004
Service Award	Ms. Virginia P. Pedrera Ms. Alicia N. Tante Manuel C. Mamita Benedicto V. Nuñez	LSU-Alangalang Campus	Sept. 2004
Loyalty Award	Ms. Rosiana S. Porcare Ms. Basilisa F. Nastor Obdulio R. Masendo Lorenzo S. Melchor	LSU-Alangalang Campus	Sept. 2004
High School Science Project (Adviser)	Dr. Lemuel M. Diamante	DepEd-Leyte Division	Oct. 22, 2004
Finalist - Best Undergraduate Thesis (Adviser)	Dr. Lemuel M. Diamante	PAFTE	
Certificate of Recognition (as school paper adviser/coach)	Mr. John Michael V. Faller	DepEd	Oct. 22, 2004

Awards Received by Students

Name of Award	Recipient	Agency	Date
NATIONAL LEVEL			
2 nd Grand Prize in the Life Sciences (Individual Category)	Jeella Z. Acedo	Intel-Philippines Science Fair	March 2-5, 2004
2 nd Grand Prize in the Life Sciences (Team category)	Francis Ariel R. Gapasin Ma. Fe. Novero C. Evangelio Emil Joseph O. Carreno	Intel-Philippines Science Fair	March 2-5, 2004
3 rd Grand Prize in the Physical/ Applied Sciences, Intel Philippines Award for Best Computer Use, Intel Excellence in Computer Science Award, Yale Engineering Award, Science and Technology Award Netopia Young IT Achievement Award	Stephen Alexis G. Baltazar Janice F. Bellezas Paul Winston W. Tabada	Intel-Philippines Science Fair	March 2-5, 2004
REGIONAL LEVEL			
1 st place in the Short Arm Category	LTC Joseph S. Sabas	1 st Advanced Regional Shooting Competition	Feb. 17, 2004
2 nd place in the Long Arm Category	Cadet COL Manuel S. Agosto	1 st Advanced Regional Shooting Competition	Feb. 17, 2004
1 st place (Kundiman Contest)	Libmario Canta	2 nd PASUC Regional Cultural Festival	June 25, 2004
2 nd place (Vocal Duet)	Jehoshabeath Duatin Nelson Castaños	2 nd PASUC Regional Cultural Festival	June 25, 2004
2 nd place (Dance Sport)	Jovel Aberilla Charmaine Calingacion	2 nd PASUC Regional Cultural Festival	June 25, 2004
3 rd place (Painting)	Jose Francis Loui G. Amar	2 nd PASUC Regional Cultural Festival	June 25, 2004
3 rd place (Talumpati)	Juralene Capulac	2 nd PASUC Regional Cultural Festival	June 25, 2004
1 st place	Jovie Ann Mate	Regional Meat Processing Contest	June 28, 2004
2 nd place 3 rd place	David Reuel R. Villamayor Asha Virlin B. Flandez	13 th Philippine Statistics Quiz Regional elimination	Nov. 17, 2004
1 st place in the Life Sciences (Individual Category)	Lourd Franz Gabunada	Regional Intel Philippines Science Fair	Dec. 13-14, 2004
1 st place in the Physical Sciences (Team Category)	Paul Adonis Abenoja Joseph Bacusmo James Yamba	Regional Intel Philippines Science Fair	Dec. 13-14, 2004

Name of Award	Recipient	Agency	Date
REGIONAL LEVEL <i>(continued...)</i>			
2 nd place in the Physical Sciences (Team Category)	Alvin Erick Bales Paulo Angelo Sosmeña	Regional Intel Philippines Science Fair	Dec. 13-14, 2004
3 rd place in the Life Sciences (Team Category)	Mark Isaiah Quevedo Roel-Jed Adam Palomar Merian Abigail Loreto	Regional Intel Philippines Science Fair	Dec. 13-14, 2004
13 th place 14 th place 19 th place	Rodolfo Wenceslao, Jr. Dante Magpatoc Neceforo Paña	National Milo Marathon (Regional Elimination)	Aug. 22, 2004
PROVINCIAL LEVEL			
1 st place 2 nd place 3 rd place	David Reuel R. Villamayor Clark B. Macariola Asha Virlin B. Flandez	Philippine Statistics Quiz Provincial Elimination	Nov. 8, 2004
INSTITUTIONAL/MUNICIPAL LEVEL			
Grand prize	Moises Neil Serioño Leslee Ann Villanueva	Song Festival 2004	Jan. 30, 2004
2 nd prize	Peewee Espiritu Francisco Manggay	Song Festival 2004	Jan. 30, 2004
3 rd prize	Arnold Romano Noel Catingub	Song Festival 2004	Jan. 30, 2004
Best Interpreter Award	Chandel Bisnar Roy Limpangog	Song Festival 2004	Jan. 30, 2004
Leadership Award	Shirah Ed Adel B. Villegas	First Awards Convocation	Mar. 5, 2005
Endeavor Award	Lucito M. Lampit Ariel T. Sorita	First Awards Convocation	Mar. 5, 2005
Outstanding Undergraduate Thesis Award for Applied/Biological Sciences	Carmela A. Cagasan	2004 Phi Delta Outstanding Undergraduate Thesis Awards	April 2, 2004
Outstanding Undergraduate Thesis Award for Social Sciences	Hedda Dargantes	2004 Phi Delta Outstanding Undergraduate Thesis Awards	April 2, 2004
1 st place in the Search for Outstanding Research Paper	Shinsie Loen O. Tiempo Apple Jean D. Rabor Cherryl O. Quiñones	7 th POSTE Convention and Seminar Workshop	Sept. 24-26, 2004
2 nd place in the Math-Science Olympiad	Lyzette V. Cerna Hannah Pamela D. Tan Ma. Niña Corazon C. Ceniza	7 th POSTE Convention and Seminar Workshop	Sept. 24-26, 2004
1 st place (Journalism Quiz) 2 nd place (Journalism Quiz)	Eula Marie Mangaoang Hannah Pamela D. Tan	2004 Secondary Schools Division Press Conference	Oct. 21-22, 2004
2 nd place (Radio Broadcasting)	May Charisse Fulache	2004 Secondary Schools Division Press Conference	Oct. 21-22, 2004

Publications Authored by Faculty Members & Researchers

Author	Title	Where Published
Arcay, A., L. M. Noriel, F. M. Y. Duatin, and K. Moody, 2004	Influence of Light Intensity on Germination and Reproductive Potential of <i>Borreria laevis</i> (Lam.).	Phil. Journal of Weed Science, Vol. 22:45-50
Baliña, F.T. and V.A. Quito, 2004	Factors Affecting Workload Distribution Among Academic Staff in ViSCA	Sci. & Hum. Jour. (4): 11-23
Cantiga-Jimenez, J. B., L. M. Noriel, R. T. Sanico, and E. A. Vasquez, 2004	Herbicidal Activity of Sweet Potato Extract Against Cogon (<i>Imperata cylindrical</i> L.).	Phil. Journal of Weed Science, Vol. 22:25-30
Capon, D.S. and A.C.Y. Sandoval, 2004	Job Placement of the Bachelor of Science in Agriculture Graduates of Leyte State University	Sci. & Hum. Jour. (4): 24-39
Diamante, L. M., K. Ishibashi and K. Hironaka, 2004	Effect of Temperature and Water Activity on Quality Deterioration and Shelf Life of Dried Mangoes	Annals of Tropical Research. 24 (1 & 2):60-81
Gerona, Z.D. and J.L. Seroy, 2004	Developing an English Proficiency Test for Fourth-Year Secondary Students	Sci. & Hum. Jour. (4): 1-10
Po, M.M. and B.T. Mandras, 2004	Distribution, Spread and Management Practices Against Rice Bug in Leyte	Sci. & Hum. Jour. (4): 51-62
Po, M.M. and B.T. Mandras, 2004	Biological Control of Rice Black Bug, <i>Scotinophara coarctata</i> (Fab.), in Leyte	Sci. & Hum. Jour. (4): 63-80
Polinar, A.N. and A.C.Y. Sandoval, 2004	Factors in the Adoption of Tree Conservation Practices by Upland Farmers in Southern Leyte	Sci. & Hum. Jour. (4): 40-50
Villacarlos, L.T. and B. S. Mejia, 2004	Philippine entomopathogenic fungi - I. Occurrence and diversity.	Philipp. Agric. Sci. 87(3):249-265
Villacarlos, L. T., B. S. Mejia, and R. A. Patindol, 2004	Philippine entomopathogenic fungi - II. Pathogenicity of common species to selected pests.	Philipp. Agric. Sci. 87(3):266-275
Palomar, M.K. and V.G. Palermo, 2003	Efficacy of <i>Trichoderma</i> sp. to Control <i>Lasiodiplodia theobromae</i> Causal Agent of Sweetpotato Root Rot Disease	Sci. & Hum. Jour. (3): 61-73
Veloso, M.D. and J. A. Alkuino, Jr., 2003	Demand for Sweetpotato Quality Using Hedonic Price Model in Northwestern Leyte	Sci. & Hum. Jour. (3): 1-15
Villar, A.C. and L.B. de Pedro, 2003	Reducing Pesticide Costs Using Tungro Resistant Varieties	Sci. & Hum. Jour. (3): 28-39
Villocino, S.B. and P.P. Pascual, 2003	Growth and Yield of Corn and Legume as Influenced by N-Levels and Row Intercropping Schemes	Sci. & Hum. Jour. (3): 40-60

Officers of the LSU System

Heads of LSU Campuses

(As of December 31, 2004)

MAIN CAMPUS

DR. PACIENCIA P. MILAN

*President, Leyte State University
Visca, Baybay, Leyte*

SATELLITE CAMPUSES

DR. SALVADOR C. DAGOY

*Dean, College of Agri-Industrial Technology
LSU-Isabel Campus
Isabel, Leyte*

DR. CONCHITA A. ITO

*Dean, College of Education and Agricultural Technology
LSU-Villaba Campus
Villaba, Leyte*

DR. PABLO B. PEDRERA

*Dean, College of Environmental & Agricultural Technology
LSU-Alangalang Campus
Alangalang, Leyte*

DR. ROBERTA D. LAUZON

*Dean, College of Fisheries
LSU-Tolosa Campus
Tolosa, Leyte*

Administrative Council

(AS OF DECEMBER 31, 2004)

Dr. Paciencia P. Milan	-	<i>President & Chairman</i>
Dr. Manuel K. Palomar	-	<i>Vice President for Academic Affairs</i>
Dr. Jose M. Alkuino, Jr.	-	<i>Vice President for Administration & Finance</i>
Dr. Jose L. Bacusmo	-	<i>Vice President for Research & Extension</i>
Prof. Jesusito L. Lim	-	<i>Executive Officer</i>
Mr. Daniel M. Tadtud, Jr.	-	<i>University/Board Secretary</i>
Ms. Norma V. Cala	-	<i>Director, Finance</i>
Dr. Lourdes B. Cano	-	<i>Director, Administration</i>
Dr. Nerelito P. Pascual	-	<i>Assistant to the President for Corporate Planning & Income Generation</i>
Ms. Roberta C. Lemos	-	<i>Chief Accountant</i>
Ms. Teresita L. Quiñanola	-	<i>OIC, Human Resource Management & Development Office</i>
Dr. Isabel P. Bertulfo	-	<i>Head, Infirmary</i>
Engr. Nestor M. Israel	-	<i>Superintendent, Physical Plant Office</i>
Dr. Edgardo E. Tulin	-	<i>Director, OCIMD</i>
Dr. Oscar B. Posas	-	<i>Dean, College of Agriculture</i>
Dr. Misael T. Diputado, Jr.	-	<i>OIC-Dean, Graduate School</i>
Prof. Aurora S. Alkuino	-	<i>Dean of Students</i>
Dr. Erlinda O. Landerito	-	<i>Dean, College of Arts and Sciences</i>
Dr. Dolores L. Alcober	-	<i>Dean, College of Education</i>
Dr. Gregorio J. Galinato, Jr.	-	<i>Dean, College of Engineering and Agri-Industries</i>
Dr. Eduardo O. Mangaoang	-	<i>Dean, College of Forestry</i>
Ms. Aleli A. Villocino	-	<i>OIC, Institute of Human Kinetics</i>
Dr. Tomas J. Fernandez, Jr.	-	<i>Dean, College of Veterinary Medicine</i>
Dr. Salvador C. Dagoy	-	<i>Dean, College of Agri-Industrial Technology</i>
Dr. Conchita A. Ito	-	<i>Dean, College of Education & Agricultural Technology</i>
Dr. Pablo B. Pedrera	-	<i>Dean, College of Environmental & Agricultural Technology</i>
Dr. Roberta D. Lauzon	-	<i>Dean, College of Fisheries</i>
Engr. Manolo B. Loreto	-	<i>Head, National Service Training Program</i>
Dr. Wolfreda T. Alesna	-	<i>Director, R&E Technology Dissemination</i>
Dr. Angela A. Ferraren	-	<i>Director, Research & Extension Programs</i>
Prof. Algerico M. Mariscal	-	<i>OIC, Philippine Root Crop Research & Training Center</i>
Dr. Lelita R. Gonzal	-	<i>Director, National Abaca Research Center</i>
Prof. Tessie C. Nuñez	-	<i>OIC-Director, National Coconut Research Center-Visayas</i>
Dr. Edwin A. Balbarino	-	<i>Director, Farm & Resource Management Institute</i>
Ms. Rebecca B. Napiere	-	<i>University Librarian</i>
Ms. Linda N. Mariscal	-	<i>University Registrar</i>

Board of Regents

CHAIRMAN

FR. ROLANDO V. DE LA ROSA

*Chairperson, Commission on Higher Education
DAP Bldg., San Miguel Avenue, Ortigas Center, Pasig City*

VICE-CHAIRMAN

DR. PACIENCIA P. MILAN

*President, Leyte State University
Visca, Baybay, Leyte*

MEMBERS

SEN. JUAN FLAVIER

*Chairman, Senate Committee on Education, Arts and
Culture, Senate of the Philippines Financial Center
GSIS Bldg., Pasay City*

CONG. CYNTHIA A. VILLAR

*Chairman, House Committee on Higher and Technical
Education, Congress of the Philippines
Constitution Hills, Quezon City*

DIR. BUENAVENTURA C. GO-SOCO, JR.

*Regional Executive Director
National Economic Development Authority
Region VIII, Palo, Leyte*

DIR. LEO P. CAÑEDA

*Regional Executive Director
Department of Agriculture
Region VIII, Tacloban City*

DR. ALAN L. PRESBITERO

*President, LSU Faculty Association
Leyte State University, Visca, Baybay, Leyte*

MR. BERNARDO H. TOCMO

*President, LSU Alumni Association
Leyte State University, Visca, Baybay, Leyte*

MR. ROLANDO G. PABIO

*President, College Supreme Student Council
Leyte State University, Visca, Baybay, Leyte*

PRIVATE SECTOR REPRESENTATIVES

MRS. REBECCA V. BARBUSA

Hilongos, Leyte

DR. JOSE V. MAZO

Tanauan, Leyte

BOARD SECRETARY

MR. DANIEL M. TUdTUD, JR.

*Board Secretary, Leyte State University
Visca, Baybay, Leyte*

Goals

1. Produce high and middle-level quality manpower in agriculture and allied fields to serve the development needs of the region.
2. Generate agricultural production and processing technologies and technology dissemination strategies adaptable to small farms.
3. Advocate effective policy formulation and management of rural development programs.
4. Improve the productivity, profitability, equity, and well-being of the Visayan farmers and their household members through ecologically sound natural resources management.
5. Promote effectiveness, efficiency, and productivity in the operation of the university system.

Objectives

1. To strive for excellence in agriculture education for regional and rural development.
2. To sharpen its focus on impact programs and projects in instruction, research, and the application of new knowledge for the well-being of the small Visayan farmers and rural families.
3. To build enduring linkages with national and regional institutions and agencies for the promotion of relevant instruction, meaningful research, and effective transmission of useful knowledge in the rural communities in the Visayas.

LSU 2004 Annual Report Production Staff

Consultant	•	PACIENCIA P. MILAN
Production Supervisor	•	NERELITO P. PASCUAL
	•	MANUEL K. PALOMAR
Editor	•	ZENaida D. GERONA
Text Consolidation	•	BERNARDITA P. BIBERA
Design & Layout	•	ANNETTE D. ISRAEL
Photo Credit	•	Information Office, ISRDS, NCRC-V, DYAC, FARMi, VICARP,
	•	PhilRootcrops, LSU Review Center, OSA, IHK, Dr. Daniel Leslie
	•	S. Tan, Dr. Julie D. Tan, Dr. Edwin A. Balbarino, Freddy M.
	•	Baldos, Annette D. Israel, Jeela Acedo, Julius Abela
Facilitator	•	RONILLO V. CANO

Leyte State University

6521 Visca, Baybay, Leyte, Philippines

tel. no. : (0062) 53 335-2600
fax no. : (0062) 53 335-2601
e-mail : opvisca@mozcom.com
website : www.lsu-visca.edu.ph

MANILA OFFICE

8 Lourdes Street, Pasay City
tel. no. : (0062) 2 521-2027; 525-6849

CEBU OFFICE

497-E Molave Street, Lahug, Cebu City
tel. no. : (0062) 32 232-8077; 232-8078