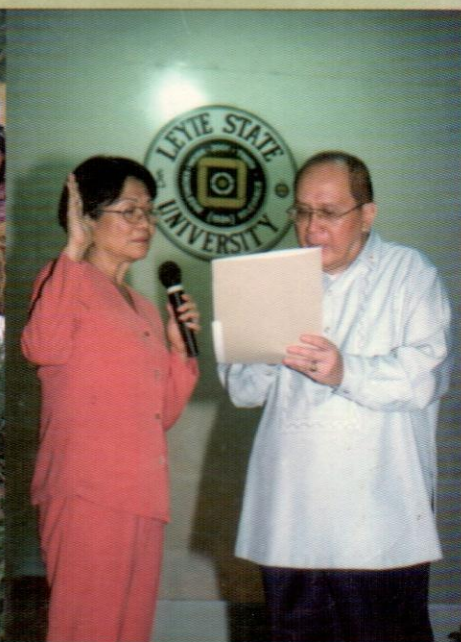
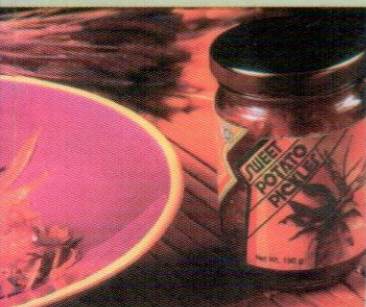
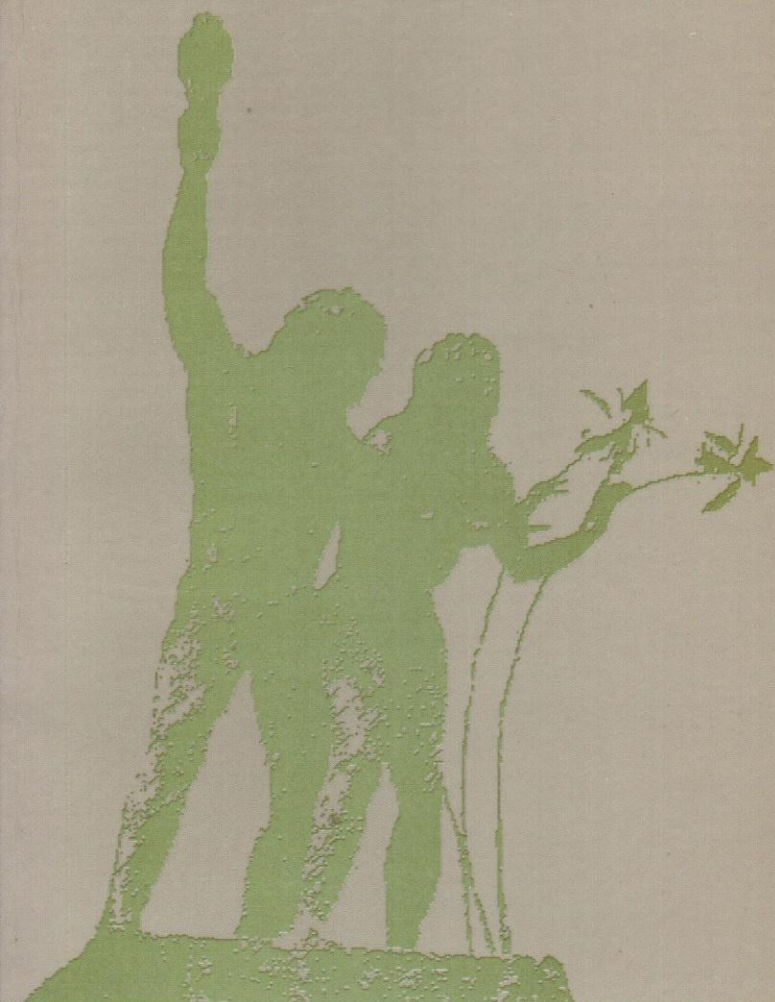
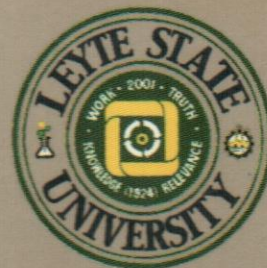


L S U

Visca, Baybay, Leyte  
Philippines



# Annual Report 2003



## *Vision*

LSU as center of excellence in education and research in agriculture and allied fields in the Visayas.

### **PANGLANTAW**

*Ang LSU mao ang sentro sa kahanas sa edukasyon ug pagpanukiduki bahin sa agrikultura ug sa ubang susamang pagtuon dinhi sa Kabisayaan.*

## *Mission*

Attainment of the highest quality of human capital and scientific knowledge for the sustained growth and development of agriculture, fisheries, forestry, and agro-industries.

### **KATUYOAN**

*Pagkab-ot sa pinakataas nga kalidad sa pagpalambo sa kahibalo ug kasinatian sa siyensiya alang sa tunhay nga pag-ugmad sa agrikultura, pangisda, kalasangan, ug mga industriyang pang-agrikultura.*





Leyte State University

6521 Visca, Baybay, Leyte, Philippines

Office of the President

• 3 JUNE 2004

**Her Excellency**

**President Gloria Macapagal-Arroyo**

Republic of the Philippines

Malacañan, Manila

*Through:*

**Dr. Carlito S. Puno**

Chairman, Board of Regents

Leyte State University

Madam:

May I have the honor to submit the Annual Report of the Leyte State University (LSU) for CY 2003.

This report summarizes the achievements of the University in line with its undying zeal and commitment to agricultural and rural development; and shows the unity and solidarity of its constituency in realizing institutional goals and objectives.

Let me convey my profound gratitude for your generous and continuing support to LSU's growth and improvement.

Very truly yours,

  
**PACIENCIA P. MILAN**  
President



# Foreword



**T**he Leyte State University (LSU) proudly presents its (year) 2003 accomplishments reflecting its initiatives, strategies, and approaches for institutional growth, as well as growing enthusiasm to effectively contribute to countryside development.

The Year 2003 saw LSU's increasing momentum in furtherance of its thrusts and programs. Despite various odds and financial limitations, the University made significant strides as evidenced by its noteworthy achievements and the commendable feat of its faculty, staff, students, and graduates. During the year, the University System crafted its five-year development plan with the involvement of its key officials. While quarrying for budget lift, LSU adapted contingencies and approaches in response to financial problems. It broadened institutional partnerships and intellectual exchange, sought opportunities for improvement of its facilities and enrichment of educational resources, and strengthened institutional policies for a more effective administrative operation. On top of all these, efforts were made towards continuous improvement of staff productivity, creativity, and work attitude.

LSU acknowledges that it has yet much to do to achieve countryside development goals. Hence, it shall strengthen further its resolve to become a more effective government partner for national development and upliftment of the capability of its citizenry.

  
**PACIENCIA P. MILAN**  
President



# Table of Contents

Highlights .....	01
Instruction .....	07
Research & Development .....	23
Extension .....	39
General Administration .....	51
Significant Events .....	61
Awards Received by Faculty & Staff .....	67
Publications .....	70
Officers of the LSU System .....	71



# Highlights

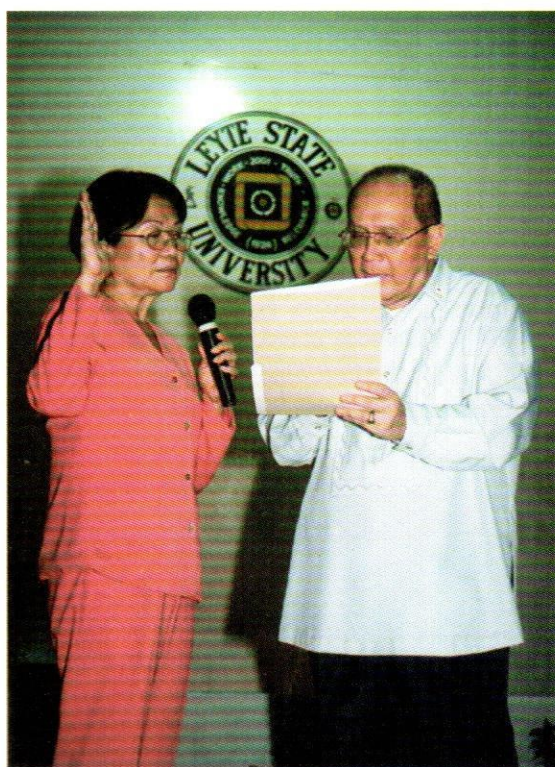
This year, 2003, was a fulfilling year for the Leyte State University (LSU) in its pursuit for excellence in agriculture.

LSU was named by the Professional Regulation Commission (PRC) as the **Second Best Performing Agricultural School** in the country in view of its graduates' performance in the first licensure examination for agriculturists conducted on July 7-9, 2003 in which it obtained an institutional passing percentage of 64.04. It also received from the Board of Foresters of PRC a *Certificate of Recognition* as **Second Best Forestry School** in the country.

The Office of the President-Youth Affairs of Malacañang identified LSU as one of its partners in reaching out and providing assistance to the youth in the province of Leyte during a consultation and dialogue on February 3, 2003 at LSU.

The German Government, through the German Foundation for Development (GTZ), donated 1.4 million pesos for equipment and laboratory supplies while the Philippine Council for Agriculture, Forestry and Natural Resources Research and Development (PCARRD) initially put up two hundred thousand pesos (P200,000.00) for the establishment of LSU's diagnostic laboratory for plant diseases.

Incumbent LSU President, Dr. Paciencia P. Milan, was reappointed to her post by the LSU Board of Regents during the 12<sup>th</sup> BOR meeting on July 9, 2003.



Dr. Paciencia P. Milan, re-appointed LSU President, is sworn into office by Bro. Rolando R. Dizon, chairman of CHED and LSU Board of Regents.



Dr. Paciencia P. Milan, LSU President (4<sup>th</sup> from right), poses with PRC officers after receiving the certificate accorded to LSU as the *Second Best Performing Agricultural School* in the country.





The 2003 Ugnay Award Trophy and Certificate received by VICARP.



LSU took the lead role in the program of the Department of Education (DepEd) against illiteracy in view of the appointment of Dr. Paciencia P. Milan as chairman of the Regional Literacy Implementing Council (RELIC) of Region 8 on February 10, 2003.

The Department of Science and Technology-Technology Application and Promotion Institute (DOST-TAPI) authorized the University to implement projects under the Small Enterprise Technology Upgrading Program-DOST-Academe Technology-Based Enterprise Development (SETUP-DATBED) and signified to fund pre-selected small enterprise project proposals of LSU students that utilize LSU's existing technologies.

The Visayas Consortium for Agriculture and Resources Program (VICARP), with its Secretariat based at LSU, won the **2003 Ugnay Award** as the Outstanding Research and Development Consortium in the entire Philippines on November 10, 2003. The award carried with it a P1-million peso grant and a plaque of recognition from PCARRD.

The LSU Infirmary was identified by the Leyte Provincial Health Office as a screening center for detecting cervical cancer.

The LSU Laboratory High School (LHS) received a *Certificate of Recognition* from the National Statistics Office at PICC, Pasay City on December 2, 2003 as "a secondary school that provides strong and solid foundation in mathematics and statistics."

The LSU Seed Network (SeedNet) successfully produced a new rice variety called **Mestizo** which can produce seeds from 8.0 to 10.0 tons per hectare and has a very good eating quality as it is white, soft, and slightly sticky and has an aromatic smell.

LSU Radio DYAC received a 10-KW medium-wave transmitter donated by the Deutsche Welle Radio Training Centre in Cologne, Germany through its director, Mr. Frank Lemke.

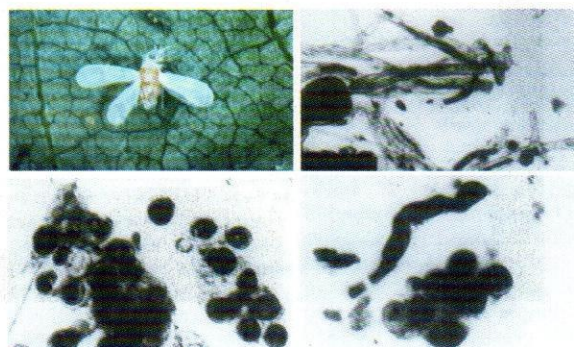
Dr. Lina T. Villacarlos, entomologist and professor of the Department of Pest Management, with the assistance of Ms. Belen S. Mejia, science research assistant, and Dr. Siegfried Keller, scientist of the Swiss Federal Research Station for Agroecology and Agriculture in Switzerland, discovered a new species of fungus called *Entomophthora leyteensis* which can infect the whitefly *Tetraleurodes acaciae*, a common pest of *Gliricidia sepium* in the Philippines.



Dr. Rodrigo F. Sebidos (left), in-charge of the seednet project, shows the hybrid rice (Mestizo).



LSU Radio DYAC technical staff and Engr. Wilfredo Ulang of the DW Radio Training Center, Germany pose in front of the 10-KW medium-wave transmitter donated by the Deutsche Welle Radio Training Center (DW) in Cologne, Germany.



Infected adult whitefly (top, left); close-up of rhizoids from the head region with extension at the tip (top, right); sub-spherical hyphal bodies and young conidiophore (bottom, left); primary conidia with one forming secondary conidium (bottom, right).





## INSTRUCTION

Four LSU graduates emerged topnotchers in the different licensure examinations. In the Licensure Examination for Doctor of Veterinary Medicine, **Rachel G. Po**, and **Santiago T. Peña, Jr.**, copped 2<sup>nd</sup> and 3<sup>rd</sup> places, respectively and LSU attained an institutional passing percentage of 48.27. In the Licensure Examination for Agricultural Engineers, **Francis L. Collado** and **Jeffrey Lloyd L. Cagande** led the LSU examinees who all passed the examination (100% institutional passing) by copping the 4<sup>th</sup> and 7<sup>th</sup> places, respectively.

The LSU Main Campus launched two new graduate courses, one undergraduate, and one diploma course. These are the MS Rural Sociology (MSRS), MS Tropical Ecology (MS Tr Ec), BS in Geodetic and Geomatics Engineering (BSGGE) and Certificate Course in Geodetic and Geomatics Technology (CGGT). The College of Environmental and Agricultural Technology (CEAT) - LSU Alangalang Campus likewise started offering the BS in Environmental Management (BSEM).

Curricular revisions and inclusion of CHED-mandated courses were made to strengthen further LSU's undergraduate programs in accord with the current national and regional thrusts.

## RESEARCH AND DEVELOPMENT

Despite financial constraints, LSU made significant strides in agricultural R & D. It implemented 173 research and development projects during the year, of which 163 were ongoing and 10 were newly conducted.

Research ventures successfully dished out valuable information and spurred the development of new value-added products as the University's contributions to the economic development of Region 8 and the national agricultural system:

- The Philippine Root Crop Research and Training Center (PhilRootcrops) based at the LSU Main Campus developed four new rootcrop varieties and these were approved and released by the National Seed Industry Council (NSIC) for national adoption. The rootcrop varieties include cassava: NSIC CV-23 (OMR 33-12-3) and NSIC CV-24 (OMR 33-12-7); sweet potato: NSIC Sp-26 (JK 024); and ubi/yam: NSIC U-6 (LA-155).

Topnotchers in the different licensure examinations: Doctor of Veterinary Medicine - Rachel G. Po (left photo), and Santiago T. Peña, Jr. (left most, center photo); and Agricultural Engineer - Jeffrey Lloyd L. Cagande (middle, right photo) receive recognition.



The newly approved rootcrop varieties of PhilRootcrops.





The germplasm collection of NARC (top); PhilRootcrops (middle); and NCRC-V (bottom).

- PhilRootcrops and the National Abaca Research Center (NARC) continued to enrich their respective germplasm collections by obtaining additional plant accessions; making a total of 2,015 rootcrop accessions and 754 abaca accessions in their collections.
- The LSU Geographic Information System (GIS) and the Department of Agronomy and Soil Science (DASS) developed and produced the first draft of two soil maps of Leyte based on modern classification systems (USDA Soil Taxonomy and IUSS World Reference Base).
- The different research centers of LSU developed and/or improved several post-harvest processing machines for abaca – pulping machine, twisting machine, and twining machine; and root crops – grater machine and spinner machine.

## EXTENSION

LSU's research centers, colleges, departments, and institutes also performed their respective extension services, which include as follows:

Technical services through trainings, lectures, briefings, capability building, management clinic, pest clinic, animal health clinic, data analysis and interpretation, consultations, laboratory analyses of plant and soil samples, entrepreneurial skills development, etc.

Other extension activities such as showcasing of technologies through the exhibits maintained at the LSU Main Campus and off-campus agri-industrial fairs and exhibits, herbarium and botanical garden, arboretum, pesticidal and medicinal garden; distribution of planting and communication materials for free or at minimal cost; and fabrication and distribution of processing machines.

Three technologies, namely: SP Pickles, Cassava Cookies and Cassava Flour and Grates, were approved for promotion and commercialization by the LSU-Land Bank of the Philippines Technology Promotion Center (LSU-LBP-TPC) with a total budget of P433,728.33.

## AWARDS AND RECOGNITION

Some LSU staff and researchers obtained awards for their commendable performance in teaching and research not only from the University but also from various local, regional, national, and international agencies/institutions:

**International Award.** One faculty member received the International Publication Award from the *Philippine Agricultural Scientist* for her undergraduate thesis and another faculty member received a *Certificate of Merit* from The Vetiver Network, USA for establishing the Vetiver Network in the Philippines.

**Professorial Chair.** Two LSU faculty members in food science and horticulture were granted professorial chairs by the Philippine Agriculture and Resources Research Foundation, Inc. (PARRFI).



**National Awards.** Thirteen faculty members and researchers received awards from national agencies/organizations: DA Secretary's Award for Research (Published Category) - 3; Best Paper Award (Irrigation, Soil and Water Resources Category and Post-harvest Handling, Processing and Management Category) - 2; M.S. Swaminathan Outstanding Research Award - 1; *Tuklas* Outstanding Utility Model Award - 1; *Likha* Outstanding Creative Research Award - 1; Best Ph.D. Thesis Finalist Award - 1; and as research advisers - 2.

**Regional Award.** Thirty-seven faculty members and researchers received research awards from regional agencies: VICARP - 31; DA-RFU - 2; Secondary Schools Press - 1; CSC RO 8 & CSC LSP MDC - 1; CHED RO 8 - 1; and POSTE - 1.

**Institutional Award.** Ten academic and administrative personnel of the main campus received different awards from the University during its founding anniversary. Likewise, five personnel of the LSU-Alangalang Campus received awards during the founding anniversary of their college.

## ALUMNI SUPPORT

During the year, LSU alumni who were studying or working in Japan donated a personal computer system and a computer table and chair to the Alumni and Community Relations Office (ACRO) of the LSU Main Campus. Other alumni also donated to the office a second hand printer, a fax machine, and payment for the monthly telephone bills; and an alumnus donated a printer and scanner to the University Library.



Some of the alumni donors of the computer system to the Alumni & Community Relations Office (ACRO).



LSU President, Dr. Paciencia P. Milan, shakes hands with Prof. Dr. Gerd Luer after the signing of a memorandum of understanding, while Dr. Ester A. Garcia (left), former chairman of CHED, looks on.



## LINKAGES

The Leyte State University continued to receive research and development project support fund and financial assistance for faculty and staff development, acquisition of facilities and equipment, exchange of technology information, project coordination, and travel grant from the different international/national institutions and agencies.

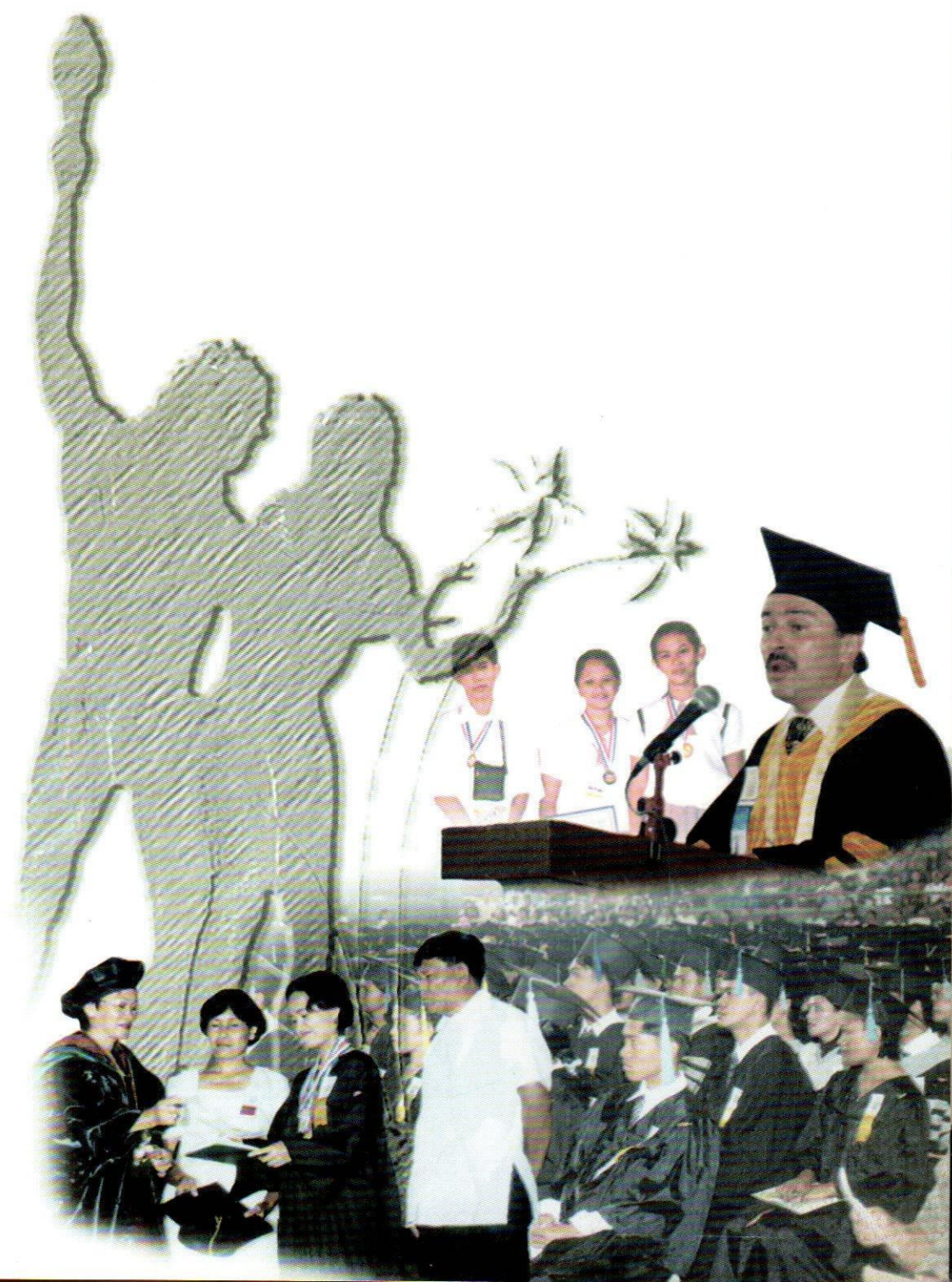
During the year, LSU formalized agreements with the following international institutions: Georg-August University in Goettingen (UG), Germany - on scientific exchange to promote teaching and research collaboration in forestry and forest genetic resource conservation; and Centro Internacional de Agricultura Tropical (CIAT), Colombia - for the advanced training of LSU staff and graduate scholars as well as working together to develop agricultural technologies for upland farming and sharing of information and expertise.

The University likewise forged collaborations with the following local government agencies: Department of Environment and Natural Resources (DENR) and the Local Government Unit of Mahaplag - for the implementation of the "Assisted Natural Forest Regeneration, Rainforestation and Agroforestry Project" in a 198-hectare land at Brgy. Hiluctugan, Mahaplag, Leyte; Department of Agrarian Reform (DAR), University of Eastern Philippines, Department of Agriculture (DA), Land Bank of the Philippines (LBP), Department of Trade and Industry (DTI), Department of Science and Technology (DOST), Cooperative Development Authority (CDA), and Technical Education and Skills Development Authority (TESDA) - establishment of Farmers Bayanihan Center for Rural Development (FBCRD) in LSU and UEP; Consuelo Foundation, Inc. - for the implementation of the project "Alternative Learning System for Rural Out-of-School Youth in Western Leyte"; and Manchem Industries, Inc. - on testing the effect on rootcrops of Biozome S-200, a micronutrient fertilizer, on rootcrops.



# Instruction

In line with its mission of *"attaining the highest quality of human capital and scientific knowledge for the sustained growth and development of agriculture, fisheries, forestry, and agro-industries,"* the University continued to improve its instructional programs to conform to the current and future needs of the country, in general and the region, in particular.







The leaflet on LSU's programs and curricular offerings.

## Curricular Offerings

### Graduate Program

The graduate courses, namely: MS Rural Sociology (MSRS) and MS Tropical Ecology (MS Tr Ec), proposed by the Institute for Strategic Research and Development Studies (ISRDS) and Institute of Tropical Ecology (ITE), respectively, were approved by the LSU Board of Regents (BOR) on December 2, 2003 for offering effective first semester of SY 2004-2005.

### Undergraduate Program

The Bachelor of Science in Geodetic and Geomatics Engineering (BSGGE) was offered at the Main Campus effective first semester SY 2003-2004 per BOR Resolution No. 5 series 2003.

The Bachelor of Science in Environmental Management (BSEM) was offered at the College of Environmental and Agricultural Technology (CEAT)-LSU Alangalang Campus effective first semester of SY 2003-2004.

### Non-Degree Program

The Certificate Course in Geodetic and Geomatics Technology (CGGT) was offered at the Main Campus effective 1<sup>st</sup> semester SY 2003-2004.

### Secondary Education Program

The agricultural science curriculum of the LSU Laboratory High School was implemented effective June 2003 per BOR Resolution No. 33, Series of 2003.

## Curriculum Development

### Graduate Program

The Department of Biological Sciences (DBS) prepared and submitted to the Graduate School proposals to offer seven (7) courses under the Master of Education program of the College of Education: Biol 282 - Developmental Biology; Biol 286 - Field Biology; TREC 201 - Biological Diversity; TREC 205 - Natural Resource Management and Conservation; Biol 295 - Marine Bioremediation; Biol - 141 - Introduction to Biosystematics; and Ecol 181 - Biogeography.

The Department of Biological Sciences (DBS) proposed the offering of a minor field in Aquatic Ecology under the newly approved program in MS Tropical Ecology, with six (6) graduate courses: Marine Microbiology, Marine Toxicology, Marine Bioremediation, Integrated Coastal Management, Aquatic Ecological Techniques, and Aquatic Ecological Assessment and Monitoring.



The Department of Food Science and Technology (DFST) prepared an expanded course syllabi for the following graduate courses: FTEC 241 (Dehydration Processes), FTEC 221 (Food Biochemistry), FTEC 242 (Thermal Studies), FTEC 256 (Baking Technology), and FTEC 231 (Advanced Food Microbiology).

The Department of Genetic Resources and Plant Breeding submitted a proposal to offer MS in Plant Breeding to the Graduate School.

The Ph. D. program of the Department of Animal Science was evaluated and new approaches were integrated, such as linking with other colleges and universities to have greater exposure of the students and make the program more research-oriented.

## Undergraduate Program

The 5-unit Math 13 (College Algebra and Trigonometry) to replace Math 11 (College Algebra) and Math 12 (Plane Trigonometry) in the BS Agricultural Engineering (BSAE) curriculum was implemented effective first semester of SY 2003-2004.

The proposal to revise the BSAB curriculum of the Main Campus, to provide thesis and non-thesis options, was submitted to the University Board of Regents (BOR).

The revised BS Food Technology curriculum was implemented effective first semester of SY 2003-2004 to the first year BSFT students.

The revised six-year Doctor of Veterinary Medicine curriculum accommodating the CHED-mandated courses and TPAE requirements was approved by the LSU BOR for implementation effective first semester SY 2003-2004.

Two units were deducted from the total number of major courses in the newly revised BSA curriculum with major in Horticulture. Moreover, Horticulture 121 (Plant Propagation and Nursery Management) was changed from an elective to a required course, while Horticulture 112 (Plantation Crop Production and Management) was changed from a required to an elective course.

The proposed BS Statistics curriculum revision was discussed by the College of Arts and Sciences (CAS) Curriculum Committee.

The final draft of the proposed Bachelor of Animal Science (BAS) curriculum revision was reviewed and polished at the department level for submission to the University Curriculum Committee.

The proposal to revise the BS in Home Economics curriculum and offer BS in Hotel and Foodservice Management was approved by the Department Curriculum Committee.

The Department of Community Development Education conducted a workshop to revise the BSADE - Agricultural Extension curriculum, with participation of an invited professor from the University of Southern Mindanao, agricultural technologists from LGU, and agricultural technicians



from NGOs. Among those discussed during the workshop were the need to offer Community Development as another major field and the possibility of offering a Ph.D. program in Rural Development Management.

## Enrolment Profile

During the 1<sup>st</sup> semester of school year 2003-2004, the LSU Main Campus had a total enrolment of 4,277 students. This was composed of 258 graduate students (14 Ph.D., 244 MS/MAgDev/M.Ed); 3,970 undergraduate students; and 49 students in the non-degree program (Table 1).

The LSULHS had a total enrolment of 499, composed of 202 boys and 297 girls.

**TABLE 1. MAIN CAMPUS STUDENT ENROLMENT BY DEGREE, FIRST SEMESTER SY 2002-2003 AND SY 2003-2004**

COURSE	1 <sup>st</sup> Semester 2002-2003	1 <sup>st</sup> Semester 2003-2004
GRADUATE		
PhD	21	14
M. S.	121	115
M. Ag. Dev.*	126	124
M. Ed.	7	5
SUB-TOTAL	275	258
UNDERGRADUATE		
Doctor of Veterinary Medicine (DVM)	191	253
Bachelor of Animal Science (BAS)	372	345
BS in Agriculture (BSA)	548	503
BS in Agribusiness (BSAB)	585	589
BS in Agricultural Chemistry (BSAC)	41	30
BS in Chemistry (BSC)	34	46
BS in Agricultural Engineering (BSAE)	176	143
BS Geodetic & Geomatics Engineering (BSGGE)	Not yet offered	31
BS in Agricultural Development (BSAgDev)	61	61
BS in Agricultural Education (BSAgEd)	463	221
BS in Development Communication (BSDC)	137	148
BS in Food Technology (BSFT)	146	156
BS in Forestry (BSF)	164	164
BS in Home Economics (BSHE)	310	243
BS in Statistics (BSS)	103	96
BS in Biology (BSBio)	164	167
BS in Computer Science (BSCS)	70	107
Bachelor of Secondary Education (BSEd)	94	166
Bachelor of Elementary Education (BEEd)	204	501
SUB-TOTAL	3,863	3,970
NON-DEGREE		
Home Economics Technician (HET)	49	49
SECONDARY EDUCATION	489	499
GRAND TOTAL	4,676	4,776

\* Extramural enrolment is included



## Graduates

A total of 642 students graduated during the 50<sup>th</sup> Collegiate Commencement Exercises of the LSU Main Campus, and this included 26 students in the graduate degree program (3 Ph.D., 14 MS, 8 MAgDev, 1 MEd); 610 in the undergraduate degree program (198 BSAGEd, 84 BSA, 76 BSHE, 74 BSAB, 62 BAS, 24 BSF, 23 DVM, 19 BSS, 17 BSDC, 12 BSFT, 11 BSAE, 7 BSAGDev, and 3 BSAGChem); and 6 in the non-degree program. Thirty-nine (39) marched with academic honors, which included 4 *Magna Cum Laude*, 34 *Cum Laude*, and 1 *With Honors*.

The LSULHS turned out 81 graduates during its 73<sup>rd</sup> Commencement Exercises and two (2) marched "*With Highest Honors*," three (3) "*With High Honors*," and 23 "*With Honors*."

## Scholastic Performance

### Scholarships and Financial Assistance

Twenty (20) graduate students enjoyed scholarships granted by the following agencies: DA-BAR - 5, FIDA - 1, and SPREAD - 14; and 17 Teaching/Research Assistantships (GTA/GRA) from LSU and research projects (GTA-14 and GRA - 3).

For the whole year (1<sup>st</sup> & 2<sup>nd</sup> Semesters and Summer), a total of 1,429 undergraduate students enjoyed scholarships/grants from LSU - 235, LSU grants-in-aid - 654, and other agencies -540.

One hundred forty-six (146) high school students enjoyed LSU scholarships: Full - 10, Partial - 107, and Honorific - 29. Poor but academically deserving students who had no scholarship were prioritized for student assistantship at a rate of P10.00 per hour of work.

### Honors and Awards

The following cream of the crop received special awards during the 50<sup>th</sup> Collegiate Commencement Exercises of the LSU Main Campus:

- Sarah A. Doydora (*Magna Cum Laude*) - *LSU Presidential Award of Academic Excellence*, *Pres. Gloria Macapagal-Arroyo (PGMA) Academic Achievement Award*, *Sen. Manuel B. Villar, Jr. Excellence Award*, and *Breeders Award of Excellence*.
- Adrian P. Ybañez (*Cum Laude*) - *PGMA Leadership Award*, *Gov. Remedios L. Petilla Award for Most Outstanding Student*, and *Pacifica Award of Excellence*.
- Ryan Max T. Dueñas (*Cum Laude*) - *DOST Award for Academic Excellence in Science*.
- Juvia P. Sueta, Angelie Rose C. Leyes, Daisy Mae D. Apilar, Cherry A. Endino, Aiko Theresa O. Landerito, Ivy Grace F. Quirol, Renila M. dela Piza, Jedi Joy G. Belmonte, Charito Luluh L. Arpilleda, Paul Martin A. Gapuz, and Pet Roey L. Pascual - *Breeders Award of Excellence*.

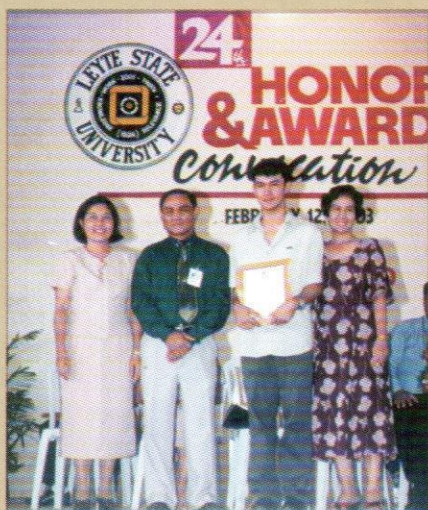


The 2003 graduates.



Sarah A. Doydora, *Magna Cum Laude*, receiving her awards during the 50<sup>th</sup> Commencement Exercises.





Dr. Corazon B. Batoy, Dean of Students; and Dr. Jose M. Alkujino, Jr., Vice President for Administration and Finance, pose with student-awardee, Ryan F. Barcelo and his mother (top) and Ruel R. Sanchez with Dr. Jose L. Bacusmo, Vice President for Research and Extension (bottom), during the Honors and Awards Convocation on February 12, 2003.



The gold medalists during the 2003 Regional SCUAA Games at Palompon, Leyte, (left) tennis (women) and (right) Tae Kwan Do-Feather Weight Division.

## Students' Achievements

### Main Campus

Two college students, namely: Ryan F. Barcelo and Ruel R. Sanchez, were given *Leadership Award* and *Endeavor Award*, respectively, during the Honors and Awards Convocation on February 12, 2003.

- ✓ Veterinary Medicine students composed of Adrian Ybañez, Rachel Po, and Dorrel Sorenio got 2<sup>nd</sup> place in the 15<sup>th</sup> National Veterinary Quiz Contest held on February 12, 2003 at UP Los Baños by the Venerable Knight Veterinarian Fraternity.

The following BSFT students won in different competitions:

- ✓ Onofre B. Betonio III, Ma. Lot. Bantaculo, Mary Ann De la Cruz, Nathalie Sansan and Kristine Velarde, 1<sup>st</sup> place in Cassava Flour/Grates Product Development Category; and Francisco Gabucan, Glenda Golosino, Analiza Felisilda, Marites Cutaran, and Anna Ria Baja, *Special Product Award* – in the food product competition during the LSU anniversary on August 9, 2003.
- Leizel Tejada, Roderic Perez, Michelle Aguirre, Jemma Mata, and Rodney Perez, 1<sup>st</sup> place for product development (cassava pudding), given by the Department of Food Science and Technology (DFST) in August 2003.
- ✓ C1Lt. Eva Marie de los Reyes, sophomore BS Chemistry student of LSU and Region 8's bet for the 4<sup>th</sup> National Philippine Army ROTC Speech Contest held at the San Sebastian College-Recoletos in Manila on September 13, 2003, won the tilt as the grand champion. She received a trophy, cash prize, and complete set of army uniform.
- ✓ Angelo Jay M. Noriel, a freshman BS in Agriculture student, won the 2003 Philippine Statistics Quiz (PSQ)-Regional Finals held at the NEDA Regional Office in Candahug, Palo, Leyte on November 14, 2003. As regional winner, he represented Region 8 in the 12<sup>th</sup> PSQ National Finals in Manila.

BAS students won 5<sup>th</sup> place in the National Rodeo and emerged as national champion in Cattle Lassoing on Foot on April 6-10, 2003 in Masbate City.

The following LSU varsity players won during the 2<sup>nd</sup> *Sangguniang Kabataan* (SK) Badminton Cup in Ormoc City on October 4 and 11, 2003: Rea Javier - champion, and Catherine Cuizon - 3<sup>rd</sup> place, badminton women's singles; Cristina Macabenta - 3<sup>rd</sup> place, women's doubles; and Brian Kristofer Ternura and Lee Modina - 2<sup>nd</sup> place, men's doubles.

During the Regional SCUAA Games 2003 held at Palompon Institute of Technology (PIT), Palompon, Leyte, LSU Main Campus students won in various games: gold - football, tennis (women), Tae Kwan Do (Welter Weight and Feather Weight Divisions); silver - volleyball (women), badminton (men), athletics (100 m dash); and bronze - tennis (men), badminton (women), Tae Kwan Do (Bantam Weight Division).



Likewise, the following LSULHS students won in different national, regional, and local competitions:

- Jeela Acedo, April Rose Fulache, and Ryan Beverlo Pascual - grand prize, basic sciences/science high school/team category, for their study "Embryo Splitting in In-vitro Cultured Makapuno (*Cocos nucifera* L.), presented during the 2002-2003 Intel Philippines Science Fair National Level Competition at UP Diliman, Quezon City on February 18-20, 2003.
- LSULHS contestants - 1<sup>st</sup> place in the Radio Broadcasting Contest held during the Secondary Schools Press Conference at Baybay National High School, Baybay, Leyte on November 4-5, 2003.
- Emilee C. Fernandez, Archee Ann G. Filipino, and Jayson V. Godoy - Outstanding Research Paper for Secondary Level during the 6<sup>th</sup> Annual Convention Seminar-Workshop of the Philippine Organization of Science and Technology Educators (POSTE) of Region 8 on November 21-22, 2003 at the Leyte National High School, Tacloban City. Their research was "In- Vivo Studies on Local Plant Materials as Potential Control of Dengue" with Dr. Edgardo E. Tulin as their adviser.
- Stephen Alexeus Baltazar - 1<sup>st</sup> place in Copyreading and Headline Writing Contest and 1<sup>st</sup> place in the Extemporaneous Speaking Contest during the Regional Secondary Schools Press Conference held at Naval Central Elementary School, Naval, Biliran on November 26-28, 2003.
- During the Regional Intel Philippine Science Fair (IPSF) 2003 held on December 8-9, 2003 at the Leyte Institute of Technology, Tacloban City, the following students won in the different contest categories: Jeella Z. Acedo - 1<sup>st</sup> place in the Life Science (Individual Category); Francis Ariel R. Gapasin, Emil Joseph O. Carreno, and Ma. Fe Novere C. Avangelio - 1<sup>st</sup> place in the Life Science (Team Category); Jomar Rey O. Escasinas, Tolomeo V. Fernandez, Jr., Ansel Mike P. Lambert, and Franz Roland S. Valenzona - 3<sup>rd</sup> place in Life Science (Team Category); Stephen Alexeus G. Baltazar, James F. Bellezas and Paul Winston W. Tabada - 1<sup>st</sup> place in the Physical/Applied Science (Team Category); Reyman Alistair G. Loreto, Clark B. Macariola, and Annie Amor R. Robin - 2<sup>nd</sup> place in Physical/Applied Science (Team Category).



Intel Philippines Science Fair grand prize winners: Jeela Z. Acedo, April Rose Fulache, and Ryan Beverlo Pascual, show their medals and certificates.



The LSU-Tolosa Campus student publication, "The Dolphin."

### Satellite Campuses

Feilmer P. Gomez, CSSC President of the College of Fisheries - LSU Tolosa Campus was elected first president of the University Supreme Student Council (USSC) and tasked to represent the LSU studentry in the Board of Regents (BOR).

Thirty-three (33) students of the College of Agri-Industrial Technology (CAIT) - LSU Isabel Campus received certificates as College Honors for obtaining a GPA of 1.75-1.45 during the 1<sup>st</sup> Honors and Awards Convocation on March 4, 2003. Given special awards were Joan C. Manatad - *Leadership Award*, and Michael V. Cometa - *Endeavor Award*.

"The Dolphin," a student publication of the LSU Tolosa Campus, was adjudged as *Most Outstanding School Publication* during the 2003 Regional Tertiary Schools Press sponsored by the Commission on Higher Education -



Region 8 on November 28-29, 2003 at the DZRMES, Tolosa, Leyte. Individual awardees during the affair were:

- Edgardo M. Mendiola - *Journalist of the Year*, 1<sup>st</sup> place in Desktop Publishing in both English and Filipino.
- Sally H. Olino - 2<sup>nd</sup> place in Sports Reporting in both English and Filipino.
- Cyril E. Ocaña - 2<sup>nd</sup> place in Investigative Journalism (Filipino) and 3<sup>rd</sup> place in English News Writing

## Professional Licensure Examination Performance

LSU Main Campus graduates performed well in the 2003 Professional Licensure Examinations with two topnotchers for Doctor of Veterinary Medicine (2<sup>nd</sup> and 3<sup>rd</sup> places) and two for Agricultural Engineers (4<sup>th</sup> and 7<sup>th</sup> places) (Table 2). The University was likewise named by the Professional Regulation Commission (PRC) as the *Second Best Performing Agricultural School* in view of its graduates' performance in the first licensure examination for agriculturists conducted on July 7-9, 2004, giving LSU an institutional passing percentage of 64.04

**TABLE 2. PASSING RATE AND NUMBER OF TOPNOTCHERS IN PROFESSIONAL LICENSURE EXAMINATIONS**

EXAMINATION	Date of Examination	Top 10 Rank	Institutional Percentage	National Percentage
Veterinary Medicine	July 29-31, 2003	2 <sup>nd</sup> & 3 <sup>rd</sup>	48.27	37.33
Agricultural Engineer	July 17-18, 2003	4 <sup>th</sup> & 7 <sup>th</sup>	100.00	38.00
Foresters	June 17-18, 2003	-	33.70	47.00
Chemists	Sept. 9-11, 2003	-	33.00	42.00
Teachers	Aug. 31, 2003	-	58.89	34.30
Agriculturists	July 7-9, 2003	-	64.04	22.18



Dr. Paciencia P. Milan, LSU President and Dr. Emma S. Data, Head of the University Review Center (3<sup>rd</sup> and 4<sup>th</sup> from right), pose with successful examinees in the licensure examination for agriculturists.



# Student Welfare

## Guidance and Counseling Services

The Guidance and Counseling Services Section of the Office of Student Affairs (OSA) upgraded the competencies and enriched the experiences of department-based guidance facilitators, counselors, and campus ministers through echo seminars and regular meetings; sent staff and affiliates as well as student leaders to off-campus seminar workshops, trainings and conferences; and maintained linkages with government and private agencies for job placement of graduates.

OSA likewise administered admission and qualifying examinations to incoming college freshmen and interpreted examination results; and conducted psychological tests to various students for vocational guidance.

## Student Housing

Repair and renovation of dormitories and cottages, and fabrication of furniture were done to improve student housing facilities.

## Student Lounge and Recreation Center

The Student Lounge accommodated 2,339 clientele in organizational and recreational activities.

## Student Organizations

OSA recognized 51 student organizations during the year, and these include: 21 course-related organizations, 7 service organizations, 10 religious organizations, 8 regional/civic groups, and 5 interest groups. It also approved a total of 726 varied activities such as programs, parties, sports, and meetings of the different student organizations.

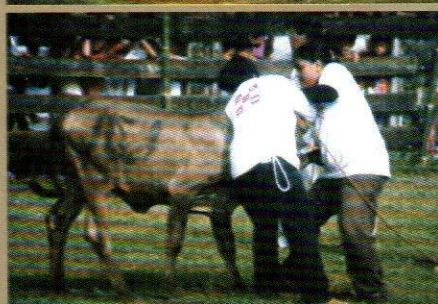
The following awards were accorded by OSA to outstanding student organizations during the annual Honors and Awards Convocation on February 12, 2003:

- *Course-Related Organization of the Year Award:* Veterinary Students' Society (VetSS) - 1<sup>st</sup> place; Development Communication Society (DECSO) - 2<sup>nd</sup> place; and ViSCA Chemical Society (ViChemSo) - 3<sup>rd</sup> place.
- *Service Organization of the Year Award:* Theta Psi Lambda Fraternity and Sorority - 1<sup>st</sup> place, and Tau Gamma Phi Triskelion Grand Fraternity and Sorority - 2<sup>nd</sup> place.
- *Interest Group of the Year* - BANAAG Visual Arts Group



College freshmen and transferees during the general orientation program.





LSU students' activities (from top to bottom) volleyball and dance "palabas" during the students' sportsfest; rodeo during the LSU anniversary; anti-rabies vaccination by the Veterinary Medicine students.

## Student Activities

Twenty-eight (28) graduate students attended the seminar on "Outline-Manuscript Preparation" conducted by the Graduate School.

The different student organizations conducted varied activities such as tutorial, charity work, quiz show, dog show, rodeo, tree planting, anti-rabies vaccination campaign, fund raising, educational trip, sports fest, skills demonstration, bio-medical services like blood typing and measurement of blood pressure, social activities; sponsored the construction of concrete benches around the pili trees; and attended trainings and seminars. (Table 3).

**TABLE 3. ACTIVITIES OF THE DIFFERENT STUDENT ORGANIZATIONS, SY 2003-2004**

ORGANIZATION	ACTIVITIES UNDERTAKEN	AWARD
Veterinary Student Society (VSS)	Dog show, rodeo, Phil-Veterinary Week, anti-rabies vaccination campaign, <i>alay linis</i> , stray dog catching	1 <sup>st</sup> Place Course-Related Organization
Development Communication Students Society (DECSO)	Acquaintance and induction program, review and training of BSDC freshmen in answering questions during the interview and screening, assisted in the conduct of screening for BSDC freshmen and orientation, feeding program in cooperation with BIDANI and HES, rummage sale, assisted the Culture and Arts Center and Socio-Cultural Affairs Committee in the production of Miss LSU 2002 beauty pageant, assisted the committees on <i>Pinaka</i> -Contest and raffle draw, and <i>alay linis</i>	2 <sup>nd</sup> Place Course-Related Organization
Visca Chemical Society (ViChemSo)	Annual Chemistry Week celebration, orientation program, acquaintance party/induction of officers, <i>alay linis</i> and papaya planting, tutorial sessions, freedom love board, talk show on fundamentals of love, poster making contest, intraschool Chem quiz show, Chemistry games, Chem mysteries, quest for the largest termite, a day with the less fortunate children, white gift giving, giving of papaya seeds	3 <sup>rd</sup> place Course-Related Organization
Ag. Economics Majors Student Society (D'AGEMSS)	Acquaintance and induction program, junior orientation, booth making, tutorials, <i>alay linis</i> , Christmas party, and sponsored the construction of concrete benches under the pili tree and in-front of the building	
Society of Agribusiness Students (SABS)	SAVALEX fund raising, <i>alay linis</i> , acquaintance/Christmas party, tribute/get-together, booth making, educational trip, tutorial services	
Phil. Association of Food Technologists - Kappa Student Chapter (PAFT-KSC)	General meeting, acquaintance party, quiz show, <i>alay linis</i> , booth making, selling of DFST food products, screening of products for product development contest, convocation, printing and attaching of environmental messages to DFST food products, established and managed Food Processing Information Center, refined and submitted entries of 7 recipes of rootcrop flour and grates, recipe formulation and cost determination, demo on processing and frying of kabkab and cassava chippy, preparation and selling of yellowbooks, maintained and operated the PAFT Mini Library, attended seminars on how to make expanded syllabi and how to perform well in interview, attended training on Excel Program, assisted in VEAM rummage sale, co-sponsored the Food Science and Technology Week	



ORGANIZATION	ACTIVITIES UNDERTAKEN	AWARD
PSAE - Student Chapter	Tutorial classes in Physics and Mathematics	
Home Economics Society (HES)	Acquaintance/induction party, conducted mass feeding of preschoolers and lecture on breastfeeding to mothers, cooking demonstration and Nutriquiz to women in Brgy. Pangasugan, assisted in distributing snacks during the Farmer's Field Day, celebration of HES week, general cleaning of the department and its surroundings, planting of fruit and other perennial trees, and rehabilitation of culinary and medicinal herb garden	
Society of Animal Science Students (SASS)	Co-sponsored the Rodeo competition	
Visca Horticultural Society (ViHOS)	Co-sponsored flower and garden shows, tree planting, honing of skills in asexual propagation of horticultural crops, socio-cultural activities	
Asso. of Plant Brdg. Majors (APBM)	Acquaintance and induction party	
Mentors' Guild (formerly FFPCC)	Monthly clean and green activities; acquaintance party; tutorial activities; attended seminar and national convention; sports fest; quiz, Christmas art festival; organized Knights of Rizal in the College level	
AES	Assisted in serving snacks to farmers during the LSU anniversary	
Organization of Biology Students (OBioS)	Bio quiz; fire protection symposium; rebottling of ; specimens bio-medical services (blood typing, measurement of blood pressure); <i>alay linis</i> ; co-sponsored the VEAM Quiz; participated in the training on "The Working Youth Leader"	
Forestry Students Society (FSS)	Orientation and acquaintance party, charity work like gift giving, community feeding and <i>alay linis</i> ; tree planting, <i>pangisahan sa gubat</i> ; participated in University intramurals and anniversary	
Student Body Organization (SBO-LSULHS)	Hired a laborer to maintain the cleanliness of all comfort rooms; worked for the cleanliness and sanitation of the whole high school campus including the beach area; quiz; presentation during school programs like Science Fair, JS prom, honors' program, valentines, <i>Buwan ng Wika</i> , Science Month	

## Alumni Achievements and Support

### Alumni Achievements

- Mr. Carlito C. Cabañas Jr., a 2003 BS in Agriculture major in Soil Science graduate, won 3<sup>rd</sup> place, Best Undergraduate Thesis category, during the 6<sup>th</sup> Annual Meeting and Symposium of the Philippine Society of Soil Science and Technology, Inc. (PSSST) held at the Camarines Sur State Agricultural College in Pili, Camarines Sur on May 8-10, 2003.
- Mr. Ian M. Navarette, a 2003 MS in Soil Science graduate, made it as finalist in the search for outstanding graduate thesis, a national competition sponsored by the Philippine Council for Advanced Science and Technology Research and Development (PCASTRD).



Mr. William A. Hubahib, a 2002 BS Development Communication graduate, was among the 10 Philippine delegates to the Korea-ASEAN Youth Exchange Program held at Seoul and Gangwon Province, South Korea on February 9-19, 2003. The program was part of the Future-Oriented Cooperation Project of the Republic of Korea and ASEAN partnership.

## Alumni Support

The LSU alumni continued to support the University in the pursuit of improving its functions as well as services and facilities. Among their contributions/donations in 2003 were:

- Computer unit, computer table, and chair given to the Alumni and Community Relations Office (ACRO) by 10 alumni based in Japan. Ms. Lynnetta Gatoc-Jones (BSADE, 1987) also donated a second hand printer and fax machine to ACRO.
- Computer printer and scanner to the University Library by Mr. Josefo Tuyor (BSA, 1991).
- Payment of ACRO's monthly telephone bills by Mr. & Mrs. Edgar and Monyeen Dante.

## Faculty

### Scholarships

Three LSU Main Campus faculty members and an alumnus qualified for Fulbright Scholarship in the masteral and doctoral levels in the fields of soil science, botany, biochemistry, and horticulture.

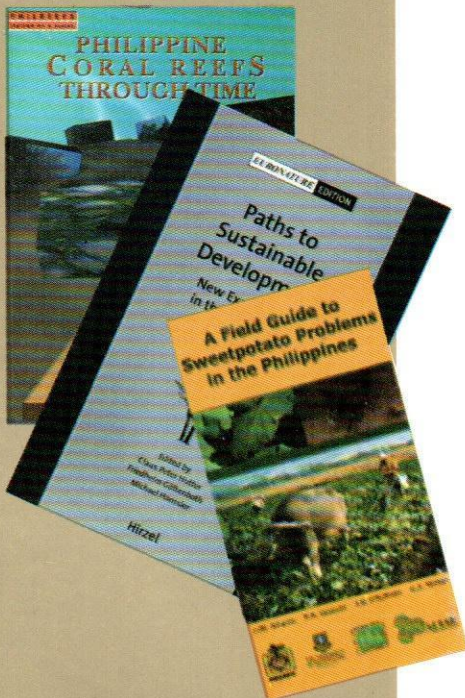
Twelve (12) faculty members pursued advanced studies (5 for PhD and 7 for MS) with scholarship grants from the German Academic Exchange Service (DAAD) Scholarship Program, John Allwright Fellowship (University of Queensland, Australia), Neys van Hoogstraten Foundation, DA-BAR, LSU Fellowship, and Fulbright Philippine Agriculture Scholarship.

### Publication

Eighteen LSU faculty authored/co-authored publications which were published in national journals, international journals, and other international publications.

### Faculty Strength

The instruction, research, and extension activities of the LSU Main Campus were carried out by 254 faculty members (102 Ph.D., 102 MS/MA, and 50 BS). Forty-nine (49) of them were detailed in research centers, 5 on secondment in other government offices, and 3 on sabbatical leave. One faculty from another state university was on secondment at LSU.



Some of the publications authored/co-authored by LSU staff.



## Faculty Assignments/Achievements

- Prof. Alan L. Presbitero was conferred a Ph.D. degree by the Griffith University, Nathan Campus, Australia.
- Dr. Bernardita P. Germano was tapped as consultant by World Bank for its Mindanao Rural Development Project-Coastal and Marine Biodiversity Conservation Project: Integrated Coastal Management of Balayan Bay.
- Prof. Alejandro C. Caliente was detailed at SLSCST, Southern Leyte as project advisor of the province-wide integrated coastal zone management project by GTZ.
- Dr. Victor B. Asio of the Department of Agronomy and Soil Science was elected Secretary of the Commission on Soil Geography of the International Union of Soil Sciences.
- Dr. Eduardo O. Mangaoang was re-elected to the Board of Directors of the Philippine Agroforestry Education and Research Network (PAFERN).
- Dr. Julie D. Tan was re-appointed General Secretary of the Asian Federation of Societies for Lactic Acid Bacteria (AFSLAB).
- A number of LSU faculty members served as resource persons/ reviewers/coordinators for the 1<sup>st</sup> Board Examination for Agriculture.

## Seminar/Training/Workshop

The Department of Pest Management (DPM) held Team Building Seminar on April 30, 2003 for its staff to enhance interpersonal relationship and renew their commitment to the department.

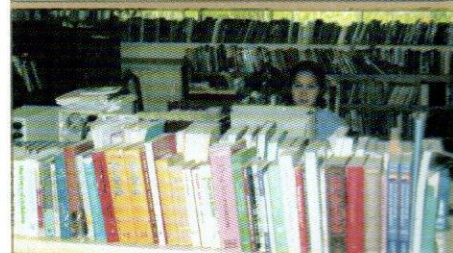
A total of 786 academic staff of the LSU System attended different trainings/seminars/conferences during the year and these included 47 international, 117 national, 114 regional, and 151 local trainings (Table 4).

## Library Services

The University Library was identified as one of the 14 institutions to spearhead national information networking through the "PHILAGRINET" - to provide access to printed and electronic agricultural knowledge generated by public and private institutions engaged in agricultural research in the Philippines.

## Acquisitions

The University Library acquired through purchase, gifts, or exchange a total of 3,069 print and non-print materials which included 2,164 books, 230 serials, 196 VHS tapes, 60 CDROMs, 47 VCDs, 4 DVD, 349 theses/dissertations/case studies/special problems, 13 terminal reports/training modules, and 6 newspapers. It has now a total of 57,807 volumes of accessioned learning materials.



The newly acquired CDs, VCDs, and books of the University Library.





Dr. Terry Tucker of Cornell University (top) and the participants of Conservation Farming in the Tropical Uplands (CFTU) Network Meeting.



Dr. David Bates of Cornell University (top) and the participants of CU-LSU Partnering Workshop on "Community-Based Watershed Management Support Project".

**TABLE 4. TRAININGS ATTENDED BY FACULTY**

Dept./College/Center	International		National		Regional		Local	
	Trng.	Participants	Trng.	Participants	Trng.	Participants	Trng.	Participants
<b>College of Agriculture</b>								
DPM	6	13	20	25	11	42	13	30
DAS	1	1	3	4	4	7	9	18
DOH	-	-	3	4	-	-	2	2
DDC	1	1	5	6	1	1	11	12
DASS	2	2	-	-	1	1	2	2
DFCS	-	-	1	1	3	3	7	15
DGRPB	-	-	3	3	6	6	3	3
<b>College of Engineering &amp; Agri-Industries</b>								
DAE	4	5	3	3	1	1	3	3
DBM	-	-	-	-	-	-	4	14
DCST	1	1	-	-	1	1	-	-
DOE	-	-	3	3	1	1	17	28
DFST	3	4	3	7	2	3	3	3
<b>College of Vet. Medicine</b>								
	2	2	3	3	-	-	3	3
<b>College of Arts &amp; Sciences</b>								
DBS	3	8	5	5	10	11	5	9
DLABS	-	-	1	1	2	2	-	-
DoPAC	2	2	2	2	3	4	5	11
DMPS	-	-	-	-	1	1	-	-
<b>College of Education</b>								
LSU-LHS	-	-	4	4	12	18	8	22
	-	-	1	12	3	3	4	4
<b>College of Forestry</b>								
DAF	3	5	5	7	1	1	4	6
DFWMC	1	6	1	3	-	-	1	1
<b>Institute of Human Kinetics</b>								
	-	-	2	2	1	1	3	3
<b>SUB-TOTAL</b>								
	29	50	68	95	64	107	110	199
<b>Research Centers</b>								
FARMI	3	4	8	8	6	6	2	2
ISRDS	-	-	2	2	2	2	3	4
ITE	1	11	1	7	13	19	2	13
MMDC	-	-	-	-	1	1	2	4
NARC	4	4	5	13	2	8	4	6
NCRC-V	4	8	5	7	2	12	8	49
PhilRootcrops	4	4	16	33	3	8	7	24
<b>SUB-TOTAL</b>								
	16	31	37	70	29	56	28	102
<b>Satellite Campuses</b>								
Alangalang Campus	1	3	3	3	15	17	-	-
Isabel Campus	1	2	7	10	1	2	5	11
Tolosa Campus	-	-	1	2	2	3	5	10
Villaba Campus	-	-	1	1	3	6	3	6
<b>SUB-TOTAL</b>								
	2	5	12	16	21	28	13	27
<b>GRAND TOTAL</b>								
	47	86	117	181	114	191	151	328



## Donations

The University Library received donations from the following persons and student organizations: Dr. Mark Goettel of Leithbridge Research Center, Canada - 2 journal titles "Mycologia" and "Canadian Entomologist"; Theta Sigma Omega Fraternity/Sorority of the LSU Main Campus - 2 wall clocks; Visca Chemical Society (ViChemSo) - CD and pulse unit; and Mr. Josefo Tuyor - computer printer and scanner.

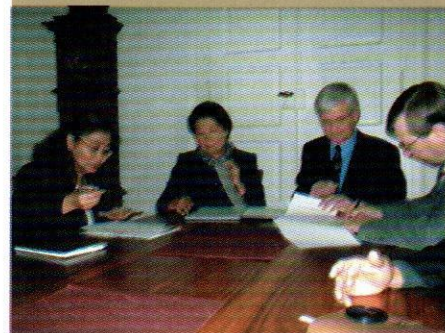
## Collaborations

The Loye State University (LSU) and the Georg-August University in Goettingen (UG), Germany entered into a Memorandum of Understanding (MOU) for a joint-offering of Master of Science in Tropical Forestry to strengthen forestry education and research at LSU through the support and assistance of the University of Goettingen (UG) and provide tropical exposure of forestry students from UG and exchange of knowledge and experience on scientific exchange to promote their teaching and research collaboration.

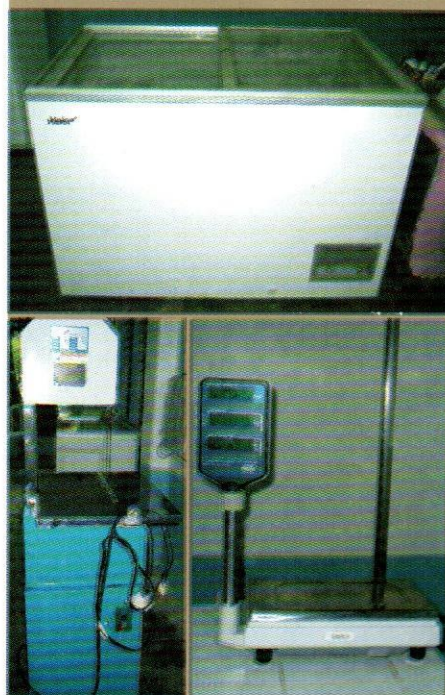
## Acquisitions

The departments of the following colleges of the University System acquired some equipment and other materials to facilitate their academic and research undertakings:

- College of Agriculture (CA) - 1 unit each of Pentium IV computer, printer, air conditioner, chest freezer, upright freezer, ordinary refrigerator, 20° refrigerator, bone saw with meat grinder, digital weighing scale, gas range, gas tank, top loading balance, pH meter, microphone, English-Cebuano dictionary, water tank, wall fan, DNA Analysis and Tissue Culture Laboratory, and Plant Genetic Resources and Cytogenetics Laboratory; 2 units each of computer table, computer chair, stand fan, and 24-cage structures for layers; 3 units each of overhead projector and stapler.
- College of Engineering and Agri-Industries (CEAI) - 1 unit each of Pentium 4 computer (server), computer, laptop computer, digital camera, television set, forced convection oven, microwave oven, sealer, engineer's transit, 43-inch TV set for the second Computer Laboratory; 2 units each of printer, Brunton compass, surveyor's tape, ceiling fan; 3 units overhead projector; 4 units each of industrial stand fan and stadia rod; 6 units hand level; 16 units Pentium 4 computers (workstations), books in math, physics, computer science and engineering; fabricated 10 units stadia rods; constructed new cabinets for display of hydrometeorology and surveying instrument/equipment; and established DCST administrative office and 3<sup>rd</sup> computer laboratory room.
- College of Arts and Sciences (CAS) - 1 set each of HPLC Shimadzu 6A series, HPLC Shimadzu 10A series, HPLC Milton Roy (modern type), Electrophoresis apparatus; 1 unit each of digital multimeter, gene pulser, autoclave, vortex shaker, hot plate, PC system, videoflex camera,



Signing of the Memorandum of Understanding (MOU) between LSU and Georg-August University in Goettingen Germany.

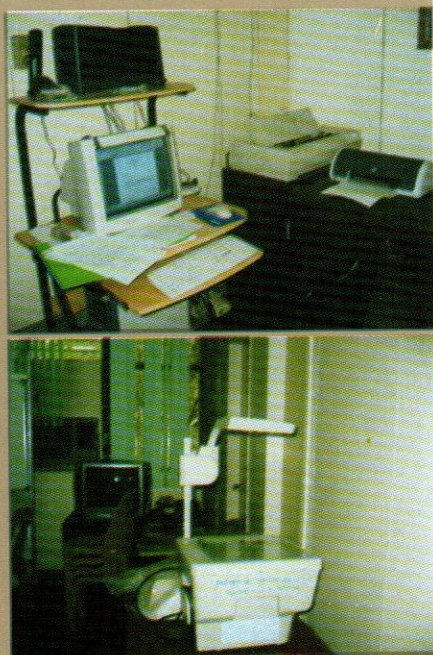


The newly acquired equipment of the Department of Animal Science: chest freezer (top), digital weighing scale (right), and bone saw with meat grinder (left).





(Clockwise) The newly acquired set of microscopic video camera with television, chest freezer, pH meter, and Karaoke of the College of Veterinary Medicine.



The computer table, personal computer and colored printer (top) and overhead projector (bottom) acquired by the College of Education.

stand fan, licensed copy of SPSS for Windows, Spartan '04 Windows, HyperChem Release 7.02; 2 units each of field computer, air conditioner, stereomicroscopes with zoom, magnetic stirrers, distilling apparatus, HPLC columns, glass wares/supplies for tissue culture, clean bench (Laminar Flow level 2), inverted microscope (AO Brand), advance research microscope with attachment for PMS, and exhaust fan; 2 sets Organic Chemistry kit; 3 units compound microscope; 3 sets Rotavapors; 4 units overhead projector; 8 units ceiling fan; 105 pieces monoblock chairs; and curtains for the Speech Laboratory.

- College of Veterinary Medicine (CVM) - 1 unit each of chest freezer, microscopic video camera, television set, pH meter, colony counter, electrical dual dehorner with mostete, and Karaoke; 2 units pressure cooker; and 3 units overhead projector.
- College of Education (COE) - 1 unit each of flatbed scanner, telephone set and line, electric air pot, and electric fan; 2 units each of personal computer, colored printer, overhead projector, and computer table; 3 units steel cabinet; and 6 pieces office white boards.
- College of Environmental and Agricultural Technology (LSU-Alangalang Campus) - 1 unit each of copying machine, automatic voltage regulator (AVR), and 4-drawer steel filing cabinet; 4 units each of jetmatic pump, calculators, and stand fan.
- College of Agri-Industrial Technology (LSU-Isabel Campus) - 1 unit each of laser printer, colored printer, paper copier/enlarger/reducer, automatic voltage regular (AVR), angle grinder, steel ladder, and computer chair; 4 units each of giant uninterrupted power supply (UPS), printer, and Rota Aire fans; 6 units computer (Intel Celeron); and 26 units Pentium 4 computer.
- College of Fisheries (LSU-Tolosa Campus) - 1 unit motorized grasscutter.
- College of Education and Agricultural Technology (LSU-Villaba Campus) - books, 1 unit each of power tiller (Landmaster), power sprayer, wheel barrow, electric planer; 2 units each of fire extinguisher and grasscutter.



# Research and Development

**L**SU continued pursuing its research goals by conducting scientific studies that help assure economically sustainable and environmentally sound agriculture. Emphasis of agricultural research activities were on rootcrops, abaca, and coconut production which constituted 80% of the total research undertakings while research on natural resources covered only a few studies on forestry and fisheries. Several research ventures resulted in the generation of technologies and useful information.





## Technologies/Information for Dissemination



Sweet Potato Pickles.



The botanical plants used as biofungicide: 1) Kamantigue (*Impatiens balsamina* L.), 2) Olasiman (*Portulaca oleracea* L.), 3) Ampalaya (*Momordica charantia* L.), 4) Ginger (*Zingiber officinale* Roxb.), 5) Saluyot (*Corchorus olitorius* L.), and 6) Asyang (*Mikania cordata* (Burm. F.) B.L. Robinson)

- Lines V28-2, V27-2 and V27-5 Resistant to Sweetpotato Feathery Mottle Virus
- High Yielding Off-Season Varieties
- Diagnostic Key for Sweetpotato Problems
- Worm Control Measures in Goats
- Optimum Formulation of Peanut Brittle/Praline of Buray, Paranas, Samar
- Use of *Trichoderma* for Taro Leaf Blight and Yam Tuber Rot Control
- Pest and Disease Resistant Eggplant Variety (A-300)
- Local Ecological Knowledge for Sustainable Forest Resource
- The Status of Credit Support for Smallholders Forestry in Leyte
- Geographic Information for Coconut, Rootcrops and Abaca in Eastern and Central Visayas
- Profile of Coral Reef Resources in Baybay and Inopacan
- Usefulness of Permanent Quadrats in Monitoring Marine Sanctuaries
- Sweetpotato-Based Fermented Beverage
- Sweetened Sweetpotato Bars/Strips
- Sweetpotato Pickles
- Precocious and Self Pollinating Makapuno Palms
- Micropropagation Techniques for Yam Production
- Vitamin A Fortified Peanut Butter
- Abaca Twining Machine
- Curricular Program Map of Region 8 and New Soil Map of Leyte

## Award Winning Researches

### Extraction and Evaluation of Bioactive Components from Selected Botanicals as Biofungicide Against Major Fungal Diseases of Rootcrops

Extracts from ampalaya (*Momordica charantia*), asyang (*Mikania cordata*), ginger (*Zingiber officinale*), kamantigue (*Impatiens balsamina*), olasiman (*Portulaca oleracea*) and saluyot (*Corchorus olitorius*) could be potential biofungicides against major fungal diseases of rootcrops. Crude extracts of ampalaya in ethanol and acetone were fungicidal to anthracnose (*Colletotrichum gleosporioides*) and leaf blight (*Phytophthora colocasia*); asyang to leaf blight; ginger to scab (*Sphaceloma batatas*); kamantigue to tuber rot (*Sclerotium rolfsii*) and scab; and saluyot to scab and leaf blight.



### Laboratory Dryer for Thin-Layer Drying Experiments

The IFS-PhilRootcrops Laboratory Dryer is an invention that can produce reliable and accurate data especially in thin-layer drying experiments involving granular materials like grates. It is a three-cabinet dryer and stands 103.5 cm with 120 cm length and 40.5 cm width. It has a manual and automatic control system that allows recording of the weight of the samples during drying without necessarily removing them from the dryer.

### Potential of Sweetpotato for Pickle Production

Two orange flesh and high carotene content sweetpotato varieties: VSP-1 and RC2000, were used to produce SP Pickles. The roots were shredded and cured using the modified curing method to reduce its inherent starchiness and improve the texture (crispiness) and overall quality of the product. Lactic acid bacteria (LAB), a useful microorganism to human health, was incorporated into the pickles. The pickles had no artificial preservatives.

### Technical Improvement of the Rootcrop Grates Processing System

To improve the existing rootcrop grates processing system, two machines were developed: the batch-type spinner for extracting water from fresh grates; and the rotary, drum-type dryer for drying the grates. The batch-type spinner is driven by a 1-horsepower motor and can extract more than 200 kg/h of fresh grates, which is more than 10 times the capacity of the screw-type presser (20 kg/h). The rotary, drum-type dryer can dry cassava grates in 16 minutes, has a capacity of 40 kg/h, and consumes an 11-kg LPG in 22 hours.

### Promotion of the Vetiver Grass Technology in the Philippines

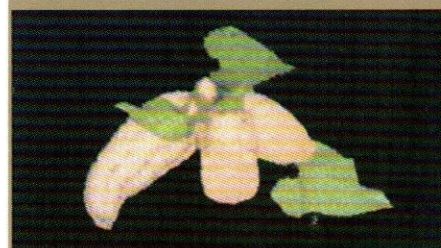
Vetiver is a kind of grass otherwise known as “mora” and is used in stabilizing the dikes and irrigation canals of rice fields. Farmers dub vetiver as the “miracle grass” may be because of the social, economic and environmental impacts of Vetiver Grass Technology (VGT) to man and to the environment. The VGT is one of the easiest methods of controlling soil erosion, slope stabilization, and land rehabilitation and this has been confirmed not only by Philippine users but also by VGT users throughout the world. Based on reported estimates, VGT only entails 10% of the cost per square meter of steel and concrete slope stabilization system and can save millions of pesos if used in slope stabilization and erosion control projects.



Vetiver grass used to stabilize dikes and irrigation canals.



The IFS-PhilRootcrops electric laboratory dryer.



The promising sweetpotato variety for pickle production (top); bottled Sweet Potato Pickles (bottom).





The ubi and sweetpotato germplasm collection of PhilRootcrops.

## Research Highlights

### Germplasm Collection

PhilRootcrops obtained 6 additional accessions of yam for its germplasm collection or gene bank. To date, its gene bank has a total of 2,015 rootcrop accessions consisting of sweetpotato - 910; cassava - 322; yam - 394; taro - 303; arrowroot - 35; and yambean - 51.

The National Abaca Research Center (NARC) collected 10 additional abaca accessions from Valencia, Negros Oriental and Leyte (Villaba, Balinsasayao & Baybay), making a total of 754 accessions in its abaca genebank.

### Variety Development

**Cassava.** Two cassava varieties developed by PhilRootcrops, namely: NSIC CV-23 (OMR 33-12-3) and NSIC CV 24 (OMR 33-12-7), were approved and released by the National Seed Industry Council (NSIC) for national adoption. NSIC CV-23 has a root yield of 26.1 tons per hectare (with 38.9% dry matter, 28.5% starch, and 6.0 HCN content) and matures in 10-12 months. NSIC CV 24 has a yield of 24.1 tons per hectare (with 38.0% dry matter, 27.2% starch, and 5.2 HCN content) and matures in 10-12 months.



CV 24

**Sweetpotato.** A new sweet potato variety, NSIC Sp-26 (JK 024), was approved and released for national adoption by NSIC in 2003. It has an average root yield of 14.62 tons per hectare (with 34.07% dry matter, 15.94% starch, and 3.88% sugar), matures in 105-120 days, and has an acceptability of 7.86 (with 10 as the highest possible acceptability score).



Sp-26

**Yam/Ubi.** NSIC U-6 (LA-155), a new variety of yam/ubi, was approved and released for national adoption by NSIC. It has a marketable yield of 15.34 tons per hectare, (with 35.15% dry matter, 23.64% starch, 0.298% protein, and 1.08% sugar), matures in 7-8 months, and has a general acceptability of 6.40.



U-6

### Varietal Improvement

**Abaca.** The National Abaca Research Center (NARC) obtained the following results from abaca varietal improvement research:

- Among the 45 hybrids harvested, the hybrid from Davao x Laylay showed the highest fiber recovery of 1.60% while the hybrid from Bisaya x Ihayop produced the highest fiber yield of 577.2 grams per plant.
- Seventy-nine (79) accessions were morphologically characterized (vegetative - 13; inflorescence - 39; and fruits/seeds - 27) while fibers of 23 accessions were chemically and morphologically evaluated based on fiber quality (strength, color, luster, texture, length, and uniformity). From the latter, 5 accessions were identified as suited for fibercraft



industry and 6 accessions for pulp and paper based on their chemical traits and fiber cell morphology.

- Three (3) slow growth media for *in vitro* conservation were developed and 109 accessions were duplicated *in vitro* using the optimized storage medium, making a total of 223 duplicate accessions *in vitro*.
- Propagated 43 promising accessions for field evaluation, 83 accessions for acid tolerance screening, and 6 accessions and 17 *in vitro* cultured *Inosa* and *Laylay* for DNA fingerprinting.
- Cross-pollinated 67 accessions and collected 9,591 seeds from 7 crosses for germination in seedboxes to be used in single plant or clonal evaluation.
- Established new sets of experiment for field evaluation of 22 accessions at LSU and Milagro in Ormoc City and for bunchy top resistance screening of 12 accessions through natural infection in Mahaplag, Leyte.

## Tissue Culture

**Cassava.** The effect of addition of thiamine on the culture medium for meristem-derived *in vitro* plantlets seems to be genotype-specific. Better growth was observed on the highest thiamine concentration used (200 mg/L).

**Sweetpotato.** The addition of thiamine at different concentrations (0-200 mg/L) for *in vitro* plantlets from meristem did not significantly affect the growth of cultures *in vitro* as well as their potting survival and growth.

**Taro.** Mannitol was better than abscisic acid in reducing growth rate of taro shoot cultures. As the concentration of mannitol was increased, a corresponding display in shoot and first open leaf production was observed.

## Crop Production & Cultural Management

**Yam.** The different cultural management practices did not significantly influence the bulbil production of VU-2 while yam-bulbils-derived plants were comparable to those derived from subterranean tubers in terms of growth and development. The addition of 16 kg/ha Biozome (micronutrient fertilizer) to the usual recommended fertilizer rate enhanced the growth and yield of yam.

**Abaca.** Planting abaca at 2m x 2m and intercropped with Sweetpotato-Peanut-Ginger produced the highest yield (331.7% more than its monocrop counterpart) among the treatments, gave a Land Equivalent Ratio (LER) value of 6.051, and is 3 times more efficient than the abaca monocrop counterpart since Area x Time Equivalent Ratio (ATER) was 3.678.

Size of culture vessels at initiation stage affected the growth of meristem culture, but shoot-tip culture had faster growth than meristem culture and can be micropropagated 8 weeks after inoculation (WAI) compared to 12 WAI in the latter culture.

**Vegetable Crops.** Vegetable crops like lettuce, cabbage, sweet pepper, and tomato performed better when grown under protective structure than in the open. The benefits of protective cultivation was more evident during the



rainy months of July to December than during the relatively dry months of January to May.

**Cucurbits.** Two entries of cucurbits: EG SQ # 109 and EG SQ # 39, outyielded the check entry, Rizalina, in both dry and wet seasons' evaluation.

**Hybrid Rice.** Seedling interval between male parent (R-lines) and female parent (A-lines) was 21 days for wet season and 18 days for dry season planting at LSU.

## Pest Management

**Sweetpotato.** Serological test using NCM-ELISA indicated that the disease called "camote kulot" is complex and caused by simultaneous infection of eight (8) viruses, namely: sweetpotato feathery mottle virus (SPFMV), sweetpotato mild mottle virus (SPMMV), sweetpotato latent virus (SPLV), sweetpotato chlorotic fleck virus (SPCFV), C-6 virus, sweetpotato mild speckling virus (SPMSV), sweetpotato caulimo-like virus (SPCal-V), and sweetpotato chlorotic stunt virus (SPCSV).

- **Insect Vectors.** Five insect species were suspected vectors associated with virus-infected sweetpotato found in Bataan and Tarlac, namely: *Aphis gossypii*, *Myzus persicae*, *Bemesia tabaci*, *Aleurodicus dispersus*, and *Haiticus minus*.
- **Weeds.** Six weeds were identified as alternate host of the sweetpotato virus. These were *Calopogonium muconoides*, *Commelina benghalensis*, *Elephantopus tomentosus*, *Ipomea triloba*, *Mikania cordata*, and *Stachytarpheta jamaicensis*.

**Nematicide.** The effective concentration of *D. hispid*a-based nematicide was 2000 ppm and can cause mortality comparable to Nematicur, a commercial nematicide. *D. hispid*a powder performed better when incorporated into the soil with effect comparable to Nematicur than when applied as side-dressing only.

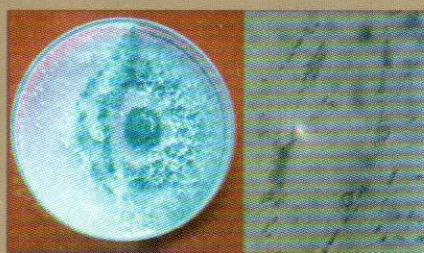
**Biological Control of Rootcrop Pathogens.** A significant reduction of disease incidence/percent infection in plants applied with *Trichoderma* was noted, which resulted in significantly higher yield.

**Rice-Vegetable Cropping System.** The fungal antagonists used as biological control agent against fungal plant diseases reduced damping-off infection caused by *Sclerotium cepivorum* and *Fusarium oxysporum* at 60 days after transplanting at the PhilRice experimental field, and this resulted in higher crop yield. While at the Bongabon area, the application of *T. viride* and *Trichoderma* sp. resulted in reduced pink root infection caused by *Phoma terestrial* and this was comparable to the effect of fungicide, Maneb, used as check.

**Use of Entomopathogenic Fungi for the Control of *Pentalonia nigronervosa* Coquerel.** Soil and abaca stalk treated with inoculum were more ideal for bioassay. Results showed significantly lower (19-27%) aphid mortality on both treatments. *Verticillium lecanii* conidia can germinate and form conidia on the leaf surface for at least a week under humid conditions which can be a source of inoculum for incoming aphids to get infected.



Symptoms of SPFMV and other virus diseases: (1) vein feathering, (2) vein clearing and curling, (3) chlorotic spot, (4) purple spot, (5) leaf curling and leaf strapping, and (6) stunting.



*Trichoderma viride* (antagonist) overgrows *Sclerotium ralfii* (pathogen) under laboratory condition (left); Conidia and Conidiophore of *T. viride* (right).



Abaca aphids moved on the soil to search for a new host plant, making it possible for them to pick up conidia of *V. lecanii* when the fungus is applied on the soil.

#### **Marker-Aided Backcrossing of Bacterial Blight Resistance Genes.**

Isolates from Pangasugan produced very long lesions on 18 lines tested during the 1<sup>st</sup> and 2<sup>nd</sup> batches of phenotyping. The third batch of maintainer and restorer lines included the Tacloban isolate that produced the longest lesion. During the 4<sup>th</sup> batch of phenotyping, it was found that Tacloban isolate caused "Kresck" on IR 24. Parental genotyping for the presence of Xa4, Xa7 and Xa21 confirmed the presence of the target genes in the Donor 235-25-21-5 and control lines IRBB4, IRBB7 and IRBB21. DNA analysis revealed that IRBB4, IRBB7 and IRBB21 possess Xa4, Xa7 and Xa21, respectively, while 235-21-5 possesses all these genes.

### **Fishery**

#### **Capability Building for Community-Based Coastal Zone Management of Southern Leyte.**

Results of the two-year monitoring of the protected marine areas show that the resources did not experience further decline compared to areas that were unprotected. Of the 7 assessed areas, 60% maintained their category while 40% improved, including one that reached an excellent status (coral cover of 75-100%). The fish fauna of the sampled marine sanctuaries improved over the last several years in terms of fish counts. In 2003, species richness ranged from as low as 33 species at Hingatungan, Silago to as high as 71 species at Cogon, Anahawan. The measured values for the different physico-chemical parameters (temperature, salinity, transparency) were all within the normal range for coastal waters.

**Sustaining Local Management of Resources in Cuatro Islas.** In Apid Island the following were observed: a slight increase in seaweed composition from 8 to 10 between 1999 and 2002; low total live coral cover of 8.31% of which 7.81% were hard corals and 0.5%, soft corals; and there were 92 fish species of which Labrids and Pomacentrids were the most abundant species and families. The marine sanctuary at Mahaba Island showed the following: increase for both seaweed and seagrass composition which could be attributed to the protection of the sanctuary; 15.82% of live corals were recorded of which 15.33% were hard corals dominated by *Porites* followed by *Montipora*; and an increase in the number of fish species. The following were likewise observed in Digyo Island: seaweeds and seagrasses improved from very poor (3.6%) in 1999 to satisfactory (15.5%) in 2002; had the most diverse coral community with 20 types of hard corals (*Montipora* had the dominant cover (15.94%) and live mounds of *Porites* were also observed) and it had 79 fish species.

### **Micro Culture & Fermentation**

**Molds.** Of the identified molds, 4 showed antimicrobial activity against *Lasiodiplodia theobromae* (sweetpotato rot-causing mold) and only 2 showed antimicrobial activity against *Colletotrichum gloesporioedae* (yam and mango anthracnose-causing mold).



The technical core group for the Community-Based Coastal Zone Management of Southern Leyte in one of their meetings.



**Bacteria.** Of the identified bacteria, 6 showed antimicrobial activity against *L. theobromae* and *C. gloesporioedes*. A total of 413 lactic acid bacteria (LAB) were isolated and maintained in the laboratory, of which 128 were obtained from bottled SP pickles, 85 from fermented arrowroot extracts, and 200 from cured SP shreds.

**Bacteriocin extraction.** Three methods for bacteriocin purification, namely: ammonium sulfate precipitation, gel filtration, and adsorption of bacteriocin onto bacteriocin-producing cell, were able to extract bacteriocin but the recovery was low.

## Biotechnology

**Protein Profiling.** Sixty-four (64) samples from cassava roots, taro corms (acid and non-acid), and healthy and pest-infested and diseased sweetpotato or cassava stems/leaves were analyzed for protein using Bio-Rad assay.

**Cytokine Memetic Properties.** Fifty six (56) indigenous plant species classified as weeds, ornamentals, medicinal plants, rootcrops, fruits, and vegetables were analyzed for total protein content using bovine serum albumin as standard.

## Postharvest

**Yam.** Application of glyphosate effectively controlled sprouting of yam during storage, and long-stored tubers sprouted profusely when planted in pots. Moreover, application of GA<sub>3</sub> effectively prolonged the dormancy of yam tubers. Lower concentrations of ethrel enhanced sprouting while its high concentration slightly delayed sprouting.

## Processing and Utilization

### Abaca

- **Pulping Machine.** The village-scale pulping machine for handmade paper making was further improved by fixing the two plates on the sides of the beating roller to minimize clogging of pulps on the beating roller which reduced the beating uniformity.
- **Twisting Machine.** The pulling mechanism, gear combinations, operating speed, switch control, and the method and technique of feeding the twisting machine were modified and improved to adapt to the twisting of abaca *bacbac* materials.
- **Twining Machine.** One set of feeding spool assembly was added to the machine to accommodate production of 3-filament twine or rope.
- **Handmade Paper Dryer.** The handmade paper dryer was modified by changing the direction of the flame of the dryer's burner, from vertical to horizontal, to improve the heat distribution of the flame. Moreover, a hand roller was designed and fabricated to eliminate the warping problem of the dried handmade paper and improve the smoothness of the paper surface not in contact with the surface of the dryer.



The village-level pulping machine (above); abaca twisting machine (middle); and handmade paper from abaca (bottom).



**Bacbac Yarn and Bacbac Twine Products.** *Bacbac* yarn (1/8" to 1/4 "Ø sizes) and *bacbac* twine products (3/16" to 1/2 "Ø) were developed using the machine prototypes. Acceptability evaluation showed significant findings in terms of degree twist, uniformity, and general acceptability.

**Handmade Paper Products.** A total of 1,500 different sheets of handmade paper were produced based on the order of private individuals: 1,200 - for wedding invitation, cards, envelopes; 100 - for Christmas cards; and 200 - for printing of call cards and labels.

## Engineering

**Spinner Machine.** A new spinner machine for extracting water from grates, with a capacity of more than 10 times the existing presser machine, was designed, fabricated, and evaluated.

**Grater Machine.** An improved grater machine was designed and fabricated and this proved to be better in terms of output capacity than the existing machine.

**Rotary Drum Dryer.** The rotary drum dryer was modified by improving its flights for maximum stirring effect of grates and improving blower and transmission systems.

**Aquifer Characterization Study in Region 7.** Shallow aquifer characteristics such as transmissibility and specific yield through *in situ* pumping test were determined for the following areas in Region 7: Calape and Tubigon in Bohol, Naga in Cebu, and Bacong in Dumaguete, Negros Oriental, which were selected because of the presence of nearby observation wells. Pump test, processing, and analyses of data are still under way as of this writing.

## Forestry

**Seedling Containers and Hardening Intensity on the Growth of *Eucalyptus deglupta* and *Acacia mangium*.** Seedlings grown in hyko trays had better root system but smaller in size and with lesser biomass compared with those grown in poly bags where the existence of j-rooted seedlings was common and bigger in size. Field trial result indicated that seedlings grown in hyko trays though smaller in size, performed relatively well when planted in the field and in terms of efficiency in tree farm establishment. The use of hyko-trayed seedlings was more efficient than poly-bagged ones.

## Soil Science

**Nutrient Management Support System (NuMaSS).** Initial results showed that fertilizer rate based on NuMaSS gave the highest corn yield in the five farms used in the study although not significantly different from the regional fertilizer recommendation.



The novelty items (clockwise): gift items and gift bags from handmade paper; woven abaca twine; tray from abaca twine and bacbac; and folding chairs from woven abaca twine.



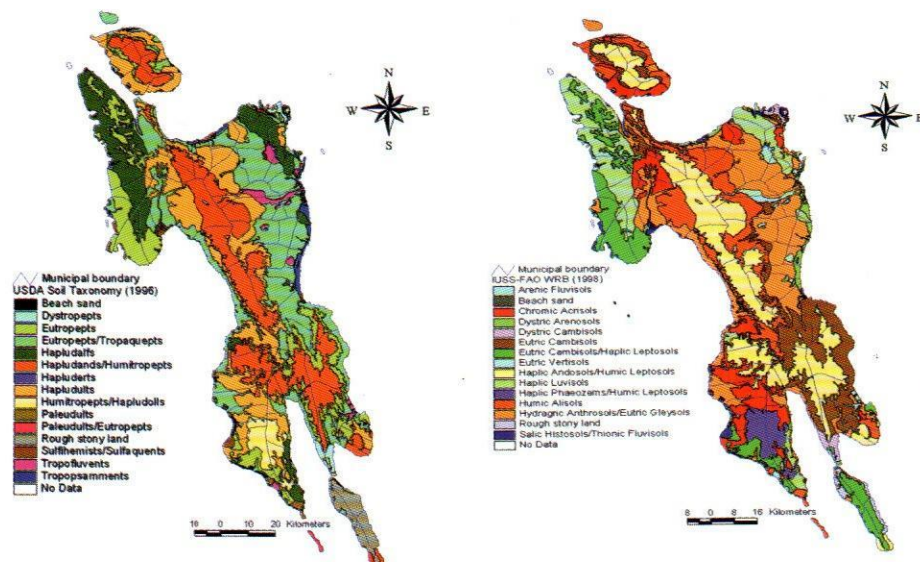
The rotary, drum type dryer.



*Eucalyptus* seedlings in hyko trays (top); and seedlings of acacia in different seedling containers (bottom).



The new soil maps of Leyte based on USDA Soil Taxonomy Classification (left) and on IUSS-FAO Classification (right).



**New Soil Map of Leyte.** The drafts of the two new soil maps of Leyte based on modern classification systems (USDA Soil Taxonomy and IUSS World Reference Base) were finished and set for verification and finalization.

## Significant Results of Completed Research Projects

### Process and Formulation of Buray Peanut Brittle/Praline

The optimum quality of the product was attained with the following process: 50 minutes peanut roasting time, formulation of 45% sugar, and 16 minutes syrup cooking time. It was found out that roasting time had the main effect on the product quality.



Peanut brittle.

### Impact Assessment of Vitamin A Fortification of Peanut Butter on Filipino Families and Consumers

Ninety-six percent (96%) of the medium-income and 95% of the low-income respondents agreed to use Vitamin A-fortified peanut butter.

### Needs Assessment for the Development of Cassava Industry in Muslim Mindanao

Cassava in Muslim Mindanao is utilized as raw material for starch production and food. Growers in Maguindanao and Lanao del Sur provinces planted cassava basically as raw material for starch production and not for immediate food, as the people there consumed cassava products as snacks and not as staple food. In the province of Tawi-Tawi, cassava was grown mainly for food and consumed either boiled or processed into *puto*, *syanglag* (toasted) and *byanban*.



## Local Ecological Knowledge (LEK) Applications on Indigenous Trees: Contextualizing Farmers' Constraints in Sustaining Their Livelihood.

The research was an application of the methodology of LEK-Knowledge-Based System (KBS) with its accompanying WinkArt software, to study farmers' problems in sustaining their livelihood system in relation to the importance they placed on indigenous trees in degraded uplands of barangay Manlawaan, Tabango, Leyte. The results showed that most of the existing but slowly disappearing indigenous trees were found within or near the Binaliw watershed which is the source of water for the whole village. Focused-group discussion (FGD) results indicated that infertile soil was the immediate pressing problem of farmers coupled with the decreasing water supply for farm and home uses due to rampant tree cutting. Although farmers realized the value of indigenous trees, fast growing trees were planted in their own farms for faster cash returns. Indigenous but fast growing trees preferred are *Samanea saman* (acacia) and *Melia dubia* (Bagalnga). Some species are slow growing but of premium wood quality such as *Pterocarpus indicus* (naga), and *Vitex parviflora* (tugas). Only *Ficus balete* (dakít) was noted for the presence of water in the vicinity.

## Targeting Technology Intervention for Food Security in the Philippines: A GIS Application for Agriculture Research Prioritization

Activities conducted were: land suitability mapping for mango, rambutan, and jackfruit in Region 8; data collection on water availability in the Eastern and Central Visayas regions, production of high-value commercial crops in Central Visayas, and land classification for Cebu and Negros Oriental; consultation meetings with DA-RFU 7 and CENVIARC regarding training for researchers and OPA-Bohol officials on mango research; and preparation and submission of a GIS training proposal for DA-RFU-7 personnel.

## Research Awards

LSU faculty/researchers gained recognition for their research accomplishments.

- Dr. Misael T. Diputado of the Department of Horticulture (DOH) and Dr. Lutgarda S. Palomar of the Department of Food Science and Technology (DFST) were granted professorial chairs by the Philippine Agriculture and Resources Research Foundation, Inc. (PARRFI) from January 1, 2003 to December 31, 2003.
- Dr. Edwin A. Balbarino of the Farm and Resource Management Institute (FARMI) received a *Certificate of Merit* from the Vetiver Network, USA for establishing the Vetiver Network in the Philippines.
- Forester Reneza F. Sales of the College of Forestry (COF) received the "2001 International Publication Award" for her undergraduate thesis entitled "Carbon Stock Assessment of Two Agroforestry Systems in a Tropical Forest Reserve in the Philippines" which was published in



Photos showing: farmers' practice of cutting trees for charcoal making (top) and charcoal ready for market (bottom).



The GIS Plotter.



the *Philippine Agricultural Scientist* on March 5, 2003 at UP Diliman, Quezon City.

Dr. Lucia M. Borines of the Department of Pest Management (DPM) was accorded the M. S. Swaminathan Outstanding Research Award by the Los Baños Science Community Foundation, Inc. (LBSCFI) during the DOST 2003 National Science and Technology Week celebration at the Philippine Trade and Training Center, Roxas Boulevard, Pasay City on July 18, 2003.



The M.S. Swaminathan plaque received by Dr. L.M. Borines.

Dr. Daniel Leslie S. Tan of the Philippine Root Crop Research and Training Center (PhilRootcrops) and Dr. Alan L. Presbitero of the Department of Agricultural Engineering (DAE) garnered the *Best Paper Award* in different categories during the 53<sup>rd</sup> Philippine Society of Agricultural Engineers (PSAE) Annual National Convention and Exhibition held at Waterfront Insular Hotel, Davao City on April 21-25, 2003.

Ms. Ana Leah D. Lim of the Department of Animal Science (DAS) and Dr. Roberta D. Lauzon of the Department of Food Science and Technology (DFST) won the 1<sup>st</sup> and 2<sup>nd</sup> places, respectively, in the "Regional Meat Processing Contest" held at the Department of Agriculture Regional Office, Tacloban City on May 5, 2003 and August 5, 2003, respectively.

Prof. Francisco G. Gabunada, Jr. of the Farm and Resource Management Institute (FARMI) was tapped by the Centro Internacional de Agricultura Tropical (CIAT) as Research Fellow effective May 1, 2003.

Dr. Candelario L. Calibo of the Department of Pure and Applied Chemistry (DoPAC) and Dr. Daniel Leslie S. Tan of PhilRootcrops obtained a 21-day research visit grant to Japan from October 5-25, 2003 under the Department of Science and Technology (DOST) and the Japan Society for the Promotion of Science (JSPS) Joint Scientific Cooperation Program.

Dr. Lina T. Villacarlos of the Department of Pest Management (DPM) received the *D. A. Secretary's Award for Research* on October 9, 2003, "in recognition of her outstanding paper published in the Institute for Scientific Information-Current Content Journal."

Prof. Feliciano G. Sinon and Engr. Alberto Martinez, Jr. of the National Abaca Research Center (NARC) got the 2<sup>nd</sup> place for *Tuklas* Outstanding Utility Model in the field of agriculture, fisheries, forestry and natural resources for their invention called "Twisting and Twining Machines." The award was given by the Technology Application and Promotion Institute (TAPI) during the 2003 National Invention Week on November 30, 2003 at Malacañang, Manila.

Dr. Edgardo E. Tulin of PhilRootcrops won 3<sup>rd</sup> place for *Likha* Outstanding Creative Research in the field of food, nutrition, health and education. He received the award from the Department of Science and Technology (DOST) on November 30, 2003 at Malacañang, Manila.



Engr. Feliciano G. Sinon receiving his award during the 2003 National Invention Contest.



## Research Funding

About 50% of the total R and D budget came from external sources: 35% from 14 government and non-government collaborating agencies/institutions, 15% from 15 foreign funding agencies, and the remaining 50% from LSU (Figure 1 and Table 5). New projects were started during the year with support from Tokyo University of Agriculture and Technology (TUAT-Japan), Third World Academy of Sciences (TWAS-Germany), Philippine Council for Advanced Science and Technology Research and Development (PCASTRD), Philippine Rice Research Institute (PhilRice), Department of Environment and Natural Resources - Land Administration and Management Project (DENR-LAMP), Peanut-Collaborative Research Support Program (P-CRSP), World Vision Development Foundation, Inc., and Department of Science and Technology-Philippine Council for Agriculture, Forestry and Natural Resources Research and Development - Department of Agriculture-Bureau of Agricultural Research (DOST-PCARRD-DA-BAR).

Other new initiatives for abaca, coconut, forestry, and farming systems programs gained international support from DaemlerChrysler, University of Hohenheim, and University of Goettingen in Germany; EURONATURE; Cornell University, New York, USA; and University of Queensland, Australia.

## Collaborations

During the year, LSU made agreements with the following institutions/agencies:

- Centro Internacional de Agricultura Tropical (CIAT) - for advanced training of LSU staff and graduate scholars, collaboration for the development of upland farming technologies, and sharing of information and expertise.
- Manchem Industries, Inc. - collaborative effort to test the effect of Biozome S-200, a micronutrient fertilizer, on rootcrops.

## Acquisitions

- PhilRootcrops acquired a general-purpose incubator, protein electrophoresis, biological safety cabinet, refrigerator, computer, and monitor.
- NARC purchased a UPS, CD Writer/DVD Reader, 1 laminar airflow chamber and a laminar flowhood; repaired its distilling apparatus and airconditioning system of its vehicle; and constructed 10 culture cabinets and extension of greenhouse structure for tissue-cultured plantlets.



The biological safety cabinet of the PhilRootcrops.





The newly acquired equipment of NCRC-V (clockwise): sound system component, other laboratory equipment, LCD, and oscilloscope.

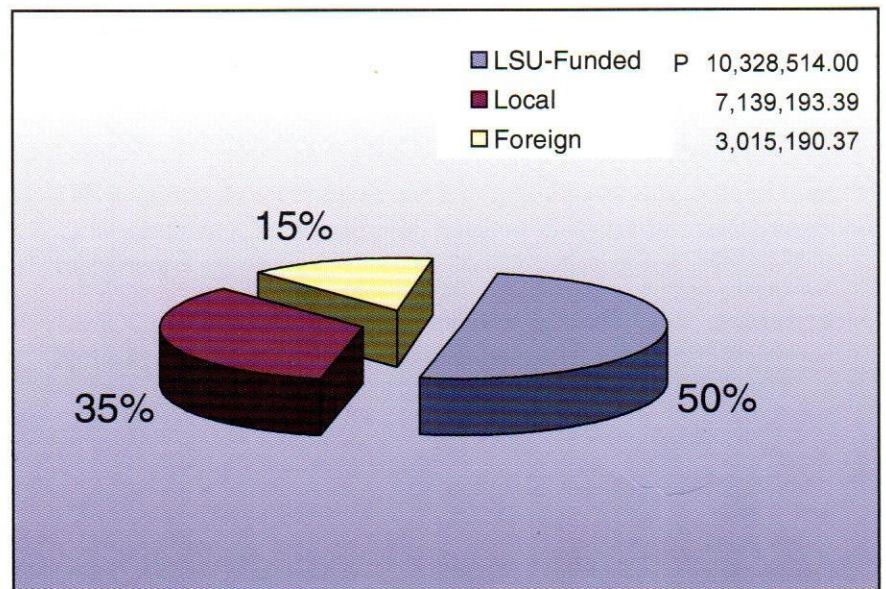
- NCRC-V acquired a complete set of sound system for training purposes, an LCD for power point presentation, oscilloscope for trouble shooting of laboratory equipment, temperature sensor, and weighing scale; constructed a multi-purpose concrete pavement, functional kitchen, computer room, library, and display area.
- ISRDS bought 1 scanner, repaired its mimeographing machine, and renovated the building facade.
- FARMI acquired Pentium 4 computer with 19-inch monitor, 1 set computer, 2 printers, embedded C Language development kit for the PICmicro MCU, WARP 13 PIC Programmer, digital camera, fax machine, and view sonic monitor.
- ITE acquired 2 pieces mask and snorkel, 2 pairs fins, 3 pairs booties, Lunz sampler, CPOM sampler, nutrient analyzer kit, and compound microscope.
- MMDC purchased 17" computer monitor, quantum cable, network cable, hardisk, computer memory, and sound blaster.



**TABLE 5. NUMBER OF R AND D PROJECTS/STUDIES BY FUNDING AGENCY**

Funding Agency	Number of Projects/Studies	Percent (%)
A. LSU-Funded (GOP)	56	32.37
B. Foreign Funded		
ACIAR	11	6.36
GSBS/BCL	1	0.58
CAST	1	0.58
CICRED-FAO	1	0.58
EURONATURE	1	-
GTZ-LIP	1	0.58
IFAD/ICRAF	1	0.58
IFS	1	0.58
ISAAA/PCARRD	1	0.58
NIH, USA	1	0.58
TWAS/LSU	4	2.31
USAID/P-CRSP	1	0.58
TUAT/LSU	1	0.58
UPWARD	1	0.58
USAID THRU PHILRICE	4	2.31
SUB-TOTAL	30	17.34
C. Local Funded		
BAR	33	19.08
CHED-ZRC	3	1.73
CIRDUP-DA	5	2.89
DENR	8	4.62
DOST/PCARRD/BAR/LSU	1	0.58
LAMP	2	1.16
PCARRD	2	1.16
PCASTRD	2	1.16
PCC/DOH	1	0.58
PCRDF	1	0.58
PHILRICE	2	1.16
PHILRICE/DA-RFU-8	2	1.16
PHILRICE/LSU	2	1.16
WORLD VISION DEV'T. FOUNDATION	1	0.58
SUB-TOTAL	65	37.57
D. Side Study	22	12.72
GRAND TOTAL	173	100.00





**FIGURE 1. R AND D BUDGET, CY 2003**



# Extension

Despite the decrease of its CY 2003 budget for extension function, the University skillfully carried out its extension tasks for the benefit of the rural clientele.





In view of its proven competence in technology generation and promotion, LSU was accredited by the Department of Science and Technology - Technology Application and Promotion Institute (DOST-TAPI) as one of the SCUs to implement the Small Enterprise Technology Upgrading Program-DOST Academe Technology-Based Enterprise Development (SETUP-DATBED) program. This program funds technology promotion and entrepreneurial projects of graduating students and young professionals.

The University implemented in March 2003 four technology promotion and commercialization projects funded by the LSU-LBP Technology Promotion Center worth P433,728.33. The LBP-TPC Technology Promotion Team (TPT) likewise indorsed in December 2003 another three projects for funding and implementation in 2004.

The Mobile Animal Health Clinic of the College of Veterinary Medicine (CVM) was revived in response to requests from local government units (LGUs) for CVM's technical services. The Production of Multimedia Materials for Root Crop Technologies was added to the Integrated Extension Program for Rootcrops and two projects were likewise added to the Natural Resource Management (NRM) program.

Four issues of the R & E Highlights were published during the year. Leaflets promoting newly generated technologies and brochures on high-value vegetable and fruit crops were produced and disseminated to the visitors through the VICARP TechnoGabay Centers. A video documentary highlighting the performance of outstanding farmers like the UGMAD awardees was made and shown to inspire/motivate farmers and other rural clientele.

Technoguides, handouts, pamphlets, leaflets, and brochures produced and distributed by LSU departments and centers.



## Technology Demonstration Farms

In addition to the existing technology demonstration farms of the University, the Department of Horticulture (DOH) established a project on Protected Production of High-Value Vegetable Crops with financial support from a private firm to demonstrate the profitability of the said crops. DOH also demonstrated its technology on Flower Induction of Mango for Off-Season Production through a training which was organized by VICARP and LSU-OVPRE and participated in by LGU representatives and VICARP-member agencies (Table 6).

**TABLE 6. TECHNOLOGY DEMONSTRATION FARMS ESTABLISHED/SHOW-CASED BY SOME UNITS OF LSU**

Center/Department	Name of Farms & Location	Crops
DOH	Mercado's Farm, Maasin, So. Leyte	Mango, rambutan
	Guerrero's Farm, Matalom, Leyte	Mango
	Delos Reyes' Farm, Bato, Leyte	Mango
	LSU-Villaba Campus' Farm, Villaba, Leyte	Mango
	Zaldivar's Farm, Albuera, Leyte	Mango, rambutan
	Codilla's Farm, Domonar, Ormoc City	Mango, durian
	Perez' Farm, Merida, Leyte	Mango
	LSU-Isabel Campus' Farm, Isabel, Leyte	Mango
	Pastor's Farm, Palompon, Leyte	Mango
	LSU Pomology Project, Visca, Baybay, Leyte	Mango, rambutan, mandarin, calamansi, jackfruit, durian
	LSU Coffee Project, Visca, Baybay, Leyte	Coffee
NCRC-V	LSU Coconut Demo Farms, Visca, Baybay, Leyte	Coconut and annual intercrops (ampalaya & squash); coconut and perennial crops (black-pepper, pineapple, banana, lanzones, lemonsito)
	Makapuno demo area (0.6 ha.), Visca, Baybay, Leyte	VMAC 1, VMAC 2 & high value intercrop (pineapple)

## Herbarium & Botanical Garden

The Department of Biological Sciences (DBS) accessioned 4,000 herbarium specimens and identified and labeled 360 plants at the LSU Nature Park.

## Pesticidal & Medicinal Garden

This new project was established to showcase various plant species with pesticidal and medicinal value. The Department of Pest Management started collecting botanicals for the project.



The herbarium specimens of the Department of Biological Sciences.



## Summer Sports Program

The Division of Sports and Athletics of the Institute of Human Kinetics (IHK) conducted the following: Milo Summer Sports Program in Badminton with support from the Philippine Badminton Association (PBA) - to teach the fundamentals of the sport and basic pre-tournament skills; Kids' Football - to promote football in the community and to discover and develop the talents and skills of children; 1<sup>st</sup> Congressional Football League in the Municipality of Baybay, Leyte - to promote football in the province of Leyte and make Baybay as the Football Center in Western Leyte.

## Trainings

Self-liquidating trainings were conducted during the year with support from LGUs and line agencies of the government and from special projects.

- US Peace Corps volunteer, Scott Lee Clark, continued conducting scuba diving training to Marine Biology students and staff involved in coastal conservation.
- The LSU Radio DYAC trained eight (8) prospective volunteer broadcasters from barangays Bubon, Bunga, Cantagnos, Gaas, Guadalupe, Hipusngo, and San Agustin in Baybay, Leyte and Cadaohan, Ormoc City on radio broadcasting from November 3 to December 2, 2003.
- The different centers, colleges, and departments continued to serve various clientele groups through trainings, seminars, briefings, workshops, and clinics in their respective fields of specialization (Table 7).



One of the trainings of PhilRootcrops.

## Technical Services/Assistance

Despite lack of funds for travel, the different centers and departments of the University provided technical services to various development stakeholders not only in the region but also in other areas that need LSU's assistance. Most of the requesting parties shouldered the transportation expenses and food of LSU experts.

- ITE trained Southern Leyte State College of Science and Technology (SLSCST) staff on coastal resources management and intensively promoted environmental protection endeavors such as the use of local tree species to rehabilitate denuded forests, biodiversity conservation, and capability building and community organizing of the barangays near LSU. One of its phycologists was tapped as member of the Provincial Seaweed Development Council of Region 8.
- IHK conducted basketball officiating and sports management clinic to the SK members and out-of-school youth in barangays of Baybay, Leyte (Bunga, Pangasugan and Sabang); taught basic ballroom dancing to Barangay Pangasugan officials and out-of-school youth; and conducted workshop on *Hataw Bayan* fitness activities to the municipal employees of Baybay.
- ISRDS conducted technical assistance to Barangay Health Workers (BHWs) on data analysis and tabulation of benchmark survey; NGOs, LGUs and POs on environmental advocacy; CENVIARC researchers



**TABLE 7. TRAININGS CONDUCTED/SERVICES RENDERED BY DEPARTMENTS/CENTERS, CY 2003**

DEPT/CENTER	TITLE OF TRAINING	TYPE OF CLIENTELE	NUMBER OF PARTICIPANTS
PhilRootcrops	Yam Production; Cassava Production and Processing; Ubi Production; Rootcrop Production; Processing and Utilization; and providing orientation on rootcrop technologies	Farmers, housewives, OSY, students, LGU staff, POs, NGOs, gov't. employees, DA technicians, entrepreneurs	1,301
National Abaca Research Center	Abaca Production, Management and Postharvest Processing; Abaca Disease Identification and Control; Abaca Disease Management and Rehabilitation Program; Abaca Breeding and Improvement; Abaca <i>Bacbac</i> Twine & Craft Development; Abaca Waste Utilization; Abaca Pulping & Fiber Characterization; Abaca Handicraft and Fibercraft Making; Ropemaking & Other Fiber Products; and Christmas Décor Making; technical briefings	Farmers, LGU officials, FIDA technicians, students, teachers, coop members, PASAR staff, housewives, SPMI laboratory technicians, agricultural technicians	419
National Coconut Research Center-Visayas	Coconut Production, Processing and Utilization; Coco Coir Production; Simple Farm Record Keeping; Farm Business Analysis; briefings on embryo culture on makapuno, coconut varieties, coconut handicraft processing, production of high quality copra and charcoal, inter-cropping under coconut, production and management of coconut plantation	Coconut farmers, students, teachers, entrepreneurs, extension/development workers, LGU officials, gov't. employees, private individuals	639
Farm and Resource Management Institute	Soil and Water Conservation Technologies for Marginal and Upland Areas; Leadership and Project Management; Mango/Banana Production; survey of proposed drinking water system project; GIS services like map generation and printing of posters.	Farmers, agricultural technicians, students, researchers	346
Institute of Tropical Ecology	Presentation & Validation of Results of Monitoring Marine Resources of Sanctuaries of So. Leyte; Environmental Education, Capability-Building for Coastal Resources Management for SLSCST; Participatory Monitoring of Marine Sanctuaries; Hog Fattening & Swine Dispersal; Bread and Pastries Baking; orientation on rainforestation farming to rainforestation areas; monitor water quality, marine ecosystems, and nature trekking	Municipal & Barangay LGUs, staff of SLSCST, fisherfolks, Haribon clientele, students, pupils, scouts	2,135
Institute for Strategic Research and Development Studies	Barangay Development Planning; Basic Water Rights; Groundwater Congress in the Visayas; Water Tenure and Water Rights; Eastern Visayas Regional Consultation on Water Resource Management; GAD Orientation; Skills for Life; NFEA & E System Orientation; Partnership Consultation; National WSAP Conference; Tri-sector Partnership & Public Fund Raising; AEFEP Assessment; Love, Sexuality and AIDS	LSU students & staff, OSY, MSWD officers, barangay officials, BHW, elementary teachers, LGU/NGO/PO representative, lay ministers, researchers, AEFEP staff	1,102
Institute of Human Kinetics	Basketball Officiating and Sports Management; Tennis Officiating; Basic Ballroom Dancing; <i>Hataw Bayan</i> Fitness Activities; Management of Tennis Competition	SK members and OSY, Brgy. Sports Council, municipal employees, Leyte tennisters	197
Multi-Media Development Center	Microsoft Excel for Grade Computations and PowerPoint Presentations; Orientation on Learning and Technology; Educator's Workshop on Project Water Education for Teachers and Project Learning Tree	LSU faculty/staff, high school principal, teachers and trainers from Leyte and Bohol	69



Participants of the Round Table Discussion on Water Rights & Water Tenure.





Participants of the training on Bioorganic Fertilizer Production and Entrepreneurship Development for Women in Region 8.

DEPT/CENTER	TITLE OF TRAINING	TYPE OF CLIENTELE	NUMBER OF PARTICIPANTS
Dept of Agron. & Soil Science	Chemical Safety for Laboratory Workers; Soil Fertility Management	Students, farmers, researchers	77
Department of Animal Science	Updates on Livestock and Poultry and Management; Hog Raising, Production and Management	Farmers, agricultural technicians	125
Department of Development Communication	Desktop Publishing; Instructional Materials Development; Research Writing; Summer Visual Arts; Basics in Radio Program Production; Campus Journalism; Radio and Responsible Broadcasting; DYAC Broadcast Programming; DevCom research	Professors, researchers, students, pupils, extension communicators, farmers, media practitioners, LGU officials, program handlers	470
Department of Family and Consumer Sciences/ BIDANI	Coordination/collaboration/liaison activities; advocacy with line agencies; technical backstopping to MTAC in the operationalization of BIDANI strategies, sectoral strategic meeting, re-orientation on BMIS; technical backstopping to Municipal/City Nutrition Council; technical assistance to MNC nutrition related activities	LGU officials, Barangay Council, mothers, children, SK members, BHW, BDC, midwives/nurses, nutrition council, pre-schoolers, barangay residents	3,852
Department of Genetic Res. & Plant Brdg.	Farm scientist program, trainors' training, farmers' field school, CPAR farmer's field day in Dumaguete	Farmers, agricultural technician	240
Department of Horticulture	Ornamental/Ferns and its Allies/Cutflower/ Foliage Plant/Orchid/Fruit Crop/Banana/Mango/ Vegetable/Off-Season Vegetable Production & Management; Dish Garden, Terrarium, Indoor Plants and Growing Management; Cut-Flower Arrangement; High Value Vegetable Production & Postharvest Management; Orchard Establishment & Management; Asexual Propagation of Fruit trees; Nursery Management; Coffee Production & Primary Processing; Bioorganic Fertilizer Production & Entrepreneurship for Women	Students, teachers, gov't. employees, growers, housewives, farmers, rural women, businessmen, coop members, and LGU officials	1,538
Dept. of Pest Management	Pest diagnosis; assisted in the rice black bug light trapping activities	Farmers, students	34
Department of Business Management	Record Keeping of Business Sales and Purchases; Swine Farm Record Keeping; Swine Production & Management; Record Keeping and Acctng. of Business' Daily Income and Expense Transaction; Economics of Corn Production; Bio-organic Fertilizer Production and Entrepreneurship Development for Women in Region 8; Entrepreneurship and Business Planning; Recording and Accounting of Business Transactions for the Women's Rural Improvement Club (RIC)	Farmers, agricultural technicians, rural women, beneficiaries of coastal-based resource management project, peanut processors	323
Department of Economics	Monitor prices of basic commodities in public market, assisted in the implementation of livelihood projects in selected coast, assisted in the preparation of project feasibility studies on Citronella	Fisherfolks, businessmen, market consumers	10
Department of Computer Science and Technology	Application of Excel Program for Grade Computation and Audiovisual Aids Preparation, Excel and Power Point Programs	Faculty members, clerks and other LSU personnel	90



DEPT/CENTER	TITLE OF TRAINING	TYPE OF CLIENTELE	NUMBER OF PARTICIPANTS
Department of Food Science & Technology	Food Product Processing from Rootcrops; Rootcrop Production; Processing and Utilization; Sweet Potato Food Processing; Fruits and Vegetable Processing; Fruit Juices and Purees/ Rootcrop Product Processing; Food Quality and Safety; Good Manufacturing Practices; GMP and SSOP; Non-optimized Peanut Products; Record Keeping	Farmers, housewives, DAR employees, WPPA members, JOBARD's workers, GTZ-DTI beneficiaries	315
College of Forestry	Nursery Establishment and Maintenance; agroforestry; community/Smallholder Forestry; National Agroforestry Congress; Micro-financing for Smallholder Forestry; ACIAR Operational Project Planning; General Assembly of the Phil. Agroforestry Educ. and Research Network	Farmers, employees, faculty, ACIAR research staff, LSU, LGU officials	333
Department of Biological Sciences	Specimen Identification	Graduate/undergraduate/ high school students, professors	43
Isabel Campus	Basic welding	Out-of-school youth	30

on data analysis and interpretation for their project; and LGU officials of barangay Gabas and Patag on conflict resolution of water source. It also assisted Barangay Guadalupe officials in sourcing fund for their barangay road-concreting project.

FARMI, in collaboration with the International Center for Research in Agroforestry (ICRAF-Visayas), provided assistance in conducting Participatory Technology Development (PTD) and technology promotion to local farmer groups or *alayons*, planning and implementation of projects of the Office of Provincial Agriculture – Leyte and the Rural Development Institute (RDI) of Ormoc City, and orchard establishment/management, flower induction and fruit management to orchard owners/farmers.

NARC conducted capability building programs/activities for abaca farmers and housewives, coop members, technicians, students, and LGU officials; briefings/lectures on abaca production and disease management; and information caravans in 36 barangays of Baybay, Hilongos, and Inopacan, Leyte. It also extended consultation services to different government and non-government agencies and private organizations on abaca postharvest processing, laboratory analysis of abaca pulp, disease management/control, and abaca production/management.

NCRC-V taught land owners and farmers on the appropriate planting distance and fertilizer application for coconut; assessed the status and the possibility of reopening the coconut oil mill in Anahawan, Southern Leyte; monitored the growth and general performance of the palms of a clientele's coconut seedgarden; and gave recommendation to a landowner on his coconut plantation intercropped with fruit trees.

PhilRootcrops provided continuous assistance to sweetpotato farmers in Dulag, Leyte and the neighboring towns, and to the CIMPC Feedmill staff in Tudela, Camotes, Cebu. It also trained farmers, LGU officials, government employees, researchers, entrepreneurs, students and other interested clientele on rootcrop technologies.



Workshop on root crop flour processing.





The Soil Research, Testing and Plant Analysis Laboratory at the DASS.

- COF extended technical support to the municipalities of Inopacan (on nursery and field trial research-cum-extension) and Isabel (on drafting its community-based watershed development and management plan). It also worked with the Leyte Provincial Government on the implementation of the Leyte Island Program, and helped farmers through consultation and other support services in the field of forestry and environment.
- DOH provided assistance to 11 farm owners in the different Leyte municipalities on orchard establishment and cultural management and setting up of bio-organic fertilizer (BOF) production enterprise.
- DASS assisted farmers, students, researchers by analyzing their plant and soil samples and giving recommendations based on analysis results. It also gave lectures to visitors on the importance of soil and plant tissue analyses.
- BIDANI coordinated/collaborated with some departments/units of LSU in the implementation of extension projects and tapped their technical expertise in the implementation of development projects/activities of LGUs. It likewise strengthened working relationship between and among sectoral groups of the municipal and barangay LGUs thereby enhancing their capability in governance. Furthermore, it facilitated the integration of nutrition concerns in the development plans and programs of barangay LGUs.
- DAE assisted in putting up barangay lighting systems through the *Ilaw Project*.
- DCST provided consultancy services on computer operations to different LSU offices and developed EXCEL programs to automate the computation of QCE for NBC 461 and teaching performance evaluation system.
- DOE helped farmers' organizations and entrepreneurs improve their skills for effective enterprise management and enhance their productivity and socio-economic conditions. It also assisted agribusiness entrepreneurs as well as LGUs and fisherfolks in the management of coastal resources.
- DBM assisted farmers on record keeping of business sales and purchases, recording and accounting of business transactions, and daily income and expense transactions.

### Fabrication of Processing Machines

NARC fabricated and distributed 35 units of slicers and shavers to cooperatives in Lapulapu City, Negros Oriental, and Leyte; 40 units of spinning wheel (*bilyo*) for twisting *bacbac* to abaca farmers and housewives in Brgy. Lake Danao, Ormoc, Leyte; and 3 units portable stripping machines.

### Exhibits and Flower and Garden Shows

DOH organized and coordinated the 2003 LSU Flower and Garden Show as part of the University's anniversary activities and participated in garden shows in Ormoc City and Baybay, Leyte as well as agri-fairs in Palo, Merida, Tacloban City, and Manila.



Winning entries of the dish garden contest during the Flower and Garden show.



To showcase its technologies, the LSU Main Campus maintained its stationary exhibits at the RDE Building; and its research centers, namely: PhilRootcrops, NARC, and NCRC participated in off-campus agri-industrial fairs and exhibits such as those held in Palo, Leyte, Tacloban City, Ormoc City, Manila, and Cebu City.

## Distribution of Planting Materials

Planting materials like seeds, seedlings, plantlets, cuttings, etc. were produced and distributed to the different clientele for free or at minimal cost by the following center/departments of LSU: **DGRP** - 2 tons seeds of ViSCA Maize Var. 2 to Cebu Province; 200 bags of quality lowland rice varieties to farmers and seed growers in Region 8; **DASS** - 212 kg corn, 62 kg upland rice, 25 kg mungbean, 1 kg Peanut (Moket), 1.5 kg soybean, 0.75 kg millet, 1 kg sorghum; **DOH** - 26.55 kg vegetable seeds, 459 grafted fruit trees, 503 marcotted fruit trees, and 173 seedlings of fruit trees; **NARC** - 100 abaca seedpieces and 383 tissue-cultured plantlets; and **PhilRootcrops** - 103,000 sweetpotato cuttings, 2,900 gabi setts, 1,000 cassava planting materials, and 3,000 kg of yam/ubi.

## Extension Highlights

### Laboratory Analysis of Soil and Plant Samples

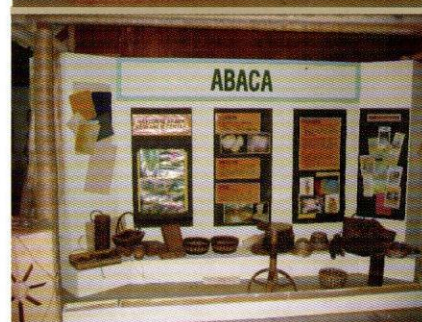
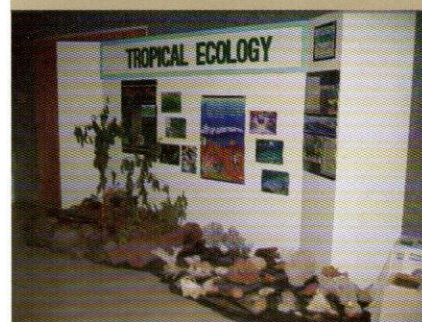
The Soil Research, Testing and Plant Analysis Laboratory of DASS analyzed 318 soil samples, 25 plant samples, 16 organic materials, and 3 lime samples submitted by researchers, students, farmers, private firms, individuals, and non-government organizations (NGO) for analysis.

### Rice and Corn

There was a region-wide adoption of LSU-produced quality rice variety called "Mestizo" and ViSCA Maize Var. 2 by seed growers and producers; and farmers' corn yield increased from 1 ton/ha to 3 tons/ha.

### Farmers' Field School (FFS)

The Farmers' Field School as a new paradigm in research and extension was observed to be a good mechanism for the horizontal scaling up of technology dissemination through the training of trainers (TOT), which could be effected in a wider geographic area. The FFS participants had the capability to apply their knowledge, skills and competencies learned during the TOT. However, the scaling up process was not realized due to lack of support from LGUs and unavailability of funds for the conduct of FFS, weak commitment of the local government officials and facilitators, and TOT participants' and facilitators' official status, influence and political affiliation, professional level, and educational attainment.



The exhibits at the RDE Building of the LSU Main Campus.



## Kontra Alkoheres

The project was implemented to control/minimize the spread of abaca bunchy top disease that destroyed abaca plantations in Bicol, Mahaplag in Leyte, and Sogod in So. Leyte and has already spread to other parts of Leyte and So. Leyte. The *Kontra Alkoheres* team conducted massive campaign regarding the problem and worked hand in hand with the officials of FIDA, DA, LGUs and the local farmers. It likewise planned to produce a map showing the bunchy top-infected areas in Leyte and So. Leyte which could be useful in preventing further spread of the disease.

## Pest Clinic

This project helped farmers and other clientele in solving pest-related problems. Submitted plant samples were diagnosed and recommendations were given on the proper action against the identified pests/diseases. The Subject Matter Specialist also visited some barangays with pest problems and met with the farmers. Information campaigns to control rice black bug were made and series of light trapping were also done to minimize their build up at the LSU campus and neighboring barangays.

## Coastal Resources Management Project of Baybay, Leyte

To strengthen their capabilities in managing and monitoring marine resources, fisherfolks representing 11 communities of Baybay, Leyte were trained on participatory monitoring of coastal resources. They were strongly supported by LGU officials and provided with paraphernalia to monitor the status of their areas' resources.

## Development of LSU as an Adventure Destination and Nature Park

LSU has already gained reputation as a local tourist destination and has been included under Package C of the Travel and Tours Program of the Leyte Provincial Government. Hence, the program launched LSU's Nature Park, put up park billboards and signs, labeled trees in the Ecopark and Nature Park with their local and scientific names, constructed road block and guard house, attended to visitors' request for nature trekking at LSU, conducted series of environmental education campaigns and tree planting, and produced a video documentary of the Mt. Pangasugan as the only remaining virgin forest in the region.



Launching of LSU's Nature Park.

## Barangay Integrated Development Approach for Nutrition Improvement (BIDANI)

This unit played a significant role for the success of its clientele town - Hindang, Leyte which earned an award as Consistent Regional Outstanding Winner in Nutrition (CROWN) given by the National Nutrition Council



(NNC). It mobilized the Municipal Technical Action Committee (MTAC), an organizational machinery in the operationalization of BIDANI strategy composed of the legislative and executive bodies in Hilongos, Leyte, and some sectoral committees/groups in the municipalities of Albuera, Hindang, Bato and Matalom, Leyte in adopting the BIDANI strategy. The BIDANI-covered municipalities served as training facility for students in extension. LSU-BIDANI also re-energized its satellite institutions in SLSCST, So. Leyte and LSU-Isabel Campus, Isabel, Leyte.

### Affiliated Non-conventional Energy Center (ANEC) at LSU

The Center revived the operation of its bio-gas project with piggery manure as the continuous source of methane. *Ilaw Projects* were established at barangays Monte Rico in Baybay and Balugo in Capoocan, Leyte where 3 channels of solar battery charger and lighting fixtures were installed in 30 households in each barangay.

### Smallholder Forestry Research cum Extension Project

The project conducted community organizing work and participatory training-workshop for the people of Brgy. Conalum, Inopacan, Leyte; established nursery, tree farm, and agroforestry demonstration sites; provided technical support to People's Organization (PO) on seedling production as livelihood; and developed an extension material entitled "Smallholder Forestry Info Kit."

### Capability Building for Barangays Within the Vicinity of LSU

Technical assistance was extended to the officials of Barangay Guadalupe, an adjacent barangay of LSU, in their activities to source funds for their road concreting project. LSU constituents, barangay residents, and former residents of the barangay who are now living in cities and abroad responded formally to the campaign. Assistance was also afforded to LGU officials of Barangay Gabas and Patag on conflict resolution of water source. Under this barangay capability building endeavor, five (5) barangay leaders were encouraged to join the Leyte Island Partnership for Poverty Reduction (LIPPR) initiated by the La Liga Policy Institute in collaboration with ISRDS. Likewise, four (4) barangay leaders were also able to participate in training workshops, and some gardeners in barangays Patag and Guadalupe were made to join local garden shows/exhibits to provide them additional income and expose them to new gardening techniques.

### GAD Extension Project

The Gender and Development (GAD) Program conducted orientation seminars for DepEd elementary teachers of Baybay, Barangay Health Workers (BHW), and lay ministers of the Immaculate Conception Parish, Baybay, Leyte; and co-sponsored the 4<sup>th</sup> Women's Studies Association of the Philippines (WSAP) National Conference which was held at LSU.



Ms. Carina Z. Santiago, National Nutrition Council - Region 8 Officer-In-Charge, congratulates Hindang town constituents led by Hon. Roy Jumao-as, Town Mayor, for obtaining the award as Consistent Regional Winner in Nutrition (CROWN) in Region 8.



La Liga Policy Institute-Poverty Reduction Workshop with LGUs & NGOs.



## Pilot Commercial Production Models for Coconut-Based Food Products

Pilot commercial processing models for the production of the LSU CocoFresh and the Makapuno-Sweet Potato Jam were maintained. The quality of CocoFresh was optimized by improving its shelf life and the product was commercialized in pilot scale. The project also started to produce for the market 100 bottles each of the Sweetened Makapuno Strips and Makapuno-Sweetpotato Jam.



Bottles of Sweetened Makapuno Strips (top); and Macapuno-Sweet Porato Jam (bottom).

## Product Promotion and Market Expansion

The Department of Food Science and Technology expanded its product market outlets to include Gaisano-Ormoc, Tacloban Airport, and PROMDI DELI in Cebu City; repaired and renovated the LSU Bakery; and expanded markets for peanut brittle/praline to help peanut entrepreneurs.

## Agri-Entrepreneurship and Functional Education Program

Youth learners and facilitators under the Agri-Entrepreneurship and Functional Education Program (AEFEP) were given honor and tribute during the "Recognition Day" on September 3, 2003. The event was participated in by 160 out-of-school youth, 23 instructional managers, and MSWDOs and project staff.

## Linkages

LSU strengthened existing collaborations and established new linkages with the following institutions to generate support/resources for the smooth and effective implementation of its programs/projects:

- Department of Environment and Natural Resources (DENR) and the Local Government Unit of Mahaplag, Leyte on the implementation of the "Assisted Natural Forest Regeneration, Rainforestation and Agroforestry Project" in a 198-hectare land at Brgy. Hiluctugan, Mahaplag, Leyte.
- Department of Agrarian Reform (DAR), University of Eastern Philippines, Department of Agriculture (DA), Land Bank of the Philippines (LBP), Department of Trade and Industry (DTI), Department of Science and Technology (DOST), Cooperative Development Authority (CDA), and Technical Education and Skills Development Authority (TESDA) - on the establishment of Farmers Bayanihan Center for Rural Development (FBCRD) in LSU and UEP.
- Consuelo Foundation, Inc. - for the implementation of the project entitled "Alternative Learning System for Rural Out-of-School Youth in Western Leyte."



# General Administration

The LSU General Administration provides the needed management strategy in response to development priorities in instruction, research, extension, and production. It is composed of the Office of the President (OP), Office of the Vice President for Academic Affairs (OVPA), Office of the Vice President for Research and Extension (OVPRE), and Office of the Vice President for Administration and Finance (OVPAF) and the offices/units under them.





## OFFICE OF THE PRESIDENT

The Office of the President (OP) supervised the overall program operation and budget use of the University System.

1. The offices under the **Assistant to the President for Corporate Planning and Income Generation** carried out their respective responsibilities and assignments.

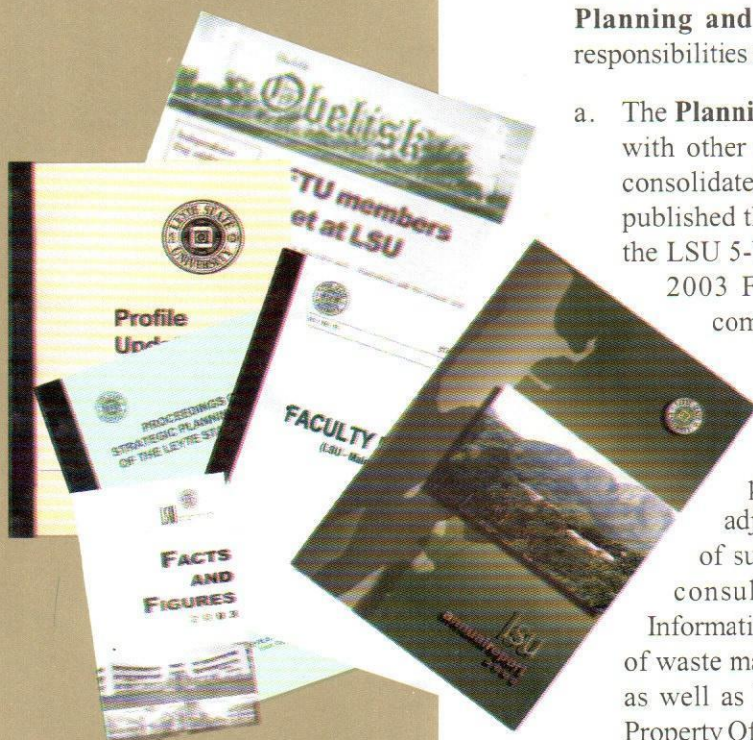
- a. The **Planning Office** consolidated and published, in coordination with other offices, the 2002 Annual Report of the University; consolidated and published the 2003 LSU Profile; updated and published the 2003 LSU Facts and Figures; started consolidating the LSU 5-Year Development Plan (CY 2004-2008); updated the 2003 Faculty Profile; and assisted various University committees.

- b. The **Internal Control Unit** conducted cash audit examination of LSU Hostel and VEFI Bookstore funds; reviewed monthly reports of income generating projects; cross-checked employees' notice of salary adjustments and step increments; witnessed public bidding of supplies, spare parts, office and laboratory equipment, consultancy/architectural services and contracting of Information Technology (IT) building; and witnessed the disposal of waste materials and public auction of unserviceable properties as well as bi-annual inventory of supplies and materials of the Property Office, breeding animals, and other farm products of IGPs.

- c. The **Income Generating Projects Office** monitored various projects of the University and recorded a total income of P9,186,003.44, which was 19.76% higher than previous year's income. Five RF projects contributed P7.1 M to the income while the 27 non-RF projects gave a net of P2.1 M. The top five earners were the Pavilion - P3.111 million, Hostel - P1.050 M, Coconut - P2.273 M, Printing Press - P482,287.94, and Rice Project - P180,373.50 (Table 8). The Office provided project managers with simplified format in the preparation of CY 2003 annual report and CY 2004 plans and programs; landscaped the LSU Market plaza and built drainage systems; repaired the window screens, water system, leaking roof and non-functional ceiling fans, fluorescent lamps and other fixtures in the Fast Food Center and LSU market; and facilitated the collection of accounts of delinquent concessionaires.

- **The Guest House and Pavilion Management** facilitated the repair and repainting of the Guest House and the Pavilion, and purchased hardwood dining table and chairs, center table, 3 couches, 10 lampshades, and 4 stand fans. It generated a gross income of P3,111,368.45 from catering services.

2. The **Office of the University Secretary (OUS)** facilitated and took minutes of 6 Board of Regents, 7 Administrative Council, and 4 University Academic Council meetings.



Publications produced by the Planning and Information offices.



The newly landscaped LSU Market Plaza.



**TABLE 8. INCOME OF PROJECTS MONITORED BY THE IGP OFFICE (2001-2003)**

Projects	2001	2002	2003	% Increase/ (Decrease) 2002-2003
<b>A.1 RF-IGP</b>				
Pavilion	3,658,993.36	3,349,682.45	3,111,368.45	0.71
Hostel	1,080,306.82	1,036,043.98	1,050,606.00	1.41
Printing Press	615,513.43	699,323.20	482,287.94	(31.03)
Coconut	-	625,935.80	2,272,827.94	263.11
Rice	172,331.09	274,108.50	180,373.50	(34.19)
SUB-TOTAL	P5,527,144.70	P5,985,093.93	P7,097,463.83	18.58
<b>A.2 Non-RF IGP</b>				
LSU Market		444,732.86	396,423.27	
Manila Lodging		170,780.00	193,405.00	
Ornamentals		126,445.28	48,621.00	(As of May '03)
Cebu Lodging		111,040.00	105,770.00	(As of Nov '03)
Bindery		96,379.05	98,401.70	(As of Nov '03)
Infirmery		92,083.00	105,118.00	
Rootcrops		94,154.24	118,880.72	
Convention Center		78,688.90	122,709.00	
DASS (Soil Lab.)		61,081.30	88,684.00	(As of Oct '03)
Beef /Carabeef		58,404.00	52,347.50	
Horti Nursery		54,042.00	56,426.00	
Recreation Center		52,438.25	56,571.50	
Corn Seeds	36,855	46,915.00	60,925.00	
Library Fines	28,960.00	32,295.50	23,975.50	(As of Nov '03)
Goat/Sheep	12,984.00	7,980.00	300.00	(As of March '03)
Locally Grown Prod'n	17,231.00	31,914.00	33,782.55	(As of Sept. '03)
Makapuno	-	27,520.00	95,679.40	
SDMU	27,637.00	22,926.20	26,519.20	
PPO Shops	46,180.50	20,357.00	35,410.00	
Xerox/Handbooks	10,480.85	14,279.75	11,042.00	(As of Nov '03)
Coconut Food	-	10,448.00	4,211.00	
Vegetable Seedbank A	8,255.00	9,181.00	(no report submitted)	
FARMI Demo Farm	4,667.50	7,501.00	22,504.22	
High School Fines	6,659.50	6,507.50	6,357.05	
Coco Techno Training	-	1,777.00	11,802.00	
LSU Guest House	-	-	307,399.00	
Intercrops	-	6,269.40	6,075.00	
SUB-TOTAL	P1,436,476.59	P1,686,140.23	P 2,089,339.61	23.91
<b>GRAND TOTAL</b>	<b>P6,963,621.29</b>	<b>P7,671,234.16</b>	<b>P9,186,003.44</b>	<b>19.76</b>





The LSU Culture and Arts Center (CAC) performers in one of their presentations.

- a. The **Information Office** published 51 issues of the LSU Obelisk – a weekly publication, and one issue of the LSU Gazette, a University magazine; attended to 105 campus visit requests and tour guided 10,414 visitors; edited the LSU Annual Report and the 2003 LSU Facts and Figures; helped prepare documents required by higher offices/agencies; attended to requests of the Office of the LSU President; facilitated/spearheaded the preparation of programs/souvenir programs of the University; facilitated the collection of campus maintenance fee from visitors to boost the institution's budget for campus sanitation and upkeep; and coordinated/assisted various university committees.
3. The **Culture and Arts Center (CAC)**, in coordination with the LSU Folkloric Dance Troupe, produced and presented the following shows in different occasions: "Glimpse of the Philippine Culture, A Showcase;" "Cultural Extravaganza"; and the "TRIO." It also conducted the Art Exhibit - 1<sup>st</sup> Summer Arts Workshop, recruited/screened/trained members for the Drama, Dance Troupe, Choral, and Visual Arts groups, facilitated the Miss LSU 2003 Pageant; and actively participated in most university social affairs.
4. The **Legal Office** facilitated the filing of a petition on the Issuance of Second Owners Copy of TCT No. 86012 with the Registry of Deeds in Cebu City, worked on the termination of investigations, and resolved grievances through the Grievance Committee; assisted the Department of Horticulture in settling a theft case and the Seednet Project in reclaiming LSU rice fields from tenants; completed the investigation and resolution of an administrative case, terminated and implemented the decision on another administrative case, and issued formal charges to the different respondents.

#### OFFICE OF THE VICE PRESIDENT FOR ACADEMIC AFFAIRS (OVPA)

The Office of the Vice President for Academic Affairs (OVPA), together with the colleges in the main and satellite campuses and 10 offices, continued to uphold LSU's drive for academic excellence. It facilitated the selection of nominees for designated positions (i.e., OCIMD, ODAE, DBS, DDC, LSULHS, OSA, LSU-Isabel Campus), prepared and submitted proposals to offer Bachelor of Laws for approval by the BOR; coordinated the 24<sup>th</sup> Honors and Awards Convocation, selection of recipients of special awards and Latin honors during the commencement exercises and of the Anniversary Awards, holding of the Annual Academic and Anniversary convocations; facilitated the holding of the National Seminar Workshop on Teacher Education and NSTP with the Research and Educational Training Institute (REDTI); and facilitated/submitted data requested by CHED on institutional and faculty profile for the 1<sup>st</sup> semester, SY 2002-2003, institutional data on merit scholarship, and quarterly physical report of operation and quarterly performance target as required by DBM and CHED for the 2003 Survey of S & T Academic and Training Institutions.



1. The **Graduate School** published and distributed the Graduate Student Guidebook; conducted a seminar-workshop on *Outline/Manuscript Preparation*; revised and reproduced the Graduate School Information Bulletin and Manual on Format and Style of Manuscript; implemented the new policy on graduate students' written comprehensive examination; conducted a survey on prospective graduate students and information campaign for the graduate distance education program of LSU in Cebu, Iloilo, Davao del Sur and nearby towns in Leyte; published the Graduate Research Abstracts Vol. 4; had its proposals on the Revision of Graduate School Code, MS Rural Sociology and MS Tropical Ecology, and Amendments on the Guidelines in the Conduct of a Written Comprehensive Examination of Graduate Students approved by the LSU BOR; and reproduced/bound 168 copies of different study guides.
  
2. The **Office of Curriculum and Instructional Materials Development** (OCIMD) reviewed the new and revised curriculum proposals of the different units for endorsement to the University Academic Council; facilitated the approval of the Guidelines for Preparation of Instructional Materials; reviewed and endorsed faculty application for graduate studies scholarship and attendance to trainings/seminars/workshops; assisted the Academic Personnel Board in formulating an effective staff development program; approved permits to give examination or move class outside of regular schedule and application for request of curriculum; recommended requests for offering of unscheduled subjects and overloading; led the information drive for recruitment of freshmen and other incoming students; conducted scholarship examinations for incoming freshmen, and student leaders' information drive seminar; chaired the committee to study/design hoods for the masteral and doctoral degrees of the university; submitted a proposal to rationalize laboratory fees for courses offered in LSU; prepared a proposal to offer BS Biotechnology; reviewed the revised Entrance Scholarship Questionnaire and Brochure of the University to be used for student campaign; and chaired/assisted various University committees.
  - The **Multi-Media Development Center** (MMDC) facilitated the production of instructional materials; assisted in the production of video presentations about LSU, documentary of Mt. Pangasugan, and the 2003 *Ugmad* Awardee; assisted in the design/development of information brochure of the University Review Center and promotional materials of LSU's curricular programs; designed the power point presentation of the College of Agriculture during LSU's Career Guidance Seminar and LSU's programs for the 2003 Commencement Exercises and anniversary; and assisted Development Communication students in the production of their developmental dramas and radio documentaries.
  
3. The **Office of the Director for Accreditation and Evaluation** (ODAE) reviewed and monitored the workload distribution of faculty members in all academic departments/colleges including the four satellite campuses, as well as the workload of all part-time teachers, affiliate staff, and Graduate Teaching Assistants (GTAs); monitored the semestral performance targets and the performance evaluation of all faculty members under the LSU system; issued a memorandum requiring

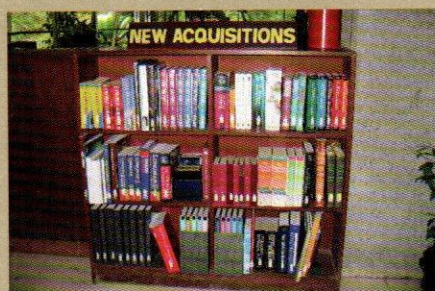


Dr. Lina T. Villacarlos, Dean of Graduate School (top), welcomes the Open University distance learners (bottom).





Mrs. Carmencita S. Reyes, Guidance Coordinator (top) during the Guidance Orientation and Echo Seminar for the LSU guidance counselors (bottom).



The newly acquired books and other learning materials of the University Library.

academic departments/units/centers/institutes to submit a staff development program and faculty succession plan; coordinated with the departments/units/centers/institutes in the processing of recommendations for faculty recruitment, development, and promotion; and spearheaded the conduct of the semestral teaching performance evaluation by students, processed the data, and summarized students' comments.

4. The **Office of Student Affairs (OSA)** recognized 51 campus organizations and coordinated 726 organizational activities; administered and interpreted students' admission and qualifying examinations in different curricular programs: BS Education - 62, BS Geodetic and Geomatics Engineering - 162, and BS Computer Science - 139, and psychological tests to 221 High School students, 11 transferees and 40 upper class students for vocational guidance. OSA's Student Lounge also served 2,339 students in their organizational and recreational activities. The Office appointed 87 faculty and staff as campus advisers; maintained linkages with 18 government and private agencies that supported a total of 500 scholars in the 1<sup>st</sup> and 2<sup>nd</sup> semesters, and established new linkages with 6 individuals and agencies that sponsored 33 scholars. The Office also supervised the repairs/renovations of student dormitories and fabrication of dormitory fixtures; facilitated the claims for medical reimbursement of 7 students from their accident insurance; processed the application of 118 applicants for student assistantships; and upgraded the competencies of 17 department-based guidance facilitators, 8 counselors, and 10 campus ministers through echo seminars and regular meetings.
5. The **University Library** processed and added into its database 1,241 titles of books and other learning materials, bringing the database entries to a total of 12,165; continued encoding the new accessions into the "CATALO" database in preparation for the computerization of library holdings; implemented the 60-hour-per-week library services to satisfy the AACCUP requirements and for the users to fully maximize the use of library resources; and published the *New Acquisitions* which listed all newly acquired library materials.
6. The **Office of the University Registrar** computerized the student registration and student records using the acquired software; introduced improvements to systematize and speed up the enrolment process; monitored 3,264 incomplete grades; implemented the advanced registration of students; attended to 8,753 varied requests of students; evaluated/updated 7,614 student records/checklist; and generated a gross income of ₱ 264,693.50 from its services.
7. The **Admission Office**, as the frontline student service office of LSU, responded to a number of inquiries from different sectors regarding the University's curricular offerings; admitted 1,398 freshmen, 102 transferees and 33 returning students for the first semester and 16 freshmen, 32 transferees, 53 returning, and 2 unclassified students for the second semester; received copies of leave of absence of 18 students; and coordinated the conduct of the LSU entrance scholarship examination in 28 testing centers in Visayas and Mindanao from October to November.



## OFFICE OF THE VICE PRESIDENT FOR ADMINISTRATION AND FINANCE (OVPAF)

The Office of the Vice President for Administration and Finance (OVPAF) supervised and coordinated activities related to management, maintenance, development and utilization of the human, physical, and financial resources of the main and satellite campuses of the University; assisted the Office of the President in mustering functional and sustained linkages with other agencies; initiated the preparation of the revised guidelines in the implementation of the Compensatory Day Off (CDO) among faculty and staff on vacation-sick leave status (main campus), proposed changes in the registration process and payment of school fees, spearheaded the installation of a stair railing at the Administration Building and construction of sidewalk between the Camia Cottage and Calachuchi Dormitory and front road of the Administration Building. The Office also conducted a "Survey on the Monthly Fuel Consumption of Colleges/Department/Offices/Centers/Institutes with Service Vehicles/Equipment Operating within the Campus" as basis in determining the allowable monthly amount of fuel to be used by said units and a "Comparative Study on Student Insurance Benefits Among the Proposals Submitted by Three Different Insurance Companies" as basis in determining the insurance company that caters to the best interest of LSU students; revised the Trip Ticket form to shorten the processing time and reduce the cost of production; and led the creation of functional committees of the University.

1. The **Office of the Director of Administration (ODA)** facilitated the conduct of the following seminar/symposium/training: "Reorientation Workshop for LSU Security Guards," two-batch training on "Career Personality Development for Clerks and other Administrative Staff," and Symposium with Solicitor Magdangal de Leon. ODA also chaired/assisted various University committees.
  - a. The **Cash Division** increased the collection of University income by more than 100% compared to the previous year; ensured prompt deposit of income to the bank; disbursed 100% of the Notices of Cash Allocation (NCA); and computerized the student account records and collection of income using the OPRAH program.



The stair railing of the Administration Building.



Dr. Lourdes B. Cano, Director for Administration, entertains questions from the security guards during the Reorientation Workshop.

Dr. Jose M. Alkuno, Jr., Vice President for Administration and Finance (inset), gives a message to the administrative personnel during the Career and Personality Development seminar.





The newly renovated Property Office (above) and newly painted Fuel Station (bottom).



Dental services of the Infirmary.

- b. The **Human Resource Management Office (HRMO)** facilitated the renewal of appointments of 82 temporary employees, reappointment of two personnel, and recruitment of 17 temporary/permanent and 29 part-time employees; changed the status, from temporary to permanent of 2 employees and from lump sum to plantilla items of 2 academic personnel; facilitated the promotion of 3 and reclassification of 20 administrative employees; and conducted trainings in MS Excel, MS Word and MS Power Point programs to administrative personnel in coordination with the Department of Computer Science.
- c. The **Records Office (RO)** issued a memorandum requesting the different departments, centers and offices to transfer to RO their non-current and valueless records; conducted an inventory of records; rendered efficient records reference service; mailed and delivered official mails; preserved and maintained permanent and vital records of the University; and sent a request to the Records Management and Archives Office (RMAO) for permission to dispose of old records.
- d. The **Property Office** renovated its office, façade, and stockroom; repainted the University Fuel Station, and put up landmarks of the office and fuel station; facilitated the creation of the Disposal Committees of the satellite campuses and oriented them on their functions; reconciled the inventory reports of the satellite campuses; facilitated the conversion of equipment account code with sub-classification of each major code in conformity with the New Government Accounting System (NGAS) issued by COA; established a policy on the transfer of property accountabilities of LSU employees and on the withdrawal of supplies and materials; disposed without cost old stocks of materials, supplies and equipment to satellite campuses and other departments; monitored fuel balances and immediate replenishment of fuel stocks and other oil products; delivered supplies and materials to end-users; handed down to satellite campuses serviceable equipment/supplies; and facilitated the disposal of items to LSU employees through bidding.
- e. The **Infirmary** served the University constituents and the neighboring barangays through health care services such as application of preventive and therapeutic medicine; conducted quarterly inspection of 22 dormitories and 20 food establishments; and served the following number of students, faculty/staff and their dependents, and outsiders through consultation - 4,559; physical examination - 5,174; immunization - 211; dental services - 2,799; other services - 1,932; and laboratory examination 1,257.
- f. The **Physical Plant Office** conducted major body repair of the University's Tamaraw FX and Toyota Datsun; overhauled 3B Toyota engine, Toyota 4K and Toyota HiLux; attended to 714 motor vehicle requests, 48 minor welding and 148 machine works; dispatched 1,980 official trips; repaired overhead primary and secondary distribution lines, airbreaker switch, pole line hardwares, pole and pad-mounted distribution transformer, street lights and security lights, and lighting fixture outlets of the upper and lower university campuses; repaired intake box water main lines, distribution lines at Mefe, Magdagook and Forestry reservoirs; repaired drainage and sewer lines, plumbing



fixtures and fittings of the university buildings; installed wirings, Christmas lights and parr lamps along the highway which generated 12,500 kw-hrs electricity; changed 200 batteries; attended to 105 requests for sound system services; repaired electronic and electrical equipment; repaired the administration building of the LSU-Tolosa campus, FARMI duplex, Guest House, DASS & DPM faculty rooms, DOE classroom, COF roofing, DOH office, DGRPB laboratory room, Germano cottage, and roofing of President's cottage and COF; concreted access roads of PCC, CVM, DPM and DASS buildings; repartitioned CVM's isolation room and DMPS faculty rooms and office; completed the reflooring and waterproofing of stage basement of the Gymnatorium; constructed entrance canopy of ISRDS; and fabricated chairs, tables, cabinets, and shelves.

## MANPOWER RESOURCES

A total of 301 regular administrative personnel provided management support to the three-fold university functions. During the year, some personnel were promoted/upgraded.

## TRAININGS

A total of 141 administrative staff members attended 84 international, national, regional, and local training/seminar workshops such as: career and personality development, cultural festival management, music clinic, campus journalism, computer training for Excel, MS Word and MS Power Point, FAO-AGRIS database, refresher course on WEBAGRIS, facilitating the adjustment of international students in the Philippines, Advanced Higher Education Administrators Development (AHEAD), radio and responsible broadcasting, Philippine Association of Agriculture Education (PASSAGE), ACAP executive conference, strategic planning, rationalization of the public higher education system, NBC 461 conference, SUC leveling instrument and guidelines, trends in fiscal administration, PASUC assembly, handling of *Mamamayan Muna* cases, administrative officers' idealism, revised policies on qualification standard, trainer's training on 5S, archives and records, updates on intravenous and chemotherapy, PDA-Dolfenal scientific and management conference (Table 9).

## ACQUISITIONS

The following equipment/materials were obtained by the administrative offices through purchase and fabrication: 1 unit each of Fax machine, computer equipped with modem and CD writer, air conditioner, CD rewriter and DVD reader, sound blaster, quantum cable, network cable, hard disk, DVD/VCD/CD player, computer chair, wireless microphone, Venetian blinds, and dictionary; 2 units each of laser printer, hot and cold water dispenser, exhaust fan, ceiling fan, and industrial fan; 3 units each of UPS, printer, computer monitor, box fan, and junior executive chair; 7 units of computer table and visitors' chair; 8 units computer; 11 units steel filing cabinet; 12 pieces Philippine flag and 6 pieces LSU banner; and fabricated 1 unit each of counter cabinet and shelf divider as well as 2 units each of office table and modular table.



The concreted access roads of PCC (top) and covered walk at the DASS and DOH (bottom).



LSU security guards doing their group work during their reorientation workshop.



**TABLE 9. TRAININGS, SEMINARS, WORKSHOPS, CONVENTIONS ATTENDED BY ADMINISTRATIVE STAFF**

Office/Unit	International		National		Regional		Local	
	Tmng.	Participants	Tmng.	Participants	Tmng.	Participants	Tmng.	Participants
Office of the President								
IO	-	-	-	-	1	1	1	2
PO	-	-	-	-	-	-	2	3
ICU	-	-	-	-	-	-	1	2
CAC	-	-	-	-	1	1	1	1
SUB-TOTAL	-	-	-	-	2	2	5	8
Office of the Vice President for Academic Affairs								
OCIMD	1	1	3	3	2	2	1	1
ODAE	-	-	1	1	1	1	3	3
Graduate School	-	-	1	1	-	-	2	4
Registrar's Office	1	1	2	2	1	1	4	8
Library	-	-	4	4	4	4	-	-
Alangalang Campus	1	1	3	5	12	15	2	2
Tolosa Campus	-	-	1	1	1	2	2	2
SUB-TOTAL	3	3	15	17	21	25	14	20
Office of the Vice President for Administration & Finance								
OVPAF	-	-	5	5	2	2	8	8
ODA	-	-	1	1	2	2	5	8
HRMDO	-	-	-	-	5	5	3	9
PPO	-	-	-	-	1	2	2	4
Property Office	-	-	-	-	1	1	2	7
Infirmery	-	-	2	2	2	2	2	2
Records Office	-	-	-	-	1	1	2	5
SUB-TOTAL	-	-	8	8	14	15	24	43
GRAND TOTAL	3	3	23	25	37	42	43	71



# Significant Events

**Dr. Jose L. Bacusmo**, Vice President for Research and Extension and an alumnus of the Leyte State University, served as guest speaker during the 24<sup>th</sup> Honors and Awards Convocation on February 12, 2003. In his speech, he stressed that “poverty is not a hindrance to success” and one can achieve his/her aspirations in life if he/she will “dream dreams and strive to achieve them.”

**Dr. Rene Josef Bullecer**, medical doctor and director of AIDS-Free Philippines-Cebu, was guest lecturer during the forum entitled “When Loving is at Risk: Reflections on Love, Sex, and AIDS” on February 13, 2003, jointly sponsored by the Gender and Development Program (GAD) and the Institute for Strategic Research and Development Studies (ISRDS).

The **Culture and Arts Center and the University Folkloric Dance Troupe**, in cooperation with the Institute of Human Kinetics (IHK), staged the “Glimpse of the Philippine Culture” on February 21, 2003. The dance presentation featured different primitive tribal dances of the Igorots of North Central Luzon, Muslim tapestry consisting of Arabic-Malayan Muslim dances of Mindanao and Sulu, and the Spanish-European dances of the lowland Christian Filipinos.

A team of ABS-CBN television staff led by Ms. Aleth Agulto and Ms. Aida Gonzales, director and anchor of the regular TV program *Trip Ko 'To*, respectively, visited LSU on March 5, 2003 in line with their plan to feature LSU and other interesting parts of Leyte in the said program.

**Atty. Fred B. Pamaos**, a 1992 LSULHS graduate with honors and Bachelor of Arts in Political Science (cum laude) and Bachelor of Laws graduate of UP Diliman, served as commencement speaker during the 73<sup>rd</sup> Commencement Rites of the LSULHS on March 21, 2003.

**Mr. Claus-Peter Hutter**, President of the Internationale Stiftung Europaisches Naturerbe, otherwise known as the European Nature Heritage Fund (EURONATURE); Director, Baden Wurttemberg State Academy for the Protection of Nature and the Environment; and Chairman, Scientific Committee of the Center for Agriculture in the Tropics and Sub-Tropics at Hohenheim University, Germany, was the commencement speaker during LSU's 50<sup>th</sup> Collegiate Commencement Exercises on March 31, 2003. In his speech, he underscored the importance of sustainable use of the world's natural resources and stressed that this concern can be very well addressed through a “more comprehensive and responsible globalization thrust.”

**DENR Secretary Elisea G. Gozun**, as keynote speaker during the International Symposium on Sustainable Management of Tropical Ecosystems held at LSU Convention Center, LSU, Baybay, Leyte on April 11-12, 2003, expressed her fears on the possible effects of the alarming decline of the country's forest cover estimated at about a hundred thousand hectares annually.



Dr. Jose L. Bacusmo, LSU's Vice President for Research and Extension, inspires students as guest speaker during the 24<sup>th</sup> Honors & Awards Convocation.



Atty. Fred B. Pamaos, commencement speaker during the 73<sup>rd</sup> Commencement Rites of the LSULHS.



Mr. Claus-Peter Hutter, commencement speaker during the 50<sup>th</sup> Collegiate Commencement Exercises.



Hon. Elisea G. Gozun, DENR Secretary, keynote speaker during the International Symposium on Sustainable Management of Tropical Ecosystem.





Dr. Ester A. Garcia, former chairman of CHED and LSU's BOR, guest of honor during the launching of the Eco-Tourism Project of LSU.



Dr. Fusao Tomita, 1st president of the Asian Federation of Societies for Lactic Acid Bacteria (AFSLAB), guest speaker during the First Lactic Acid Bacteria Seminar.



Gov. Rosette Y. Lerias of Southern Leyte, guest speaker during the Farmers' Field Day.

**Dr. Ester A. Garcia**, former chairman of the Commission on Higher Education (CHED) and of LSU's Board of Regents (BOR), was the guest of honor during the launching of the Eco-Tourism Project of LSU on May 1, 2003. She lauded the LSU Administration for initiating the Eco-Tourism Project to showcase the biological diversity of the remaining rainforests for nature-lovers to appreciate.

**Ms. Adelina O. Carreno**, Broadcast Production Supervisor of LSU Radio DYAC, participated in the three-week training course on "News Online" at the Radio Deutsche Welle Training Centre (DWRTC) in Cologne, Germany on May 3-23, 2003.

**Dr. Fusao Tomita** of Japan, President of the newly established Asian Federation of Societies for Lactic Acid Bacteria (AFSLAB), was the guest speaker during the First Lactic Acid Bacteria Seminar held at LSU on May 12, 2003.

**Dr. Ramon V. Valmayor**, President of the Philippine Agriculture and Resources Research Foundation, Incorporated (PARRFI), visited LSU on July 10, 2003 to meet with the University's PARRFI undergraduate scholars and professorial chair grantees.

**Dr. Eliseo R. Ponce**, LSU professor on secondment as Visiting Research Fellow at the Philippine Institute for Development Studies (PIDS), visited LSU and gave a lecture on "Governance and Project Management" at the ISRDS on July 22, 2003.

**Gov. Rosette Y. Lerias** of Southern Leyte, was the guest speaker during the Farmers' Field Day on August 9, 2003. She emphasized the importance of farming for everyone's existence and for the country's development, and encouraged the farmers to persevere in their work. She also urged agricultural experts to continue providing the farmers technical assistance and services.

**Mrs. Luzviminda P. Cabañas** of Barangay San Jose, Palo, Leyte was proclaimed as the 2003 Outstanding Farmer-Entrepreneur during the Farmers' Field Day on August 9, 2003 and was presented the *Ugmad Award*. The award recognizes her qualities as a farmer: "innovative, combining environment-friendly farming technologies to sustain above-average production outputs with high return of investment." Other awardees were **Mrs. Oliva Dapiton** - *Most Outstanding Farmer of Baybay* and **Mr. Narciso Fernandez** - *Most Outstanding Livestock Farmer*.

**Congresswoman Imee Marcos** was represented by Dr. Eduard Chua, Chief Executive of the Asian Development Foundation College in Tacloban City, as guest speaker during the 79<sup>th</sup> Anniversary Convocation Program on August 11, 2003. In her speech read by Dr. Chua, the lady House Representative congratulated LSU for having "carved a niche in the national as well as international arena with regard to agriculture." She also vowed strong support to LSU.



LSU granted awards to the following agencies and individuals during its 79<sup>th</sup> Founding Anniversary Convocation Program on August 11, 2003:

- The **Philippine Agriculture and Resources Research Foundation, Inc. (PARRFI)** - *Sandigan Award* (the University's most prestigious award), "for granting scholarships to students of LSU since 1989 until the present which financially helped deserving students to complete their college education and for its support to LSU's faculty development programs through professorial fellowship grants since 2001."
- The **Student Scholarship Fund Raising Committee (SSFRC)** of LSU - *Special Award*, "for its untiring and dedicated efforts to generate funds through various inventive ways to support and send to college poor but deserving students of LSU for the past 25 years."
- **Mr. Ramon R. Barbosa** - *Entrepreneurship Award*, "for his successful agricultural and business ventures."
- The following LSU faculty and staff were given recognition for their remarkable work performance:
  - **Dr. Wolfreda T. Alesna** - *Exemplary Academician Award*
  - **Prof. Algerico M. Mariscal** - *Exemplary Researcher Award*
  - **Dr. Ruben M. Gapasin** - *Exemplary Extensionist Award*
  - **Prof. Reny G. Gerona** - *Exemplary Teacher Award*
  - **Ms. Wenifreda T. Oclinaría** - *Best Administrative Support Staff (Administrative Assistant)*
  - **Mr. Genaro G. Godoy** - *Best Administrative Support Staff (Audio-Visual Technician)*
  - **Ms. Faye Aileen S. Mascariñas** - *Model Clerk*
  - **Mr. Marcos M. Posas** - *Model Utility Worker*
  - **Mr. Rodrigo D. Braga** - *Model Skilled Worker (Laboratory Aide)*
  - **Mr. Jaime V. Latras** - *Model Non-skilled Worker (Laborer)*
- **Prof. Sergio S. Abit, Sr., Dr. Linda S. de la Rosa, Dr. Vicente A. Quiton, and Prof. Dominador S. Ugsang** - *Mt. Pangasugan Award*, "for their faithful and dedicated service to the University."
- **Prof. Benjamin C. Agarcio, Jr., Prof. Librada A. Dean, Mr. Alejo R. Masendo, Prof. Aurora P. Mercado, Prof. Paz C. Pala, Mr. Marcelino G. Poliquit, Prof. Erlinda P. Rosillo, and Prof. Ildefonso C. Taganas** - *Service Award*
- **Prof. and Mrs. Pedro P. Pascual** - *LSU Family of the Year Award*



Mrs. Oliva Dapiton, outstanding Farmer of Baybay, and her husband pose with Mayor Jose Carlos L. Cari and LSU Pres. Paciencia P. Milan after receiving the award.



Dr. Guindolino R. Gerona (middle), Chairman of the Student Scholarship Fund Raising Committee (SSFRC) pose with LSU Pres. Paciencia P. Milan & Dr. Eduard Chua after receiving LSU's Special Award for SSFRC.





Miss LSU 2003, Jeela Z. Acedo and her court.



Dr. Heinz Bongartz, guest speaker during the 22nd Foundation Anniversary of the Institute of Strategic Research and Development Studies (ISRDS).



LSU President Dr. Paciencia P. Milan, explains LSU's thrusts and programs to Secretary Romulo L. Neri, Socio-Economic Planning Secretary and Director-General of NEDA.

**Jeela Z. Acedo**, a high school student, was proclaimed Miss LSU 2003 with **Glair Ann L. Lim**, 1<sup>st</sup> runner up; **Arianne F. Alvez**, 2<sup>nd</sup> runner up; **Anne Zee Luz P. Barroso**, 3<sup>rd</sup> runner up; and **Bevilyn Karen V. Pascual**, 4<sup>th</sup> runner up.

The following won the different booth contest categories during the 79<sup>th</sup> Founding Anniversary:

- LSU Student Organizations - **Student Body Organization of LSU Laboratory High School** - *Booth of the Year, Most Artistic, Most Symbolic, and Most Environment-Friendly.*
- LSU R & E Centers - **NCRC-Visayas** - *Most Symbolic*; **National Abaca Research Center** - *Most Environment-Friendly*; **Philippine Root Crop Research and Training Center** - *Booth of the Year and Most Artistic.*
- LSU Colleges and Satellite Campuses - **College of Agriculture** - *Booth of the Year and Most Symbolic*; **College of Arts and Sciences** - *Booth of the Year and Most Environment-Friendly*; **College of Engineering and Agri-Industries** - *Most Artistic.*
- Other Agencies - **Municipal Agriculturist Office of Baybay** - *Booth of the Year, Most Symbolic and Most Artistic*; **Department of Environment and Natural Resources** - *Most Environment-Friendly.*

**Hon. Celestino E. Martinez, Jr.**, Undersecretary for Special Concerns of the Department of Agriculture and Head of the Visayas Cluster, was the keynote speaker during the 15<sup>th</sup> Regional Research and Development Symposium held on August 19, 2003 at the LSU Convention Center.

**Prof. Rosa Maria Feliciano**, Chairman of the Department of Broadcast Communication, College of Mass Communication at UP Diliman, and **Ms. Claudia Blume**, Deutsche Welle World Representative to the Philippines, served as speakers during the 21<sup>st</sup> anniversary of the LSU Radio Station DYAC on August 27, 2003.

**Dr. Heinz Bongartz**, Resident Representative of the Friedrich Ebert Stiftung (FES), a German Foundation for Social Development, was the guest speaker during the 22<sup>nd</sup> Foundation Anniversary of the Institute for Strategic Research and Development Studies (ISRDS), formerly the Center for Social Research (CSR), on September 5, 2003.

**Secretary Romulo L. Neri**, Socio-Economic Planning Secretary and Director-General of the National Economic and Development Authority (NEDA), visited the LSU Main Campus on September 13, 2003 as part of his itinerary to assess the economic condition of Region VIII.

**Atty. Teresita Rojas**, GSIS-Region VIII manager and two other officers: Mr. Manuelito Basciano and Ms. Dita Herbito, both Social General Insurance Specialist, updated LSU staff and faculty on the new GSIS programs and policies on September 18, 2003.

**Hon. Magdangal de Leon**, Assistant Solicitor General and **Atty Gloriosa C. Guinocor**, LSU Legal Consultant, were the speakers during the Forum on Filipino Identity and Values on September 30, 2003. Hon. De Leon stressed



the need for Filipinos to change their negative self-image with inspiring images of their race and reawaken Filipino values in order to achieve national unity and sense of pride.

**The Philippine Carabao Center (PCC) at LSU** joined the whole world in celebrating the 2003 World Food Day through "Milk for Health Consciousness Day" on October 16, 2003. A total of 40 children, aged 2-9 years from barangays Gabas, Guadalupe, and Patag of Baybay, Leyte benefited from PCC's feeding program.

**Hon. Renato A. de Rueda**, DENR Undersecretary for Field Operations, was the keynote speaker during the 1<sup>st</sup> National Agroforestry Congress on November 19-20, 2003 at LSU.

The **LSU Meatshop**, managed by the Department of Animal Science and located at the LSU Market, was opened on November 28, 2003 to provide wholesome meat and meat products, dairy products, and farm-fresh eggs to the LSU community and neighboring barangays and serve as a laboratory facility for the students. This project was initiated by Dr. Guindolino R. Gerona.

The **Marine Laboratory of the Institute of Tropical Ecology** assumed as the new graduate consortium administrative base of the Federation of Institutions for Marine and Freshwater Sciences (FIMFS) and was hence tasked, among others, to coordinate the offering of MSc and PhD in Marine Biology.

LSU hosted the following conferences, workshops, fora during the year:

- **2<sup>nd</sup> Scientific Forum of the Philippine Phytopathological Society Inc. - Visayas** on March 13, 2003 with the theme "Towards Sustainable Plant Diseases Management."
- **1<sup>st</sup> Visayas Congress of the Forum on the Legislation of Water Security (FLOWS)** on March 17-22, 2003 with the theme "Sustainable Groundwater Use: Key to Community Water Security" which was jointly sponsored by the LSU's Institute of Strategic Research and Development Studies (ISRDS) and Tambuyog Development Center in Quezon City.
- **10<sup>th</sup> International Symposium on Sustainable Management of Tropical Ecosystems** on April 11-12, 2003 which was organized by LSU's Institute of Tropical Ecology (ITE) together with the University of Hohenheim (UH) and Martin Luther University (MLU) in Germany.
- **1<sup>st</sup> Seminar on Lactic Acid Bacteria**, the first of its kind of seminar in the country, was held on May 12, 2003 with the theme "Beneficial Role of Lactic Acid Bacteria (LAB) in Food, Feeds and Industry."
- **1<sup>st</sup> Farmer-to-Farmer Forum** was held at LSU on October 21-23, 2003 as a venue for exchange of ideas and sharing of experiences among farmers from Australia and the Philippines. The forum was organized by the Leyte Livestock Improvement Project in cooperation with the Australian Centre for International Agriculture Research (ACIAR), Novartis, and ATI-NTC Visayas, and was participated in by 93 farmers, agricultural technicians, researchers, and academicians.



Prof. Lolito Bestil, Director of the Philippine Carabao Center at LSU, help distribute bottles of milk to children from the neighboring barangays.



Opening of the LSU Meatshop.



Dr. Jose L. Bacusmo, Vice President for Research and Extension, during the farmer-to-farmer forum.





Dr. Amelou Benitez-Reyes, President of WSAP, speaks during the 4th WSAP National Conference.

- **4<sup>th</sup> National Conference of the Women's Studies Association of the Philippines (WSAP)** on October 22-24, 2003 with the theme "Reconceiving Power: Women, Education, Governance and the State." The affair sought to strengthen the regional implementation of gender mainstreaming and gender-fair curriculum development in the regional level.
- **1<sup>st</sup> National Agroforestry Congress** on November 19-20, 2003 with the theme "Convergence for Agroforestry Development in the Philippines" and sponsored by the Philippine Agroforestry Education and Research Network (PAFERN) in collaboration with the Institute of Agroforestry of the University of the Philippines at Los Baños (UPLB) and LSU.
- **National Seminar-Workshop on Teacher Education** on December 3-5, 2003 with the theme "Enhancing Supervisory Skills and Competence of Cooperating Teachers and Supervising Instructors: Toward Effective Mentoring of Pre-service Teachers."
- **2<sup>nd</sup> National Symposium-Workshop on Aquatic Biology R & D** on December 10-11, 2003 with the theme "Advances in Freshwater Biology and Ecosystems: Conservation, Utilization, and Technology Application" and sponsored by the National Research Council of the Philippines, The World Fish Center, Philippine Council for Aquatic and Marine Research and Development, Federation of Institutions in Marine and Freshwater Sciences, and LSU.



# Awards Received by Faculty and Staff

Name of Award	Recipient	Agency	Date
<u>INTERNATIONAL LEVEL</u>			
Certificate of Merit	Dr. Edwin A. Balbarino	TVN, USA	Sept. 10, 2003
2001 International Publication Award	For: Renizita F. Sales	Phil. Agric'l. Scientist	March 5, 2003
<u>NATIONAL LEVEL</u>			
Professorial Chair	Dr. Lutgarda S. Palomar Dr. Misael T. Diputado, Jr.	PARRFI	Jan 1-Dec. 31, 2003
Certificate of Recognition (Science Research Adviser)	Prof. Tessie C. Nuñez	Intel Phil. Science Fair	Feb. 20, 2003
Best Ph. D. Thesis Finalist Award	Dr. Calendario L. Calibo	Gamma Sigma Delta Honor Society in Agric	March 20, 2003
Best Paper Award (Irrigation, Soil & Water Resources Category)	Prof. Alan L. Presbitero	PSAE	April 25, 2003
Best Paper Award (Post-harvest Handling, Processing and Management Category)	Dr. Daniel Leslie S. Tan	PSAE	April 25, 2003
Plaque of Recognition	Dr. Beatriz S. Belonias	DOST-PCARRD	July 18, 2003
M. S. Swaminathan Outstanding Research Award	Dr. Lucia M. Borines	PCARRD	July 18, 2003
DA Secretary's Award for Research (Published Category)	Dr. Lina T. Villacarlos Ms. Belen S. Mejia Dr. Siegfried Keller	DA-BAR	Oct. 9, 2003
DA Secretary's Award for Research (Published Category)	Dr. Marcelo A. Quevedo Dr. Ofelia K. Bautista	DA-BAR	Oct. 9, 2003
National Development Paper Award in Agriculture and Natural Resources	Dr. Edwin A. Balbarino	PCARRD	Nov. 10, 2003
National <i>Likha</i> Award - Outstanding Creative Research Award (3 <sup>rd</sup> place)	Dr. Edgardo E. Tulin	DOST	Nov. 30, 2003
National Invention <i>Tuklas</i> Award -Outstanding Utility Model (2 <sup>nd</sup> place)	Prof. Feliciano G. Sinon Engr. A. C. Martinez, Jr.	DOST-TAPI	Nov. 30, 2003
<i>Sibol</i> Award (1 <sup>st</sup> prize) as adviser	Dr. Jose M. Oclarit	DOST-TAPI	Nov. 2003



The national awardees (from top to bottom): Dr. Daniel Leslie S. Tan (left, topmost photo), Dr. Beatriz S. Belonias (3<sup>rd</sup> from left, 2<sup>nd</sup> photo), Dr. Lucia M. Borines (3<sup>rd</sup> photo), and Dr. Edwin A. Balbarino (4<sup>th</sup> from left, bottom photo).





The LSU faculty-VICARP awardees during the 2003 Regional R&D Symposium.



Dr. Erlinda A. Vasquez, winner of the VICARP Best Poster Award (1st prize), with her poster.

Name of Award	Recipient	Agency	Date
<b>REGIONAL LEVEL</b>			
Regional Meat Processing (1 <sup>st</sup> prize)	Ms. Anna Lea D. Lim	DA-RFU	May 5, 2003
Meat Product Development (2 <sup>nd</sup> place)	Dr. Roberta D. Lauzon	DA-Region 8	Aug. 5, 2003
Outstanding Basic Research (1 <sup>st</sup> prize)	Dr. Manuel K. Palomar Dr. Erlinda O. Landerito Ms. Avelina P. Molato Ms. Doreen S. Canayong	VICARP	Aug. 19, 2003
Outstanding Basic Research (2 <sup>nd</sup> prize)	Dr. Daniel Leslie S. Tan Mr. Kim Alvin B. Codilla	VICARP	Aug. 19, 2003
Outstanding Basic Research (3 <sup>rd</sup> prize)	Dr. Erlinda A. Vasquez Dr. Manuel K. Palomar Mr. Edgardo B. Barsalote	VICARP	Aug. 19, 2003
Outstanding Applied Research (1 <sup>st</sup> prize)	Dr. Julie D. Tan Ms. Edna E. Forio	VICARP	Aug. 19, 2003
Outstanding Applied Research (2 <sup>nd</sup> prize)	Dr. Alan B. Loreto Engr. Manolo B. Loreto	VICARP	Aug. 19, 2003
Outstanding Applied Research (3 <sup>rd</sup> prize)	Dr. Daniel Leslie S. Tan Prof. Ramon R. Orias Engr. Roldan V. Piedraverde	VICARP	Aug. 19, 2003
Outstanding Development Research (1 <sup>st</sup> prize)	Dr. Edwin A. Balbarino	VICARP	Aug. 19, 2003
Outstanding Development Research (2 <sup>nd</sup> prize)	Dr. Edwin A. Balbarino Dr. Raquel C. Serohijos Dr. Ma. Salome B. Bulayog Dr. Sulpecio C. Bantugan Prof. Norma B. Mesorado Ms. Suzette A. Binongo Ms. Marilyn C. Sebial	VICARP	Aug. 19, 2003
Best Poster Award (1 <sup>st</sup> prize)	Dr. Erlinda A. Vasquez	VICARP	Aug. 19, 2003
Best Poster Award (2 <sup>nd</sup> prize)	Prof. Luz O. Moreno Dr. Lelita R. Gonzal Dr. Lucia M. Borines Prof. Elsie E. Salamat	VICARP	Aug. 19, 2003
Best Poster Award (3 <sup>rd</sup> prize)	Prof. Fernando A. Evangelio Dr. Marcelo A. Quevedo	VICARP-PCARRD	Aug. 19, 2003
Outstanding Research Paper (Adviser)	Dr. Edgardo E. Tulin	POSTE, Region 8	Nov. 22, 2003
Literary Quiz Among Advisers (2 <sup>nd</sup> place); Extemporaneous Speaking Among Advisers (3 <sup>rd</sup> place)	Mr. John Michael V. Faller	Regional Secondary Conference Schools Press	Nov. 26-28, 2003
Outstanding LSP-MDC Alumna 2003	Mrs. Marichu M. Padayao (LSU-Alang-alang Campus)	CSC RO 8 & CSC-LSP MDC	Sept. 23, 2003
Certificate of Merit and Recognition	Mr. Policarpo N. Duavis (LSU-Tolosa Campus)	CHED RO-8	Nov. 29, 2003



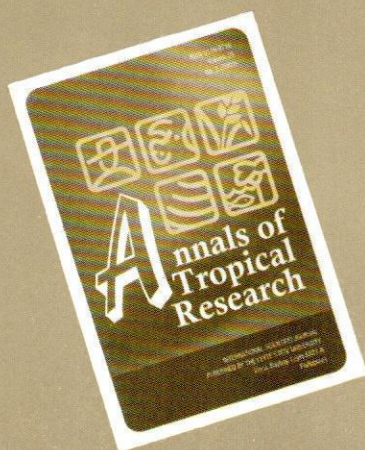
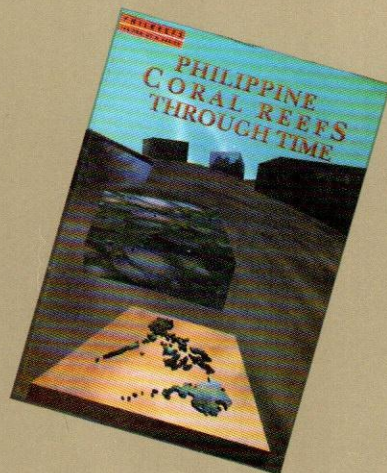
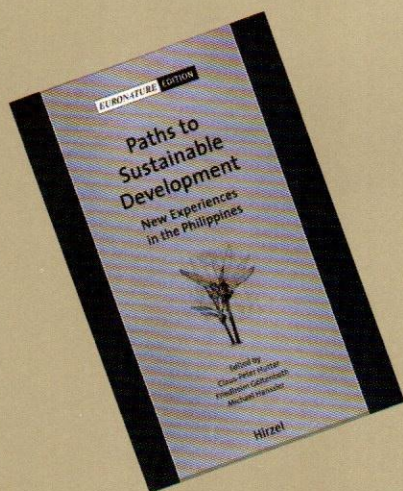
Name of Award	Recipient	Agency	Date
<u>INSTITUTIONAL/MUNICIPAL LEVEL</u>			
Exemplary Academician Award	Dr. Wolfreda T. Alesna	LSU	Aug. 11, 2003
Exemplary Researcher Award	Prof. Algerico M. Mariscal	LSU	Aug. 11, 2003
Exemplary Extensionist Award	Dr. Ruben M. Gapasin	LSU	Aug. 11, 2003
Exemplary Teacher Award	Prof. Remy G. Gerona	LSU	Aug. 11, 2003
Best Administrative Support Staff (Administrative Assistant)	Ms. Wenifreda T. Ocinarina	LSU	Aug. 11, 2003
Best Administrative Support Staff (Audio-Visual Technician)	Mr. Genaro G. Godoy	LSU	Aug. 11, 2003
Model Clerk	Ms. Faye Aileen S. Mascariñas	LSU	Aug. 11, 2003
Model Utility Worker	Mr. Marcos M. Posas	LSU	Aug. 11, 2003
Model Skilled Worker (Laboratory Aide)	Mr. Rodrigo D. Braga	LSU	Aug. 11, 2003
Model Non-skilled Worker (Laborer)	Mr. Jaime V. Latras	LSU	Aug. 11, 2003
Best Paper Award (2 <sup>nd</sup> prize) (Adviser)	Dr. Lualhati M. Noriel Prof. Remy G. Gerona	LSULHS	Jan. 2003
Plaque of Appreciation	Dr. Lelita R. Gonzal Engr. Feliciano G. Sinon Mr. Rommel B. Armecin	DA	Dec. 3, 2003
Loyalty Award	Mr. Emmanuel J. Casimban Mr. Manuel S. Rona Ms. Claribel C. Ponferrada Mr. Benedicto V. Nuñez Mr. Manuel C. Marmita	LSU-Alangalang Campus	Sept. 5, 2003
Outstanding Employee 2003	Ms. Lilibeth G. Miralles	Alangalang LSU	Nov. 8, 2003



Awardees during the 79<sup>th</sup> LSU Founding Anniversary (clockwise) Dr. Wolfreda T. Alesna, Prof. Algerico M. Mariscal, Dr. Ruben M. Gapasin, Prof. Remy G. Gerona, Ms. Wenifreda T. Ocinarina, Mr. Genaro G. Godoy, Ms. Faye Aileen S. Mascariñas, Mr. Marcos M. Posas, Mr. Rodrigo D. Braga.



# Publications Authored by Faculty Members & Researchers



Author	Title	Where Published
Gonzal, L. R., Guarte, R. C., and Muehlbauer, W., 2003	Using Abaca Fibers as Industrial Material. In: Hutter, Goeltenboth and Hansler (Editors). Paths to Sustainable Development: New Experiences in the Philippines	S. Hirzel Printing Press, Berkenwaldstrasse 14, 70191, Germany
Gonzal, L. R., and A. F. Valida, 2003	<i>Musa textiles</i> Nee. In: Brink, M. and Escobin, R.P. (Editors): Plant Resources of South-East Asia No. 17. Fibre plants	Backhuys Publishers, Leiden, the Netherlands pp. 186-193
Villacarlos, L. T., Mejia, B. S. and Keller, S., 2003	<i>Entomophthora leyteensis</i> Villacarlos and Keller sp. nov. (Entomophthorales: Zygomycetes) infecting <i>Tetraleurodes acaciae</i> (Quaintance) (Insecta, Hemiptera: Aleyrodidae) a recently introduced whitefly on <i>Glinidia sepium</i> (Jac.) Walp. (Fabaceae) in the Philippines	Academic Press, Journal of Invertebrate Pathology 2003
Cesar, S. A., Gerona, R. G., Germano, B. P., Caliente, A. C., Seronay, R., Schoppe, S., Clark, S. and Milan, P. P., 2003	Coral Reef Information Network of the Philippines (Philreef) Chapter 20 Leyte, Eastern Visayas	Philippine Coral Reefs through Time: Workshop Proceeding 2003, MSI, U. P., Diliman
Galvez, F. C. F., Lustre, A. O., Cariso, A. R., Agustin, G., Edra, E. V., Palomar, L. S., and Resurrecion, A. V. A., 2002	Technical and Policy Issues Related to Strengthening the Market for Peanuts.	Monograph Series No. 1. United States Agency for International Development and Peanut Collaborative Research Support Program. pp. 1-144.
Williams, L. A., Vasquez, E. A., Klaiber, I., Kraus, W., and Rosner, H., 2003	A Sulfonic Anhydride Derivative from Trisulphide with Agro-Chemical Activities.	Chemosphere 51:701-706
Tan, D. L. S. 2003	Technical Performance of Processing of Rootcrop Processing Machines	Annals of Tropical Research Vol. 25
Evangelio, F. A., and Quevedo, M. A., 2003	Effect of Bulbils as Planting Materials on the Tuber Yield of Yam	Phil. Jour. Crop Sci. Vol. 28.
Amante, V. d. R., Vasquez, E. A., O'Sullivan and Norton, G. A., 2003	A Field Guide to Sweetpotato Problems in the Philippines	Univ. of Queensland, Brisbane, Australia, 88 pp.
Harrison, S., Herbohn, J., Mangaoang, E. O., and Vanclay, J. (editors)	Socio-Economic Research Methods in Forestry: A Training Manual	Coop. Res. Centre for Tropical Rainforest Ecology & Mgt. Rainforest CRC, Cairns, North Queensland, Australia
Lasco, R. D. and Sales, R. F. August 2003	Estimating Carbon Storage and Sequestration of Philippine Forest Ecosystems	Smallholder Research Paper Series (1 <sup>st</sup> issue)
Mangaoang, E. O., 2003	Socio-Economic Research in Smallholder Forestry	Annals of Tropical Research Vol. 25, No. 1
Peque, D. P., 2003	Value-adding in Forestry at the Farm & Community Level	Annals of Tropical Research Vol. 25, No. 2



# Officers of the LSU System

## **Heads of LSU Campuses**

(As of December 31, 2003)

### MAIN CAMPUS

#### **DR. PACIENCIA P. MILAN**

*President, Leyte State University  
Visca, Baybay, Leyte*

### SATELLITE CAMPUSES

#### **PROF. SERGIO G. TEMPORADA**

*OIC-Dean, College of Agri-Industrial Technology  
LSU-Isabel Campus  
Isabel, Leyte*

#### **DR. CONCHITA A. ITO**

*Dean, College of Education and Agricultural Technology  
LSU-Villaba Campus  
Villaba, Leyte*

#### **DR. PABLO B. PEDRERA**

*Dean, College of Environmental & Agricultural Technology  
LSU-Alangalang Campus  
Alangalang, Leyte*

#### **DR. CELEDONIA DE ASIS PALAÑA**

*Dean, College of Fisheries  
LSU-Tolosa Campus  
Tolosa, Leyte*



# Administrative Council

(AS OF DECEMBER 31, 2003)

Dr. Paciencia P. Milan	-	<i>President &amp; Chairman</i>
Dr. Manuel K. Palomar	-	<i>Vice President for Academic Affairs</i>
Dr. Jose M. Alkuino, Jr.	-	<i>Vice President for Administration &amp; Finance</i>
Dr. Jose L. Bacusmo	-	<i>Vice President for Research &amp; Extension</i>
Prof. Jesusito L. Lim	-	<i>Executive Officer</i>
Mr. Daniel M. Tudtud, Jr.	-	<i>University/Board Secretary</i>
Ms. Norma V. Cala	-	<i>Director, Finance</i>
Dr. Lourdes B. Cano	-	<i>Director, Administration</i>
Dr. Nerelito P. Pascual	-	<i>Assistant to the President for Corporate Planning &amp; Income Generation</i>
Ms. Erlinda S. Esguerra	-	<i>OIC, Accounting Division</i>
Ms. Teresita L. Quiñanola	-	<i>OIC, Human Resource Management &amp; Development Office</i>
Dr. Isabel P. Bertulfo	-	<i>Head, Infirmary</i>
Engr. Nestor M. Israel	-	<i>Superintendent, Physical Plant Office</i>
Dr. Misael T. Diputado, Jr.	-	<i>Director, Accreditation &amp; Evaluation</i>
Dr. Edgardo E. Tulin	-	<i>Director, CIMDO</i>
Dr. Oscar B. Posas	-	<i>Dean, College of Agriculture</i>
Dr. Lina T. Villacarlos	-	<i>Dean, Graduate School</i>
Prof. Aurora S. Alkuino	-	<i>Dean of Students</i>
Dr. Erlinda O. Landerito	-	<i>Dean, College of Arts and Sciences</i>
Dr. Dolores L. Alcober	-	<i>Dean, College of Education</i>
Dr. Gregorio J. Galinato, Jr.	-	<i>Dean, College of Engineering and Agri-Industries</i>
Dr. Eduardo O. Mangaoang	-	<i>Dean, College of Forestry</i>
Prof. Remedios R. Russel	-	<i>Director, Institute of Human Kinetics</i>
Dr. Tomas J. Fernandez, Jr.	-	<i>Dean, College of Veterinary Medicine</i>
Prof. Sergio G. Temporada	-	<i>OIC-Dean, College of Agri-Industrial Technology</i>
Dr. Conchita A. Ito	-	<i>Dean, College of Education &amp; Agricultural Technology</i>
Dr. Pablo B. Pedrera	-	<i>Dean, College of Environmental &amp; Agricultural Technology</i>
Dr. Celedonia de Asis Palaña	-	<i>Dean, College of Fisheries</i>
Engr. Manolo B. Loreto	-	<i>Head, National Service Training Program</i>
Dr. Wolfreda T. Alesna	-	<i>Director for R&amp;E Technology Dissemination</i>
Dr. Angela A. Ferraren	-	<i>Director for Research &amp; Extension Programs</i>
Prof. Algerico M. Mariscal	-	<i>OIC, Philippine Root Crop Research &amp; Training Center</i>
Dr. Lelita R. Gonzal	-	<i>Director, National Abaca Research Center</i>
Dr. Roberto C. Guarte	-	<i>Director, National Coconut Research Center-Visayas</i>
Dr. Zosimo M. De la Rosa	-	<i>Director, Farm &amp; Resource Management Institute</i>
Ms. Rebecca B. Napiere	-	<i>University Librarian</i>
Ms. Linda N. Mariscal	-	<i>University Registrar</i>



# Board of Regents

## CHAIRMAN

### **BRO. ROLANDO R. DIZON**

*Chairperson, Commission on Higher Education*  
DAP Bldg., San Miguel Avenue, Ortigas Center, Pasig City

## VICE-CHAIRMAN

### **DR. PACIENCIA P. MILAN**

*President, Leyte State University*  
Visca, Baybay, Leyte

## MEMBERS

### **SEN. FRANCIS PANGILINAN**

*Chairman, Senate Committee on Education, Arts and Culture, Senate of the Philippines*  
Financial Center, GSIS Bldg., Pasay City

### **CONG. HARLIN CAST. ABAYON**

*Chairman, House Committee on Higher and Technical Education, Congress of the Philippines*  
Constitution Hills, Quezon City

### **DIR. BUENAVENTURAC. GO-SOCO, JR.**

*Regional Executive Director,*  
National Economic Development Authority,  
Region VIII, Palo, Leyte

### **DIR. LEOP. CAÑEDA**

*Regional Executive Director,*  
Department of Agriculture Region VIII,  
Tacloban City

### **DR. BUENAVENTURAB. DARGANTES**

*President, ViSCA Faculty Association*  
Leyte State University, Visca, Baybay, Leyte

### **DR. GUINDOLINOR R. GERONA**

*President, ViSCA Alumni Association*  
Leyte State University, Visca, Baybay, Leyte

### **MR. FEILMER P. GOMEZ**

*President, College Supreme Student Council,*  
Leyte State University, Visca, Baybay, Leyte

## PRIVATE SECTOR REPRESENTATIVES

### **MRS. REBECCA V. BARBUSA**

Hilongos, Leyte

### **DR. JOSE V. MAZO**

Tanauan, Leyte

## BOARD SECRETARY

### **MR. DANIEL M. TUDTUD, JR.**

*University Secretary, Leyte State University*  
Visca, Baybay, Leyte



### **LSU 2003 Annual Report Production Staff**

Consultant	:	PACIENCIA P. MILAN
Production Supervisor	:	NERELITO P. PASCUAL
Editor	:	ZENAIDA D. GERONA
Text Consolidation	:	BERNARDITA P. BIBERA
Design & Layout	:	ANNETTE D. ISRAEL
Photo Credit	:	Information Office, ISRDS, DGRP, NCRC-V, DYAC, COF, FARM, DFS, VICARP, PhilRootcrops, LSU Review Center, OSA, IHK, ODA, Dr. Daniel Leslie S. Tan, Dr. Julie D. Tan, Dr. Lucia M. Borines, Dr. Edwin A. Balbarino, Dr. Beatriz S. Belonias, Engr. Jeffrey L. Cagande, Freddy M. Baldos, Annette D. Israel, Jeela Acedo,
Facilitator	:	RONILLO V. CANO



## *Goals*

1. Produce high and middle-level quality manpower in agriculture and allied fields to serve the development needs of the region.
2. Generate agricultural production and processing technologies and technology dissemination strategies adaptable to small farms.
3. Advocate effective policy formulation and management of rural development programs.
4. Improve the productivity, profitability, equity, and well-being of the Visayan farmers and their household members through ecologically sound natural resources management.
5. Promote effectiveness, efficiency, and productivity in the operation of the university system.

## *Objectives*

1. To strive for excellence in agriculture education for regional and rural development.
2. To sharpen its focus on impact programs and projects in instruction, research, and the application of new knowledge for the well-being of the small Visayan farmers and rural families.
3. To build enduring linkages with national and regional institutions and agencies for the promotion of relevant instruction, meaningful research, and effective transmission of useful knowledge in the rural communities in the Visayas.



## Leyte State University

6521 Visca, Baybay, Leyte, Philippines

tel. no. : (0062) 53 335-2600

fax no. : (0062) 53 335-2601

e-mail : [opvisca@mozcom.com](mailto:opvisca@mozcom.com)

website : [www.lsu-visca.edu.ph](http://www.lsu-visca.edu.ph)

### MANILA OFFICE

8 Lourdes Street, Pasay City

tel. no. : (0062) 2 521-2027; 525-6849

### CEBU OFFICE

Molave Street, Lahug

tel. no. : (0062) 32 232-8077; 232-8078

