



**VSU EXTENSION PROJECT  
ANNUAL ACCOMPLISHMENT REPORT**

**CY 2023**

**I. Basic Information**

1. Program/Project Title: **Coalescing Organizations for Locally-Led Actions to Boost Development (COLLABDev) for Inopacan Development**  
Program/Project Leader: Lilian B. Nuñez
2. Project Component (s):
  - Component 1: Development Data Laboratory (Leader: Mr. Ian Dave B. Custodio)
  - Component 2: Capacity Building in Geodata Collection, Analysis, and Mapping (Leader: Dr. Jannet C. Bencure)
  - Component 3: Capacity Building for Agriculture and Fisheries Development (Leader: Dr. Suzette B. Lina)
  - Component 4: Capacity Building for Tourism Development (Leader: Ms. Mauren Joy F. Manadong)
  - Component 5: Gender Mainstreaming and Alliance Building for Community Development (Leader: Dr. Lilian B. Nuñez)
  - Component 6: Enhancement of the VSU Community's Knowledge Base in Data-Driven Development (Leader: Ms. Merry Jean A. Caparas)Staff Involved: NA
3. Implementing Unit: Institute for Strategic Research and Development Studies
4. Cooperating Agencies: Inopacan Local Government Unit  
Contact Numbers: 09955120568: Hon. Rogelio Pua, Municipal Mayor  
09564888477: Engr. Francis Pua,  
Municipal Administrator  
09202309280: Ms. Michelle De Los Santos, OIC, Planning Officer
5. Program/Project Sites: Inopacan, Leyte
6. Duration: 2023-2025
  - a. Date Started: January 2023
  - b. Expected date of completion: December 2025
7. Financial report for the year under review
  - a. Total approved budget: PhP 100,000
  - b. Actual released budget: PhP 100,000
  - c. External support or counterpart funds from cooperating agencies: NONE
  - d. Actual expenditures: PhP 100,000

## II. Technical Report (not more than 25 pages including the tables and charts)

### A. Executive Summary

The COLLABDev for Inopacan Development extension project endeavors to perform the role of VSU as the local resource organization (LRO) for Inopacan under the COLLABDev main project of USAID and AER as stipulated in the MOA between VSU and AER signed in October 2021. Based on the said MOA, AER provides technical support to VSU which is operationalized through the soft components of technical assistance and capacity building, facilitation and linkage, linking project partners to resources and networks, and alliance building. As LRO, VSU provides specific technical assistance to local coalitions and existing local special bodies in the Inopacan municipality apart from serving as a repository of data for planning and policy making. Before the COLLABDev USAID-funded project of AER ended in June 2023, VSU and Inopacan LGU entered into an agreement that would take care of pursuing the development initiatives in the municipality. The extension project is composed of several components that are framed upon the agro-aqua tourism development priority of the LGU.

### B. Rationale

**Rationale.** COLLABDev is a three-year extension project covered by a Memorandum of Agreement between VSU and the Inopacan LGU. It focuses on VSU providing technical support to the Inopacan municipality in agro-aqua tourism development. VSU's COLLABDev project team was prepared to undertake its role as a Local Resource Organization of the Inopacan municipality through a series of training sessions conducted by the Action for Economic Reforms (AER) during the period June 2021 to June 2023. The team's capacity was strengthened in the following programs: 1) Development Data Lab or DDL; 2) Policy Development Lab or PDL; 3) Data and Tech Alliance for Development ("DATA4Dev"), and 4) Policy and Research Institute for Development ("PRIDE"). The COLLABDev extension project continues to address the deliverables stipulated in the MOA. Equally important is the opportunity for VSU to help the Inopacan LGU realize its vision of authentic community development.

**Objectives.** Generally, the project aims to perform VSU's roles as a Local Resource Organization (LRO) of the municipality of Inopacan, Leyte. Specifically, the project aims to:

1. Provide technical assistance in database establishment and management for planning and policy-making;
2. Provide technical assistance in geodata collection, analysis, and mapping;
3. Build the capacity of the Inopacan municipality in agro-aqua tourism development;
4. Mainstream gender in all project activities and community development initiatives; and
5. Disseminate to the VSU community the knowledge and skills gained from the COLLABDev Project

### C. Logical Framework

Project Description	Objectively Verifiable Indicators	Means of Verification	Assumptions
<b>Goal</b>  Human-centered data-driven development in Inopacan and VSU	Increased participation of stakeholders and incorporation of data in sectoral plans and annual investment plans	Administrative reports by LGU  Monitoring and evaluation reports of programs	Adoption of LGU and the participation of communities following the DDD framework

<b>Purpose</b>  Improved database and project management practices through capacity development for data driven development in Inopacan and VSU	Memorandum of Agreement deliverables between VSU as local resource organization and the municipality of Inopacan are delivered / implemented/ conducted	Project reports  Monitoring and Evaluation reports	Sustained interest by partners to implement deliverables  Project activities will coincide with LGU's plans for successful implementation  Staff are not overloaded so they are still able to perform their extension and research functions
<b>Outputs</b>  1. Functional database for planning and policy making	Sets of data analyzed, visualized and interpreted	Established database and dashboards; Data analysis reports	Availability and access of required data
2. Gender mainstreaming and capacity building activities for data driven development planning in tourism, agriculture and fisheries	2 Training Needs Assessment  2 trainings  Membership in 2 Municipal Councils  Meetings for the review of municipal plans  Reviewed municipal plans  Inventory on agro-tourism resources	TNA reports  Training reports  Invitation from LCE/appointments  Municipal Plans  Attendance sheets Maps produced	Sustained cooperation of the community members and LGUs concerned as guided by identified needs;  Availability of accessible venue for the conduct of project activities  Cost sharing with LGU
3. Linkages established	MOA forged Inventory of partners Viscan Youth mappers group organized  Project Development Workshop conducted	MOA  Project proposal  VYM registration documents  Workshop report	Sustained cooperation of the community members and LGUs concerned
4. Resource materials disseminated	1 webpage dedicated for the COLLABDev project Number of posts, blog articles, documentation published on social media (ISRDS Facebook page) and webpage	Webpage Social media posts Post insights	Activities are conducted and implemented as planned.
<b>Activities</b>  Review and assess existing data and data management practices  Develop data visualization dashboards and produce quick analytics of the existing	<b>Inputs</b>  Available and accessible data within VSU  Budget Linkages Technical expertise	Quarterly progress reports,  Annual In-house review reports	Available and accessible data from Inopacan LGU  Sustained cooperation of the LGU

<p>datasets through the use of open-source applications.</p> <p>Conduct data analysis, visualization, and interpretation upon the request of the LGU and other stakeholders.</p>	<p>Supplies and materials</p> <p>Physical requirements</p>		
<p>Assist LGU in the formulation or review of the Municipal Agricultural and Fisheries Development Plan.</p> <p>Conduct training needs assessment for the Municipal Agriculture Office.</p> <p>Conduct 1 training.</p> <p>Gain membership in the Municipal Agriculture and Fisheries Council.</p>	<p>Budget</p> <p>Linkages</p> <p>Technical expertise</p> <p>Supplies and materials</p> <p>Physical requirements</p>	<p>Quarterly progress reports</p> <p>Annual In-house review reports</p>	<p>Sustained cooperation of the community members and the LGU</p> <p>Restrictions are relaxed allowing capacity development activities.</p>
<p>Conduct an inventory of agro-tourism resources.</p> <p>Conduct participatory validation of inventory.</p> <p>Provide technical assistance in the formulation of the Municipal Tourism Development Plan.</p> <p>Gain membership in the Municipal Tourism Council and attend meetings.</p>	<p>Budget</p> <p>Linkages</p> <p>Technical expertise</p> <p>Supplies and materials</p> <p>Physical requirements</p>	<p>Quarterly progress reports</p> <p>Annual In-house review reports</p>	<p>Sustained cooperation of the community members and the LGU</p> <p>Restrictions are relaxed allowing capacity development activities.</p>
<p>Form a youth mappers group.</p> <p>Conduct training in mapping. Collect geodata for mapping.</p> <p>Produce maps needed by the LGU for planning.</p>	<p>Budget</p> <p>Linkages</p> <p>Technical expertise</p> <p>Supplies and materials</p> <p>Physical requirements</p>	<p>Quarterly progress reports</p> <p>Annual In-house review reports</p>	<p>Sustained cooperation of the community members and the LGU</p> <p>Restrictions are relaxed allowing capacity development activities.</p>
<p>Conduct an inventory of partners of the LGU.</p> <p>Conduct project development workshop for identified project</p> <p>Identify potential partners of the LGU</p>	<p>Budget</p> <p>Linkages</p> <p>Technical expertise</p> <p>Supplies and materials</p> <p>Physical requirements</p>	<p>Quarterly progress reports</p> <p>Annual In-house review reports</p>	<p>Sustained cooperation of the community members and the LGU.</p> <p>Restrictions are relaxed allowing capacity development activities.</p>

<p>Conduct gender training needs assessment for the LGU, POs, and other organizations</p> <p>Conduct 1 gender training.</p> <p>Review development plans for gender sensitivity/responsiveness</p>	<p>Budget</p> <p>Linkages</p> <p>Technical expertise</p> <p>Supplies and materials</p> <p>Physical requirements</p>	<p>Quarterly progress reports</p> <p>Annual In-house review reports</p>	<p>Sustained cooperation of the community members and the LGU</p> <p>Restrictions are relaxed allowing capacity development activities.</p>
<p>Invite staff and students to the COLLABDev webinars on data-driven development and other topics</p> <p>Share IEC materials to the VSU community</p> <p>Advocate for the implementation of data-driven planning.</p>	<p>Budget</p> <p>Linkages</p> <p>Technical expertise</p> <p>Supplies and materials</p> <p>Physical requirements</p>	<p>Quarterly progress reports</p> <p>Annual In-house review reports</p>	<p>Sustained cooperation of the community members and the LGU</p> <p>Restrictions are relaxed allowing capacity development activities.</p>

## D. Methodologies Employed

### Component 1: Development of Data Laboratory

- Establish and improve the data collection, management, and storage practices of the Inopacan LGU for better analysis, planning, policymaking, and data-driven development.
- Manage the Data Lab (VISERDAC) as the repository of the LGU's various current and future datasets.
- Create data dashboard for Inopacan using available data

### Component 2: Capacity Building in Geodata Collection, Analysis, and Mapping

- Organize and train youth mappers to undertake mapping-related activities in the municipality.
- Generate various maps that will aid the LGU and its special bodies in planning and policy-making.

### Component 3: Capacity Building for Agriculture and Fisheries Development

- Capacitate local actors in planning and policy formulation in the areas of agriculture and fisheries.
- Conduct inventories, draft policies, and provide technical assistance in the formulation or review of the LGU's codes in agriculture and fisheries.
- Arrange for membership in the LGU's special bodies.

### Component 4: Capacity Building for Tourism Development

- Capacitate local actors in formulating their Agro-Tourism Development Plan.
- Conduct an inventory of agro-tourism resources of the municipality before planning.
- Arrange for membership in the Municipal Tourism Council for VSU to participate in decision-making, implementation, and monitoring and evaluation of the tourism development program(s) of the municipality.

### Component 5: Gender Mainstreaming and Alliance Building for Community Development

- Seek for the integration of GAD principles and the municipality's Gender Code stipulations in all project activities.
- Capacitate local actors in making gender-responsive plans and policies.
- Link Inopacan LGU to different organizations for fund sourcing and/or capacity building.
- Strengthen organizations working within the municipality to become partners of the LGU in community

development.

#### **Component 6: Enhancement of the VSU Community's Knowledge Base in Data-Driven Development**

- Set up a knowledge repository (webpage or social media page) for resource materials and make all materials publicly available to university staff and students to enhance the existing knowledge base of the university, staff, and students.
- Serve as a platform to disseminate project outputs and activities such as fora and symposia organized and conducted by COLLABDev where university staff and students will be invited. Through the platform, we hope to encourage and invite staff and students alike to conduct more research and extension work in Inopacan.

### **E. Results/Accomplishments**

#### **1. Conducted seminars and training for Inopacan LGU and constituents**

<b>Title</b>	<b>Date and Venue</b>	<b>Number of Participants</b>	<b>Number of Persons Trained Weighed by Length of Training</b>
PRIDE 3: Data-Driven Development: Data Governance	January 18, 2023 ISRDS, VSU	27	27
PRIDE 4: Training Program on Data-Driven Development	January 27-28, 2023 Department of Geodetic Engineering, VSU	29	36.25
Business Planning Workshop	February 8-10, 2023 ISRDS, VSU	14	21
PRIDE 5: Policy Evaluation	March 1, 2023 ISRDS, VSU	8	8
PRIDE 6: Data-Driven Development for Resource-Constrained LGUs	March 8, 2023 ISRDS, VSU	15	15

2. Recommended the creation of the municipal tourism council with VSU as a member
3. Conducted an organizational meeting of the Inopacan Tourism Council (ITOURCO) in Inopacan, Leyte
4. Designed the tourism development planning workshop and arranged for a three-day training-workshop for the ITOURCO members
5. Developed a training manual on geodata collection and mapping for adoption in the training of Inopacan constituents in 2024
6. Arranged for access to Barangay Management Information System (BMIS) data for use in the updating of the community dashboard
7. Provided mentoring and coaching services to VSU-Isabel's BIDANI project team on the proper implementation of the project in the Isabel municipality
8. Attended COLLABDev National Assembly held on August 23, 2023



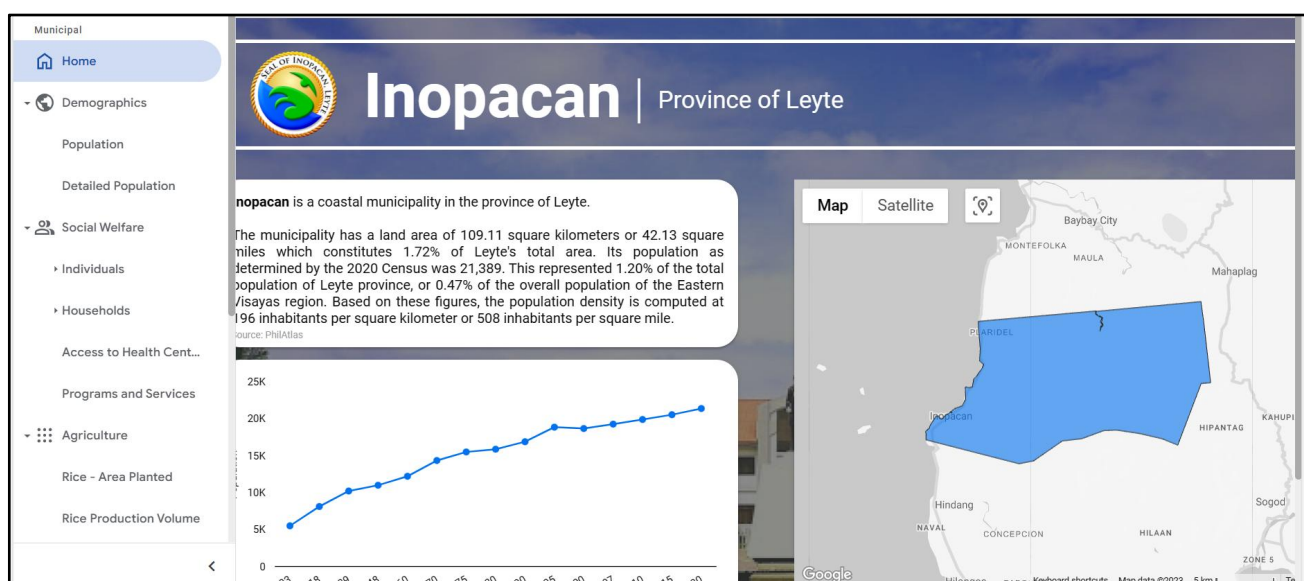
## F. Problems Met and Recommendations

Problems Met	Actions Taken or Recommendations
When a new LCE was elected in May 2022, a different set of personnel was identified for the COLLABDev project. In 2023 the project had to orient the new set of staff and conduct the capacity-building activities all over again.	The project conducted a set of seminars and training for the LGU staff newly involved in the COLLABDev project.
There was no identified qualified data focal for Inopacan as the data expert was a job-order employee.	The team recommended to the LCE to assign a regular item for the data person.
The LGU's focal persons for COLLABDev (Municipal Planning and Development Office) focused on another extension project (BIDANI) which required all the barangays to gather data, clean and analyze these data, and use these for sectoral planning and barangay integrated development planning. This resulted in the LGU's postponement of two major activities of the COLLABDev project.	The GIS Mapping training and Tourism Development Planning Workshop were postponed to 2024.  The COLLABDev project team arranged for the use of the BIDANI-BMIS data to improve the community data dashboard. However, the data needs final cleaning before these can be inputted in the dashboard.
Project staff, who are all faculty members, have a heavy workload. Project team meetings which were targeted monthly became scarcer.	The project team members worked across all components of the project.  The group chat platform was made an active venue for discussion of activities and concerns.

## G. Plans and Target for the next year (if continuing program/projects)

- Together with data focals of the LGU, enhance or improve the Inopacan data dashboard using BIDANI-BMIS data
- Conduct training needs assessment for agro-aqua tourism development
- Conduct the following training and seminars:
  - Geodata collection and mapping
  - Tourism development planning
  - Gender mainstreaming in the LGU
  - Other trainings based on the TNA results (e.g. leadership, product development, enterprise development)
- Produce maps for use in planning and policymaking
- Codevelop the Municipal Tourism Code

## I. Photodocumentation



Inopacan data dashboard (homepage)



PRIDE 3: Workshop on Data Governance-- Participants from Inopacan LGU were introduced to data infrastructure, data security, data privacy, and freedom of information. A total of 27 participants attended the workshop.





PRIDE 4: Workshop on Data Analysis - Participants from Inopacan LGU were trained on data preparation, qualitative and quantitative analysis, and data visualization. A total of 29 participants attended the workshop.



PRIDE 5 & PRIDE 6 workshops were conducted on March 1 and 8, 2023. Participants gained insights about cost- benefit analysis and the importance of digitized data within their respective sectors.





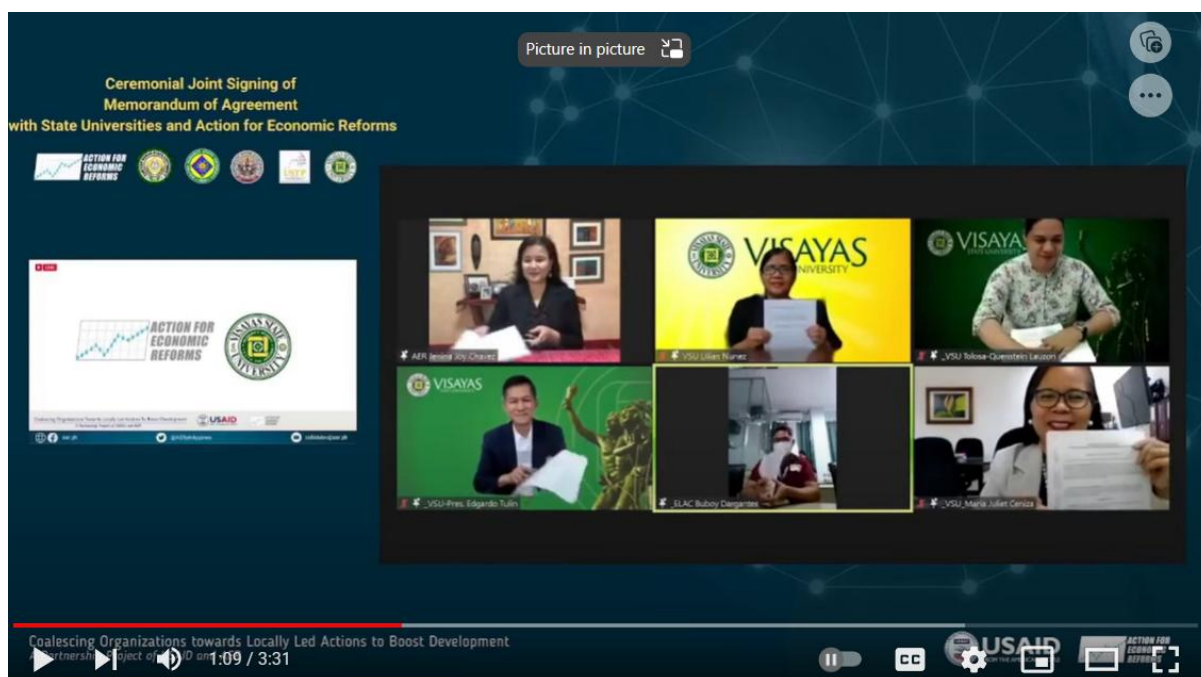
The organizational meeting of the Inopacan Tourism Council (ITOURCO)



Meeting with the Inopacan local chief executive



COLLABDev national assembly attended by one project team member, Dr. Jannet C. Bencure

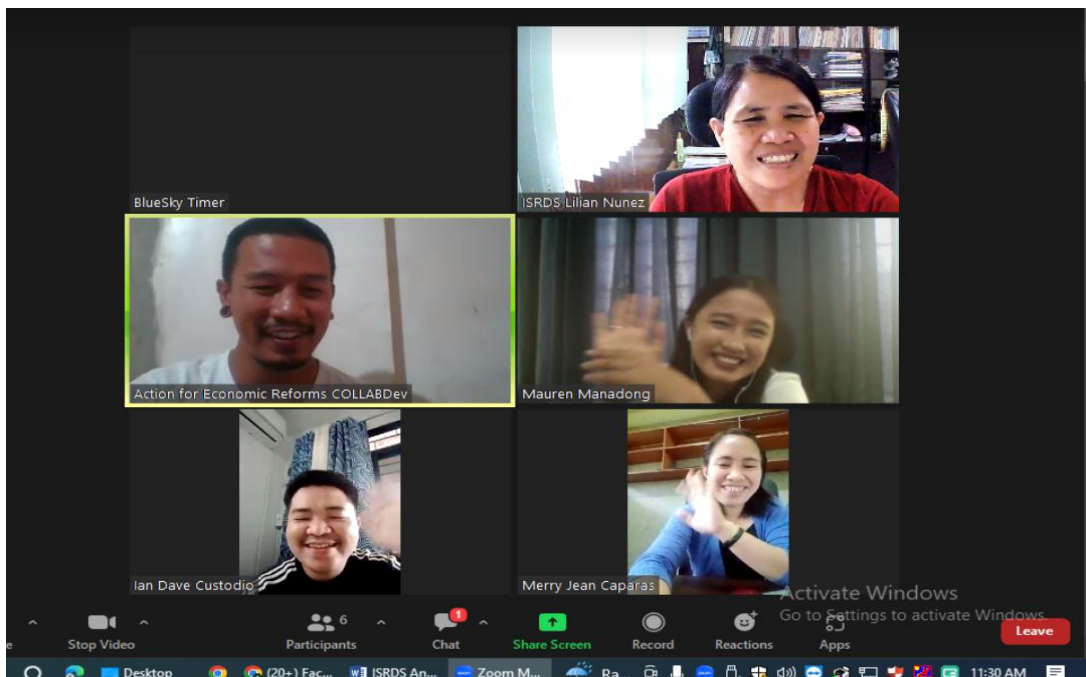


Virtual ceremonial joint signing of the MOA between VSU and AER





Signing of the MOA between VSU and Inopacan, April 2023



One virtual meeting of project staff